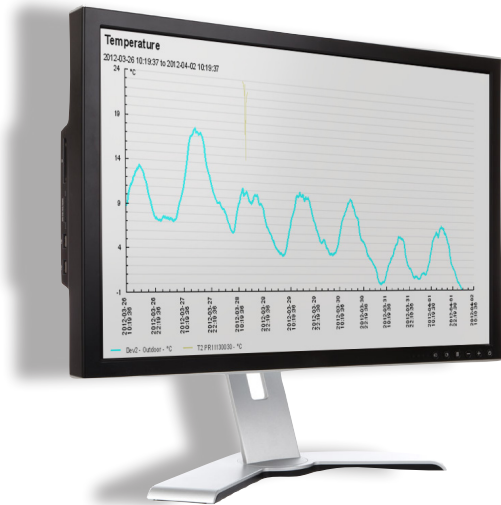




Quick user guide

The web interface for ComfortLog



Main functions

WebSensys is a web application used for monitoring and managing WiSensys wireless sensor networks. The chapters below describe the most important web pages.

Graphs

By default, you start in the Graphs page after logging in. Here you see the most recent values of your sensors in small graph thumbnails. Click on a thumbnail to view a bigger version of the graph. To modify the time range of the axis, you can choose a different history length.

Sensors

The Sensors tab gives the most recent and most extreme values of all of your sensors in the selected history length. It also can show the status if the sensor is in alarm or out of range.

You can choose to show or hide the sensor in the realtime graphs, summary tabs of mobile pages by toggling the appropriate checkboxes under the Visibility columns.

Pressing the link under the Graph column (for example: Temperature), a graph containing only that data channel will be shown.

By pressing the Change link under the Appearance column, you can change the appearance of the sensor in all graphs.

For some sensors, also the signal strength is available.

History

On the History page, you can export historical data to graphs or different file formats. You can choose the start and end period for the export and also, for graphs and CSV files with tabular data, the interval. An interval can be chosen to smooth out the graphs, by taking the average of all values during the interval, and is required for the tabular data CSV files.

In the table below the export options, you can choose all individual data channels of all available sensors, to be included

in the export. All data channels are grouped per data type in their own selection lists.

Alarms

Alarms tab, you get an overview of all available alarms for all sensors in your system. By selecting a sensor or data channel (e.g. T, RH) in the tree on the left side of the screen, you can filter the alarms shown on the screen.

You can create an alarm by selecting the data channel for which you want to create an alarm and clicking Create new alarm... which will open the alarm edit dialog. The same dialog is opened when you click on the Edit alarm... link in the alarms table.

The alarms list is color coded, when the alarm is shown green, it means it is not triggered. Red means that the alarm is currently triggered. Orange means that the alarm is triggered but the alarm delay has not passed yet. Gray means disabled.

Configuring new or existing alarms

After opening the alarm edit dialog, you can configure an alarm. The following options can be changed:

- Description: a descriptive name for the alarm. This is also the text that is sent by e-mail or SMS.
- Active: enables or disables the alarm.
- Active from – to and Active on: Determines in which hours and on which days the alarm should be active.
- Trigger value: the trigger value of the alarm and the condition the measured value should meet to trigger the alarm.
- Alarm delay: the amount of the alarm must be triggered before performing an action.
- Consecutive delay and Consecutive delay maximum: the consecutive delay is the amount of time for the following actions after the first action has been performed and the alarm is still triggered.

You can also add an action (such as e-mail message or SMS) to be performed when the alarm is triggered. By pressing the Delete button next to an existing action, the action can be removed.

Logbook

This logbook function can be used for auditing purposes and illustrates that actions have been taken. A Search function has been added to list all entries for a particular sensor or base station

Floorplans

Floorplans can be used to illustrate on a floorplan the measured quantities. Go to Floorplans; create new floorplan in the Administrator tab. For that you need to have a floorplan image (eg in jpg format) available on your computer. Sensor values can be dragged to the proper position

Rules

Rules in the Rules tab are similar to alarms in configuration, but differ in the actions that can be taken. Rules can operate switches on energy sensors in the system. With rules, electrical equipment can be switched on/off based on conditions like temperature.

Configuration

In the Configuration tab, you can configure the sensors in your system.

www.comfortlog.com

Username:

Password:

intab^o

To edit the parameters of a sensor to edit the sensor parameters for that sensor:

Reports

It is possible to create and automatically generate daily, weekly or monthly reports. The reports can then be send to your e-mail box. You can configure reports in the Reports screen under the Administrator tab.

To create a new report you can press the Create new report... link on the bottom of the page. Press Edit report... to edit an existing report. After clicking one of the links, the report editing dialog will popup where you can change the report settings.

The reports are generated in PDF file format and you must have a PDF viewer installed to view them.

Configuring reports

In the report editing dialog, you can set the following options for the reports:

- Report type: daily, weekly and monthly reports can be generated automatically each day, each Monday or each 1st of the month respectively. Custom reports can only be viewed manually.
- Report title: a descriptive title of the report.
- Report start and end time: only used when custom report is chosen as the report type.

Press the Save button to save the report configuration.

Viewing reports

You can view reports without waiting for the reports to be e-mailed to you.

Just click the View report... link on the Reports page. A dialog will appear with a calendar where you can click on a date to generate a report for that date.

Custom graphs and equations

You can create your own custom graphs and map sensors to them. This way you can group sensors together in different graphs for readability. Go to Custom graphs and equations on the Administrator page to create a new graph.

To create a new graph, click Create new graph... to open the graph edit dialog. Configure the graph and press Save to save the graph. You must at least enter a title.

To make use of a custom graph, you first must assign sensors (data channels) to the graph. To do that, you must create an equation. Click Create new equation... to open the equation edit dialog. Only linear equations can be used. This is done by mapping 2 data points

You can also use equations to translate data. As an example, you can translate the temperature in °C to temperature in °F.

Personal settings

You can customize the website to your own needs. Go to Personal settings in the Administrator page to do that. You can change your start-up page, the history length in real-time graphs, the history length in sensors, the visible summary page elements, the visible pages and much more.

Mobile

A mobile page is also available for accessing the application using a mobile phone.

When you go to the Personal mobile page in the Administrator, you can scan the link for accessing directly with your mobile using a barcode reader or e-mail the link to your e-mail address. You then can save the mobile link as a bookmark in your mobile browser.

You do not need to login on the page, but you may need to re-set your bookmark if you or your administrator changes your authentication code.