



User manual

MSR 255

Table of contents

User manual	1
Important notes regarding this user manual	5
Safety instructions and warnings	6
Operating Instructions	7
Overview	8
Controls	8
Turning the unit on / saving measurement parameters	9
Logger display / Logger operation	10
Logger states	10
Logger display and logger operation	11
Indicator LED's	12
Maintenance	13
User checks	13
Cleaning	13
Charging the battery	13
Specifications	14
Defining the axes	14
Operating, transport and storage conditions	15
Troubleshooting	15
Packing list	16
Disposal	16
Declaration of conformity	16
PC software	17
Setup	25
Basic settings	26
Prediction	27
Reducing the volume of data	28
Conditional recording of measurement parameters (limits)	28
Setting the alarm limit	28
LED behaviour	29
Transferring basic settings to several loggers	29
User settings	30
Adjusting the channel properties	31
Change basic parameter	33
Calibrating the sensors	34
Change display parameter	35
Defining the logger display	36
Formatting the memory	37
Reader	38
Viewer	39
Online	45
Utility programs	47
CSV	48

Instructions

Setup

Reader

Viewer

Online

Cutter.....	49
Calc.....	50
Concat.....	53
Additional software for PCs.....	55
FreeMat.....	56
Address.....	57

Instructions

Setup

Reader

Viewer

Online



Operating instructions

Instructions

PC software

Setup

Setup

Reader

Reader

Viewer

Viewer

Online



Online

Utility programs


Additional software for PCs

Important notes regarding this user manual

In this manual notes of particular importance are presented as follows:

 WARNING	Indicates that equipment may suffer damage or that there is a risk of injury to the operator or user should the instructions not be followed correctly.
 CAUTION	Indicates that equipment may suffer damage or that data loss may occur should the instructions not be followed correctly.

Conventions

Term / Symbol	Description	Example
Logger	In this manual the term "logger" is used to mean "MSR255".	
Commands, programs, menu items, functions, field names	Commands, programs, menu items, functions, field names are shown in bold .	Record
->	See page	-> 5
	<ul style="list-style-type: none">• Reference to further information• Further information	

Instructions

Setup

Reader

Viewer

Online

Safety instructions and warnings



WARNING

- Read the operating instructions carefully before using the logger or the logger software. This will protect you personally and avoid damage to the unit.
- The logger is a unit for recording and displaying measurement parameters and may not be used for safety-related applications.
- Before using the logger check the unit itself and all cables for visible signs of damage and never operate a damaged logger. A damaged logger can endanger operator safety! Should the logger not function perfectly or appear to be damaged, send it to MSR Electronics GmbH for repair.
- Ensure that no fluids enter the logger's casing. Fluids cause corrosion damage and short-circuits inside the logger.
- The logger must never be opened or modified. The manufacturer cannot be held liable for damage resulting from use other than that for which the unit is intended, or from improper operation of the unit.
- Never use a logger with a leaking battery. Should a battery leak be detected ensure that the electrolyte does not come into contact with the skin, the eyes or the mouth. Should this occur, thoroughly rinse the affected area with water for at least 15 minutes. Consult a doctor. Do not breathe in any vapours emitted. Immediately clean the electrolyte from the logger using a soft cloth and dispose of the cloth subsequently.



CAUTION

- Ensure the proper disposal of an obsolete logger, the USB connection cable and the mains adapter ->17.

Instructions

Setup

Reader

Viewer

Online

Operating Instructions

Instructions



MSR 255

Overview

The logger is a miniaturised universal datalogger for measuring and recording different physical measurement parameters. For further information, see data sheets.

The Logger PC program enables users to customise the way in which the logger measures and records data according to their requirements. The integrated clock (RTC) allows data from as many loggers as required to be synchronised and merged into a single data record.



MSR 255



USB connection cable

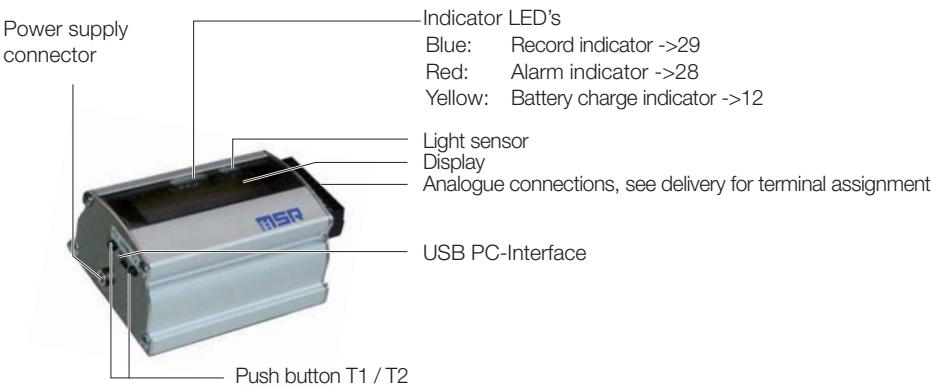


CD with PC software



Mains adapter

Controls



Turning the unit on / saving measurement parameters

The storage properties of the logger are determined using the **Setup** program*. Control of measurement parameter storage can be either time activated, value activated or by pushing the push button.

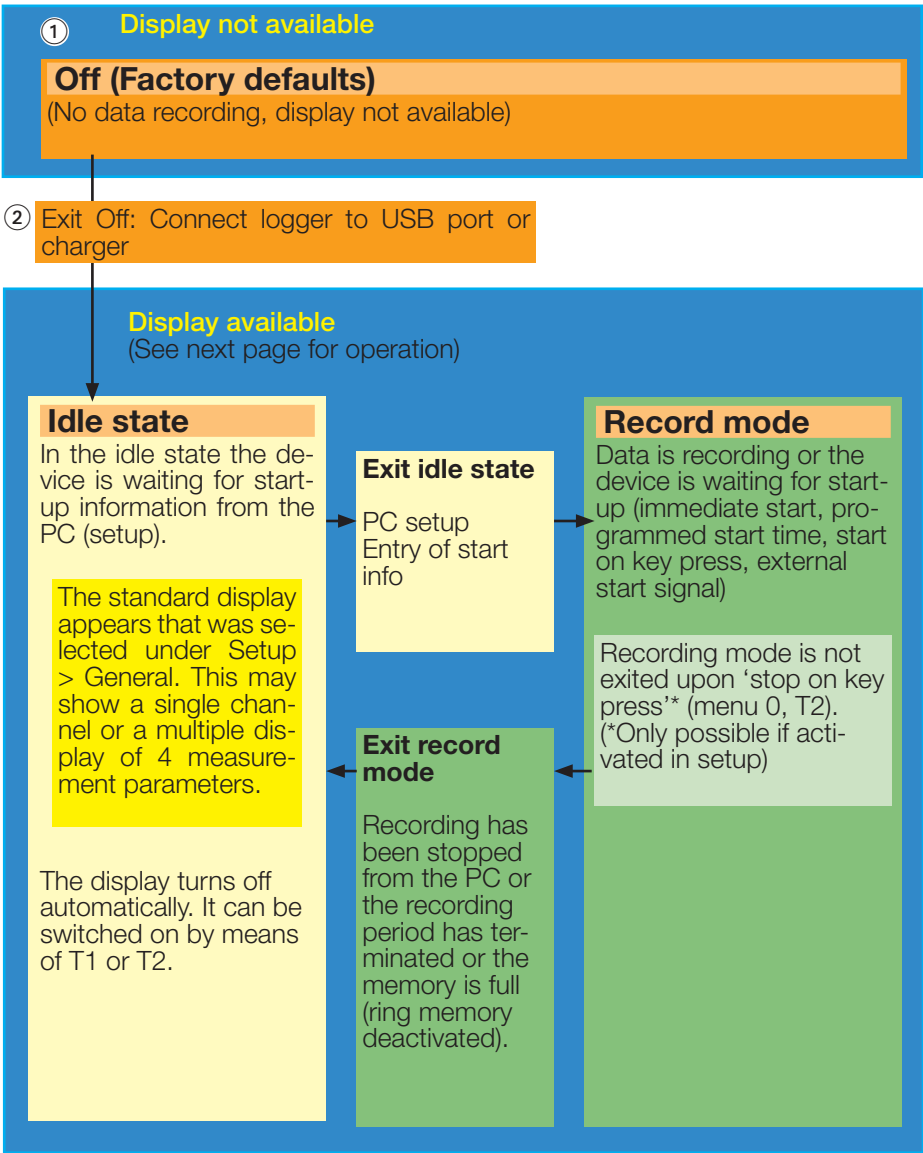
See also chapter „Logger display / Logger operation“ on page 10.

***Setup** is an PC program (see below).

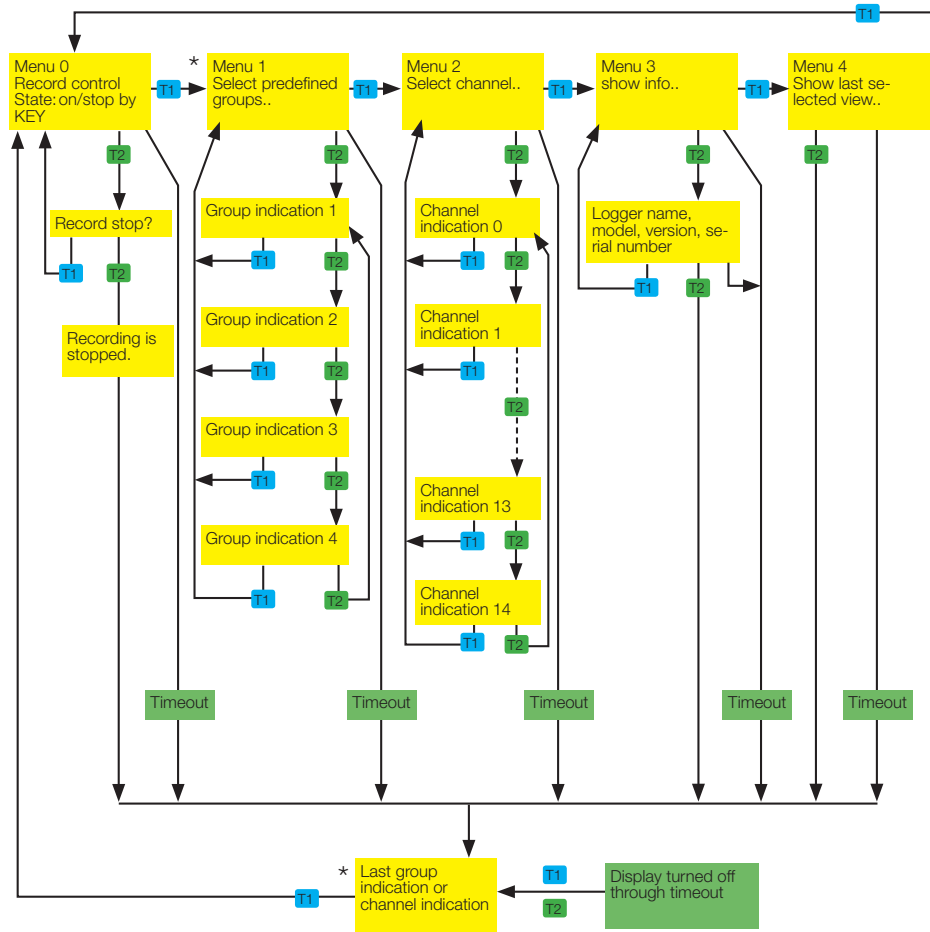
Logger display / Logger operation

When the logger is turned off ① the display cannot be activated using the T1 or T2 keys. The display and keys are activated by connecting the logger to a USB port or charger ②. The display is operated using keys T1 and T2 (see the diagram "Display and operation").

Logger states





Logger display and logger operation






Instructions

* For defining group indication and channel indication see „Defining the logger display“ on page 36.

Indicator LED's

Information displayed	
LED	Meaning
 Red	Alarm limit reached
 Blue	Define the behaviour of the blue LED via Setup > Basic settings . See the section Setup, LED behaviour.

Meaning of the yellow lamp during charging	
LED	Meaning
 yellow continuously	Charging in progress
 yellow off	<ul style="list-style-type: none"> • Fully charged • No connection to PC • PC turned off • Power supply not connected
 yellow flashes	<p>Fully charged</p> <p>The battery is recharged for a short time, e.g. during an online measurement or data recording</p>

Maintenance

User checks

- Check the logger before each use.
- Before using the logger check for visible signs of damage.
- Check the functions of the logger.
- Never use a logger that is damaged or not functioning perfectly. Never use damaged accessories.
- Ensure that the battery is sufficiently charged for the required period of use.

Should the logger not function perfectly or should damage become apparent send the unit to MSR Electronics GmbH for repair. Repairs may only be carried out by MSR Electronics GmbH or an authorised dealer. Defective or damaged components may only be replaced with manufacturer's original parts.

Cleaning



CAUTION

- Ensure that no fluids enter the logger's casing. Fluids will cause corrosion damage and short circuits.
- Never use corrosive or abrasive cleaning agents or polishes.
- Cleaning agents containing additives such as alcohol will cause the case to become matt and/or brittle.

- Clean the logger when necessary.
- Always disconnect the logger from the PC or the power supply before cleaning.
- Use a cleaning agent suitable for plastic or a cloth dampened with water and soap.

Charging the battery

Before first use:

The battery is not fully charged on delivery and should be charged before using the logger for the first time.

Charge the logger

- Before each use
- At least every six months

Procedure:

- Connect the logger to the power supply or via USB connection cable to the PC or an external USB mains adapter.

Notes:

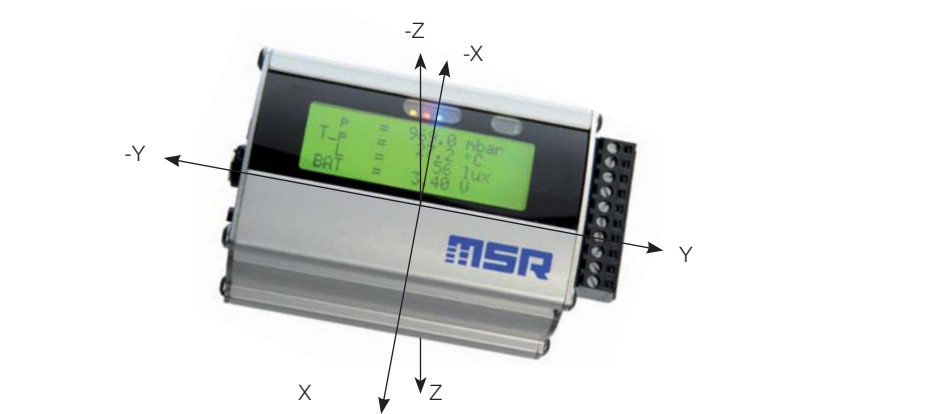
- The meaning of the yellow warning light during charging is described on page 12.
- Charging an exhausted battery takes approx. 5 hours using the mains adapter. Charging is also possible via the USB port with the backlight turned off (approx. 28 hours).
- Recorded data is non-volatile and remains in the unit's memory even when the battery is exhausted.
- Never store the logger with a discharged battery. See ->15 (storage conditions).

Specifications

See data sheets

Instructions

Defining the axes



Operating, transport and storage conditions

- Protect the logger from excessive exposure to the sun and other sources of heat. Avoid heavy impacts.
- Do not place heavy objects on top of the logger.
- Only store the logger in a dry, dust-free environment.

Operating conditions:

Temperature: -20°C to +65 °C

Pressure: 500 mbar to 2500 mbar absolute

Humidity: 10-95 % relative humidity, non-condensing
Avoid contact with water and humidity

Optimal storage and transportation conditions:

Temperature: 5°C bis 45°C (ideal storage condition for the battery)

Humidity: 10-95 % relative humidity, non-condensing
Avoid contact with water and humidity

Battery charge level: Never store the logger with a discharged battery.
The ideal charge level is a 2/3 charge
(see „Charging the battery“ on page 13)

Troubleshooting

Problem	Possible cause	Possible solution
The temperature increases continuously when the logger is connected to the mains adapter or the PC	The battery warms up because charging commences.	When making temperature measurements disconnect the logger from mains adapter or the PC.
The PC programs do not recognise the connected logger	The COM port driver is not installed correctly.	Observe the manufacturer's installation instructions. http://www.ftdichip.com/

Packing list

- MSR 255
- CD including:
 - User manual
 - Logger PC software
- Logger USB connection cable
- Mains adapter
- Terminal assignment

Disposal



Take the logger and the mains adapter to a municipal waste disposal centre or return it to MSR Electronics GmbH The logger and the mains adapter must not be disposed of in normal domestic waste.

Declaration of conformity



TEST REPORT

EN 61326-1

Electrical equipment for measurement, control and laboratory use

EN 61000-6-2 and EN 61000-6-3

Part 6-2: Immunity for industrial environments

Part 6-3: Emission standard for residential, commercial and light-industrial environments

Report reference No:

E971-05-6 b

Tested by test engineer:

L.Monnin

Approved by management:

Dr. F. Stucki

Date of issue:

5 September 2006

Number of pages:

14 pages

Testing laboratory:

QUINEL

Address:

Feldstrasse 6 CH-6300 Zug

Testing location:

Zug Tel. 041-724 27 54

Applicant's Name:

MSR Electronics GmbH

Address:

Hr. W. Belz, Oberwilerstrasse 16 ,CH-8444 Henggart

Manufacturer:

MSR Electronics GmbH

Address:

Oberwilerstrasse 16 ,CH-8444 Henggart

Test specification:

Standards:

IEC 61000-6-2:1999, mod. EN 61000-6-2:2001
IEC 61000-6-3:1996, mod. EN 61000-6-3:2001
EN 61326-1:2006

Test procedure:

Type testing for Swiss and EU legal requirements

Procedure deviation:

None

Non-standard test method:

None

Test-specification:

The used test setup fulfils the specification described in the relevant standards

Test item description:

Trademark:

Model and/or type reference:

MSR 145 / Nr.20022

Ratings:

230 V / 50 HZ

Date of receipt of the test item(s):

5 September 2006

Summary of testing:

Passed

Applied standards:

No	Title	Standard (up dated)	pages	Verdict
E971228-b	RF disturbances	CISPR 22(2003), EN 55022(2003)	5	P
E971036-b	Radiated electromagnetic field	IEC/EN 61000-4-3(2001)	4	P
E971026-b	Electrostatic discharge	IEC/EN 61000-4-2(2000)	3	P

Verdicts:

P = passed, F = failed, NA = not applicable, NT = not tested

PC software

Setup

Setup

Reader

Reader

Viewer

Viewer

Online

Online

PC software

Overview

External processing of logger data is carried out using the PC programs Setup, Reader, Viewer and Online. The PC programs can be used for all logger types. The Setup enables the properties of the logger to be customised to user's requirements.

The Reader allows the user to transfer measurement parameters to a Windows PC. The Viewer is used to display data graphically or in table form or to export it as a text file (*.csv).

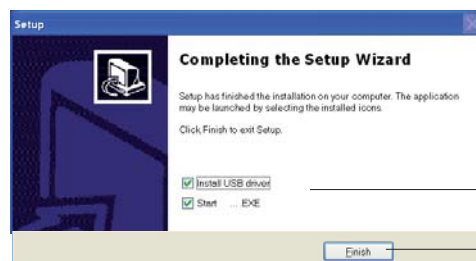
With the help of Online (and the built-in display) users can view measurement parameters and curves "live" on a PC.

Installation of the PC software on a PC

For installation you will require Windows administrator rights.

Insert the CD containing the PC software into the computer's CD-ROM drive. The installation procedure starts automatically*.

Completing installation



Initial installation: Select **Install USB driver**.

Click on **Finish**.

The logger symbol appears on screen.

If the PC is not set up for automatic installation, proceed as follows:

1. Click **Start > Run**
2. Click **Find > Look in:** (set to CD drive).
3. Select the file **Install_MSR.exe** and **Open**.
4. In the **Run** dialog box click **OK**.
5. The installation process will begin.
6. Follow the instructions and select: **Run Program** now.
7. During the initial installation select **Install USB driver**. See above, **Completing installation**.

* The program "Inno Setup" for installing the logger PC programs was written by Jordan Russell (www.jrsoftware.org, copyright Jordan Russell).

Setup

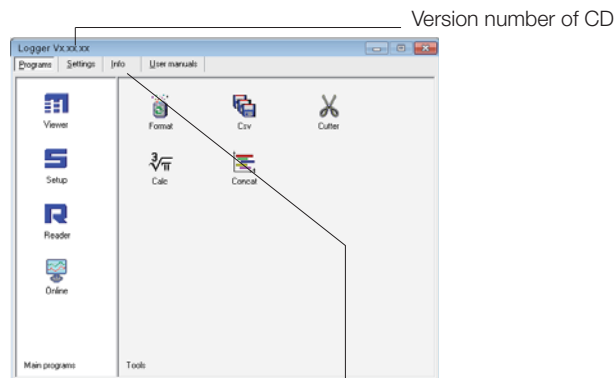
Reader

Viewer

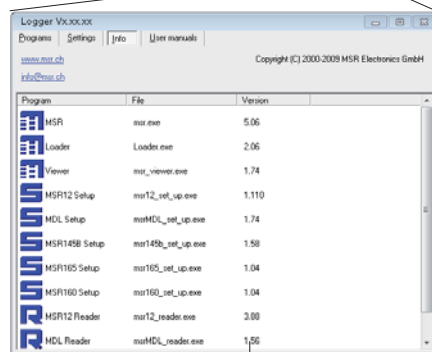
Online

Starting the logger Software

The logger software may be started by clicking on the logger symbol  or via **Start > Programs > MSR (folder) > MSR**. The logger program window appears:



Logger program window



Program	File	Version
MSR	msr.exe	5.06
Loader	loader.exe	2.06
Viewer	msr_viewer.exe	1.74
MSR12 Setup	msr12_set_up.exe	1.110
MDL Setup	msrMDL_set_up.exe	1.74
MSR145B Setup	msr145b_set_up.exe	1.58
MSR165 Setup	msr165_set_up.exe	1.04
MSR160 Setup	msr160_set_up.exe	1.04
MSR12 Reader	msr12_reader.exe	3.00
MDL Reader	msrMDL_reader.exe	1.56

Version numbers of PC programs

Setup

Reader

Viewer

Online

Uninstalling

The software is uninstalled via the computer's operating system (Programs > MSR > Uninstall MSR).

System Requirements

- Windows 2000 / XP / Vista / 7
- USB port

Setup

Reader

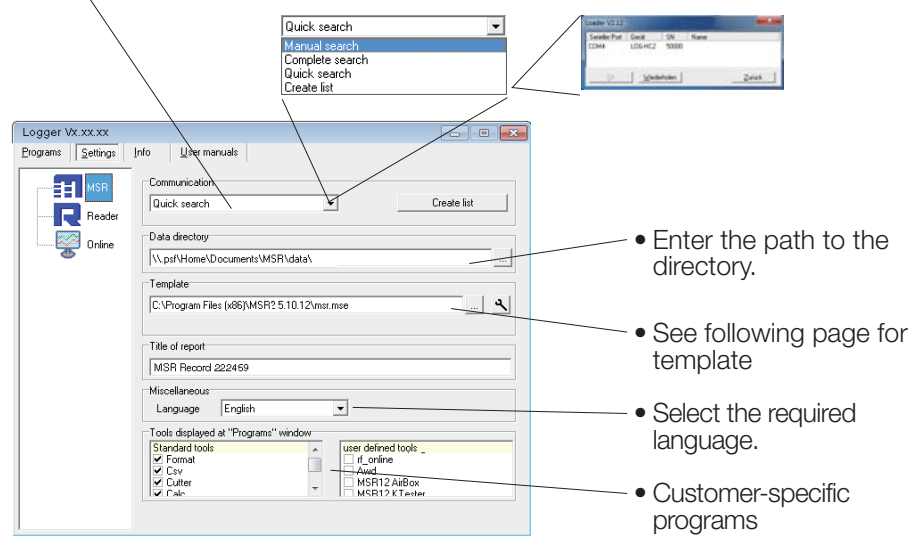
Viewer

Online

Preparation

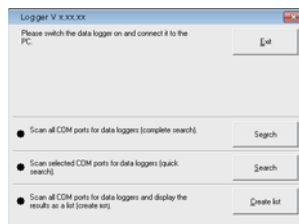
Before using the PC programs **Setup**, **Reader** and **Online**, the following preparations must be completed:

- Use the USB connecting cable to connect the logger with the PC.
- Before first use: Using logger symbol open the logger program window, select **Settings > Logger**.
- Select the rule by which the **Setup**, **Reader** and **Online** programs are to search for the required logger*.



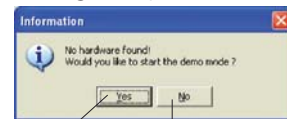
Logger program window

* One of the following windows will appear if a connection to a logger cannot be established using the current rule.



Loader Dialog

During Setup:



Starts the Setup demo mode

Starts the Loader dialog (see screenshot left)





Template

The template, selected via **Setting > MSR 255 (*.mse)**, defines which sensors the **Reader** reads out as standard or are displayed in **Online**. The template sets the colour of the trace, the positioning of its axis (left, right) and gives the sensors a name ("HUM, T1" is required to be displayed as "outside temperature", for example). Templates can be produced on the basis of examples contained in **Viewer** (->34).

Example

The temperature curves are required to be blue and oriented on the right hand axis in all display modes.

1. Assign right hand axis and blue colour shades to temperature in **Viewer**.
2. Save as template (Bluetemp.mse).
3. Generate new templates for **Reader** and **Online**: Select logger program window, **Settings MSR 255 > Template** , enter new name and path (Temperature.mse), then **Open**.
4. Open the still blank template (Temperature.mse) using .
5. **Import** the template that was created in **Viewer** (Bluetemp.mse). Select the required sensors (tick in checkbox) in the **Module** column and confirm with **Accept**.
6. Edit the displayed list: First select a sensor in the Module column and then choose **Edit**.
7. Change the name "HUM, T1" to "Outside temperature", and Accept.
8. Continue to make the necessary adjustments and confirm them with **Accept**.

Setup

Reader

Viewer

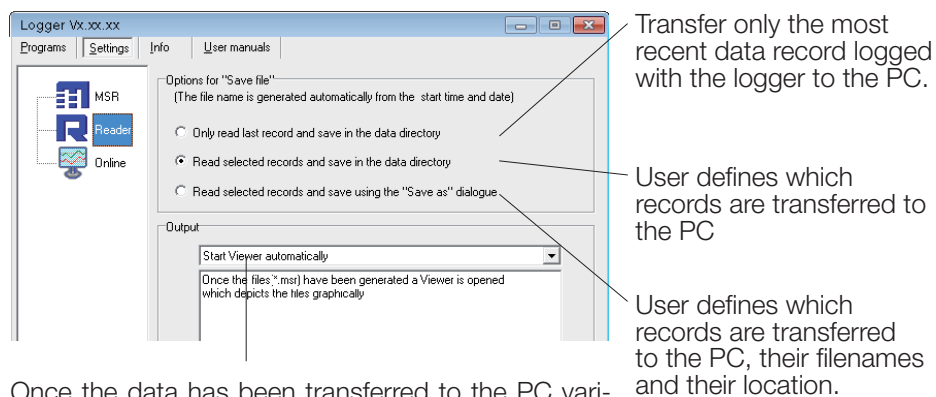
Online

Pre-adjustments - Reader

Enter the required options for the Reader** via Settings > Reader.

**Data records are transferred from the logger to a PC using the Reader.

Once data transfer is complete the Reader creates a data record (*.msr) from each logged record, names it and saves it in the corresponding directory. The bottom-most option allows the user to alter the suggested filename and location.



Once the data has been transferred to the PC various options are available to the user. Details may be found in the text window.

Example: "Automatically generate a text file"

In addition to the logger format file, the **Reader** creates a text file (*.csv), which can be opened with programs such as e.g. Microsoft Word or Excel.

Setup

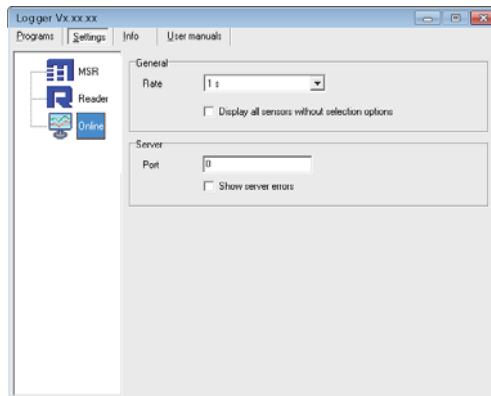
Reader

Viewer

Online

Pre-adjustments - Online

Note The functions described on this page are currently **not available** with this logger.



Setup

Reader

Viewer

Online

Completion of the preparatory measures

Upon exiting Settings the PC saves the settings that were last entered.

Once entry of the settings is complete, select Programs and start the required program.

Note: The following instructions assume that the preparations for using the PC programs have been completed.

Setup

Setup is used to select the sensors for which the logger is required to save measurement parameters, to enter the measurement frequency and to set the behaviour of the logger's memory. In **Setup** you can also define the start time for data recording and stop data recording.

The following subjects are dealt with in the Setup chapter:

Basic settings	26
Prediction	27
Reducing the volume of data	28
Conditional recording of measurement parameters (limits)	28
Setting the alarm limit	28
LED behaviour	29
Transferring basic settings to several loggers	39
User settings	30
Adjusting the channel properties.	31
Change basic parameter	33
Calibrating the sensors	34
Change display parameter.	35
Defining the logger display.	36
Formatting the memory	36



Basic settings

This page describes the most commonly used settings – the **Basic settings**. Information on further settings can be found on the following pages.

- Complete the preparations (->30).
- Start Setup (Setup symbol).
- Edit the **Basic settings** according to your requirements.
- Transfer the new configuration and the start conditions to the logger with **Write basic settings**.

The screenshot shows the 'Logger Setup V x.x.x.x' window. It has several tabs: 'General', 'Limits', 'User settings', 'Display', and 'Format memory'. The 'General' tab is active, showing fields for 'Logger Name' (T220459), 'Port' (COM5, SN400011, T220459), and 'Info and measurement parameters' (State: inactive, SN: 400011, Version: 0.12 [26126], Free memory: 100%, Time diff. (LOG-PC): -00:59:26, BAT: = 3.58 V). Below this are 'Basic settings' for sensors (p, T, p; ACCx, ACCy, ACCz; RH1, T1, RH2, T2; L; A1, A2, A3, A4) and 'Main storage rate' (t1= 0 h 0 min 1 s, t2= 0 h 0 min 1 s). There are also 'Record control' options (Limits active, Shock assistant) and 'Options during record' (blue LED flashes with t1, ring buffer). At the bottom are 'Write basic settings' and 'Stop record' buttons.

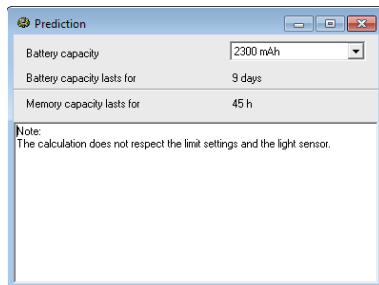
Annotations on the right side of the window:

- Exit setup
- Read the information and measurement parameters
- Freezes the selected options in the **Basic settings** and **Limits tabs** so that these can be transferred to other logger units ->29
- Enter the main storage rates
- Conditional recording of measurement parameters ->28

Annotations on the left side of the window:

- Name of the logger ->30
- Currently no data is being recorded (inactive) (active: data recording in progress)
- >37
- >36
- >30
- >30
- >30
- Overwrite oldest measurement parameters when memory is full
- Stop data recording
- Transfers the configuration, the start conditions and the PC time to the logger
- Blue LED flashes during data recording (☉ ->29)
- Define the sensors from which the logger should record data, together with the storage rate.
- The **50Hz (3200 Hz)** function is only available for the acceleration sensors (ACC).
- 50 Hz (3200 Hz)**
Acceleration values are measured at 3,200 Hz and saved at a frequency of approx. 50 Hz following digital filtration. Energy consumption increases for **50Hz (3200 Hz)** measurements.

Prediction



The maximum amount of data that can be recorded is influenced by:

- The number of sensors
- The measurement rate
- The battery capacity

With each click on **Prediction (Basic settings)** the program generates an approximate prediction using the selected basic settings.

Note: The Limit settings are not taken into account here.

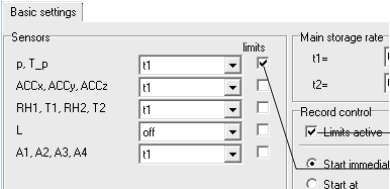
Reducing the volume of data

When making extensive recordings it is recommended that all sensors that are not required be “turned off”. This prevents unrequired measurement parameters from being saved.

- Under **Basic settings** turn "off" all unused sensor groups (see next section).
- To turn off individual sensors within one sensor group proceed as follows: Set the cut-in condition such that they are not activated during the planned recording (e.g. > 200 °C) (see next section).

Conditional recording of measurement parameters (limits)

If for example, you require only to record temperatures above 5°C and less than 20 °C, use the following procedure:

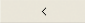


- Activate **Limits active** ① and the corresponding temperature sensor ②.
- The Limits tab opens.

Channel	Record limit	Alarm limit	Limit L1	Limit L2	Unit
p	inactive	inactive	0.0	0.0	mbar
T_a	>L1 and <L2	inactive	0.0	20.0	°C
ACCx	inactive	inactive	0.00	0.00	g
ACCy	inactive	inactive	0.00	0.00	g
ACCz	inactive	inactive	0.00	0.00	g
SHOCK	>L1 or <L2 (Shock)	inactive	0.0	0.0	ms
RH1	start: >L1, stop: <L2	inactive	0.0	0.0	%
T1	inactive	inactive	0.0	0.0	°C
RH2	inactive	inactive	0.0	0.0	%
T2	inactive	inactive	0.0	0.0	°C
L	inactive	inactive	0	0	km

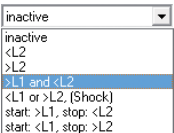
- In the columns **Record Limit**, **Limit L1** and **Limit L2** enter the cut-in conditions for the sensor.

The logger only records measurement parameters from the sensor T(p) above 5°C and less than 20 °C

- Return to the **Basic settings** with  and click **Write basic settings**. The limits will only be transferred to the logger with **Write basic settings**.

Setting the alarm limit

The logger can display an alarm if a certain measurement parameter drops below or exceeds a certain value. When the alarm condition occurs the red LED flashes once per second until the data recording is stopped.
Inputting the alarm condition is carried out in the same way as setting the cut-in conditions (see section Conditional recording of measurement parameters).



In the Alarm Limit, **Limit L1** and **Limit L2** columns enter the alarm conditions.
The alarm limits can be displayed in **Viewer**.

LED behaviour

The behaviour of the blue LED is defined via **Setup > Basic settings**.

		Options during record <input checked="" type="checkbox"/> blue LED flashes with t1	Options during record <input type="checkbox"/> blue LED flashes with t1
Situation		Behaviour of the blue LED	
Start time has been transferred to the logger	First 5 seconds	Double-flashes 5 times at 1-second intervals	
	Waiting for start	Double-flashes at 5-second intervals	
Data recording in progress	First 5 seconds	Flashes 5 times at 1-second intervals	
	After 5 seconds	LED flashes with main storage rate t1	LED does not flash

Setup

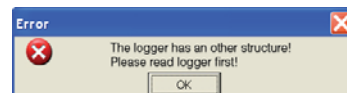
Transferring basic settings to several loggers

Use the following procedure to transfer basic settings that have already been input to several loggers:

- Start **Setup**.
- Connect the logger to the PC. (If several loggers are connected to the PC, select the COM port of the required logger)
- Enter the required values in the **Basic settings** tab.
- Set the cut-in and alarm conditions in the Limits tab.
- Use **Write basic settings** to transfer the basic settings to the logger.
- Disconnect the logger just configured and connect the next logger to the PC.
- Select the new logger via COM Port.
- **Caution!** If you wish to import the information and measurement parameters of the newly connected logger, you must first select the option **Freeze** ->24, so that the settings in the Basic settings and Limits tabs are not overwritten!
- Transfer the basic settings to the logger with **Write basic settings**.

Note:

- It is also possible to configure differently equipped loggers with a single basic setting. One logger may for example, not be equipped with any analogue inputs. The setup program then simply does not write any data to the settings saved in the logger for those analogue inputs.
- If a connected logger deviates too greatly from the first logger, this message appears:



User settings

To display the configuration saved in the logger select the Basic settings tab ① and click **Read basic settings**. The settings are now displayed in the **User settings** tab.



CAUTION

The changes made in the **User settings** tab and its sub-menus will only be transferred to the logger after clicking **Write user settings** ②.

Check the checkbox in order to enter/change the date, notes and „Calibrating the sensors“ on page 34.

Only for analogue inputs: Input of a "warm-up time" to warm-up analogue sensors before making measurements. A start-up time of zero = the sensor voltage is always ON.

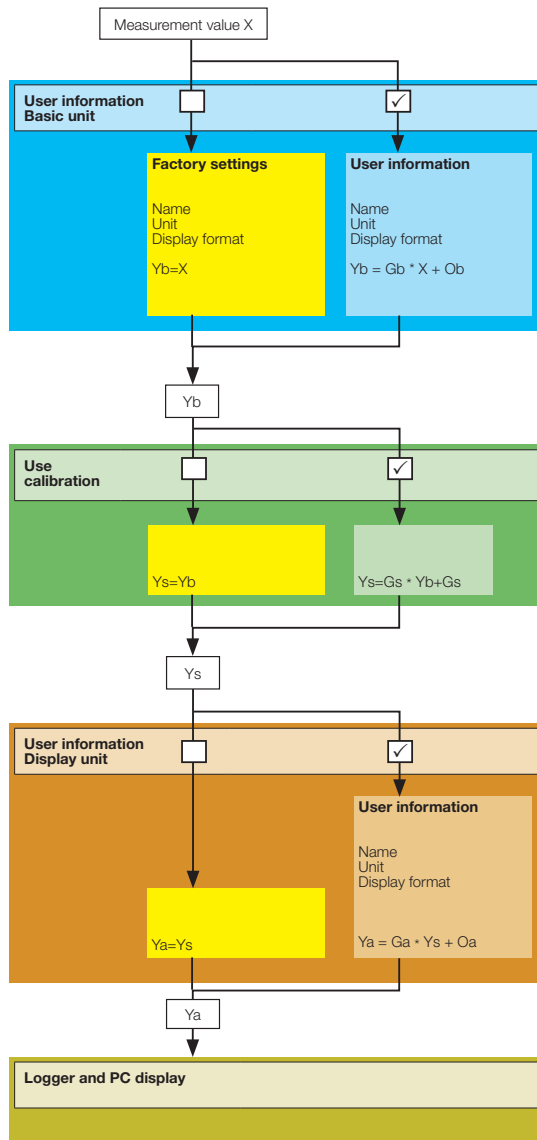
Adjusting the channel properties

Select the tab **Channels** ③ in order to change the name, unit, display format and calibration of a channel.

The following options are available (see following schematic):

- **Change basic parameter** (see page 33)
Changing the factory settings (name, unit, display format).
This information is used for calibration purposes among others.
- **Calibration** (see page 34)
Correction of the displayed values.
- **Change display parameter** (see page 35)
Change the factory settings or the information entered under **Change basic parameter**.
This information is used for the logger and PC display.





X Measurement value
Gb Base amplification
Ob Zero reference point
Yb Reference value

Yb Reference value
Px Calibration points (P1 and P2)
 $Gs = (P2_{Setpoint\ value} - P1_{Setpoint\ value}) / (P2_{Actual\ value} - P1_{Actual\ value})$
 $Os = P1_{Setpoint\ value} - Gs * P1_{Actual\ value}$
Ys Calibrated value

Ys Calibrated value
Ga Display gain
Oa Zero point display
Ya Display value

Setup

Change basic parameter

Change basic parameter is used to adapt the factory settings (name, unit, display format) to your requirements. These details are used among others, for **calibration** purposes.

Select the desired channel (e.g. analogue input A2) and then click **Change basic parameter**. Enter your adjustments ⑤ (e.g. Mbar instead of Volt).

To enter the conversion factor (e.g. Volts to Mbar) the following options are available:

- Enter the **amplification** and the **zero point**
 - Using the calculation assistant ⑥ enter the values for points P1 and P2 ⑦.
- The program will then calculate the amplification and the zero point.

Activate **Apply user information** by checking the checkbox ④ and then click **OK**. Transfer the changes to the logger by clicking **Write user settings**.

Note: Should you wish to use a different display unit to that used for calibration, then please use the function **Change display parameter**.

③

Max. 4 characters

Changes have been made to this channel.

Channel	Name	Unit	Format	modified	Calibration
1	p	mbar	0.0	yes	no
2	T_p	°C	0.0	no	no
3	ACCx	g	0.00	no	no
4	ACCy	g	0.00	no	no
5	ACCz	g	0.00	no	no
6	RH1	%H	0.0	no	not change...
7	T1	°C	0.0	no	not change...
8	RH2	%H	0.0	no	not change...
9	T2	°C	0.0	no	not change...
10	L	kLux	0.00	no	no
11	A1	V	0.00	no	no
12	A2	V	0.000	no	no
13	A3	V	0.00	no	no
14	A4	V	0.000	no	no

Read user settings Write user settings

Calculation assistant

Point P1
Target value 50
Actual value 1

Point P2
Target value 1000
Actual value 8

Resetting channel properties to the factory settings:

Uncheck checkbox ④ (**Apply user information**) and transfer the changes to the logger by clicking **Write user settings**.

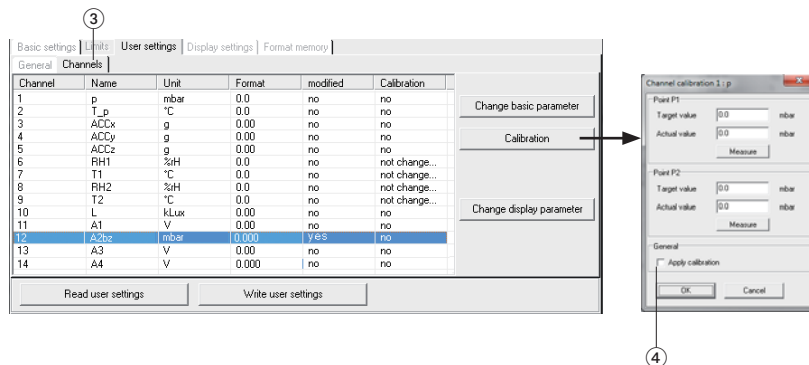
Calibrating the sensors

The sensors and analogue inputs can be calibrated using a 2 point calibration process. Those sensors marked “not changeable” in the **Calibration** column cannot be calibrated.

Select **User settings** and at the bottom click on **Read user settings**. Under **General > Calibration**, check the **Change values** checkbox.

Choose **Channel** ③.

Select a channel and then click **Calibration**.

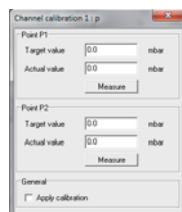


Calibration can be carried out a) manually or b) by measuring the signal and subsequently entering the target value.

a) Manual calibration

First enter the actual value and then the associated target value for points P1 and P2. Activate the completed calibration by checking the checkbox ④. Confirm your selection with **OK**.

b) Calibration using the measurement function



Apply the desired signal for point P1 and click **Measure**. The measured actual value is displayed. Enter the associated target value for point P1. Repeat this procedure for P2. Activate the completed calibration by checking the checkbox ④. Confirm your selection with **OK**.

Activate the completed calibration by checking the checkbox ④ and then click **OK**. If necessary, calibrate further sensors (channels). With **Write user settings** ② you can simultaneously transfer all of the completed calibrations to the logger.

Resetting the calibration to the factory defaults

Uncheck the checkbox ④ (Apply calibration) and transfer the change to the logger by clicking **Write user settings**.



CAUTION

If, following calibration, changes are made via „Change basic parameter“ on page 33, the performed calibration will be lost.

Change display parameter

Changes that are made with **Change display parameter** have no effect on the settings made with **Change basic parameter**. This allows you to always perform calibration using the units selected with **Change basic parameter**.

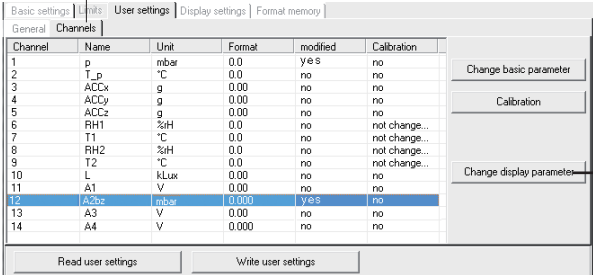
Select the desired channel (e.g. analogue input A2) and then click **Change display parameter**. Enter your adjustments ⑤ (e.g. psi instead of Mbar).

To enter the conversion factor (e.g. Mbar to psi) the following options are available:

- Enter the **amplification** and the **zero point**
- Using the calculation assistant ⑥ enter the values for points P1 and P2 ⑦. The program will then calculate the amplification and the zero point.

Activate “Apply user information” by checking the checkbox ④ and then click **OK**. Transfer the changes to the logger by clicking **Write user settings**.


③



Channel	Name	Unit	Format	modified	Calibration
1	p	mbar	0.0	yes	no
2	Lp	°C	0.0	no	no
3	ACCx	g	0.00	no	no
4	ACCy	g	0.00	no	no
5	ACCz	g	0.00	no	no
6	RH1	%H	0.0	no	not change...
7	T1	°C	0.0	no	not change...
8	RH2	%H	0.0	no	not change...
9	T2	°C	0.0	no	not change...
10	L	kLux	0.00	no	no
11	A1	V	0.00	no	no
12	A2bz	psi	0.000	yes	yes
13	A3	V	0.00	no	no
14	A4	V	0.000	no	no

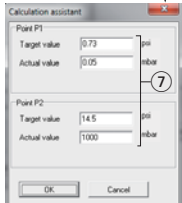
Max. 4 characters

⑤



④

⑥



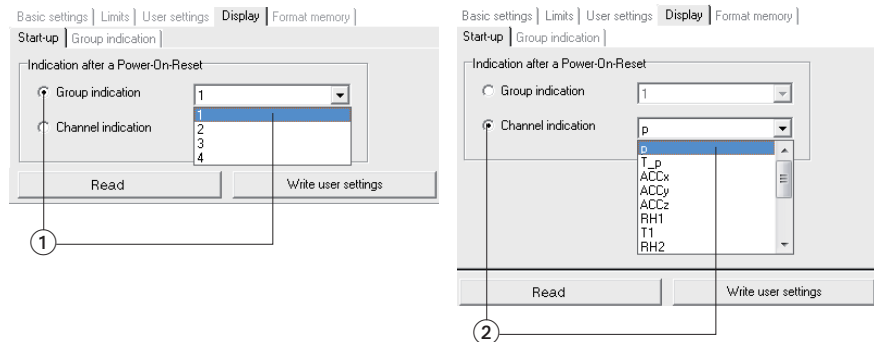
Resetting the properties to the factory settings:

Uncheck checkbox ④ (**Apply user information**) and transfer the changes to the logger by clicking **Write user settings** ②.

Defining the logger display

Select **Display** and then click **Read user settings** at the bottom.

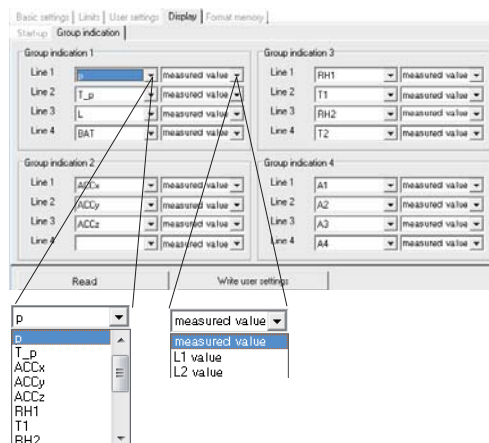
Define what the device should display following a power-on-reset under **Start-up**. A group of measurement parameters ① defined under **Group indication**, or a single channel ② can be displayed.



Transfer the desired settings to the device by clicking **Write user settings**.

Defining the group indication

Define which channels should be displayed together in one group indication under **Display > Group indication**. 4 group indications each with 4 channels can be shown. For each channel, the measurement parameter, limit L1 or limit L2 can be displayed.



Transfer the desired settings to the device by clicking **Write user settings**.

Open group indication on the device: See „Logger display and logger operation“ on page 11.

Formatting the memory

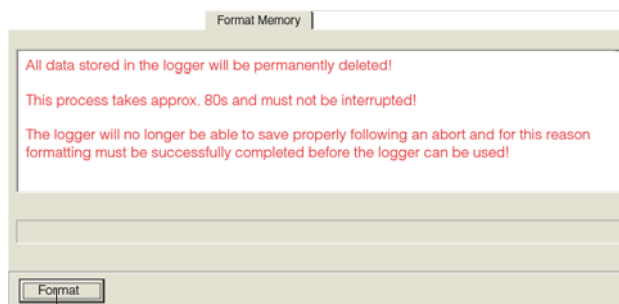


CAUTION

Formtting will erase all measurement parameters saved in the logger!

Formatting is used to delete all the measurement parameters saved in the logger.

Formatting the logger is carried out from the **Format memory** tab.



Deletes all measurement parameters saved in the logger

Reader

With the **Reader** users can selectively transfer data records logged with the logger to a PC. It does however free measurement records that have already been read out for overwriting.

Transferring data records to a PC

- Complete the preparations (->21) aus.
- Start the **Reader** (Reader symbol)



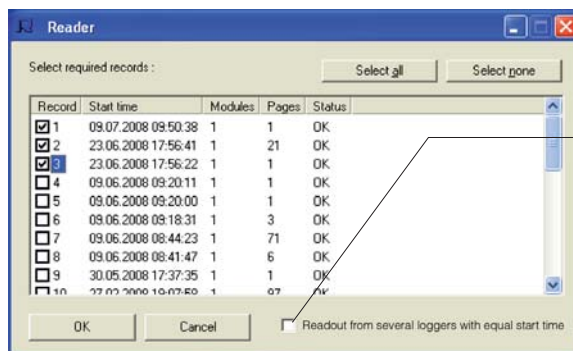
CAUTION

Once data transfer has started (Start) all data records saved on the logger can be overwritten if required, even if the circular buffer is deactivated in Setup.

- Begin data transfer with Start.

The options selected under **Settings > Reader** (->23) influence the next steps:

- Under the option **Read selected records** the following data entry dialog box appears:

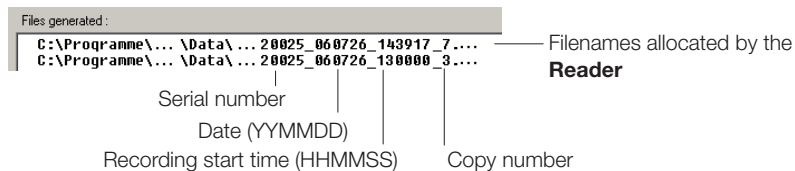


- Select the data records to be transferred.
- Click **OK**.
- Data records having the same start time are written together to one file.

Reader

- With the option **Read selected records and save with "Save dialog as"** under **Settings > Reader** (->23) the filenames and locations suggested by **Reader** can be overwritten.

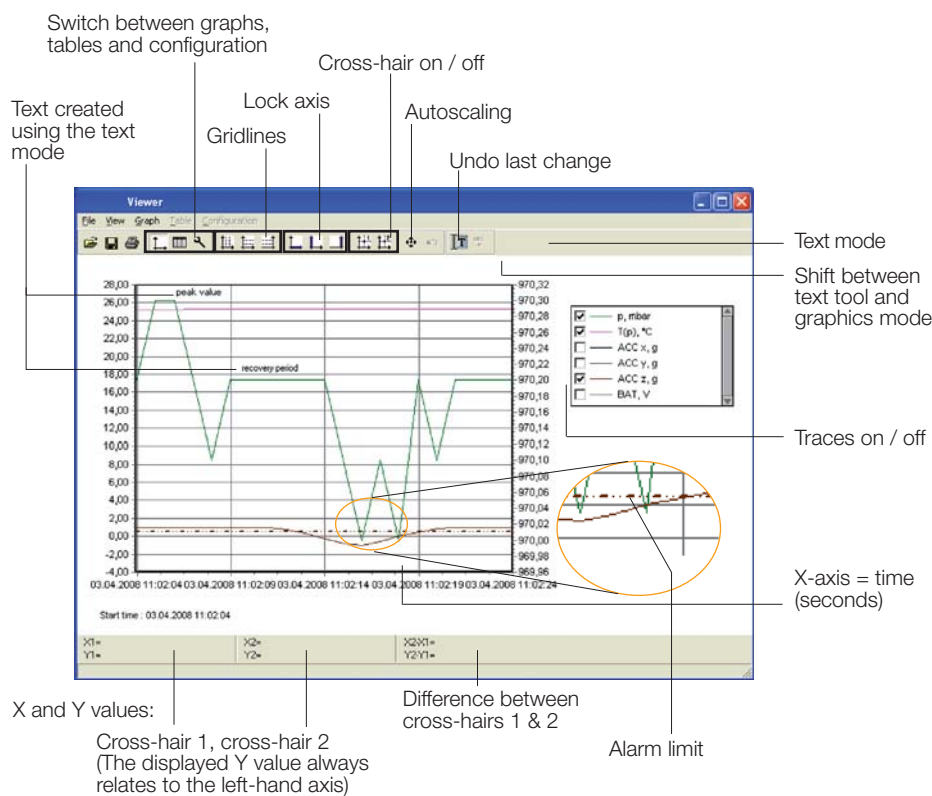
Once the data records have been saved on the PC a list of files created appears.



Viewer

Records created in **Reader** or **Online** may be viewed and edited on a PC with the **Viewer**. The measurement parameters may be displayed either in graph or in table form.

- Start the **Viewer** (Viewer symbol).
- Open a record (*.msr) via **File > Open**.



Viewer			
File View Graph Table Configuration			
Time	300046, p, mbar	300046, T(p), °C	300046, ACC z, g
2	970	25,2999992370605	0,0476126570837402
3	970,200012207031	25,2999992370605	0,409510612487793
4	970,099975585938	25,2999992370605	0,826550338745117
5	970,200012207031	25,2999992370605	0,999975681304932
6	970,200012207031	25,2999992370605	0,999975681304932
7	970,200012207031	25,2999992370605	0,961891160736084
8	970,200012207031	25,2999992370605	0,980528421020508

Displayed as a table

Alarm limit exceed

Viewer

Move traces

With right mouse button held down

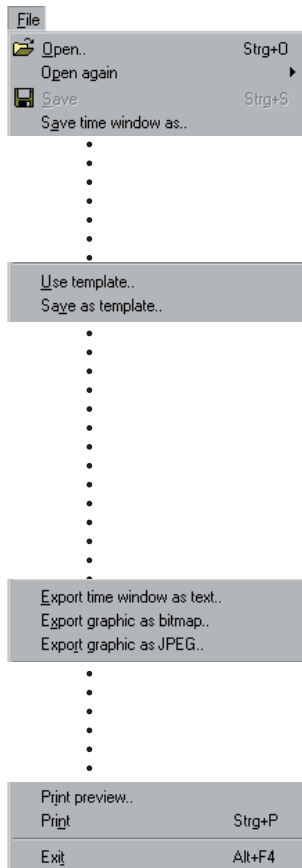
Enlarge section

Mark the required section with the left mouse button held down. See also **Graphics > Fixed axis**).



Cross-hair Move axis:
 Move centre:

Grab the axis, move with left mouse button.
Grab the centre, move with left mouse button.

Viewer




File

The **File** menu is used to **Open** records , to Reopen (**Open again**) the most recently used records and to **Save** the currently open record as displayed .

With **Save time window as** the measurement parameters of the displayed time window are saved. (The measurement parameters of the hidden traces are also saved). For further options see **Cutter** ->44.

Templates help to standardise the displays, enable easy repetition when reselecting the same sensors and the same printing format.

Creating templates: Adjust the display with **Graph** and **Configuration**  and save via **File > Save as template** (file type: *.mse).

Apply a template to the displayed record:
File > Use template then select the required template (*.mse).

Export Time window as text exports the measurement parameters of the displayed time window in *.csv format. The measurement parameters of the hidden traces are also exported.

The trace can be exported in **Bitmap** (*. bmp) or as **JPEG** forma.

Print preview opens a preview of the trace/graph.

Print  opens the print dialog box.

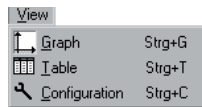
Exit closes the **Viewer**. If changes were made the user is asked whether the changes should be saved.

Note:

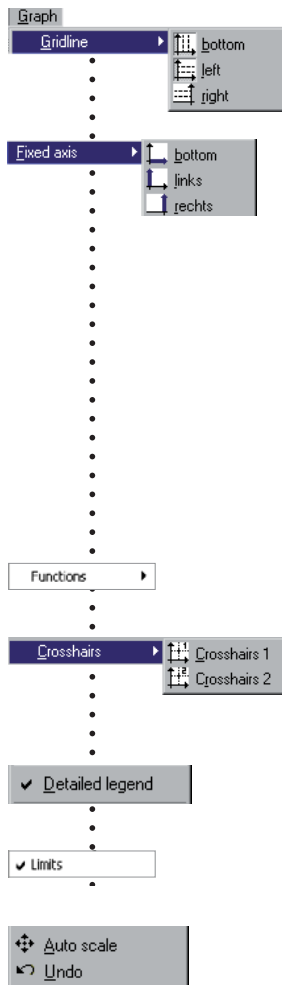
The program saves changes as "Template" (*. mse). The template is automatically saved in the record's directory. Template (*. mse) and record (*. msr) have the same name.

Upon **Opening** a record the **Viewer** searches for the template associated with that record. Should the template not be located in the same directory as the record then the standard format will be opened.

Viewer



View, Graph ,Table, Configuration



Graph

Gridlines can be shown for each axis (bottom, left, right).

Fixed axis simplifies the amount of detail shown within a time window or range of values.

- Select the required section with the left mouse button held down. The section is displayed enlarged.
- For closer viewing, lock the time window (L) or range of values to the left or right axis (L/ R). Several axes can be locked.
- With the left mouse button held down, select the required detail. The enlargement is displayed without altering the time segment or range of values of the locked axes.

A further click releases the lock.

Auto scale  clears all locked axes.

Calculation functions




Using the two **Crosshairs** values can be measured on the X and Y traces. X and Y differences can be evaluated with the second cross-hair. The Y values displayed are always associated with the left axis.

With **Detailed legend** traces can be turned on and off in the list of sensors.

If available: Display of the alarm limits (see ->39).

The complete record is displayed by selecting **Auto scale** .

Auto scale  clears all locked axes.

Undo  undoes the last enlargement. As long as the **Configuration** dialog  is not quitted, **Undo**  allows the last changes made to the displayed configuration screen to be undone.

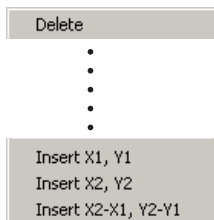
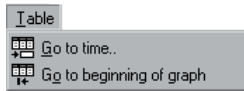





Table (Tabelle)

Go to time  allows users to jump straight to the line in the table with the required time.


Jump to beginning of graph  causes the table to jump to the first measurement values displayed in the graph.

Configuration


As long as the **Configuration**  dialog is not quit- ted, **Undo**  allows the last changes made to the configuration screen to be undone.

Text mode

Using the text mode you can insert texts at any place.

By clicking on  you can activate and deactivate the text mode.

Insert text:

- Click on . The viewer displays "Text 1" in the upper left corner.
- Drag the text field to the desired place.
- Double click on the text field and enter your required text.

Delete text:

- Click with the right mouse button on the text field and select **Delete**.

Text field with X and Y values:

- place the crosshairs on your chosen position to adopt the X and Y values you would like to use in the text field.
- Create a text field (see above) and click on the right mouse button. Select the desired representation.

Viewer

 Configuration  Strg+C

General Curves Time axis X left Y axis right Y axis Crosshairs

General


Curves

Time axis X

left Y axis

right Y axis

Crosshairs

Configuration  allows the display method of the measurement parameters to be set with the help of the configuration screens.


Entering title and footer information is achieved via **Configuration**  > **General**.


The associated sensor name, assignment to the left or right axis, the colour, line weight and style can be set for each curve.

Axis > inactive allows the graph curve to be shown or hidden as required.




CAUTION

Depiction of the curves using dots (**Configuration**  > **Curves** > **Dot: Yes**) requires more computing power, possibly leading to problems.

Using **Configuration**  > **Time axis X**, the time axis can be annotated, the time segment to be displayed can be set, and the Increment for the lettering and ruled lines, together with the **Format** for numbers can be entered.

Automatic axis annotation with an **Increment** of 0 (zero).

The number **Format** for the displayed X and Y values is entered via **Configuration**  > **Crosshairs**. The displayed Y value always relates to the left axis.

As long as **Configuration** is not quitted, users can undo the last changes made to the displayed configuration screen with .

Undo the last changes

Quit **Configuration** 

Quit **Configuration**  via **Graph** , or **Table** . Upon quitting, the **Viewer** saves the configuration.

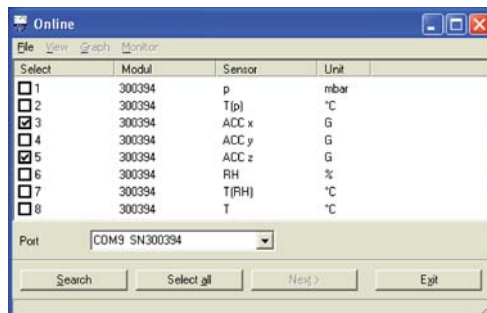
Viewer

Online

Online allows users to view the progress of the measurement parameters directly on-screen.

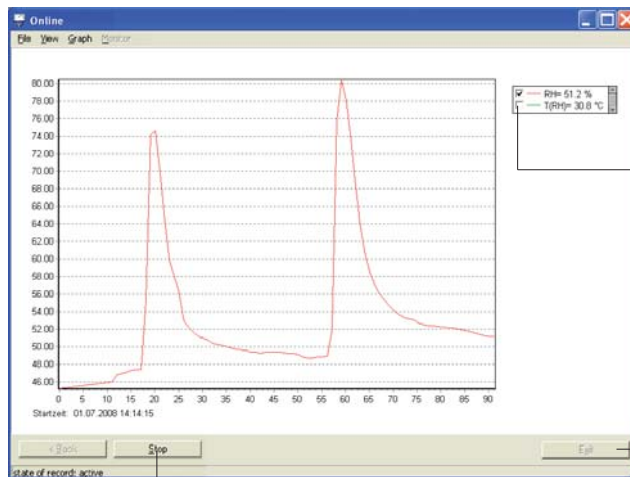
Procedure:

- Complete the preparations ->21.
- Start **Online** (Online symbol)



- Select the sensors that you wish to display.
- Click on **Next**.

- Online displays the measurement parameters graphically and numerically.



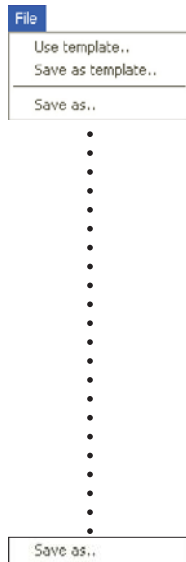
Turn trace on and off

Exits **Online**

Stop: A display
Continue: Continue

The logger is currently recording measurement parameters

Online

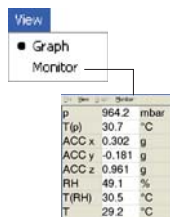


For recurring applications in **Online**, **Templates** assist in selecting the required sensors and adjusting the display to suit.

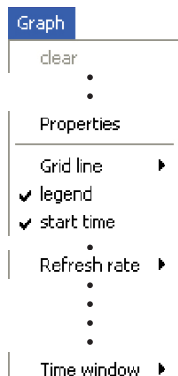
Create template: Start **Online** and select the required sensors. Select **Next>**. Use **Graph > Properties**, **Graph > Grid line**, **Graph > Legend** and **Graph > Start time to change the way the curve is displayed**. Via **Back** return to the trace display. Interrupt recording with **Stop**. Save the template via **File > Save as template**.

Apply the template to Online: **File > Use template** and select the required template (*.mse).

Once recording has finished by clicking on **Stop**, the recorded measurement parameters can be saved via **File > Save as**.



In the menu **View** the measurement parameters can be displayed as curves with **Graph** or as numerical values with **Monitor**. The font displayed on the monitor can be selected via the menu **Monitor > Font**.



Once recording has finished by clicking on **Stop**, the recorded measurement parameters and traces can be deleted via **Clear**.

The display can be changed via **Properties**, **Gridlines**, **Legend** and **Start time**.

Select the frequency (**Refresh rate**) with which measurement parameters are to be transferred to the PC.

In the **Time window** you can define the time period represented by the time axis.

Online

Utility programs

CSV _____

Cutter _____

Calc _____

Concat _____

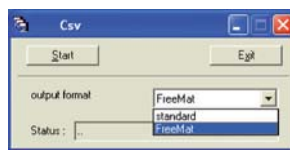


CSV

The **CSV** utility creates text files (*.csv or *.fmc) from data records (*.msr). Files saved in *.csv format can subsequently be opened and edited in a word processing or spreadsheet application. The *.fmc files can be transferred to FreeMat1.

Creating a text file

- Start CSV (**Logger Program window** > Tools > Csv).



- Select the output format (standard *.csv or FreeMat *.fmc)
- Click on **Start** and select the data record from which the text file is to be created. **CSV** creates a text file (*.csv) and saves it in the corresponding directory for that data record. Text file (*.csv) and data record (*.msr) have the same name.

Note on creating *.csv files: If a template (*.mse) exists for the data record in question, **CSV** takes this into account when creating the text file (*.csv).

Example: Opening a CSV text file with Excel

- Start the word-processing or spreadsheet program.
- Open the CSV file via **File > Open**.
- Under **File type**, select **Text Files**

	A	B	C	D	E	F
1	*CREATOR					
2	...	cutler a	[V1.20]			
3	...	2cgv.exe	[V1.28]			
4						
5	*					
6	Name	Pilatus				
7	SN	20025				
8	Revision	0				
9						
10	*STARTTIME					
11	31.07.2006	17:14:00				
12						
13	*MODUL					
14	NAME	20025	20025	20025	20025	20025
15	ID	[C102 V1.22]	[C102 V1.22]	[C102 V1.22]	[C102 V1.22]	[C102 V1.22]
16						
17	*TIMEDELAY					
18	s	0.3	0.3	0.3	0.3	0.3
19						
20	*CHANNEL					
21	TIME	T	RH	T(RH)	ACC x	ACC y
22						
23	*UNIT					
24	s	°C	%	°C	g	g
25						
26	*DATA					
27	31.07.2006 1:	20.875	48.86999999	20.37999997	-1.011999996	0.276999999
28	31.07.2006 1:	20.875	48.93000003	20.36999994	-1.011999996	0.276999999
29	31.07.2006 1:	20.875	48.93000003	20.36999994	-1.011999996	0.260000001
30	31.07.2006 1:	20.875	48.97000012	20.40999998	-1.011999996	0.260000001

CSV

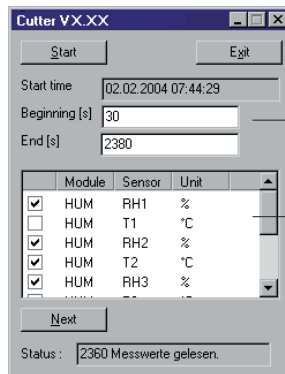
¹ Further details on FreeMat can be found in the section **FreeMat** ->56

Cutter

The **Cutter** utility creates an extract from a data record (*.msr).

Creating an extract from a data record

- Start the **Cutter** utility (**Logger Program window > Tool > Cutter**)



- Click on **Start** and select the data record from which the extract is to be created.
- Select the time window. **Beginning / End**.
- Select the sensors for which the measurement parameters are to be exported to a new data record and click **Next**.
- Enter the name and directory for the new data record. Click on **Save**.



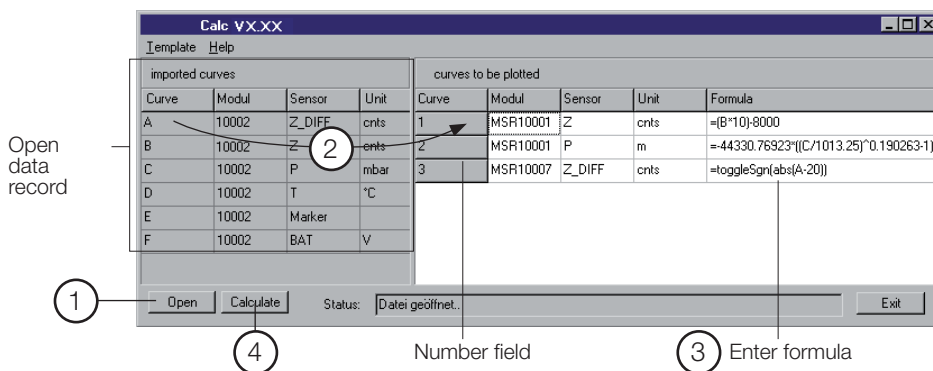
Calc

With **Calc** curves from existing data records can be linked to each other using formulae and saved as a data record (*.msr). The saved data record can be displayed and processed in the form of curves or as a table using the Viewer. Templates simplify the processing of recurring tasks.

Note: For making comprehensive calculations the FreeMat math software is available (see ->56).

Computing new curves

- Start **Calc** (Logger program window > Tools > Calc)



- Open data record (data origin)**
Click on **Open** to open the data record for which you want to perform calculations on the curve. It is possible to open multiple data records.
- Create new curves**
From **imported curves** select the curve that you want to use for your calculations and drag it – with the left mouse button pressed – to the right into the field for curves to be plotted. Repeat this procedure until the required number of curves is shown on the right.
- Enter formula**
Enter the formula to be used for the new curve into the **Formula** column. For this, use the capital letters on the left.
Example for a subtraction: A-C

You will find a list of the available functions at the end of this section or under **Help**.

Modify the text for the new curves

The entries in the columns **Module**, **Sensor** and **Unit** can be modified.

Calc

Modify the order of the new curves

With the left mouse button pressed, drag the number field to the required position.

Delete new curves

Click inside the number field of the curve to be deleted and then press the delete key. Via **Template > Delete plotted curve**, all new curves can be simultaneously deleted.



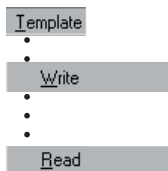
4

Calculating and saving the new curves

Click on **Calculate** then enter the name and set the directory for the new data record. Click on **Save**.

Note: The curves are saved as data records (*.mrs). The saved measurement parameters can be displayed and processed as a curve or as a table by the Viewer. Intermediate values are interpolated.

Only curves that overlap timewise can be calculated.



Creating a template for processing recurring tasks

Once you have created the new curves you can save their labels and formulae as a template (*.mse). (**Template > Write**).

Creating new curves using templates

Open the required template (*.mse) via **Template > Read**. This will automatically generate a number of new curves.

Multiple templates may be used to generate new curves. Each template generates a number of new curves.



Operators / brackets

+ - * / ^	Plus, minus, multiply, divide, to the power of
()	Open brackets, close brackets

Functions

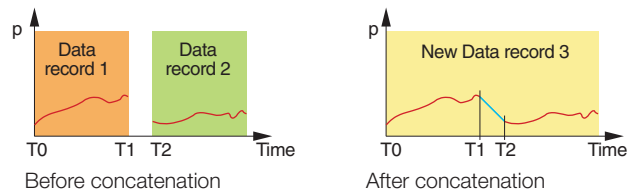
sqrt(no.)	Square root of the number
ln(no.)	Natural logarithm of the number (base e)
exp(no.)	Raise basis e to the power of the number
abs(no.)	Absolute value of the number
sgn(no.)	no. >0: sgn = 1 no. =0: sgn = 0 no. <0: sgn = -1
cos(no.)	Cosine of the number
sin(no.)	Sine of the number
tan(no.)	Tangent of the number
ctg(no.)	Cotangent of the number
arcsin(no.)	Arc sine of the number
arccos(no.)	Arc cosine of the number
arctan(no.)	Arc tangent of the number
arcctan(no.)	Arc cotangent of the number
sinh(no.)	Hyperbolic sine of the number
cosh(no.)	Hyperbolic cosine of the number
tangh(no.)	Hyperbolic tangent of the number
ctgh(no.)	Hyperbolic cotangent of the number
toggleSgn(no.)	Changes every second measurement parameter sign (plus/minus)

Further functions on request



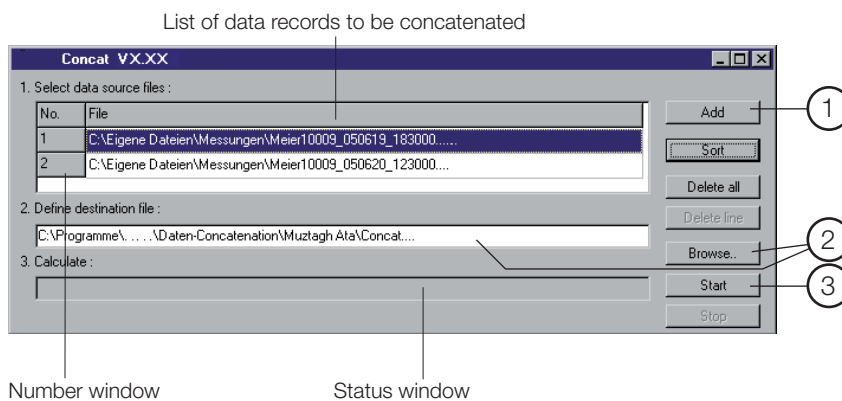
Concat

With **Concat** (concatenate = to link) data records can be linked together and saved as a new data record (*.msr). The newly created data record can be displayed and processed in the form of curves or as a table using the Viewer.



Concatenating several data records

Start **Concat** (Logger program window > Tools > Concat)



1 Select the data records to be concatenated

Open the data records that you want to concatenate by clicking **Add**. Note that the list must be in chronological order such that the oldest data record is at the top. Therefore either open the oldest data record first or sort the list afterwards (see below).

Sort the list alphabetically

Use **Sort** to sort the list alphabetically.

Data records that have automatically generated filenames (->38) can be chronologically sorted using **Sort**.

Modify the data record order

With the left mouse button pressed, drag the number field to the required position.

Concat

Delete all data records from the list
Use Delete all to remove all data records from the list.

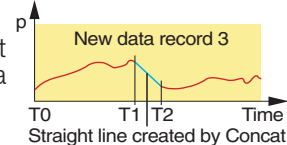
Delete one data record from the list
Select the data record to be deleted and click Delete line.

- ② **Enter the name and directory for the new data record**
Set the path to the directory using Browse and enter the filename, or use the input window to do this.

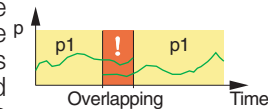
- ③ **Calculating the new data record**
Start the calculation process with Start. Cancel the calculation with Stop.

Note:

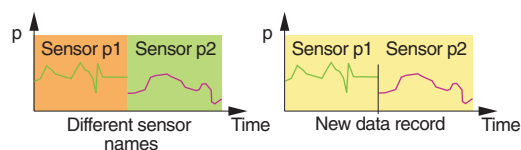
- Concat creates a straight line between the last data record of the first curve (T1) and the first data record of the second curve (T2).



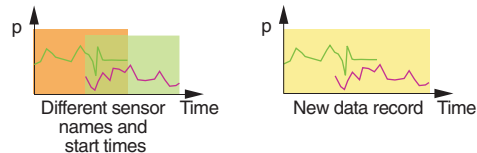
- If, for the data records to be concatenated, there are curves that overlap timewise and these have the same name (same module and sensor names with the same units), the calculation will be aborted and a corresponding message* will appear in the status window.



- If the module names, sensor names or units of the curves to be concatenated do not correspond Concat will be unable to join the curves and will create two curves.**

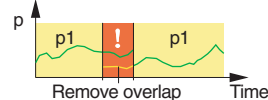


- With Concat you can superimpose curves with different module or sensor names.



* **Remove overlap**

Use the Cut utility to create an excerpt from a data record that does not overlap timewise with the next data record.



** **Modify module names, sensor names and units**

Use the Calc utility to match the module names, sensor names and units for the curves.

Concat

Additional software for PCs

FreeMat _____



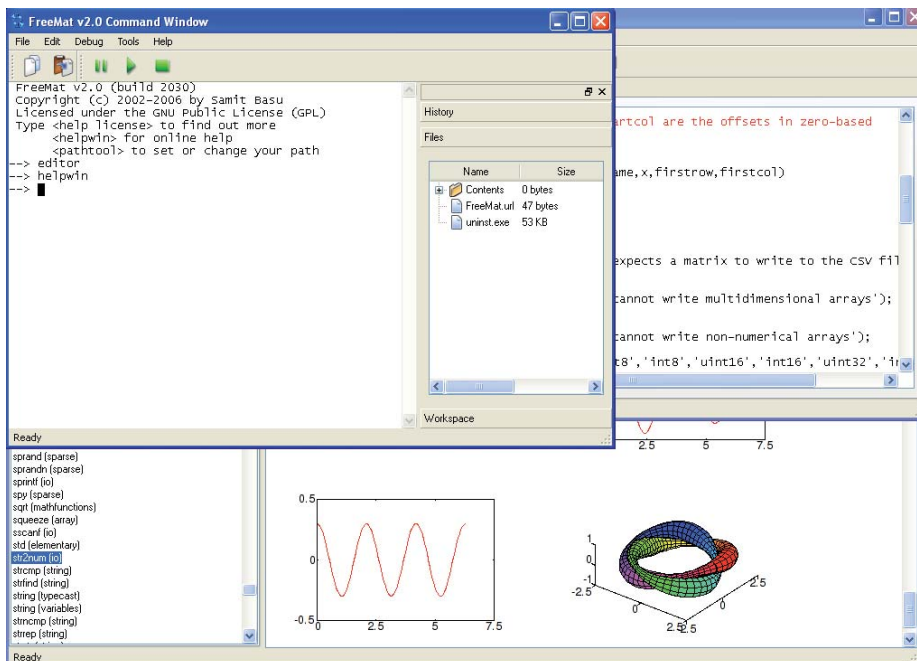
FreeMat

FreeMat is open source math software that can be installed from the logger CD (ADDITIONAL\FREEMAT). FreeMat can be used to carry out a wide variety of calculations.

How are data records transferred to FreeMat?

The Reader transfers the data recorded with the logger (records) to the PC. From these data records (*.msr) CSV creates FreeMat files (*.fmc). Using the scripts included these can be opened and edited in FreeMat.

More information on FreeMat can be found at <http://freemat.sourceforge.net/index.html>.



The following FreeMat scripts can be found on the logger CD under ADDITIONAL\FREEMAT\MSSCRIPTS:

plotmsr.m

Imports *.fmc files into the FreeMat environment and presents the data records graphically.

loadmsr.m

Imports *.fmc files into the FreeMat environment.

FreeMat

MSR Electronics GmbH

Oberwilerstrasse 16
CH-8444 Henggart
Switzerland

Tel. +41 52 316 25 55
Fax +41 52 316 35 21

info@msr.ch
www.msr.ch

