

USER- / INSTALLATION
MANUAL

WiSensys[®]
Wireless Sensing
System

Precautions and instructions

- Carefully read and fully understand these instructions before using any of the components of the WiSensys[®] system. Wireless Value accepts no responsibility for any malfunction of and/or trouble with this product or with a computer that is caused by the improper handling of this product and will deem such trouble or malfunction as falling outside the conditions for free repair in the warranty.
- The WiSensys[®] products are not designed for use in lifesaving equipment or systems where – through erroneous functioning of the products – it can be expected that this could result in personal injuries. Customers who use WiSensys[®] products for these means do so at their own risk.
- WiSensys[®] is a system that uses radio frequency (RF) as medium. RF performance is influenced by placement of antennae. All WiSensys products except PC software contain an external or internal antenna. Do not place this antenna very close to a metal surface. Keep a distance of at least 30 centimeters from large metal surfaces in order not to influence the performance of the system.
- WiSensys[®] is a registered trademark of Wireless Value.
- Microsoft[®] and Windows[®] are registered trademarks of Microsoft Corporation USA and are binding in the USA and all other countries.
- Figures and illustrations in this manual may be slightly simplified and may differ from the actual product.
- Specifications, design and other content are subject to change without notice.
- Version numbers in this manual can be different from the actual version number of the software you are using.
- Wireless Value takes every possible effort to make sure that the contents of this manual are true and complete. If you find any information to be incomplete or confusing, please contact your local dealer or Wireless Value. We shall not in any way accept any responsibility for the inability to use this product, nor shall we compensate for any loss from the inability to use this product due to incompleteness of or confusion caused by this manual.



- Usage of this symbol indicates a warning or an important notice that should carefully be observed.
- The products are covered by the directive 2002/96/EC of the European Parliament and of the Council on Waste Electrical and Electronic Equipment (WEEE).

Table of contents

1	Introduction	1
1.1	WiSensys®, Wireless Sensing System	1
1.2	Sensors	1
1.3	Base station	2
1.4	Range Extender	2
1.5	PC software SensorGraph	3
1.6	WebSensys web application	3
1.7	Compatibility	3
2	Installing the system	4
2.1	Installing the WiSensys PC software	4
2.1.1	Requirements	4
2.1.2	Installing Java	4
2.1.3	Installing SensorGraph	5
2.2	First run of SensorGraph	5
2.3	Installing / Configuring the WS-BU base station	6
2.3.1	Additional installation instructions	6
2.3.1.1	RS485 I/O Board	6
2.3.1.2	Analog I/O Board	7
2.3.1.3	Ethernet I/O Board	8
2.3.1.4	GPRS I/O Board	9
2.3.1.5	Optional memory	10
2.3.1.6	Connecting the alarm relay	10
2.3.2	Adding a base station	11
2.3.3	Configuring a new base station (advanced)	12
2.4	Installing the WS-REX Range Extender	14
2.4.1	Mounting the range extender	14
2.4.2	Adding the range extender to a WiSensys® system	14
2.4.3	Re-using a range extender on another base station	18
2.5	Installing / Configuring WS-DLT Sensors	20
2.5.1	WS-DLTi and WS-DLTc	20
2.5.2	WS-DLTa	20
2.5.3	WS-DLTth (thermocouple sensor)	22
2.6	Installing / Configuring WS-DLX sensors	24
2.6.1	Connecting a WS-DLXv/WS-DLXs sensor	25
2.6.2	Connecting a WS-DLXm sensor	27
2.6.3	Connecting a WS-DLXa sensor	27
2.6.4	Connecting to a WS-DLXc/cc/ct sensor	30
2.6.5	Connecting to a WS-DLXt sensor	31
2.6.6	Connecting to a WS-DLXac	31
2.7	Installing / Configuring WS-DLC sensors	32

2.8	Installing / Configuring energy sensors	32
2.8.1	The Plug version for 230 V/10A (WS-DLRs)	33
2.8.2	The connector version for 230 V/10A (WS-DLRc)	33
2.8.3	The 3-phase system 400 V/xxx A (WS-DLXp)	33
2.9	Adding sensors to the system	34
2.9.1	Mounting sensors	37
2.10	FastTX	37
2.10.1	Example calculations	37
2.10.2	Enabling FastTX	38
3	Using the System	39
3.1	Graph	39
3.1.1	Graphs information	41
3.1.2	Zoom-in, zoom-out inside the graph	42
3.1.3	Saving and printing a Graph	42
3.1.4	Hairline and tool tips	43
3.1.5	Annotations	43
3.2	Summary	44
3.3	Sensors	46
3.4	Logger	47
3.4.1	Durability of data	48
3.4.2	Load Log from disk	50
3.4.3	User annotations	52
3.4.4	Synchronization manager	52
3.5	Alarms	54
3.5.1	Adjusting alarms	56
3.5.2	Define new alarm	57
3.5.3	Removing an alarm	57
3.6	Graphs and equations	57
3.6.1	Define a new graph	58
3.6.2	Define a new equation	59
3.7	Configuration	60
3.7.1	Network level	61
3.7.2	Base station level	62
3.7.3	Range Extender level	64
3.7.3.1	Range extender information / settings	64
3.7.3.2	Removing a range extender	65
3.7.4	Sensors level	65
3.7.4.1	Shared sensor parameters	66
3.7.4.2	Sensor parameters	66
3.7.4.3	Sensor calibration	66
3.7.5	I/O Board level	67
3.7.5.1	RS485 I/O Board	67
3.7.5.2	Analog I/O Board	68
3.7.5.2.1	Analog channel settings	68
3.7.5.3	Ethernet I/O Board	69
3.7.5.4	GPRS I/O Board	70
3.8	Settings	71

3.8.1	General	71
3.8.1.1	Start up	71
3.8.1.2	Other settings	72
3.8.2	Logging	72
3.8.2.1	Logging from multiple SensorGraph instances	73
3.8.3	Alarms	74
3.8.4	E-mail settings	75
3.8.5	SMS settings	76
3.9	Reports	76
4	Warranty	78
4.1	Provisions for free repair	78
4.2	Inquiries	78
Appendix A	<i>Spare parts and accessories</i>	79
Appendix B	<i>LED signaling</i>	80
Appendix C	<i>Sensor settings</i>	82
Appendix D	<i>Base station settings</i>	84
Appendix E	<i>I/O board settings</i>	85
Appendix F	<i>Frequently asked questions (and answers)</i>	88
F.1	When starting SensorGraph a COM-port error appears.	88
F.2	How to configure a base station for use with WebSensys?	88
F.2.1	Configure WebSensys to accept the new base station	88
F.2.2	Global configuration	88
F.2.3	Further configuration of a base station with Ethernet connectivity	89
F.2.4	Further configuration of a base station with GPRS connectivity	89
F.2.5	Problems connecting to the server (Ethernet)	89
F.3	How to use MySQL as an external database?	90
F.4	What does 'discarding missing data' mean?	90
F.5	How to use multiple installations of SensorGraph with one database?	90
F.6	Why is the timestamp of all sensor data 1970, 1980 or 1990?	92
Appendix G	<i>GPRS Connection establishment problems</i>	93
Appendix H	<i>Retransmitting missed data from sensors</i>	95
H.1	Old style	95
H.2	New style	95
H.3	Missing data after sensor power reset	95
Appendix I	<i>uIP TCP/IP stack copyright notice</i>	96

1 Introduction

1.1 WiSensys®, Wireless Sensing System

WiSensys®: a wireless, easy to install, ready to use sensing system with data logging capability. WiSensys® is Wireless Value's product family for accurately measuring, securely transmitting and logging temperature and humidity conditions.

The wireless sensing system consists of sensor units and a base station. The sensors measure various conditions and transmit the measured data over a secure wireless link to the base station.

The coverage of the system is determined by the distance between the WiSensys® base station and the sensors. If the coverage area of 1 base station is not enough, up to 2 additional base stations can be added to increase the coverage area. All base stations can be networked to be able to collect all measurement data on one location.

1.2 Sensors

Available sensors are:

- WS-DLTi, digital temperature sensor
- WS-DLTa, analog temperature sensor (PT100, PT1000)
- WS-DLTc, digital humidity and temperature sensor
- WS-DLTh, thermocouple sensor (types J, K, S)
- WS-DLXa, analog sensor for 4-20mA process signals
- WS-DLXv, analog sensor for 0-30VDC process signals
- WS-DLXs, analog sensor for 0-4VDC process signals
- WS-DLXac, analog sensor for AC process signals
- WS-DLXc, digital sensor for switch contact signals
- WS-DLXcc, digital sensor for switch contact signals with sub-sampling (send on change)
- WS-DLXct, digital sensor for switch contact signals with sub-sampling (percentage of time open/closed)
- WS-DLC, digital CO₂, humidity and temperature sensor
- WS-DLXt, pulse counter
- WS-DLXp, pulse energy sensor
- WS-DLRs, energy sensor with a controllable relay (plug)

-
- WS-DLRc, energy sensor with 3 controllable relay (connector)
 - WS-DLXm, voltage sensor (measures in mV)

The sensors measure input values and transmit data to the base station. Sensing is done using a variety of sensors.

The intervals for sensing and transmission are set at installation time. Values can be changed using the WiSensys® PC software.

Each sensor has a unique identity. Optionally the following values can be assigned to each sensor: Friendly Name, Minimum trip value and maximum trip value. Trip values are used to signal an alarm condition to the base station when these values are exceeded.

Additionally, different types of sensors have additional options which can be set using SensorGraph of WebSensys.

1.3 Base station

WS-BU is the base station that receives the data from all WiSensys® sensors. The received data is either stored in the base stations optional non-volatile memory or is forwarded to a connected PC or PLC system.

WS-BU is also used when installing and changing the WiSensys® network. The base station receives settings for the sensors from the WiSensys® PC software and forwards these settings to all sensors in the network.

The base station is available in several versions with different communication capabilities. Today these include:

- WS-BU-rs232 with RS232 communication to the WiSensys® PC software.
- WS-BU-rs485 with MODBUS protocol over RS485/RS422, SD card for data storage and switched alarm output.
- WS-BU-ethernet with Ethernet connection to internet database or SensorGraph, SD card data storage and switched alarm output.
- WS-BU-gprs with GPRS connection to internet database.

1.4 Range Extender

The WS-REX is a range extender that can be used to extend the range of a WiSensys® system. The range extender can receive sensor data and relay it to the base station, thus extending the range between sensors and a base station. A single WiSensys® system can contain multiple range extenders. A range extender can either be configured to relay sensor data to the base station directly or to another range extender.

1.5 PC software SensorGraph

WiSensys PC software – SensorGraph – has the following main functions:

- Installation and maintenance of the system. Easy to use wizards guide you through the processes.
- On-line, real-time presentation of sensor values and storing sensor values to database or file (export) for off-line viewing and further processing of measurement data.
- File export for post-processing data in other applications.
- Generating and e-mailing automatic, user-defined reports.

1.6 WebSensys web application

Just like SensorGraph, WebSensys can be used for presentation of sensor data and some of the maintenance tasks. WebSensys is a web application and can be accessed from anywhere in the world. Only base stations with TCP/IP functionality are able to communicate with WebSensys:

- WS-BU-gprs
- WS-BU-ethernet

For more information about WebSensys, go to <http://wisensys.com>

1.7 Compatibility

This version of the manual is compatible with release R3A or greater of the WiSensys system and describes version R5B or greater of SensorGraph.

2 Installing the system

2.1 Installing the WiSensys PC software

2.1.1 Requirements



To install this software correctly, ensure that you have Windows® Administrator privileges. If you are unsure about your current level of privileges, contact your system administrator.

The application will run on a PC equipped with:

- Pentium® 4 or better processor (or AMD equivalent)
- Windows® XP (32 bit), Windows® 7 (32 bit, 64 bit)
- At least 200MB of free space on the hard drive for the application and JRE and 2GB or more additional free space for measurement data.
- 512MB of **free** RAM (1GB or more of total RAM or more recommended and required for large systems)
- a CD ROM drive for installation
- RS232 communication port or USB port for initial configuration. A RS232-to-USB converter is required when only USB ports are available on the PC.
- Oracle Java Runtime Environment 1.6 required. JRE 1.7 is not tested and will probably cause problems.

Additional free space is required for storing the measurements, 2GB or more is recommended but depends entirely on the system size and load (number of sensors, sample times).

The software is provided on the CD that came with your WiSensys® system.

2.1.2 Installing Java

For installing and running SensorGraph, it is necessary to install Oracle Java Runtime Environment 1.6. You can download the newest copy from <http://www.java.com> or use the version supplied with the SensorGraph installation.

Download the installation files and follow the installation wizard to install the software.

2.1.3 Installing SensorGraph

Put the CD-ROM into an optical drive, the wizard should start automatically. If the wizard does not start, run the “setup.exe” file.

- Select the language for the setup program. This is not the language that will be used in the SensorGraph application.
- Select **Next** to continue or **Cancel** to exit the setup at any time.
- Select the destination folder for SensorGraph. If you would like to select a different folder, click **Browse...**
- Select the components you wish to install:
 - **32-bit**; installs the 32-bit version of the application. This is recommended for most users.
 - **64-bit**; installs the 64-bit version of the application. This is needed if you are running a 64-bit operating system and 64 bit JRE.
 - **User Manual**; installs the user manual and creates a shortcut in the start menu group.
- Press **Next** to continue.
- A shortcut for the SensorGraph application will be created in your Start Menu. If you would like to select a different folder, press **Browse...**
- Press **Next** to continue.
- A shortcut will be created on your desktop. Deselect the task if no shortcut should be created. Press **Next** to continue.

The setup is now ready to begin the installation and the setup displays a summary screen.

- Press **Install** to begin the installation process.

The setup will copy the required files to your computer and finish the installation process showing the Finished screen.

2.2 First run of SensorGraph

SensorGraph will only run with the Oracle Java Runtime Environment installed. Go to <http://www.java.com/> to download the latest version of the software and install it before the first run of SensorGraph.

When you upgraded your SensorGraph installation from a version lower than R5A, some user specific settings will be lost. This is due to internal changes. The settings will have to be applied again after installation.

Unless you are upgrading from an earlier version of SensorGraph, you will want to add your base station to the system. Proceed to the next paragraph to add a new base station.

2.3 Installing / Configuring the WS-BU base station

The WS-BU base station is designed for wall mounting. For performance according to specification, please mount the base station on a non-metal wall. Make sure the antenna is mounted on the base station at all times during operation of the base station. Direct the antenna vertically facing either up or down. Horizontal placement of the antenna will negatively influence the maximum distance between sensors and the base station.

The following items are provided with the base station:

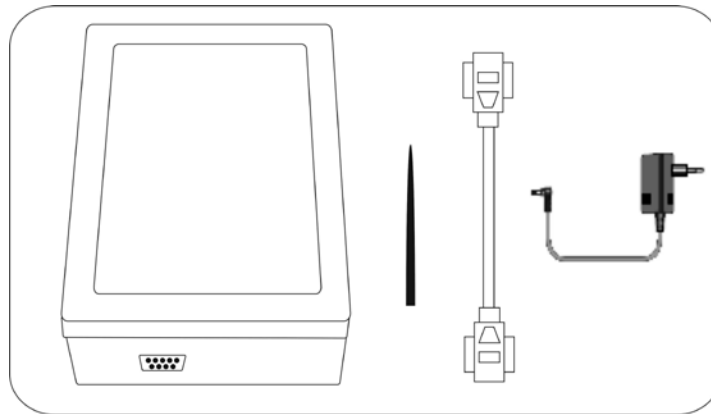


Figure 1: Base station, antenna, and RS232 cable and power adapter

1. Attach the antenna to the base station.
2. Connect the RS232 cable to the base station and to a PC with the WiSensys software installed. If you have an Ethernet I/O board, you can also connect the base station to your LAN.
3. Make sure you attached the antenna and then connect the power adapter to the base station. If you power up the base station without the antenna attached, the base station can be damaged.
4. Put the power adapter into a mains power socket.

2.3.1 Additional installation instructions

When the base station is equipped with additional digital or analog input/output ports, you will have to take the instructions below into account.

2.3.1.1 RS485 I/O Board

Open the cover of the base station with a screwdriver.



Be careful not to touch any component or part of the printed circuit board.

Feed a standard 2-wire (or 4-wire, for RS422) cable through a free cable gland in the base station and connect the wires to the connector shown in figure 2. RS485 only uses R+ and R- connectors.

Make sure both jumpers *JP1* and *JP2* are placed for usage as RS485 interface and both jumpers *JP1* and *JP2* are NOT placed for usage as RS422 interface, if you are using the RS485 mode.

The *GND* terminal is only used in certain RS422 applications.

If the base station is an end node in the RS485 network, mount a 120-Ohm resistor over the wires in the connector.

Fasten the cable gland and close the cover with a wing head.

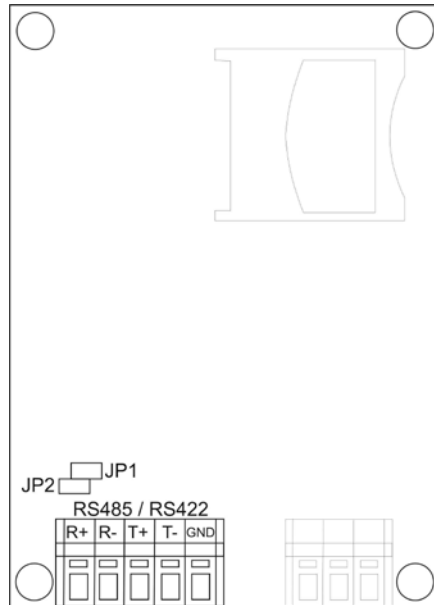


Figure 2: RS485 / RS422 connector

For a description of the Alarm connector, please refer to **Error! Reference source not found.**

For communication parameter settings, please refer to 3.7.5.1.

2.3.1.2 Analog I/O Board

Open the cover of the base station with a screwdriver.



Be careful not to touch any component or part of the printed circuit board.

This module has four output channels for analog signals. Each output channel can be connected with a standard 2-wire cable through a free cable gland in the base station to e.g. a PLC. Connect the wires to the connectors as shown in figure 3 for channels 1 to 4. Each channel has two jumpers for selecting between Voltage and Current output. Make sure both jumpers are placed for each channel in use, where I1V corresponds to channel 1 and I2V – I4V correspond to channels 2 – 4.

To assign sensors to output channels, please refer to 3.7.5.2.

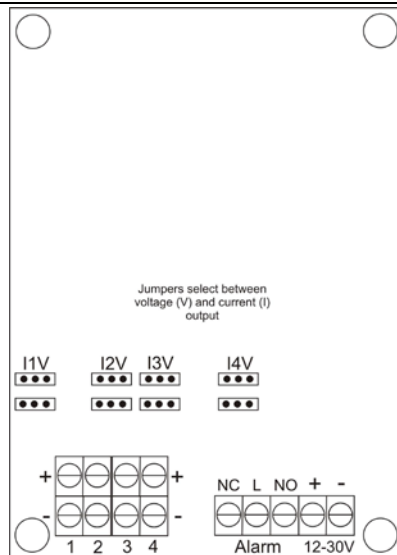


Figure 3: Analog output connector

For a description of the Alarm connector, please refer to **Error! Reference source not found.**

2.3.1.3 Ethernet I/O Board

Open the cover of the base station with a screwdriver.



Be careful not to touch any component or part of the printed circuit board.

Feed a standard Cat-5 cable through a cable gland in the base station and connect it to the Ethernet connection plug using a standard RJ45 connector. Fasten the cable gland and close the cover with a wing head.

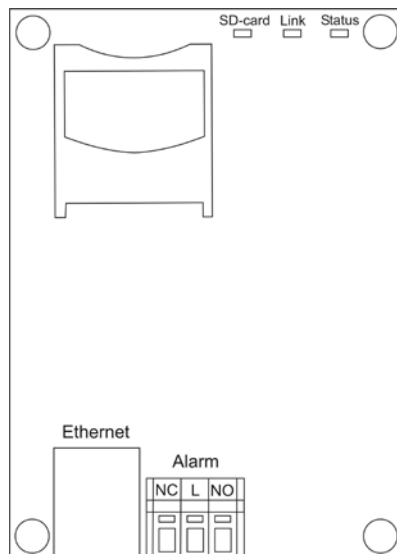


Figure 4: Ethernet output connector

For a description of the Alarm connector, please refer to **Error! Reference source not found.**

For communication parameter settings, please refer to 3.7.5.3.

For a description of the used LED's, please refer to Appendix B.

Note that if you are using the WS-BU-ethernet-01 version of the I/O board for use with SensorGraph over TCP/IP, the board accepts a maximum of three connections via TCP/IP and one connection on the serial port. This makes a total of four connections.

2.3.1.4 GPRS I/O Board

Open the cover of the base station with a screwdriver.



Be careful not to touch any component or part of the printed circuit board.

Mount a SIM card into the SIM cardholder. Close and fasten the lid of the SIM card. Failing to do this will result in problems with GPRS communication. When the modem has established a correct connection with the GPRS network, the red indication LED on modem will blink every 2 seconds.

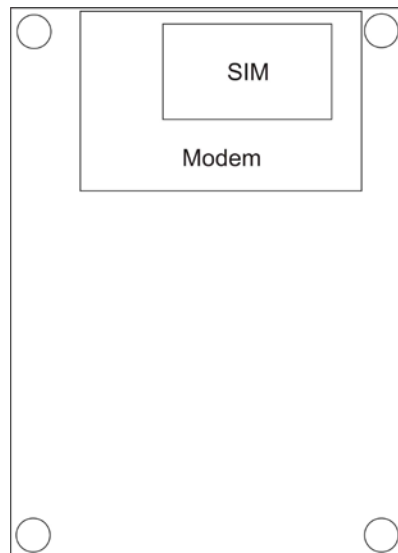


Figure 5: GPRS I/O Board with SIM cardholder



Make sure PIN codes are disabled or set to "0000" for the SIM card. If a PIN code is set, the I/O board will not work with the SIM card.

Close the cover with a screwdriver.

2.3.1.5 Optional memory

The RS485, Ethernet and Alarm I/O boards are equipped with a MMC/SD reader. If you want to use the storage function of the base station, an empty FAT16 formatted MMC/SD card has to be inserted into the slot. The card is filled with logging data until it is full or until 512 days have been logged. When the card is full, the oldest data is overwritten. If the 512 days limit is exceeded, older files will NOT be automatically removed.

The mentioned base stations will be delivered with an empty SD card.

To insert the card, open the cover of the base station with a screwdriver.



Be careful not to touch any component or part of the printed circuit board.

Insert the card by pressing it into the slot. Close the cover with a screwdriver.

When required, the card can be read using SensorGraph; see 3.4.2 for details.

2.3.1.6 Connecting the alarm relay

To connect an alarm device to the alarm delay on certain base stations, please refer to the diagram below.

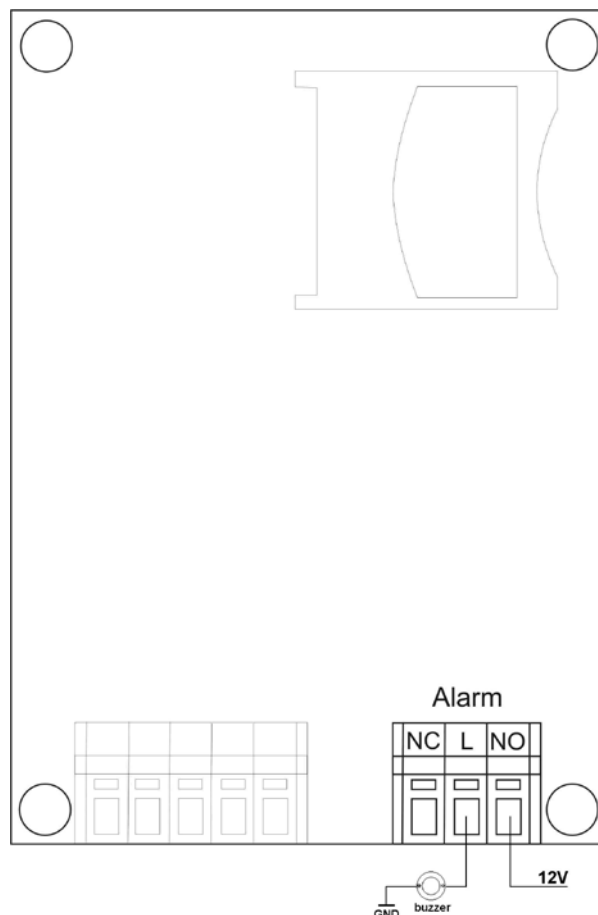


Figure 6: Connecting the alarm relay

2.3.2 Adding a base station

If you start SensorGraph for the first time, or want to add an additional base station, you need to add it to the SensorGraph system.

- Start SensorGraph if it is not running.
- Connect base station you want to add to a power source.
- Go to the **Configuration** tab.
- Right-click **WiSensys network**.
- Choose either **Add new serial host device...** when using a base station connected to a serial port or **Add new TCP/IP host device...** when using a base station connected to your local LAN. You can also use one of the buttons in the **WiSensys network** panel by clicking on **WiSensys network** in the **Configuration** panel.

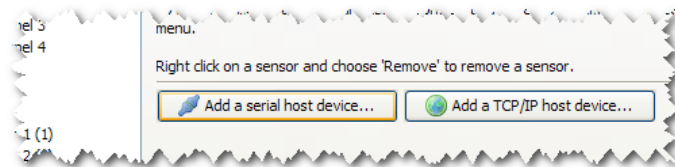


Figure 7: Adding a base station

- *Serial port*
 - Choose the COM port the base station is connected.
 - Press **OK** to add the base station. The discovery process will start automatically.

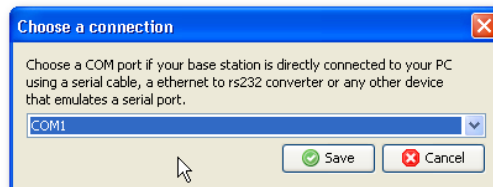


Figure 8: Choosing a serial port

- *TCP/IP*
 - Wait until the base station is discovered and appears in the table of found base stations.

- Select the base station and press **OK** to add the base station to the system. The discovery process will start automatically.

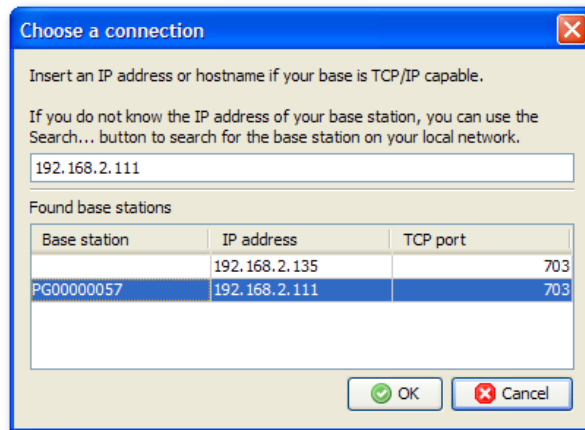


Figure 9: Choosing a base station connected to local network

If the base station does not appear or the base station has to be accessed via Internet, you can enter the IP-address the base station is connected to manually.

2.3.3 Configuring a new base station (advanced)



Configuring a new base station is only needed after programming new firmware or after resetting the base station to factory defaults.

- Start SensorGraph on the PC connected to the base station.

SensorGraph automatically detects not configured base stations each time the program is started, if not, perform the previous paragraph to add a base station. When there is no message from the base station displayed, please make sure the correct serial communication port has been added.

When a new base station is connected, the Base configuration wizard is started automatically.

- In the wizard, press **Next** to start configuring the base station.
- Network ID; choose a number that uniquely identifies your WiSensys system. The ID presented is generated randomly by the system and can be changed. Make sure adjacent systems have different numbers. Valid values are 1 to 99.
- Press **Next** to finalize configuring the base station.
- Press **Finish**.



You must re-power base station and plug it in again before you can continue.

Additional settings of the base station can be found under Configuration (see also 3.7). This paragraph also contains settings for optional I/O Boards. Make sure you complete these settings in order to use the full functionality of the I/O Board.

2.4 Installing the WS-REX Range Extender

2.4.1 Mounting the range extender

The WS-REX range extender is designed for wall mounting. For performance according to specification, please mount the range extender on a non-metal wall. Make sure the antenna is mounted on the range extender at all times during operation of the base station. Direct the antenna vertically facing either up or down. Horizontal placement of the antenna will negatively influence the maximum distance between WiSensys devices.

The following items are provided with the range extender:

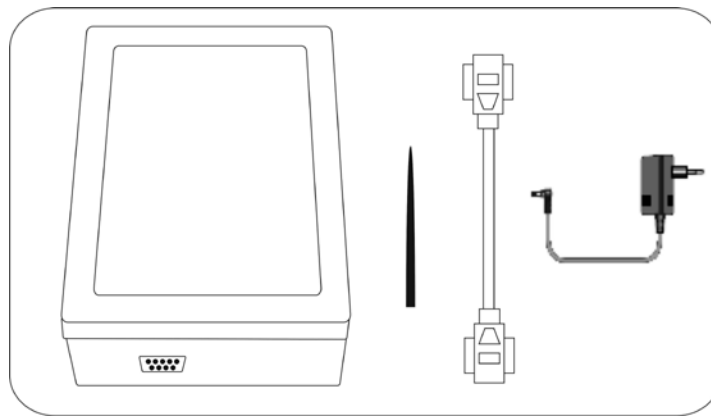


Figure 10: Range extender, antenna, and RS232 cable and power adapter

2.4.2 Adding the range extender to a WiSensys[®] system

Before a range extender can be added to a WiSensys[®] system, the base station must first be configured correctly, this is described in 2.3.

Up to 10 range extenders are supported per root base station.

Follow the following steps to add the range extender to the WiSensys system:

- Make sure SensorGraph has a connection to the base station.
- Connect the range extender to the same PC on a free serial port.
- Go to **Configuration** tab.
- Right-click on **WiSensys[®] network**.
- Choose **Add serial host device...**
- Select the serial port to which the range extender is connected.
- Press **Save**.

The discovery should now start and will result in the range extender wizard popping up, because the range extender is not yet configured for use. The wizard will guide you through the steps required for adding the range extender to the system. These steps are described below:

- Press **Next** on the first screen.
- The second screen allows you to choose the base station to add the range extender to. This base station manages the complete WiSensys® system and is the connection to either SensorGraph or WebSensys for the entire system. The wizard will show a list of all connected base stations to choose from.

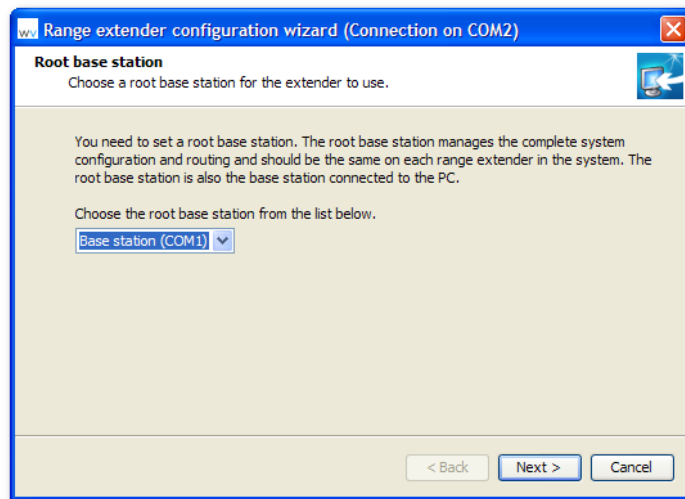


Figure 11: Selecting a common root base station

- Press **Next** after choosing a root device. Always choose the same root base station when using more than one range extender.
- The next thing to configure is the gateway. The range extender will relay all sensor data it receives to its gateway, to make sure that this data will eventually reach the base station. The gateway can either be the base station of the WiSensys[®] system or another range extender in the system. SensorGraph will give a list of all possible gateways for the range extender.

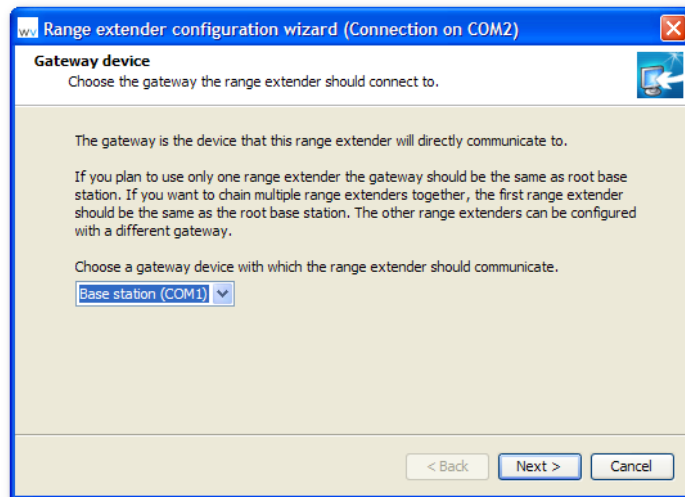


Figure 12: Selecting a gateway device

- Press **Next** after choosing a gateway.
- The last thing to configure is the identification number of the range extender; this can be from 2 to 11 and must be unique in the WiSensys[®] system. Identification number 1 is reserved for the base station.

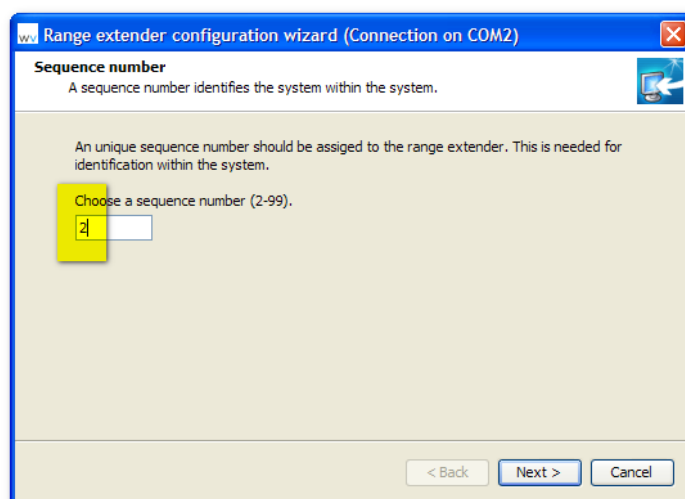


Figure 13: Choosing an identification number for the range extender

- Choose an ID and then press **Next** to continue.
- After the configuration has been done, the wizard will show a summary of the range extender configuration.

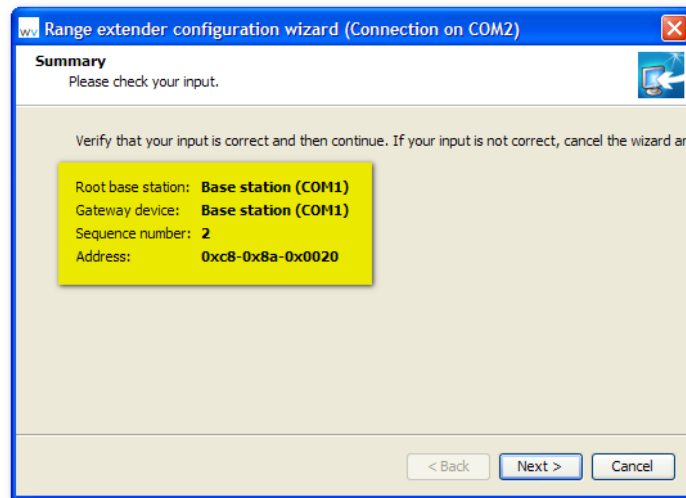


Figure 14: Summary of range extender configuration

- Verify the desired configuration and press **Next** to continue the configuration
- Pressing **Next** in the previous step will write the configuration to both the range extender and the base station and the wizard will show that the configuration is completed. Do not power off the base station or the range extender in the process.
- Now press **Finish** to close wizard. The base station and range extender will now be rediscovered to updated the configuration in SensorGraph.
- After you closed the wizard, go the **Configuration** tab.
- Verify that the range extender is added to the base station by locating it in the device tree under the base station you just added the range extender to.

If you have multiple range extenders, you can verify that the range extender is added by comparing the Unique ID in the settings of the range extender and the serial number on the back of the range extender.

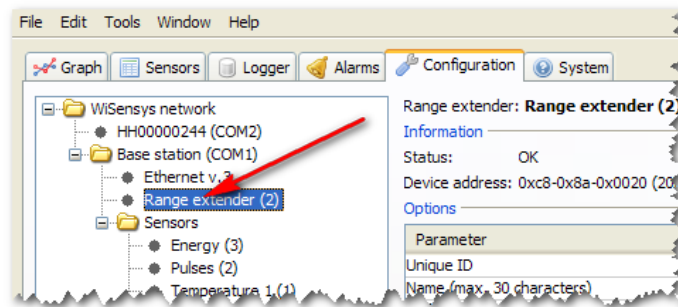


Figure 15: Range extender added

- Remove the range extender from SensorGraph by right clicking on it in the device tree and choosing **Remove**.

Do not remove the range extender from the base station but remove it from the **WiSensys network** (see the screenshot below for reference).

Verify the range extender by comparing the serial number shown in SensorGraph with the serial number on the back of the range extender.

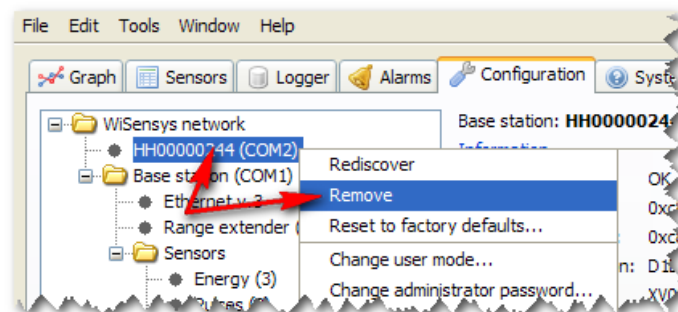


Figure 16: Removing the range extender from the WiSensys network node

2.4.3 Re-using a range extender on another base station

You must reset the range extender to factory defaults to be able to reconfigure the range extender. This action clears all settings in the range extender and enables SensorGraph to show the configuration wizard automatically again. Do the following to reconfigure the range extender:

- Connect the range extender to a serial port.
- Add a host device in the Configuration tab by right-clicking **WiSensys network** and selecting **Add a serial host device...**
- Choose the serial port you connected the range extender to and press **OK**.
- When the discovery process finishes, right-click on the range extender and select **Reset to factory defaults...**

- After resetting the range extender, the configuration wizard shows up again. You can choose to **Cancel** the wizard to configure the range extender later, or continue with the configuration by following the directions as explained in 2.4.2. If the wizard does not appear, restart SensorGraph.

2.5 Installing / Configuring WS-DLT Sensors

2.5.1 WS-DLTi and WS-DLTc

The following items are provided with these sensors:

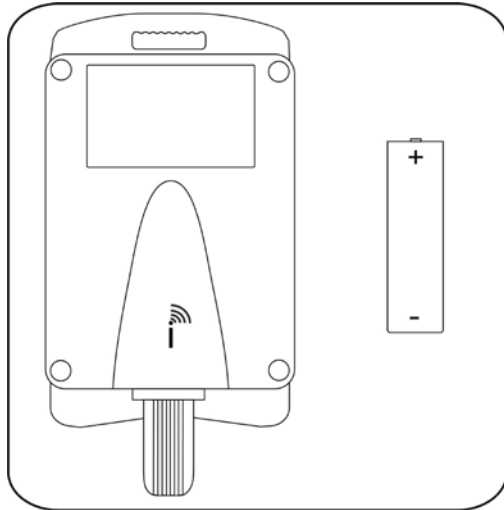


Figure 17: WS-DLTi and WS-DLTc sensor with battery

Open the cover of the sensor by removing the four screws with a matching screwdriver.



Be careful not to touch any component or part of the printed circuit board.



Do not insert a battery into the sensor yet.

Follow the pairing procedure as described in 2.8.1.

2.5.2 WS-DLTa

The following items are provided with these sensors:

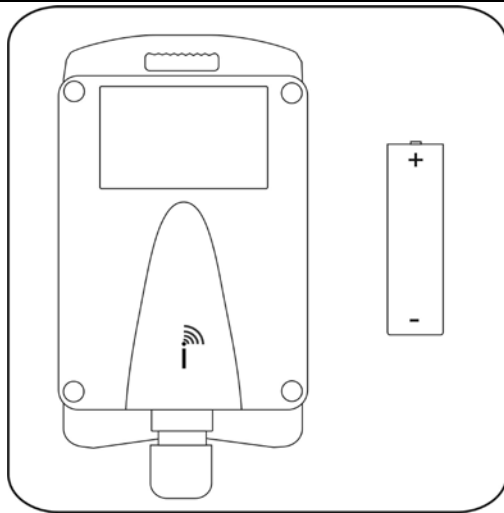


Figure 18: WS-DLTa sensor with battery

Open the cover of the sensor by removing the four screws with a matching screwdriver.



Be careful not to touch any component or part of the printed circuit board.

Connect a standard 2-wire or 3-wire Pt100 probe to the connector of the WS-DLTa-p100 or a standard 2-wire or 3-wire Pt1000 probe to the connector of the WS-DLTa-p1000 sensor as shown in figure 19. Always use both negative terminals when connecting a 3-wire probe.



When a 2-wire probe is used, make sure to interconnect the two negative terminals.

DLTa-p100 and DLTa-p1000

- 2-wire
- Not recommended for PT100

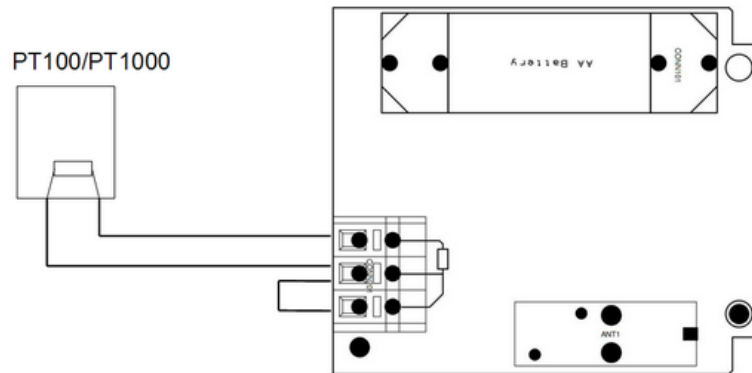


Figure 19: Connecting a 2-wire sensor probe

DLTa-p100 and DLTa-p1000

- 3-wire

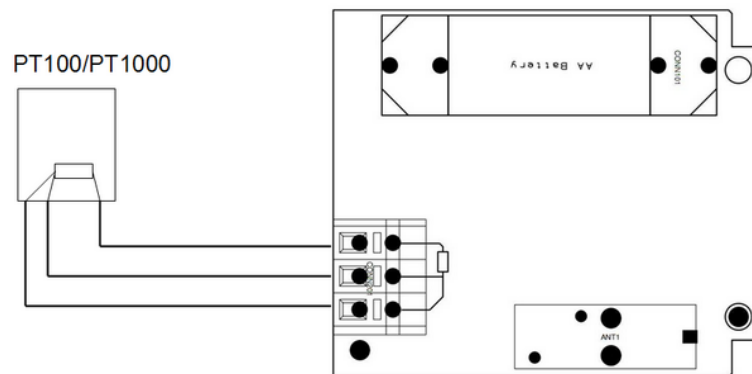


Figure 20: Connecting a 3-wire sensor probe



Do not insert a battery into the sensor yet.

Follow the pairing procedure as described in 2.8.1.

2.5.3 WS-DLTh (thermocouple sensor)

The following items are provided with these sensors:

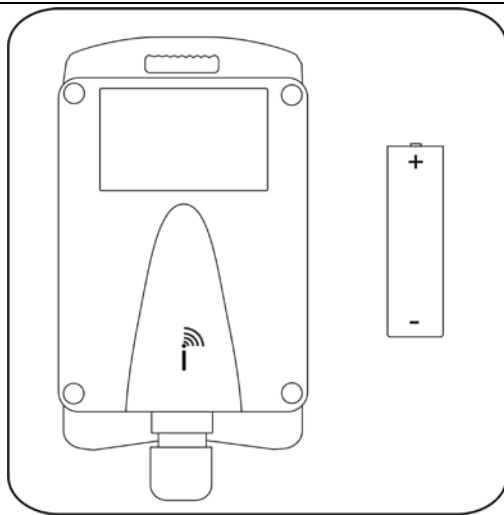


Figure 21: WS-DLTa sensor with battery

The sensor can also be delivered with an external power supply instead of a battery.

Open the cover of the sensor by removing the four screws with a matching screwdriver.



Be careful not to touch any component or part of the printed circuit board.

Connect a standard thermocouple probe of type K, J or S according to the scheme below.

DLTh (Thermocouple)

- Also External powered

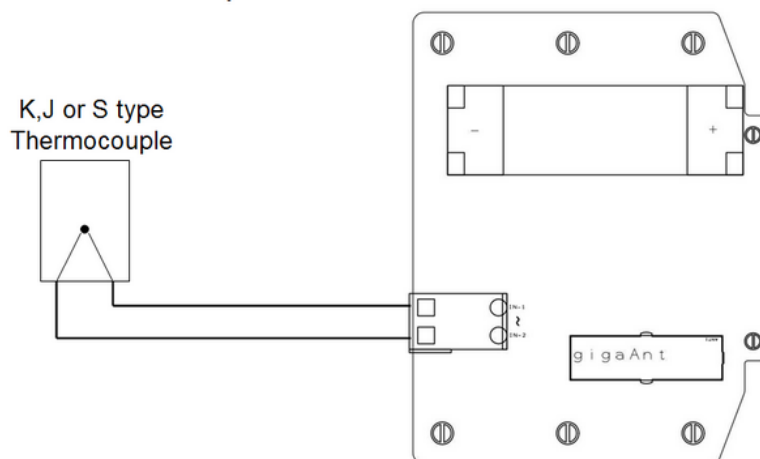


Figure 22: Connecting a thermocouple probe

The type of the probe must be configured in SensorGraph later after pairing as described in 3.7.4.2.



Do not insert a battery into the sensor yet.

Follow the pairing procedure as described in 2.8.1.

2.6 Installing / Configuring WS-DLX sensors

The following items are provided with these sensors:

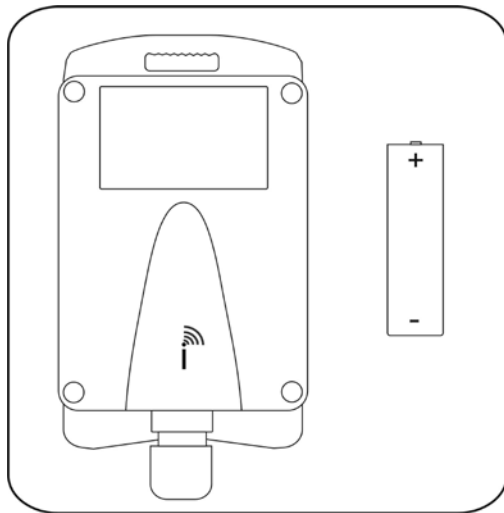


Figure 23: WS-DLX sensor with battery

Open the cover of the sensor by removing the four screws with a matching screwdriver.

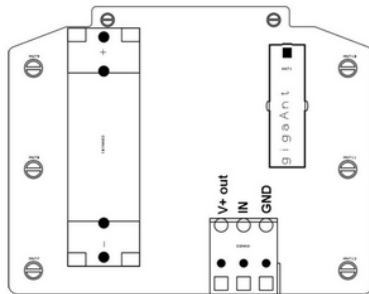


Be careful not to touch any component or part of the printed circuit board.

The WS-DLX family is delivered as a battery-powered unit or as an externally powered unit without a battery.

Sensor connections

- Battery powered



- External powered with or without switch

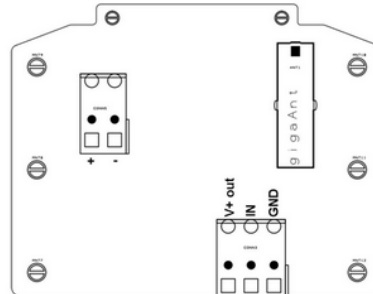


Figure 24: Sensor connections on DLX sensors



Do not insert a battery into the sensor yet.

Follow the pairing procedure as described in 2.8.1.

2.6.1 Connecting a WS-DLXv/WS-DLXs sensor

To connect an external probe with its own power supply to a battery powered DLXv sensor, you need to connect at least the Vin and GND terminal.

See the figure below if you want to connect an external probe with its own power supply to an externally powered WS-DLXv or WS-DLXs sensor.

DLXv (0..30V) and DLXs (0..4V)

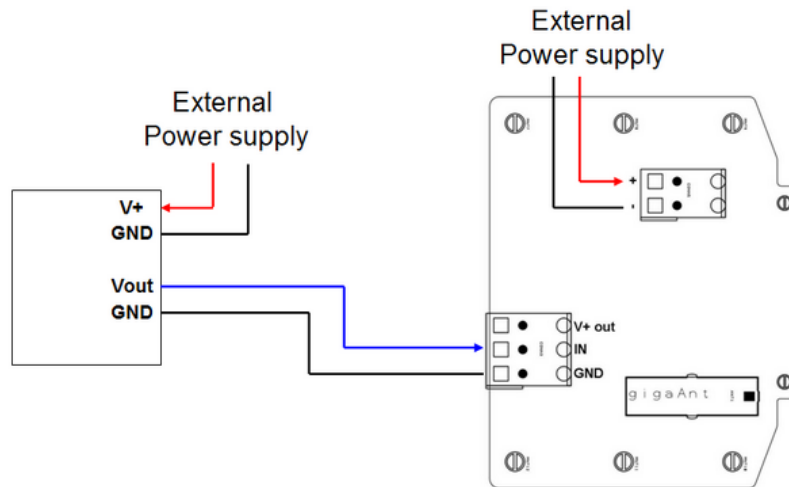


Figure 25: Connecting an externally powered probe to an externally powered WS-DLXv or WS-DLXs

It is also possible to power the external probe by the WS-DLXv or WS-DLXs sensor. See the figure below for the connections.



The maximum power consumption of the external probe may not exceed 100 mA.

DLXv (0..30V) and DLXs (0..4V)

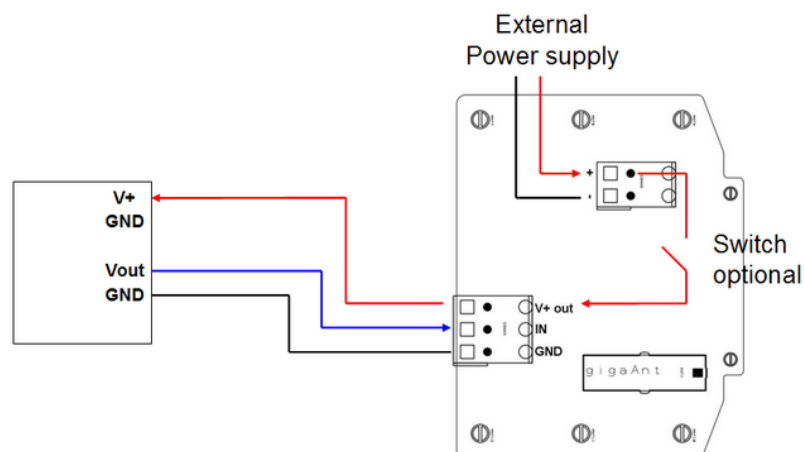


Figure 26: Connecting an external probe to an externally powered WS-DLXv or WS-DLXs and powering the external probe by the sensor

In order to save energy (in case the external power supply is a battery or an accumulator) this sensor can be supplied with a switch in the electronic circuit.

Separate order codes are available in the price list (WS-DLXv-switch or WS-DLXs-switch). Settings with respect to the switch can be found in 3.7.4.2.

Make sure the WS-DLXv/s sensor can deliver the required power to the external probe. Refer to the manual of the external probe and the datasheet of the WS-DLXv/s sensor to see if the power requirement can be met by the WS-DLXv/s sensor.

Follow the pairing procedure as described in 2.8.1.

2.6.2 Connecting a WS-DLXm sensor

This sensor can be delivered with battery or with an external power supply. For connection, see the figure below.

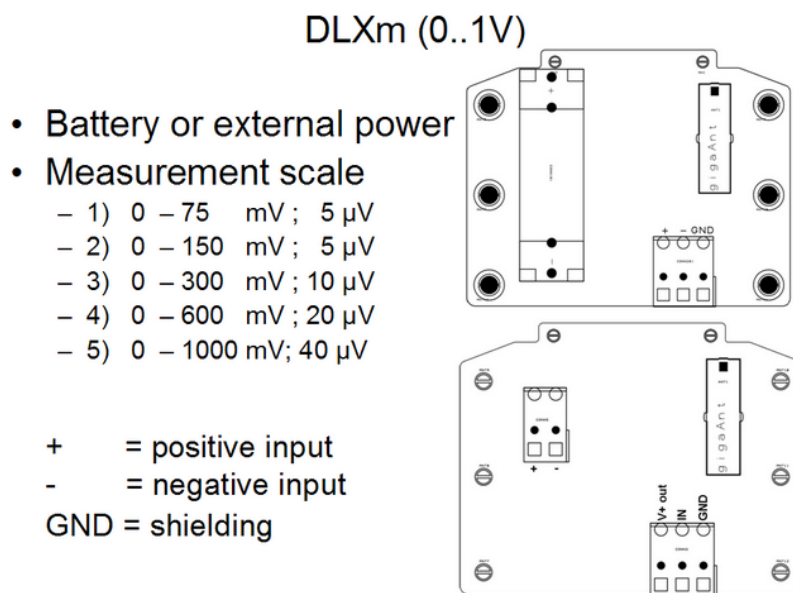


Figure 27: Connections and measuring scales of WS-DLXm

See the figure below for connecting an external probe.



Be careful not to touch any component or part of the printed circuit board.



Do not insert a battery into the sensor yet.

Follow the pairing procedure as described in section 2.9.

2.6.3 Connecting a WS-DLXa sensor

To connect an externally powered probe to a battery powered DLXa sensor, you need to connect at least the IN and Vout terminal.



Be careful not to touch any component or part of the printed circuit board.



Do not insert a battery into the sensor yet.

To connect an external probe with own power supply to an externally powered WS-DLXa see the figure below.

WS-DLXa (0..24mA)

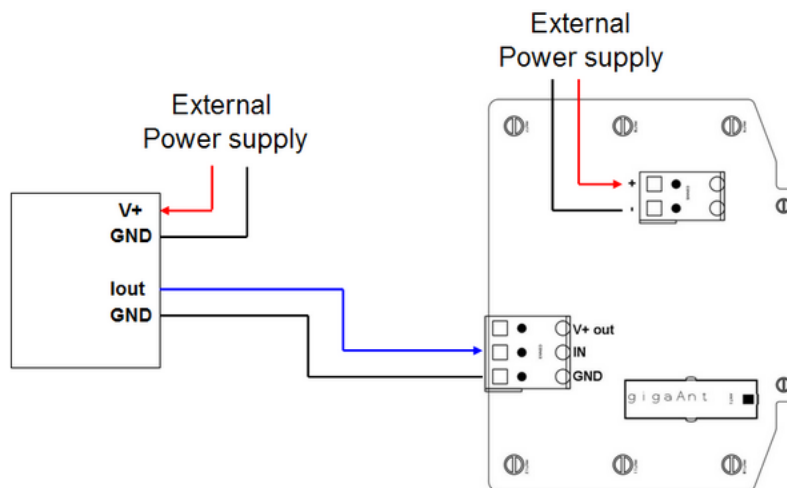


Figure 28: Connecting an externally powered probe to an externally powered WS-DLXa sensor

It is also possible to power the external probe by the WS-DLXa sensor. For this, see the figure below.



The maximum power consumption of the external probe may not exceed 100 mA.

WS-DLXa (0..24mA)

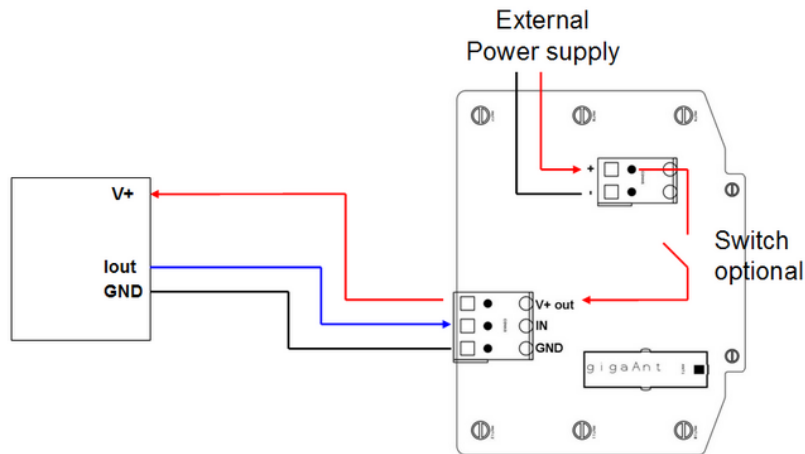


Figure 29: Powering the external probe by the WS-DLXa sensor

See the figure below to connect a 2-wire external probe without a power supply.



The maximum power consumption of the external probe may not exceed 100 mA.

DLXa (0..24mA)

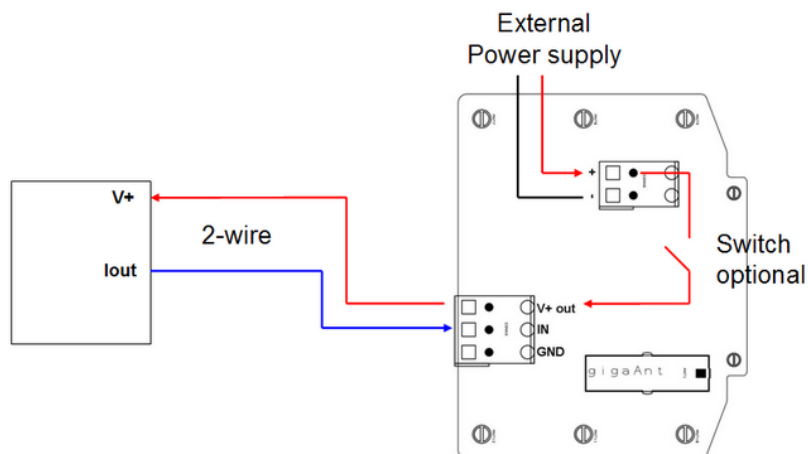


Figure 30: Connecting an external probe without a power supply to a WS-DLXa sensor

In order to save energy (in case the external power supply is a battery or an accumulator) this sensor can be supplied with a switch in the electronic circuit. Separate order codes are available in the price list (WS-DLXa-switch) Settings with respect to the switch can be found in 3.7.4.2.

Make sure the WS-DLXa sensor can deliver the required power to the external probe. Refer to the manual of the external probe and the datasheet of the WS-DLXv/s sensor to see if the power requirement can be met by the WS-DLXa sensor.

Follow the pairing procedure as described in 2.8.1.

2.6.4 Connecting to a WS-DLXc/cc/ct sensor

There are 3 types of contact sensors available:

- WS-DLXc digital sensor for switch contact signals (transmits open/close status after each sample interval)
- WS-DLXcc digital sensor for switch contact signals and status changes (transmits open/close status after each sample interval and additionally transmits status change at the moment it happens)
- WS-DLXct digital sensor for switch contact signals and % open/close time (transmits open/close status after each sample interval and % of time the status is open or closed)

All three versions can be battery powered and externally powered.



Be careful not to touch any component or part of the printed circuit board.

See the figure below to connect a battery-powered sensor.

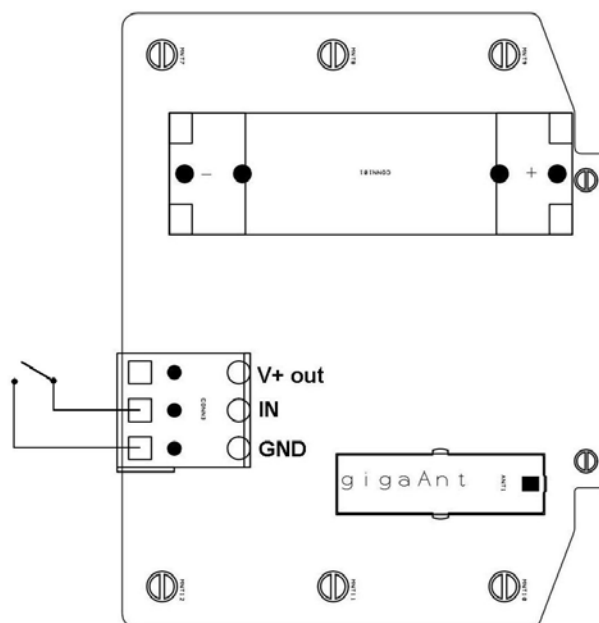


Figure 31: Connecting a battery powered WS-DLXc/ct/cc

See the figure below to connect an externally powered sensor.

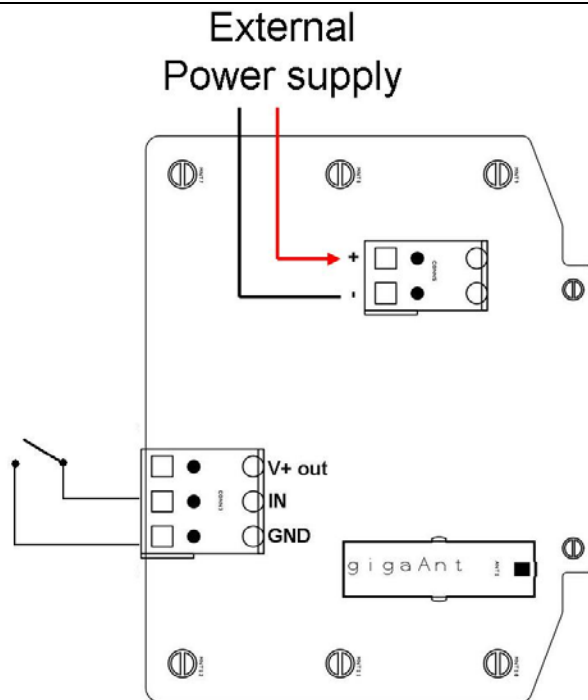


Figure 32: Connecting an externally powered WS-DLXc/ct/cc

Follow the pairing procedure as described in 2.8.1.



Do not insert a battery into the sensor yet.

2.6.5 Connecting to a WS-DLXt sensor

The WS-DLXt counts pulses and is delivered with battery. Externally powered units can be delivered as special on request.



Be careful not to touch any component or part of the printed circuit board.

See 2.6.4 for connection diagrams.



Do not insert a battery into the sensor yet.

Follow the pairing procedure as described in 2.8.1.

2.6.6 Connecting to a WS-DLXac

This sensor transmits in mV the AC current measured by the external sensor (e.g. current clamp). The sensor can be delivered battery powered or externally powered.



Be careful not to touch any component or part of the printed circuit board.

See the diagram below for connecting a battery-powered sensor.

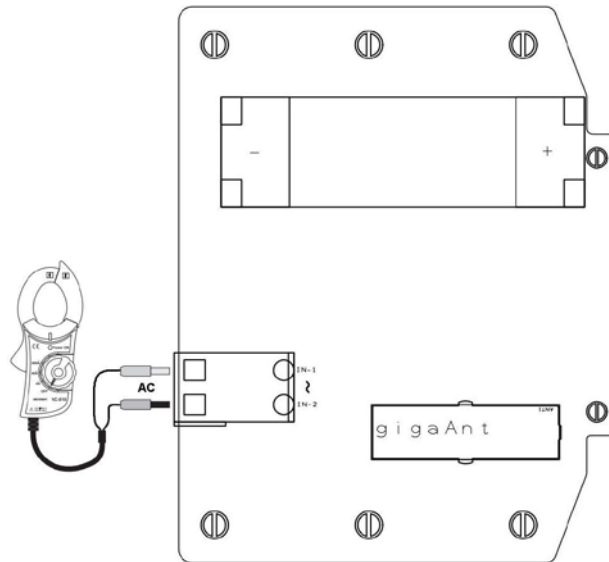


Figure 33: Connecting a battery powered WS-DLXac



Do not insert a battery into the sensor yet.

Follow the pairing procedure as described in 2.8.1.

2.7 Installing / Configuring WS-DLC sensors

No external probes can be connected to this sensor type.

Follow the pairing procedure as described in 2.8.1.

2.8 Installing / Configuring energy sensors

The energy sensor can be delivered in three versions:

- The WS-DLRs version for KWh measurement in 230V/10A systems (type F – Schuko plug as used in most of Europe).
- The WS-DLRc version for KWh measurement in 230V/10A systems (3-connector version).
- The WS-DLXp version for KWh measurement in 400 V systems

Refer to the following paragraphs for a detailed description of the different sensor types.

2.8.1 The Plug version for 230 V/10A (WS-DLRs)

The WS-DLRs is a plug type sensor and no external connection can be made. The sensor has an internal relay, which can be used for switching on/off connected equipment. Settings can be made in SensorGraph (see 3.7.4.2) and Rules can be defined in WebSensys (refer to the WebSensys manual for an explanation of Rules).



Maximum current is 10A.



Do not power up the sensor yet.

Follow the pairing procedure as described in 2.8.1.

2.8.2 The connector version for 230 V/10A (WS-DLRC)

The WS-DLRC has three connectors to connect external equipment/devices for switching on/off.

For installation of these sensors and the external equipment/devices please read the “User- /Installation manual WiSensys WS-DLRC Energy Sensor”. This document is provided with the sensor.

We strongly recommend installation is performed by a certified installation engineer.



Maximum current is 10A.



Do not power up the sensor yet.

Follow the pairing procedure as described in 2.8.1.

2.8.3 The 3-phase system 400 V/xxx A (WS-DLXp)

The WS-DLXp is the WiSensys part of a measurement set for KWh in 3-phase 400 V AC systems. This system is delivered with the following components:

- KWh meter (either mechanical version or electronic version).
- The electronic version requires current transformers, one for each phase.
- The WS-DLXp, which is a pulse counter (counting pulses generated by the KWh meter).

The KWh meter and the current transformers come with their own installation and usage manuals and can be found in the shipment package.

The WS-DLXp is battery powered and has to be connected to the external KWh meter according to the scheme below

We strongly recommend installation is performed by a certified installation engineer.



Be careful not to touch any component or part of the printed circuit board.

See the diagram below for connecting the sensor.

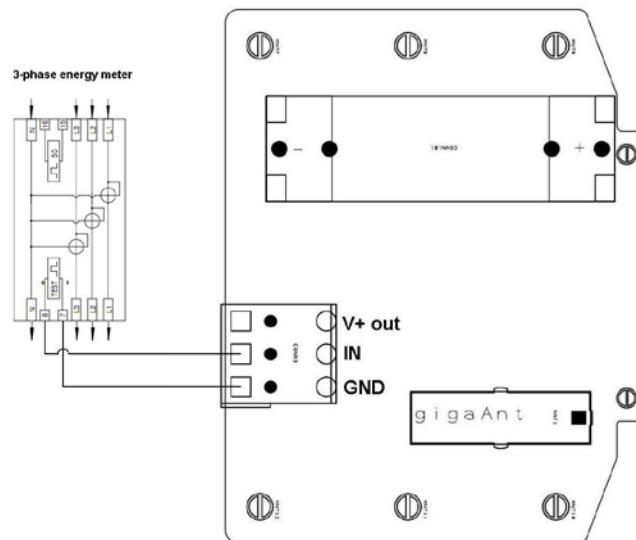


Figure 34: Connecting a WS-DLXp to a 3-phase source



Do not insert a battery into the sensor yet.

Follow the pairing procedure as described in 2.8.1.

2.9 Adding sensors to the system

When adding new sensors, make sure SensorGraph is running on the PC and the PC is connected to the base station.

A sensor needs to be added to the system (paired with the base station) before it will be operational:

- Right-click on **Sensors** in the left pane of the **Configuration** tab and select **Add new sensor...**

or

Select **Sensors** in the left pane and press the **Add new sensor...** button in the bottom left of the right pane.

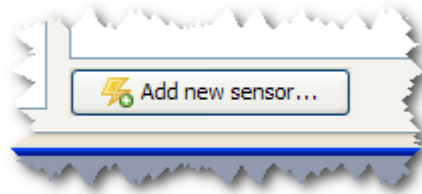


Figure 35: Add new sensor button in the Sensors item of the Configuration tab

This puts the base station in a mode where it accepts new sensors. This is done to avoid that sensors are accidentally connected to neighboring systems.

The **New sensor wizard** is started which guides you through the process.

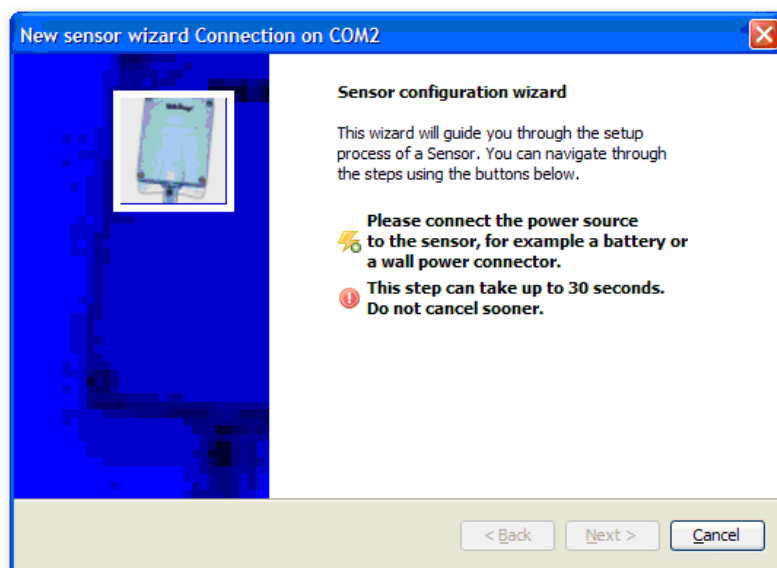


Figure 36: Start Sensor Configuration wizard

Insert a 3.6V lithium battery between the battery connectors, if the sensor is powered by a battery. If the sensor is powered externally, please plug in the power cord.



Note the orientation of the battery's positive and negative pole. Inserting the battery the wrong way can damage the battery and/or the sensor.

When a battery is inserted, the sensor starts broadcasting connection requests to all base stations that accept new sensors. When in range, the selected base station receives these request messages and then forwards them to SensorGraph. SensorGraph detects the new sensor and continues with the configuration wizard.

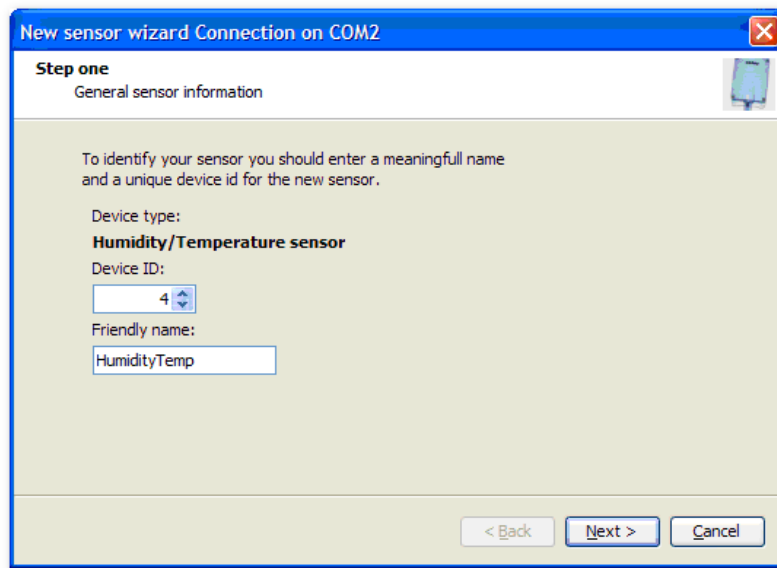


Figure 37: Proposed Device ID and Friendly Name

Default values for “Device ID” and “Friendly name” are presented. Only change the Device ID when there is an urgent reason to do this, otherwise you can accept the presented value. The friendly name is meant to give the sensor a relevant readable name e.g. “Upper shelf”, “Refrigerator 1”, “Cupboard” or any name indicating the usage of the sensor. The name can be changed later if needed.

When the base station has accepted the sensor the wizard shows the “Wizard Finished” screen.

Press **Finish** to complete the wizard. You can install another sensor by selecting **Add new sensor...** in the **Configuration** tab.

Close the cover of the sensor with the 4 screws provided.



Make sure the orientation of the cover is as show in figure 18.



Make sure the rubber seal is positioned in the cover as you found it.

If the configuration of a sensor is not successful, an error message dialog will be shown.



Make sure you remove the battery from the sensor that was supposed to be paired and leave it out of the sensor for 5 minutes before another attempt with that sensor is made. This time is required for the sensor to completely power down in order to detect that a battery is inserted again.

More sensor setting information can be found in 3.7.4.2.

2.9.1 Mounting sensors

The housing of the sensor allows for wall mounting. Performance of the sensor is optimal when the sensor is mounted vertically on a non-metal wall. The sensor can either be mounted temporarily using the horizontal opening provided. For permanent placement on a wall, four positions for screws are prepared in the housing. The remaining plastic is easily removed and screws can be inserted.



The sensor housing has IP65 qualification and can be mounted in moist areas. Do not open the housing in a moist area, as this will affect the components on the printed circuit board.

Use the SensorGraph PC program to verify that you mounted the sensor within range of the base station. If the sensor is not available in SensorGraph, make sure that the correct communication port is selected. If the sensor is still not available, reposition the sensor to place it within range of the base station or a range extender if available. If the sensor cannot be repositioned, contact your distributor for placement of more base stations, range extenders or a more sensitive external antenna on the sensor(s).

2.10 FastTX

Sensors can be equipped with FastTX functionality. This functionality enables the sensor to:

- Sample more slowly than a default maximum sample time of 250 seconds.
- Resend (intentionally) missed data a lot faster.

Some examples:

Placing sensors in trucks, measuring the temperature and humidity every 10 minutes and retrieving the data when the truck arrives at the home base.

Placing the sensors in crop fields and using a battery powered base station, which is only turned on for a small period of time. The sensors retrieve all missed data within minutes, which then can be send to WebSensys when using w WS-BU-gprs base station.

2.10.1 Example calculations

Assuming a sensor is sampling every 1 hour. It can take up to 2 minutes for the sensor to resume communication when in range again, so the two minutes are considered in the calculations also. A normal digital temperature sensor is used for calculations (WS-DLTi).

The following speeds for data retrieval can be achieved:

1 day: ~2 minutes and 18 seconds

7 days: ~3 minutes and 42 seconds

31 days: ~10 minutes

The speeds can differ for other sensor types due to different data types.

2.10.2 Enabling FastTX

FastTX can be enabled for each separate sensor. To enable FastTX, perform the following steps:

- Go to **Configuration**.
- Find the sensor you want to enable FastTX for.
- Enable the checkbox **Sample interval in minutes instead of seconds**.

The sample interval will not be in minutes instead of seconds.

- Modify the **sample interval** for the sensor accordingly.
- Press **Save** to send the new settings to the sensor.

In the screenshot below, you can see a contact sensor configured with FastTX and a sample interval of 1 hour (or 60 minutes).

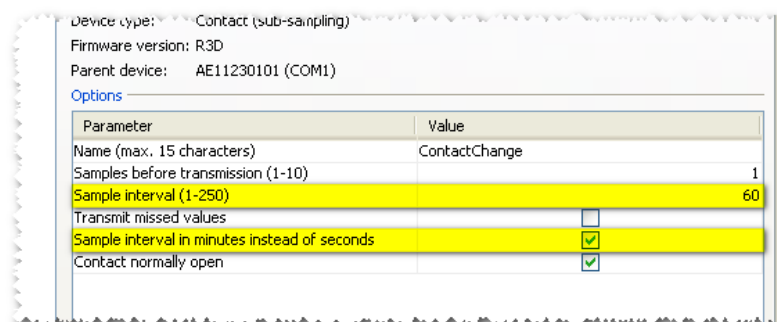


Figure 38: FastTX enabled with 1-hour sample interval



The transmit interval setting is disabled when using FastTX.



In newer sensor releases, the FastTX option is not available anymore. Faster recovery of missed values can be set separately from the sample interval.

3 Using the System

After you installed and configured the base station and the sensors, your WiSensys[®] system is ready for use. This chapter describes how you can use the SensorGraph PC software in order to use the system. SensorGraph is organized in several tabs. In this chapter, each tab is described.

Below each tab, a small status screen is displayed. Here status information of activity ongoing in SensorGraph may be displayed. The information is only displayed as long as it is useful to the user and the screen may be empty.

3.1 Graph

The application starts in the tab called **Graph**. For accurate viewing, the **Graph** tab shows small thumbnails for each type of sensor (temperature, humidity, current etc). The measurement values are added to the graph automatically and updated every 30 seconds. See figure 39.

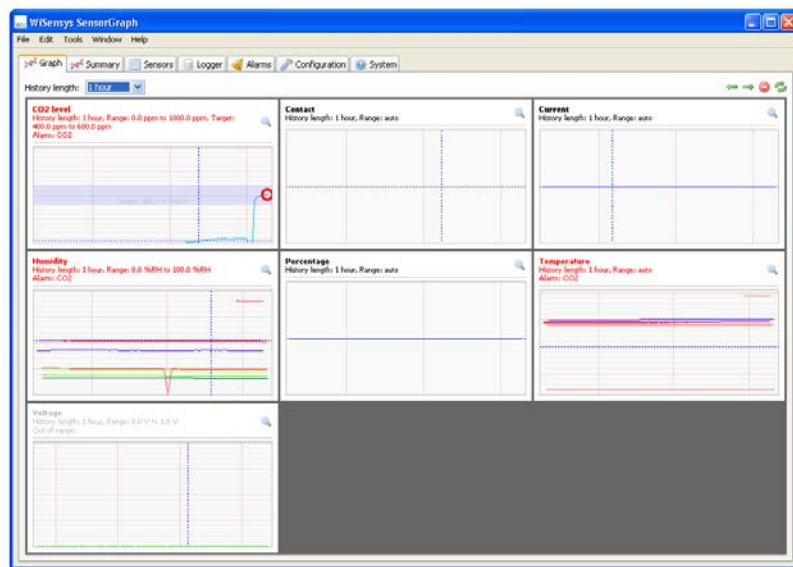


Figure 39: Graph tab with different sensor types and graphs

You can zoom each graph by clicking the zoom button (🔍) in the top-right corner of each graph (see Figure 40). When zoomed in, the axis labels are also shown. Zoomed-in graphs are updated every 5 seconds.

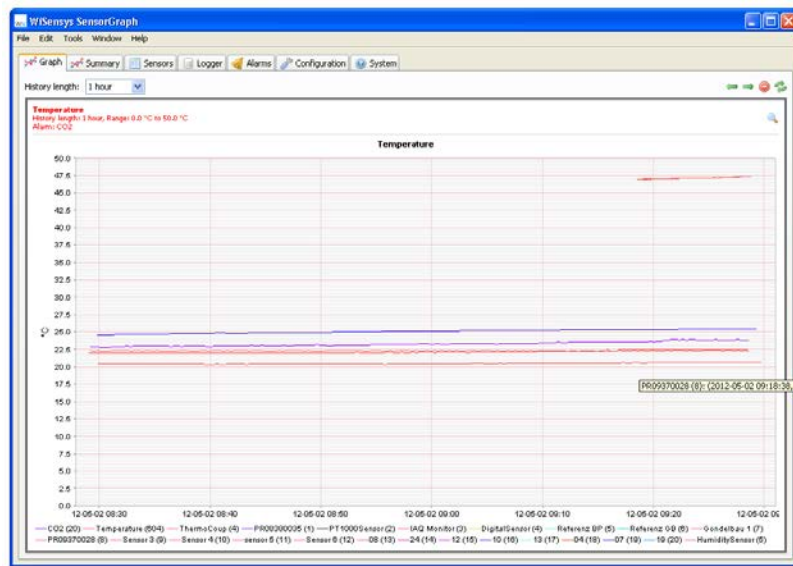


Figure 40: Zoomed in temperature graph in the Graph tab

When zoomed in, you can click the button again to zoom out.

Each graph shows information about the configuration of the graph in the top left corner.

When one or more sensors in the graph has a triggered alarm, the information string becomes red and the name of the sensor is shown in the information string (see Figure 41).

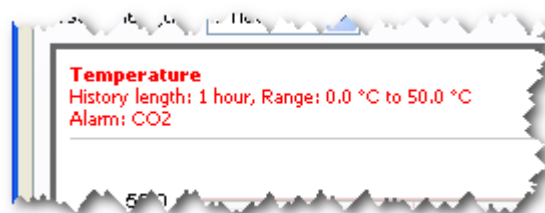






Figure 41: Information string in the top left of a graph

When one or more sensors visible in the graph go out of range, the information string becomes gray and the name of the sensor is shown in the information string.

You can automatically zoom and browse through all available graph by clicking the  and  button.

To refresh all or the zoomed in graph immediately without waiting for the application to refresh, you can press the  button.

You can clear all data from the graphs by pressing the  button. When pressing the clear button, the data is only cleared from the graphs.

3.1.1 Graphs information

The value axis displays the main function of the sensor on the left side. The time axis indicates the time of values. Available sensors can be found in the legend below the graph. These items are only visible when the showing detailed graphs by zooming in.

The maximum time period that the time axis displays is controlled by the graph properties, which can be accessed by right clicking the graph and then clicking on **Properties....**

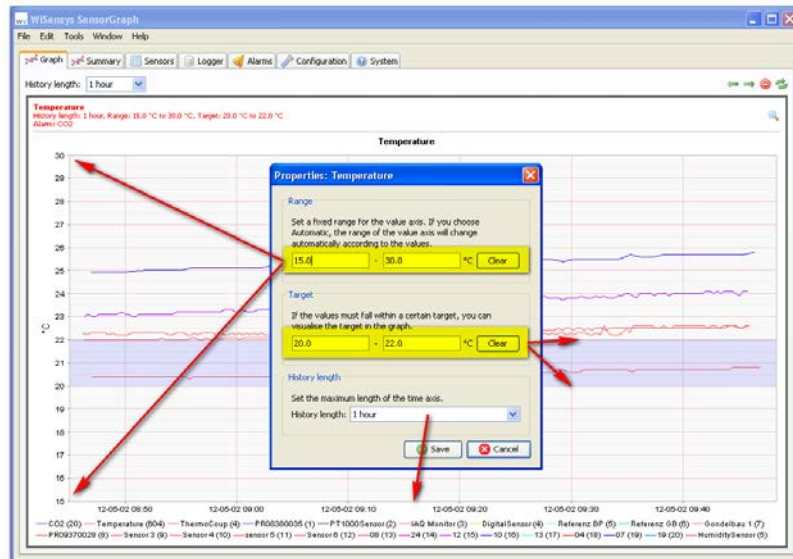


Figure 42: Graph properties dialog, showing a configured range, target and history length

The period displayed on the graph can be set by choosing a history length.



Setting a long history length is not recommended because it can cause the PC to respond slowly on older hardware.

By default, the range of the value axis will be adjusted automatically according to the measurement values. You can set the minimum and maximum value under **Range** to set a custom range.

To show a visible target in the graph, you can set the minimum and maximum **Target** values.

You can also set the history length of all graphs simultaneously by choosing a history length in the Graph panel (see Figure 43).



Figure 43: Setting history length for all graphs

3.1.2 Zoom-in, zoom-out inside the graph

You can zoom in to view sensor values in more detail by drawing a square with your mouse around the values in the graph area. Make sure you move the mouse to the right. See the screenshot below.



Figure 44: Zooming in on the graphs

Zooming out is performed by holding the left mouse button and moving the mouse pointer to the left in the graph area.

3.1.3 Saving and printing a Graph

A displayed graph can be saved or printed by a right mouse-click. Select **Save as...** to save the graph as a PNG file. Select **Print...** to send the image to a printer (see figure 45). The text of this menu is depending on Windows Regional settings.

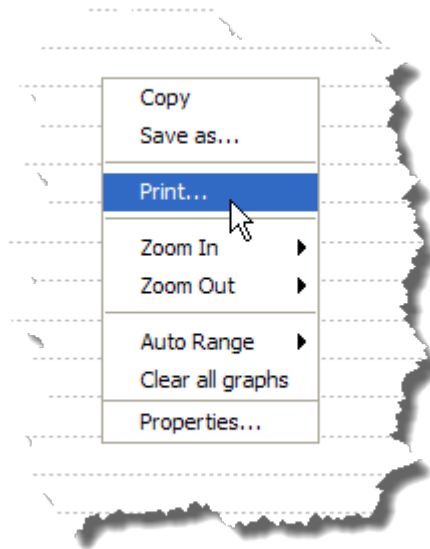


Figure 45: Save and print graph popup

3.1.4 Hairline and tool tips

A left mouse button click in the graph area displays a vertical and horizontal hairline on the value closest to the mouse pointer. This eases determining the x-axis and y-axis value for any point in the graph. If you hover the mouse pointer above a value, details of that value will popup.

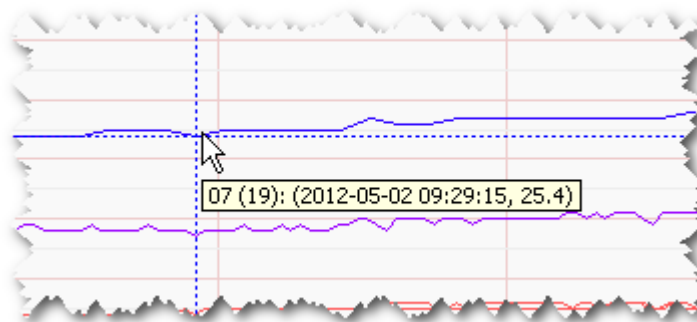


Figure 46: Hairlines on left mouse click and a tool tip visible

3.1.5 Annotations

You can hold the CTRL key on your keyboard and click a value with your mouse button. A dialog box appears where you can add an annotation or a comment about that particular value. This can be used for logging.

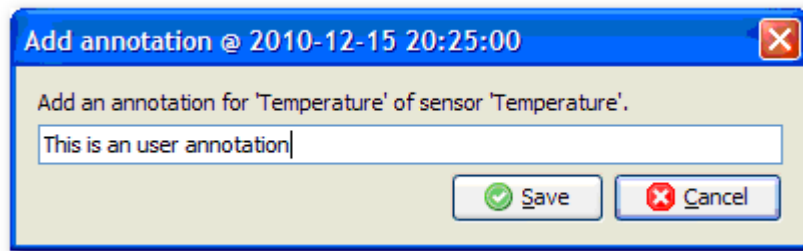


Figure 47: Adding an annotation

Any annotations added this way will be shown in historical data and can be managed in **Annotations log...** in the **Tools** menu.

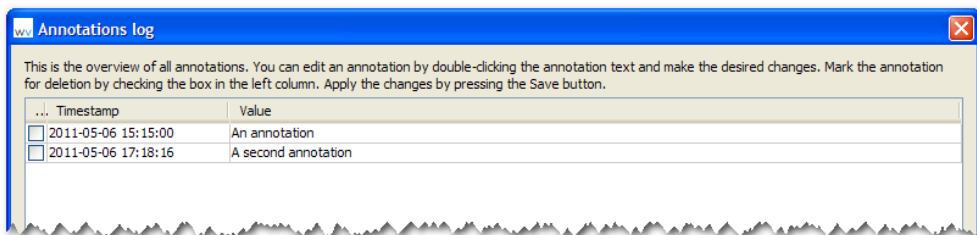


Figure 48: Annotations dialog

To remove an annotation, select the checkbox under the “Delete” columns and press **Save**.

You can change the contents of the annotation by double-clicking the text in the last column and type a new value. Again, press **Save** to apply the changes.

3.2 Summary

You can use the **Summary** screen to collect you most important sensors from you WiSensys system and show them individually in a graph.

The screen looks similar to the **Graph** screen, but shows each sensors in its own graph. In addition, each data channel is separated and placed in its own smaller graph inside the main graph block.

By default, no sensors will be visible in the summary and you should add a sensor from the **Sensors** screen by right clicking a sensor you want to add and choose **Add to summary panel** (see 3.3).

After you have added some sensors, the screen should look similar to the image below.

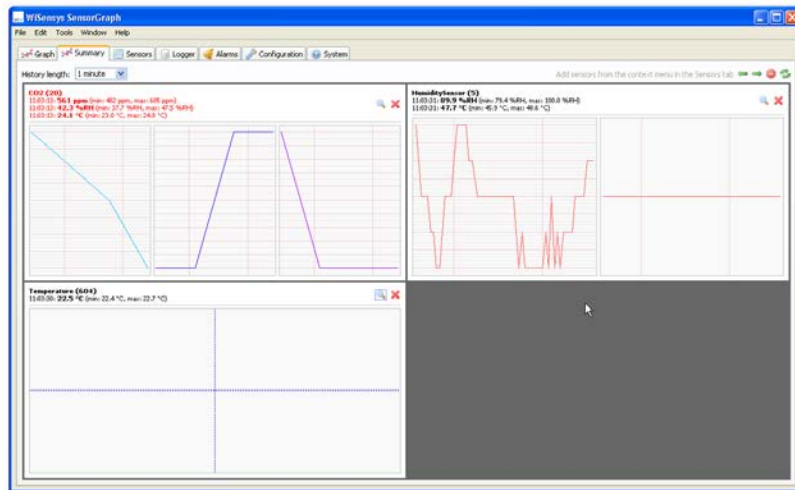


Figure 49: Summary panel with three sensors

Most controls in the **Summary** panel are similar and work the same as the controls in the **Graph** panel. Read 3.1 to find out more about the controls.

To remove a sensor from the summary, you can press the **X** button.

3.3 Sensors

On the “Sensors” tab, a table is displayed with all available sensors in the system (see figure 50) including a live view of the measurement data and other useful data.

Status	RSSI	Appear...	Base station	ID	Sensor type	Name	Data channel	Last sampl...	Last sa...	Lowest...	Lowest s...	Highest...	Highest s...
No range		<input checked="" type="checkbox"/>	PRG000120 (COM4)	2	Low Voltage	Voltage		10:08:31	498 ppm	10:07:52	482 ppm	10:08:31	498 ppm
Alarm	40	<input checked="" type="checkbox"/>	PRG000120 (COM4)	20	Carbon Dioxide	CO2	CO2 level	10:08:31	41.2 %RH	10:07:52	41.0 %RH	10:08:31	41.2 %RH
Alarm	40	<input checked="" type="checkbox"/>	PRG000120 (COM4)	20	Carbon Dioxide	CO2	Humidity	10:08:31	24.4 °C	10:08:11	24.3 °C	10:07:52	24.4 °C
		<input checked="" type="checkbox"/>	PRG000120 (COM4)	6	Contact (percentage)	ContactTime	Contact	10:08:12	0 ON/OFF	10:07:22	0 ON/OFF	10:07:22	0 ON/OFF
		<input checked="" type="checkbox"/>	PRG000120 (COM4)	6	Contact (percentage)	ContactTime	Percentage	10:08:12	0.00 %	10:07:22	0.00 %	10:07:22	0.00 %
		<input checked="" type="checkbox"/>	PRG000120 (COM4)	5	Current	Current	Current	10:08:14	-0.03 mA	10:07:53	-0.03 mA	10:07:53	-0.03 mA
		<input checked="" type="checkbox"/>	PRG000120 (COM4)	5	Humidity & Temperature	HumiditySensor	Humidity	10:08:31	86.9 %RH	10:08:22	86.8 %RH	10:07:39	87.1 %RH
		<input checked="" type="checkbox"/>	PRG000120 (COM4)	5	Humidity & Temperature	HumiditySensor	Temperature	10:08:31	48.2 °C	10:07:40	48.1 °C	10:07:39	48.2 °C
		<input checked="" type="checkbox"/>	PRG000120 (COM4)	604	Temperature	Temperature	Temperature	10:08:23	22.6 °C	10:07:49	22.6 °C	10:07:49	22.6 °C
		<input checked="" type="checkbox"/>	PRG000120 (COM4)	4	Temperature	ThermoCoup	Temperature	10:08:17	22.6 °C	10:07:57	22.6 °C	10:07:57	22.6 °C

Figure 50: Sensors tab

The table shows the following for each sensor in the system:

- **Status**
Shows the status of the sensor. The status can indicate that the sensor is in alarm, has a flat battery or is out of range.
- **RSSI**
Shows an indication of how well the base station is receiving the sensor messages. Values above 30 can be considered adequate. When a sensor is out of range, no RSSI value is shown.
- **Visible in graphs**
Indicates if the data channel of the sensor should be visible in the real-time graphs or not.
- **Appearance in graphs**
The appearance of a data channel of the sensor in the real-time, history and report graphs.
- **Base station**
The base station the sensor is connected to.
- **ID**
The internal ID of the sensor.
- **Sensor name**
The name of the sensor.
- **Sensor type**
The sensor type.
- **Channel**
The data channel name or the name of a custom equation if configured. More than one data channel per sensor are possible for some sensor types.

- **Last sample**
The value of the newest measurement.
- **Last sample timestamp**
The timestamp of the newest measurement.
- **Lowest sample**
The value of the lowest measurement.
- **Lowest sample timestamp**
The timestamp of the lowest measurement.
- **Highest sample**
The value of the highest measurement.
- **Highest sample timestamp**
The timestamp of the highest measurement.
- **Information** (*hidden by default*)
Detailed information about the sensor. This can be useful for technicians to monitor the sensors.

A right mouse-click anywhere in the table gives the possibility to set all sensors to visible or invisible.

The measurements under “Last sample”, “Lowest sample” and “Highest sample”, their corresponding timestamp columns and the “Information” column are cleared when the button **Clear** is pressed.

You can also hide columns, which you do not want to see by clicking the table properties button in the top right corner of the table.

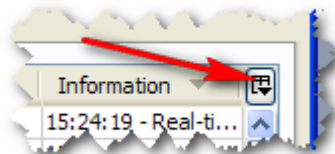


Figure 51: The table properties button

3.4 Logger

The **Logger** tab contains the functionality to retrieve previously stored data from the database and export it to another file formats or graphs, similarly as on the **Graph** tab. The logger in SensorGraph is always active and saves every received value to the database.

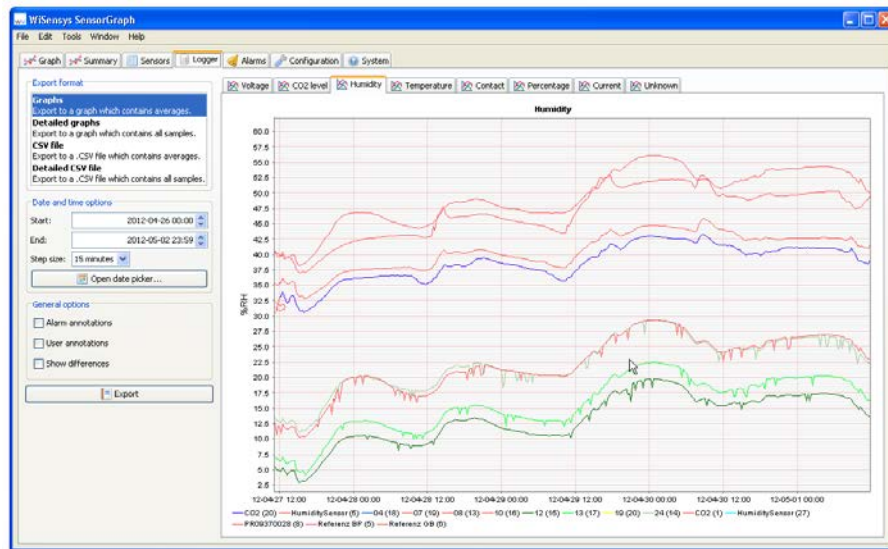


Figure 52: Logger tab

The location of the database is set by the **Log directory** value in the settings dialog (see 3.8.2).



Do not modify the database structure or data by hand. This can result in data corruption. Access the database only in read-only mode when using third party tools.

3.4.1 Durability of data

SensorGraph stores all the measured value in a database. The database engine that is used for storage by default is Apache Derby. This is a very mature, durable and high performance database engine.



To prevent losing data it is recommended to create regular backups of the database. This can be done by copying the database file to a save location when SensorGraph is not running.



It is recommended to disable write caching for the hard disk that contains the database files. This prevents losing data in case of power or hardware failures.

Disabling the write cache is done in the **Device manager**. Go to the device manager and find the disk the database is stored on, then go to the **Properties** of that disk:

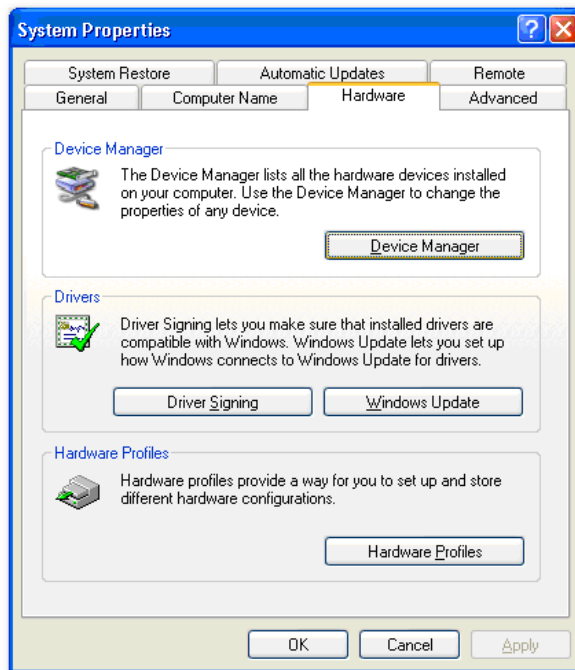


Figure 53: Control Panel -> System

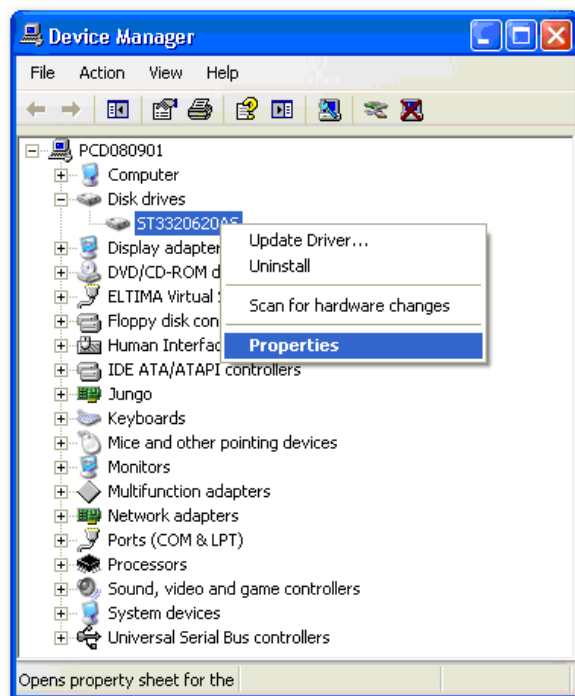


Figure 54: The Device Manager with the selected disk

In the **Policies** tab, you can disable the write caching:

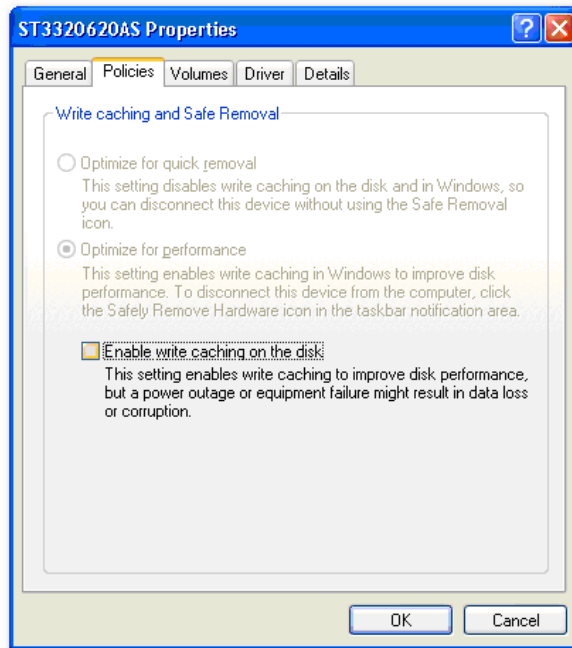


Figure 55: The Policies tab

3.4.2 Load Log from disk

Previously stored measurement values can be retrieved for reviewing on the **Logger** tab. Do the following to view historical data:

- Select the type of export you want to create under **Export type**. By default, graphs are created. The following export types are available:
 - **Graphs**: shows graphs with averages calculated using the selected step size. This is the default and recommended choice.
 - **Detailed graphs**: shows graphs with all data points. The maximum number of points shown is limited.



Generating detailed graphs uses a big amount system resources because of the large amount of data displayed. Please note that loading and showing the graphs can become very slow on older PC's when many samples have to be displayed.

- **CSV file**: comma separated files containing data from the selected sensors in tabular form. Each data channel is written to a separate column in the file. Step size is used to calculate average values in that step size.
- **Detailed CSV file**: comma separated files containing all data from the selected sensors. The file contains also additional data

like alarm flags and sequence numbers.



These files will become very large very quickly. Therefore, if you open them in a spreadsheet program, you will run against limitations of row count.

You should use these files mainly by feeding them to other tools, specifically designed to handle large comma separated files.

- Select the date and time from which you want to start searching for data and the date and time data to end the search. You can change the start-end time and the interval values faster by pressing the **Open date picker** button.
- You can also change the resolution of the graph by changing the **Step size**. The default step size is 15 minutes; this means that a data point will be drawn every 15 minutes. If you want to see energy usage per hour for example, you should choose an interval of 1 hour.
- In the **General options**, you can choose what data should be displayed in the log.
 - By enabling **Alarm annotations**, little circles are displayed in the graphs to indicate an alarm at that point in time.
 - By enabling **User annotations**, user annotations will be displayed in the graphs also.
 - By enabling **Show differences**, every point in the graphs will be annotated with a readable difference between the point and the previous point.

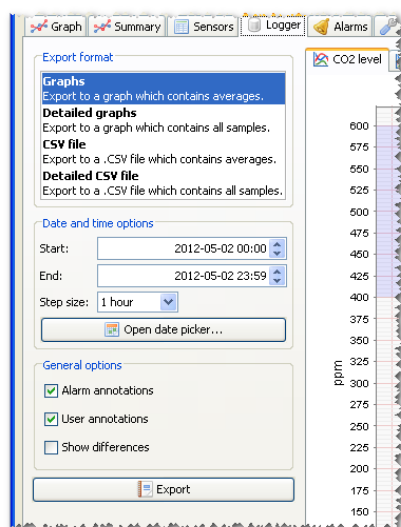


Figure 56: Logger options

After pressing the **Export** button, you will be asked to choose which sensors you want to include in the export (see Figure 57). You select or deselect multiple sensors by clicking the sensors in the list while holding the CTRL-key on your keyboard.

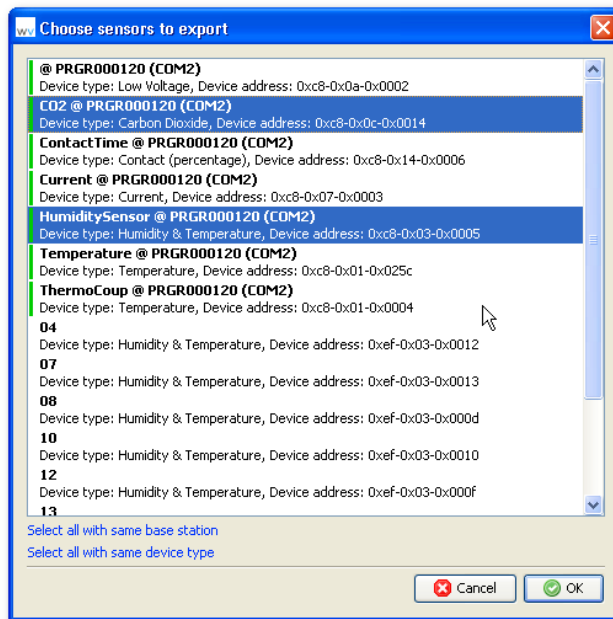


Figure 57: Choosing the sensors to export

After pressing **OK**, the export will be created.

3.4.3 User annotations

Just like in real-time graphs, you can add annotations by holding the CTRL key and clicking on a value.

3.4.4 Synchronization manager

The **Synchronization manager...** (in the **Tools** menu) can be used when the base station contains a RS485 or Ethernet I/O board with a MMC/SD card. The data on the memory can be used as backup for when SensorGraph is not running.

The SD card can either be in the base station connected to the PC, in a dedicated SD card reader, or files on any other media like a hard disk.

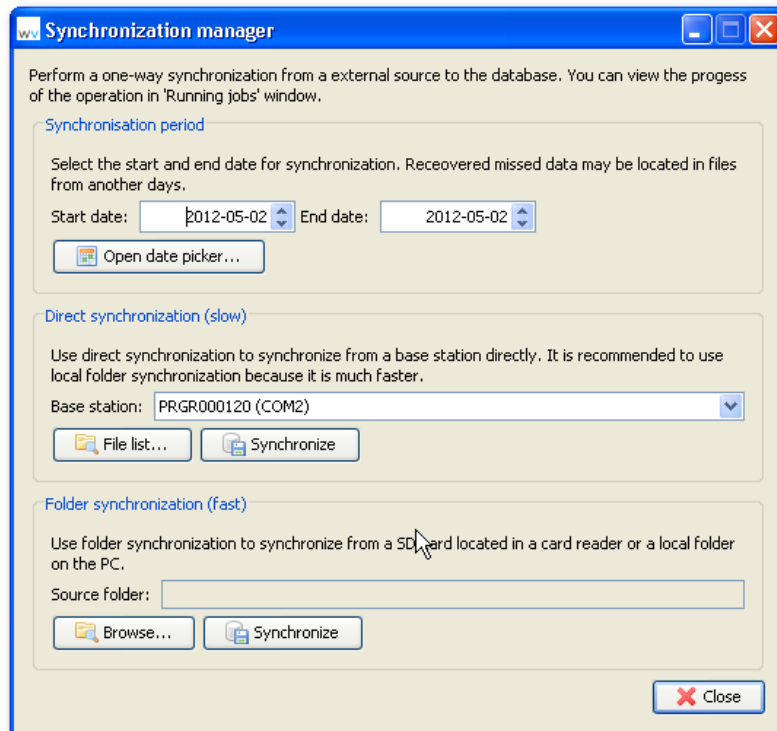


Figure 58: Select a source for synchronization

When the SD card is inside the base station, transfer of data between the SD card and SensorGraph is done at a rate of maximum 20 sensor transmissions per second. Estimated transfer duration of 1 day of stored data can be calculated as follows:

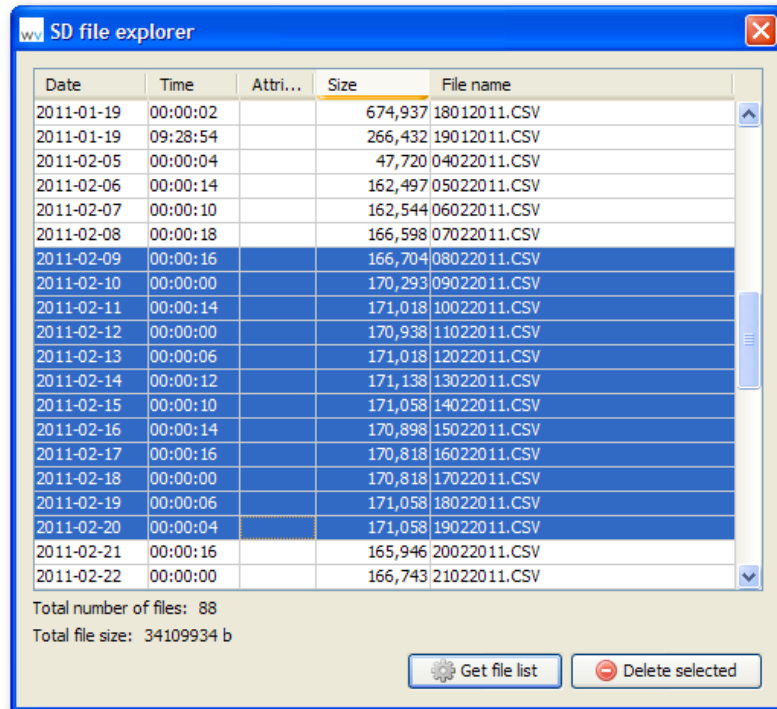
- 20 sensors, sensors sample every 200 seconds: ~7 minutes
- 20 sensors, sensors sample every 60 seconds: ~24 minutes

This duration can be decreased by increasing the “Samples before transmission” value for the sensors (see 3.7.4.2). The sensor collects a number of samples and sends them in one transmission to the base station. The overhead in logging files is less and transfer duration can be reduced by 70%.

When the SD card is inside the base station, data can be removed from the SD card using the **Clear SD** menu item that can be found in the **Configuration** tab when selecting the I/O board in the system overview.

The maximum number of days of stored data on the SD card is 512.

In addition, a file list can be accessed by pressing the **List files...** button. There, the files can be removed individually.



Date	Time	Attri...	Size	File name
2011-01-19	00:00:02		674,937	18012011.CSV
2011-01-19	09:28:54		266,432	19012011.CSV
2011-02-05	00:00:04		47,720	04022011.CSV
2011-02-06	00:00:14		162,497	05022011.CSV
2011-02-07	00:00:10		162,544	06022011.CSV
2011-02-08	00:00:18		166,598	07022011.CSV
2011-02-09	00:00:16		166,704	08022011.CSV
2011-02-10	00:00:00		170,293	09022011.CSV
2011-02-11	00:00:14		171,018	10022011.CSV
2011-02-12	00:00:00		170,938	11022011.CSV
2011-02-13	00:00:06		171,018	12022011.CSV
2011-02-14	00:00:12		171,138	13022011.CSV
2011-02-15	00:00:10		171,058	14022011.CSV
2011-02-16	00:00:14		170,898	15022011.CSV
2011-02-17	00:00:16		170,818	16022011.CSV
2011-02-18	00:00:00		170,818	17022011.CSV
2011-02-19	00:00:06		171,058	18022011.CSV
2011-02-20	00:00:04		171,058	19022011.CSV
2011-02-21	00:00:16		165,946	20022011.CSV
2011-02-22	00:00:00		166,743	21022011.CSV

Total number of files: 88
Total file size: 34109934 b

Get file list Delete selected

Figure 59: File list

To start the synchronization, press the correct **Start** button.

3.5 Alarms

SensorGraph supports generating alarms based on measurement data received from sensors. Two types of alarms are implemented in the WiSensys system:

- Built-in alarms generated by the sensors, which can also trigger the alarm relay on certain types of base stations. Only a limited number of this type of alarms per sensor is possible.
- User-defined alarms generated by SensorGraph, which do not trigger the alarm relay on certain types of base stations. An unlimited number of this type of alarms can be created for each sensor.

Each alarm is identified by a name and is triggered when the received measurement value is below, above or equal to a configured trigger value. When an alarm condition is met, an action can be generated. This action can be any or a combination of the following:

- send an email.
- send an SMS to a mobile phone.
- show a popup window.
- show an annotation in the graphs.

- toggle the alarm relay on base stations supporting it (not configurable by user, but supported only for built-in sensor alarms).
- control up to three external relays if available on the system (USB-relay switch needed).

Sending an email or SMS depends on settings in the **Settings** dialog, see 3.8.4 and 3.8.5.

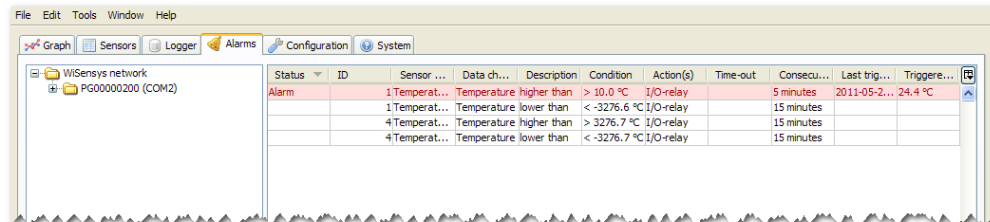


Figure 60: Alarms tab

In the **Alarms** tab, you can monitor and edit all available alarms. Some sensors support built-in alarms and so it is possible that there will be alarms present already even on a new system.

You can click on any device in the left tree to show alarms only for this device. If you click on a base station for example, you will see all alarms from sensors on that base station. If you click on a sensor, you will see all alarms for that sensor

In the table on the right, you can see the status of all alarms. The following columns are available:

- **Status**
shows the status for this alarm (red means triggered)
- **ID**
the sensor ID
- **Sensor name**
The sensor name
- **Data channel**
the data channel this alarm works for
- **Description**
The description of the alarm
- **Condition**
shows on what condition the alarm is triggered
- **Action(s)**
indicates which actions are enabled for this alarm (built-in alarms will always have the I/O-board enabled, user created alarms do not support this)
- **Delay**
shows after how much time the actions will be performed for the first time

- **Consecutive delay**
indicates after how much time the action will be performed after the first time, if the alarms is still triggered
- **Last triggered on**
Shows the timestamp of the moment the last trigger action
- **Last triggered value**
Shows the value the alarm is currently triggered with (this updates every new value for as long as the alarm is triggered)
- **Triggered on value**
The value on which the alarm was triggered

The alarms in the table are sorted according to their status. Triggered alarms are shown first. You can change the sorting by clicking on one of the columns.

3.5.1 Adjusting alarms

Double click on any alarm in the alarms table to edit the alarm. The alarm edit dialog will appear. You can also press the **Edit selection...** button at the bottom of the panel.

Figure 61: Edit alarm dialog

If the alarm is a built-in sensor alarm, some input fields will be disabled because their values are built-in and cannot be changed.

Press **Save** to save the alarm. Press **Cancel** if you do not want to make any changes to an alarm. Only user created alarms can be removed by pressing the **Remove** button.

3.5.2 Define new alarm

You can create a new alarm by selecting the data channel of the sensor for which you want to create the alarm in the left tree, then pressing the **New alarm...** button. The new alarm dialog appears where you can define your alarm.

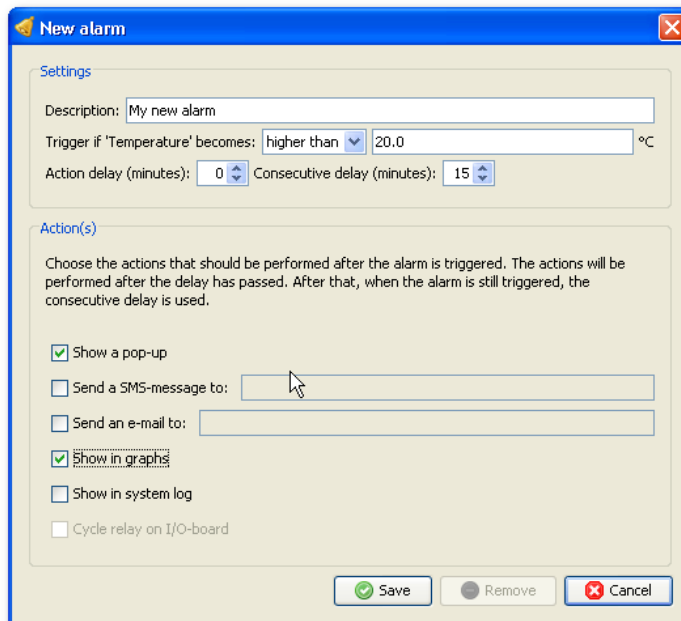


Figure 62: New alarm dialog

You will not be able to create a new alarm before you selected a correct data channel in the tree on the left side of the panel.

3.5.3 Removing an alarm

Double-click on the alarm in the table and then press the **Remove** button. You can effectively disable a built-in alarm by assigning it a trigger value, which in practice will never be reached.

3.6 Graphs and equations

The **Graphs and equations** dialog provides the functionality to translate measurement values from all sensor types into customer specific units not supported by SensorGraph. Examples include replacing 4-20mA and 0-10V by units for flow, pressure and others. The “Graphs and equations” dialog also allows translation of °Celsius to °Fahrenheit for example.

By creating multiple graphs for the same type of sensor, grouping is possible. The dialog is accessible from the main menu under **Tools**.

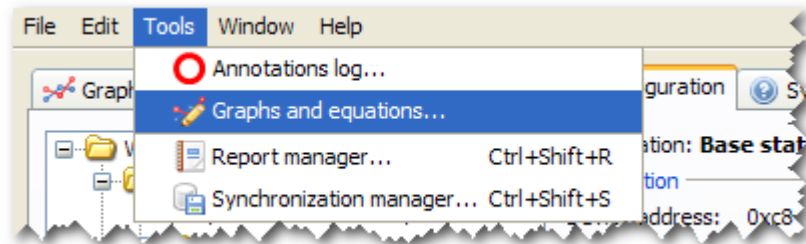


Figure 63: Accessing the graphs and equations dialog

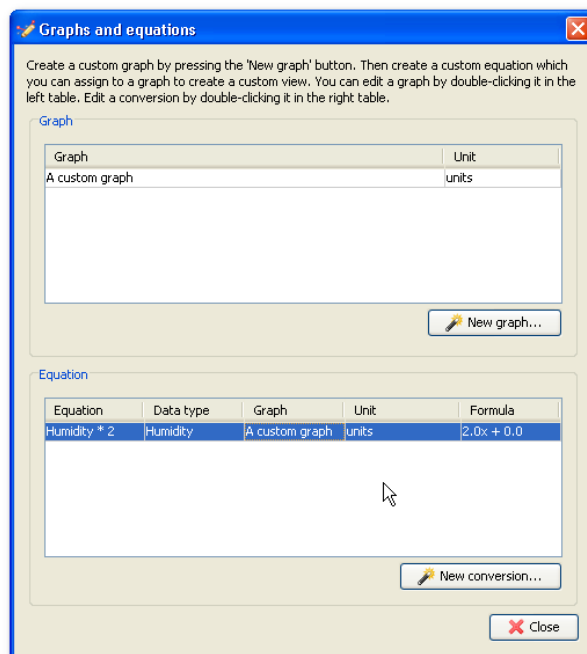


Figure 64: Graphs and equations dialog

3.6.1 Define a new graph

In the “Graphs and equations” dialog, press the **New graph...** button to create a new graph. A dialog will appear:

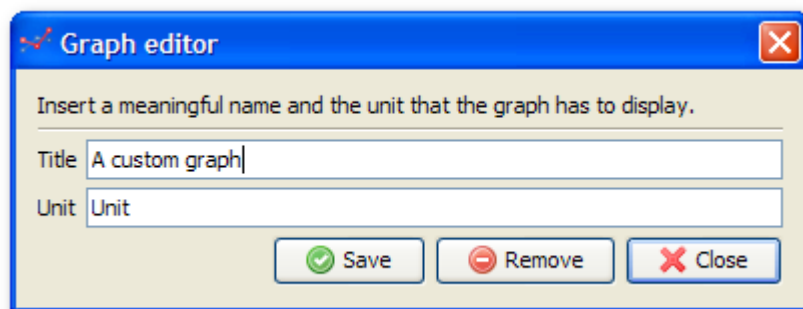


Figure 65: Graph dialog

Enter a title for the new graph and the unit to display on the y-axis. Press **Save** to store the graph created in the list. You can now continue to create an equation that uses the newly created graph.

You can remove a graph by double-clicking it in the graph table and then pressing the **Remove** button.

3.6.2 Define a new equation

In the **Graphs and equations** dialog, press the **New equation...** button to create a new equation. A dialog will appear:

Figure 66: Equation dialog

- Enter a descriptive name to identify the equation. This makes it easier for you to identify the equation when assigning the equation to sensors.
- Choose a data type for which the equation will be valid. This can only be changed when creating a new equation.
- Select the graph in which the data should be visible. You can select either your own graph created in the previous paragraph or a built-in graph.
- Enter two input and the corresponding output values to configure the equation. For example: to convert Temperature in Celsius to temperature Fahrenheit you can enter the following values:

Input/Output 1:	0	→	32
Input/Output 2:	10	→	50

This means: 0 °C equals 32 °F and 10 °C equals 50 °F. This will generate a formula, which is then used to calculate the values.

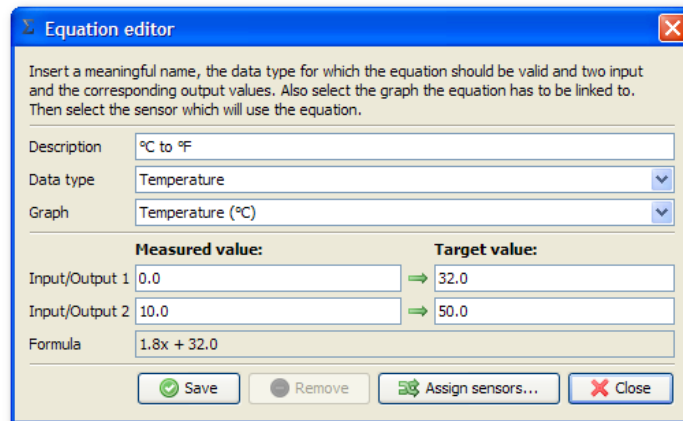


Figure 67: Celsius to Fahrenheit

- Press the **Save** button to save the equation or **Assign sensors...** to save the equation and assign sensors to it.

You can remove an existing equation by pressing the **Remove** button.

After that, you can assign the equation to sensors by double-clicking the equation in the “Graphs and equations” dialog box and pressing the **Assign sensors...** button.

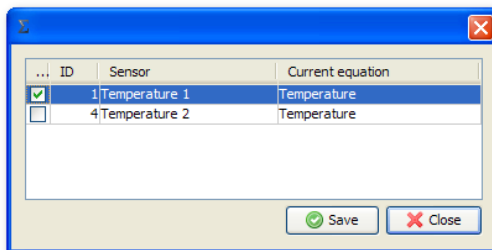


Figure 68: Assign sensors dialog

In the **Assign sensors** dialog you can choose which sensors should use your custom equation. It is possible that not all of your sensors are visible in the table. The sensors must provide the data type you chose in the equation editor dialog.

As soon as SensorGraph receives a measurement for sensors assigned to the custom equations, converted values will be visible in the new graphs.

3.7 Configuration

The **Configuration** tab shows the structure of the WiSensys network and allows changes to be made. Changes include adding base stations, range extenders and sensors, removing base stations, range extenders and sensors and changing settings. Here you can also set parameters for the I/O Board, if present in your system.

Select the level you want to view by clicking on the level name in the left pane of the **Configuration** tab.

3.7.1 Network level

A right-click with the mouse on WiSensys network shows the context menu for the Network level. With **Add new serial host device...** and **Add new TCP/IP host device...**, an additional base station can be added to the system. **Add new serial host device...** can also be used to add a range extender for initial configuration. Make sure you have the base station or range extender connected to a COM port on your PC, or connected to the local network before adding one of them to the system.

You can also create a full system report by choosing **Export full system status...** from the context menu. This can be useful while receiving support.

A system with two base stations is shown in the structure in the left pane (see figure 69). Sensors can only be added to a specific base station on sensors level (see 3.7.3).

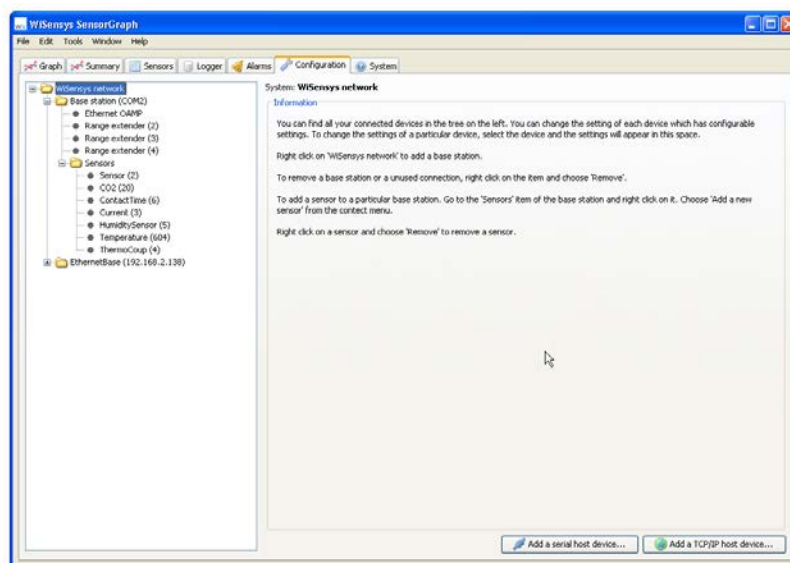


Figure 69: WiSensys network with two base stations

See 3.7.2 for more information about base stations.

Click the right mouse button to show the context menu:

- **Add a serial host device...**
Opens a dialog box where you can add a new base station or range extender connected to a serial port on the PC.
- **Add a TCP/IP host device...**
Opens a dialog box where you can add a new base station with a Ethernet I/O board, located in your local network or somewhere on the Internet. This works only with a **WS-BU-ethernet-01** base station.
- **Export full system status...**
When you have problems using the WiSensys system. A support engineer

can ask you to export a full system status. With this option, the most important aspects of you system will be exported to a text file, which can be useful for diagnosing problems.

3.7.2 Base station level

The base station level shows technical information about the base station including software revisions, settings and number of sensors. See figure 70 for an example.

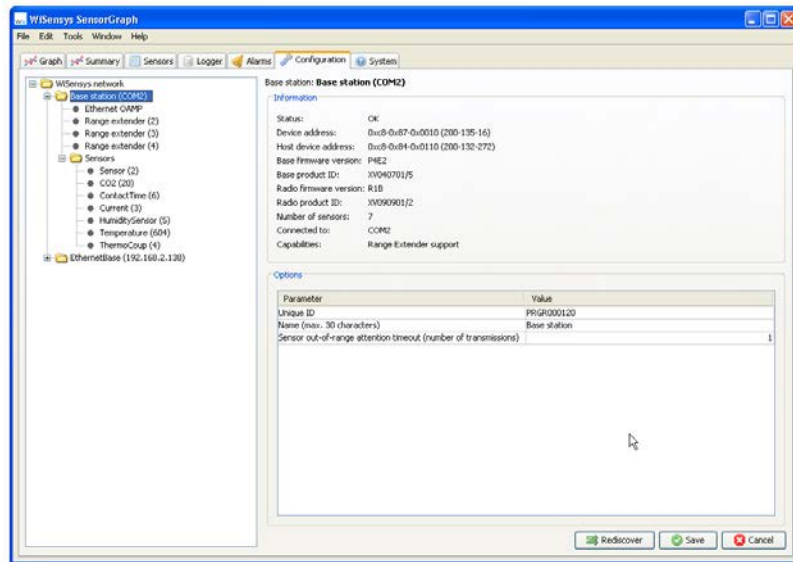


Figure 70: Base station settings

To review or change the parameter settings of a base station, select the base station in the left pane. The parameters are listed in the right pane (see Figure 70: Base station settings). Select the parameter to change in the Values column and enter the new value. Press the **Save** button to apply the new value or **Cancel** to reload the current values.

To be able to change settings, remove sensors and other administrative tasks, you will need to login to the base station as Administrator.



Choose “Change user mode...” to do that. In the popup dialog that appears, you can choose Administrator as the user and input your password (default empty).

After that, all administrative options will be available to you.

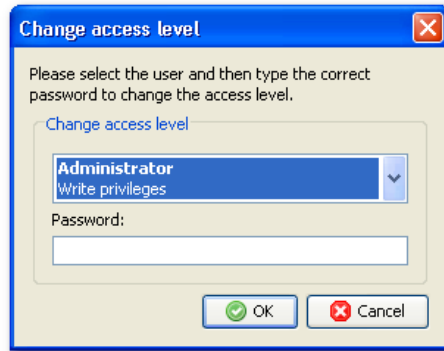


Figure 71: Login as Administrator

You can change the default administrative password to something else by selecting the **Change administrator password...** option.

See Appendix D for the explanation of the different settings.

Click the right mouse button on a base station to show a context menu for that base station. The following options are available:

- **Remove**
Removes the base station from SensorGraph.
- **Rediscover**
Rediscover all settings and sensors from the selected base station or range extender.
- **Reset to factory defaults...**
Resets the base station to factory defaults.



ALL DATA WILL BE LOST DURING THIS PROCESS.



The process of resetting can take up to a few minutes. You will be notified when the process finishes.

- **Change user mode...**
Changes the user mode (Administrator or User).
- **Change administrator password...**
Changes the administrator password (by default the password is empty).
- **Reset administrator password...**
Resets the administrator password (some base stations may not support this).
- **Show sensor states...**
Retrieves extended sensor information from the base station (only base stations with range extender functionality support this).

- **Show events...**
Shows events from the base station, which can help diagnose problems.
- **Show radio events...**
Shows events from the base station specifically to the radio functionality.
- **Show statistics...**
Shows statistics from the base station, which can help diagnose problems.
- **Show radio statistics...**
Shows statistics from the base station specifically to the radio functionality.
- **Backup...**
Opens the backup dialog where a backup can be created of the base station configuration.
- **Restore complete configuration (incl. unique ID)...**
Restores the complete configuration of the base station, I/O board and sensors. This can be used when creating an exact copy of an old base station or after a factory reset.
- **Restore complete configuration...**
Restores the complete configuration of the base station, I/O board and sensors. This can be used when restoring configuration into a different base station.
- **Restore sensors...**
Only restores the sensors and their configuration. This is useful for new base stations with a different I/O board.

3.7.3 Range Extender level

3.7.3.1 Range extender information / settings

The range extender level shows technical information about the range extender and its settings. See Figure 72: Range extender connected to a serial port for an example.

To review or change the parameter settings of a range extender, select the range extender in the left pane. The parameters are listed in the right pane (see the figure below).

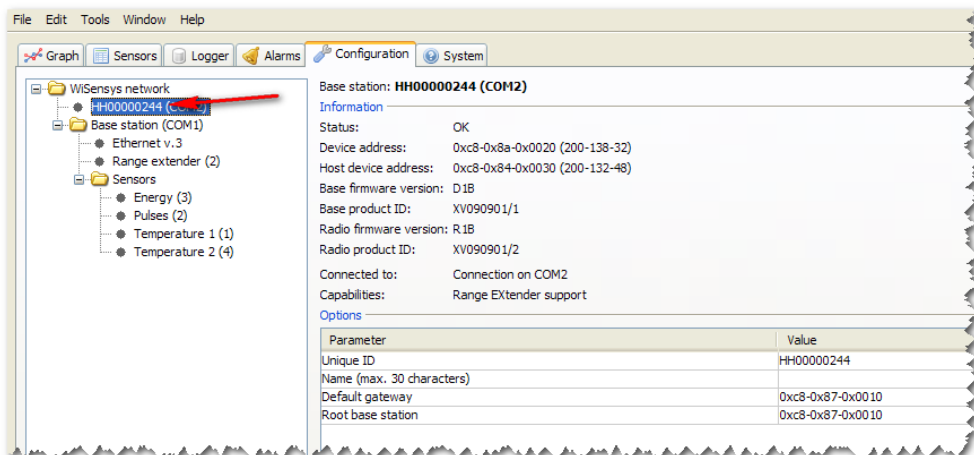


Figure 72: Range extender connected to a serial port

Select the parameter to change in the Values column and enter the new value. Press the **Save** button to apply the new value or **Cancel** to reload the current values.

3.7.3.2 Removing a range extender

To remove a range extender from the system, right click the range extender in the left pane and select **Remove** from the context menu. If you remove a range extender from the system, the range extender will still try to communicate with its gateway, but the gateway will no longer respond to it. This will cause the just removed range extender to no longer receive sensor data messages, so all sensors connected to the range extender will try to find a new range extender/base station to communicate to.

If other range extenders are using the just removed range extender to communicate to the base station, they will no longer be able to communicate to the base station and there for no longer receive sensor messages. There for it is very important to be extremely careful when removing a range extender.

3.7.4 Sensors level

With the menu item **Add new sensor...** or the button in the right panel, a new sensor can be added to the base station. This is described in 2.8.1. See figure 73.

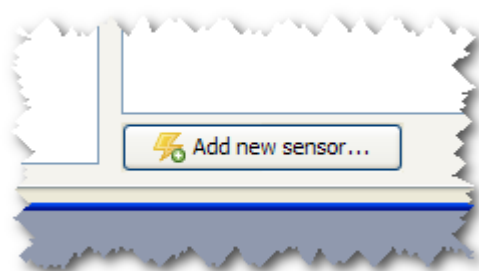


Figure 73: Add sensor button

3.7.4.1 Shared sensor parameters

If you choose the Sensors node in the tree, two tables will appear. In the right table, you will see settings shared by the sensors (not all of them) and in the left table all sensors in the system. By changing a value of a setting in the right table, you can change the setting for all sensors to the same value supporting the setting.

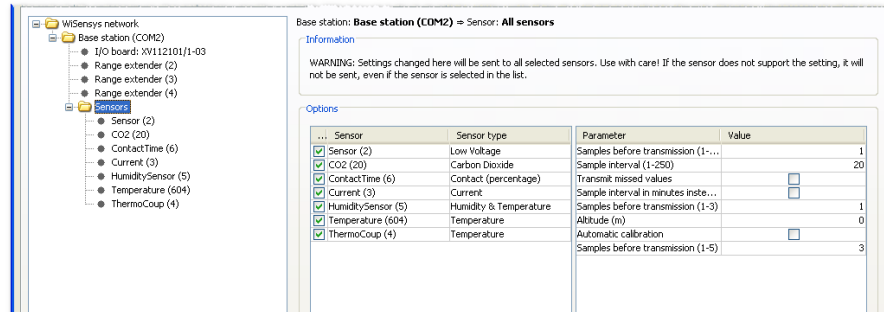


Figure 74: Shared sensor settings

3.7.4.2 Sensor parameters

To review or change the parameter settings of a sensor, select the sensor in the left pane. The parameters are listed in the right pane.

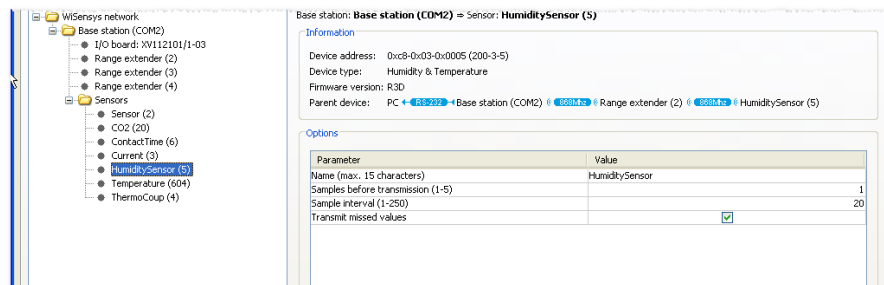


Figure 75: Sensor parameters

To remove a sensor from the system, right-click the sensor in the left pane and select **Remove** from the context menu. If you remove the sensor, it will only be removed from the base station but the sensor will still send data. To save battery power, remove the battery from the sensor to stop the sensor from sending completely.

See Appendix .1.1.1Appendix C to see all available settings for the sensors.

By looking at the Parent device, you can determine where the sensor is sending its values. This can be useful when installing range extenders.

3.7.4.3 Sensor calibration

You can calibrate sensor that supports it by right clicking on the sensor in the left pane and choosing **Calibrate sensors....** The calibration dialog will pop up.

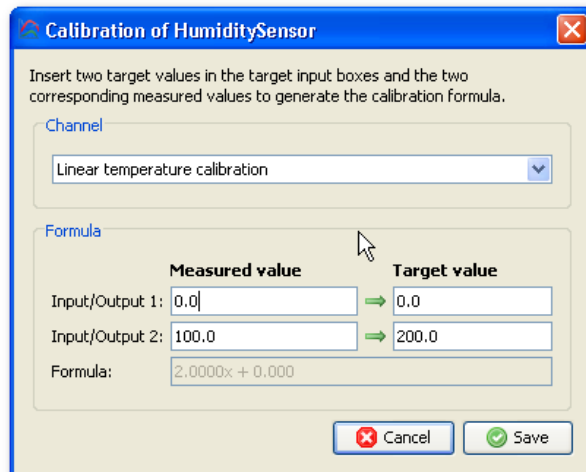


Figure 76: Sensor calibration dialog

You can correct the value the sensor is measuring by giving two measurement values and the two corresponding target values. This will generate a formula, which is used by the sensor internally to correct the measurement.

Press **Save** to commit the changes and wait for the corrected measurements to be sent for verification.



Be careful, calibration will alter the sensor measurements.



Note that sometimes values can change after input because of number rounding and precision of the sensor.

3.7.5 I/O Board level

3.7.5.1 RS485 I/O Board

To review or change the parameter settings of the RS485 module, select the I/O Board in the left pane. The parameters are listed in the right panel.

See .1.1.1.1Appendix E for a list of possible parameters.

Clicking the right mouse button on the I/O board shows the context menu for that board. The following options are available:

- **Retrieve time**
Shows the current time on the I/O board
- **Synchronize time**
Synchronizes the time on the I/O board with the PC time
- **Eject SD**
Closes all SD card operations so it is ready for removal
- **Clear SD**
Clears all data on the SD card

- **Show events...**
Shows all events from the I/O board (this can be useful for diagnosing problems)
- **Show statistics...**
Shows all statistics from the I/O board (this can be useful for diagnosing problems)



If an error message is displayed after pressing Clear SD, the I/O Board may be unable to remove directories from the card. Check the SD card using a card reader connected to the PC.



The SD card can only hold a maximum of 512 files in the file allocation table. This means the card will only hold 512 days maximum.



Do not write to the SD card using a card reader with a PC. Some operating systems use long file names that take more than one sector in the file allocation table. This could lead to the card being able to hold much less than 512 days of data.

3.7.5.2 Analog I/O Board

To review or change the parameter settings of the Analog I/O Board, select the I/O Board in the left pane. The parameters are listed in the right panel.

See .1.1.1.1Appendix E for a list of possible parameters.

Clicking the right mouse button on the I/O board shows the context menu for that board. The following options are available:

- **Show events...**
Shows all events from the I/O board (this can be useful for diagnosing problems)
- **Show statistics...**
Shows all statistics from the I/O board (this can be useful for diagnosing problems)

3.7.5.2.1 Analog channel settings

To review or change the parameter settings of the Analog I/O Board's channels, select the Analog channel in the left pane. The parameters are listed in the right pane (see figure 77).

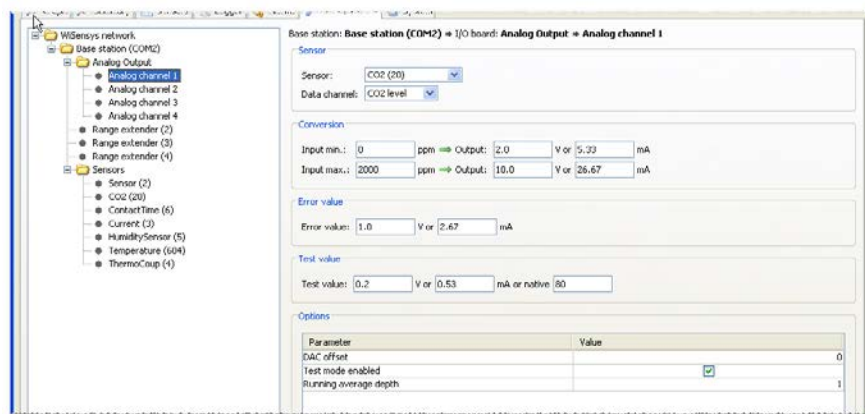


Figure 77: Analog channel configuration

See .1.1.1Appendix E for a list of parameters that can be changed.

There is no context menu available for analog channels. All configuration is done in the configuration panel itself.

Other settings for an Analog channel:

- **Sensor**
the sensor options
 - **Sensor**
the sensor from which data will be used by the I/O board
 - **Data channel**
the data channel which will be used by the I/O board
- **Conversion**
converts the measurement unit of the sensor to an analog signal
 - **Input min/max**
the measurement range to map
 - **Output**
value in V or mA corresponding to input min and input max (between 0-10V, 4-26mA or 0-4000 DAC value)
- **Test value**
V, mA or DAC value used as output level when test mode is enabled (between 0-10V, 4-26mA or 0-4000 DAC value)
- **Error value**
value in V or mA used to signal an error situation to the connected device. This setting is not for alarms but only to indicate an error. The error value is also set when the sensor is out of range and **Sensor out of range** setting is **1 or greater** in the base station configuration.

3.7.5.3 Ethernet I/O Board

To review or change the parameter settings of the Ethernet I/O Board, select the I/O Board in the left panel. The parameters are listed in the right panel.

See .1.1.1Appendix E for a list of possible parameters.

Clicking the right mouse button on the I/O board shows the context menu for that board. The following options are available:

- **Retrieve time**
Shows the current time on the I/O board
- **Synchronize time**
Synchronizes the time on the I/O board with the PC time
- **Eject SD**
Closes all SD card operations so it is ready for removal
- **Clear SD**
Clears all data on the SD card
- **Show events...**
Shows all events from the I/O board (this can be useful for diagnosing problems)
- **Show statistics...**
Shows all statistics from the I/O board (this can be useful for diagnosing problems)



If an error message is displayed after pressing Clear SD, the I/O Board may be unable to remove directories from the card. Check the SD card using a card reader connected to the PC.



The SD card can only hold a maximum of 512 files in the file allocation table. This means the card will only hold 512 days maximum.



Do not write to the SD card using a card reader with a PC. Some operating systems use long file names that take more than one sector in the file allocation table. This could lead to the card being able to hold much less than 512 days of data.

3.7.5.4 GPRS I/O Board

To review or change the parameter settings of the GPRS I/O Board, select the I/O Board in the left panel. The parameters are listed in the right panel.

See .1.1.1.1Appendix E for a list of possible parameters.

Clicking the right mouse button on the I/O board shows the context menu for that board. The following options are available:

- **Retrieve time**
Shows the current time on the I/O board
- **Synchronize time**
Synchronizes the time on the I/O board with the PC time

- **Reset GPRS modem**
In case of any GPRS connection problems, you can reset the GPRS modem manually
- **Show events...**
Shows all events from the I/O board (this can be useful for diagnosing problems)
- **Show statistics...**
Shows all statistics from the I/O board (this can be useful for diagnosing problems)

3.8 Settings

In the Settings dialog, you can adjust the different SensorGraph settings. Access the Settings dialog in the main menu under **Edit**.

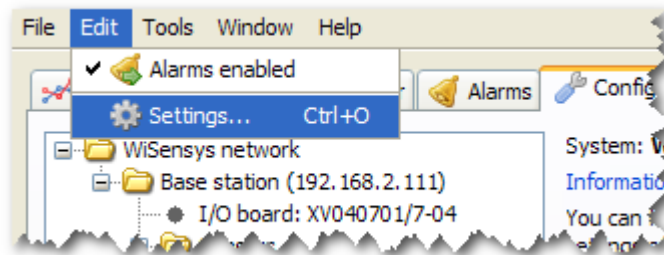


Figure 78: Accessing the settings

3.8.1 General

In the General tab, you can adjust general settings for SensorGraph.

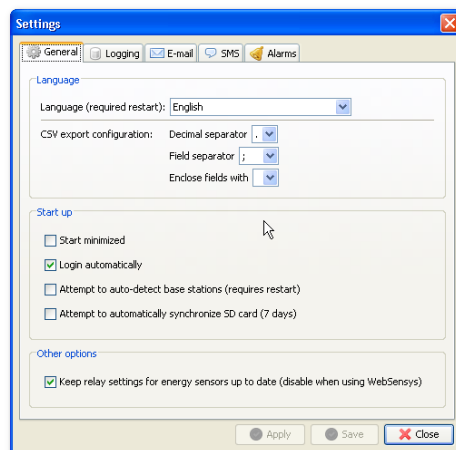


Figure 79: General settings

3.8.1.1 Start up

The settings in the Startup section control how SensorGraph behaves on startup.

By selecting the **Start minimized**, SensorGraph will start minimized. SensorGraph will remember window position and location when started the next time. This is also valid for the SensorGraph is maximized.

Enabling the **Login automatically** option will tell the software to try to login as Administrator to base stations on discovery when starting up. This is enabled by default. Disable the option if you are using multiple SensorGraph installations at different locations.

To auto-detect base station on start, you can enable the **Attempt to auto-detect base stations** setting. SensorGraph will search all serial ports for WiSensys devices and add them automatically.



Enabling auto-detection of base stations can be risky when other devices are connected to the PC on a serial port.

If this is the case, the devices can behave unexpectedly when SensorGraph is polling for WiSensys devices.

It is recommended not to enable this option in that case.

By **enabling Attempt to automatically synchronize SD card**, the system will try to synchronize the last 7 days from the SD card so you will not have to do it manually when SensorGraph was not running for a maximum of seven days.

3.8.1.2 Other settings

Here you can adjust other settings that do not fit into other categories.

Disable the **Keep relay settings for energy sensors up to date** when using rules in WebSensys and you want to run SensorGraph at the same time. This prevents SensorGraph from sending conflicting commands to the sensors. Currently, this has only effect on energy sensors equipped with one or more relays.

3.8.2 Logging

In the Logging tab, you can configure where SensorGraph should store the measurement data and how to connect to the database.

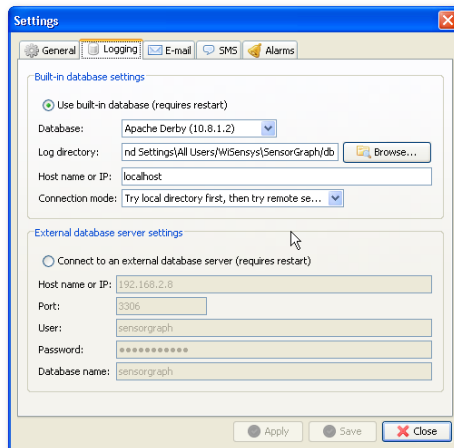


Figure 80: Data logging settings

Log directory specifies the full path to the database. You always have to specify the local path to the database, even if you are connecting to a remote machine. In that case, specify the full path on the remote machine.

Host name or IP specifies the hostname to a remote server if you use one. This can also be the IP address or hostname to a PC where another SensorGraph is running.

By choosing the **Connection mode**, you can specify how SensorGraph should connect to the database. By choosing the option **Try local directory first, then try remote server**, SensorGraph will first try to connect on the local directory but if the database is already in use by another instance of SensorGraph, it will try to connect to the remote server. If you only want to connect to a remote server, you need to select the **Only try remote server** option.

You can also use an external database. PostgreSQL is supported by default.

It is not recommended to change the Database type when using built-in database.

The default option is to use Apache Derby as database. This is a widely used and reliable database.

If you wish, you can also select a different type of database engine when you application would work better with, but this is at your own risk.

3.8.2.1 Logging from multiple SensorGraph instances

We recommend that each installed SensorGraph instance is configured with its own database. This will prevent database inconsistencies.

However, it is possible to load sensor measurement from one database into multiple SensorGraph instances running on different PC's. To prevent double data being inserted into the database, you can configure one SensorGraph installation to communicate with the base station(s), while the other SensorGraph installations do not have any base stations configured. When you

configure the same database for all the SensorGraph installation, you will still be able to read logged data from all SensorGraph, while only the SensorGraph with a configured base station will log the data.

When using a WS-BSU-Ethernet-01, you can connect up to four (one serial and three TCP/IP connections) SensorGraph instances to one base station. To prevent double data, it is recommend that you let only one instance of SensorGraph log to a database and start the other instances of SensorGraph in read-only mode. You can find an icon for read-only mode in SensorGraph start menu folder.

If you want to use database and let multiple instances of SensorGraph installations write to it, you have to consider that it can be possible that the same measurement values can be saved in the database multiple times. Make sure the clocks of the PC's running all the SensorGraph are set to the same time and time zone.

3.8.3 Alarms

Here you can choose in which way you want to be informed of general alarms: pop-up message, e-mail or SMS. The e-mail and SMS are sent to the address specified.

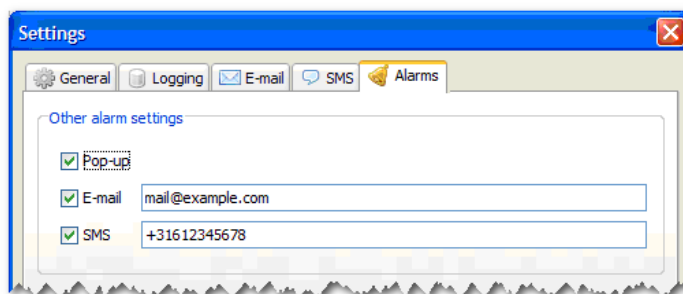


Figure 81: The alarms tab

The general alarm currently defined is when SensorGraph cannot communicate with a connected base station or a sensor anymore.

Information entered here will also be used as default settings for new alarms. With this, you can avoid having to enter the same e-mail address or mobile number for every new alarm defined.

The e-mail address and mobile number entered are also used in the test settings for E-mail and SMS (see 3.8.4 and 3.8.5). If you press **Save** at the bottom of the page, the values entered here are used as destinations for test e-mail and SMS.

You can temporarily disable all alarms by disabling the **All alarms enabled** option from the main menu.



Figure 82: Temporarily enable or disable all alarms

3.8.4 E-mail settings

To be able to send e-mail when an alarm condition is met (see also section 3.5), you must enter a valid SMTP server in the **SMTP server** field. This usually is the outgoing mail server of your internet provider. You should also enter a valid e-mail address in the **From e-mail address** field. This address is shown as the originating address in the resulting alarm e-mail.

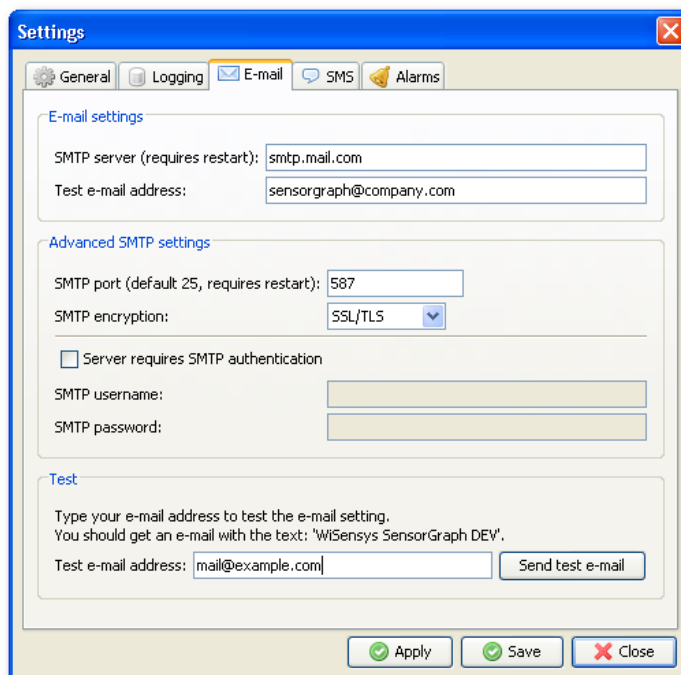


Figure 83: The e-mail tab

You can also configure SMTP authentication options if needed.

If you need **SMTP encryption**, choose the desired setting (SSL, TLS or SSL/TLS). Make sure the selected setting is supported by your SMTP provider.

To test the e-mail function, enter the destination address in the **Test e-mail address** field and press **Send test e-mail**. If the e-mail settings are correct, you will receive an e-mail with the application title and version. The address is not stored when you press the **Save** button at the bottom of the page.

3.8.5 SMS settings

To be able to send an SMS from SensorGraph, your PC must be connected to a device that can send SMS messages, e.g. a mobile phone or SMS gateway. Select the communication port to your SMS device from the list called “SMS COM Port”. You can also choose the correct communication speed to your SMS device here.

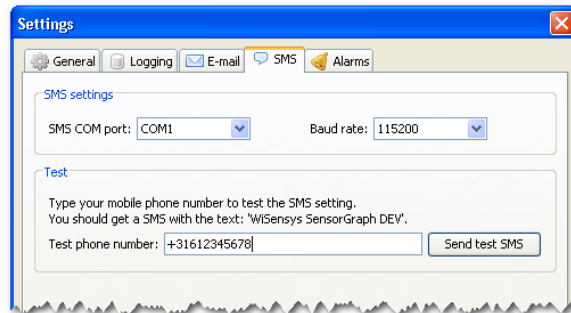


Figure 84: The SMS tab

You can test you settings by providing a telephone number in the **Test phone number** field and clicking the **Send test SMS** button.



It is not recommended to use a modem connected using a USB to RS232 converter. In some cases, this can freeze the system completely and a full hard reset of the PC will be required.

The recommended way to connect the modem is by using a real serial port or the real USB interface of the modem.

3.9 Reports

SensorGraph can automatically generate reports. Reports can be created and managed by selecting **Report manager...** in the under **Tools** from the main menu.

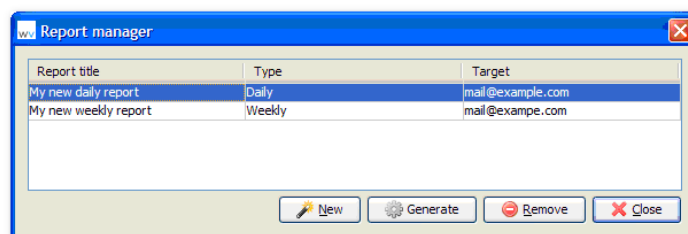


Figure 85: Report manager dialog

To create a new automatic report, press the **New** button. To remove a report, select it from the list and press the **Remove** button.

You can generate each report at any time by selecting it from the list in the report manager and pressing the **Generate** button. Keep in mind that this action may take a long time to complete.

To edit a report, double-click it in the table.

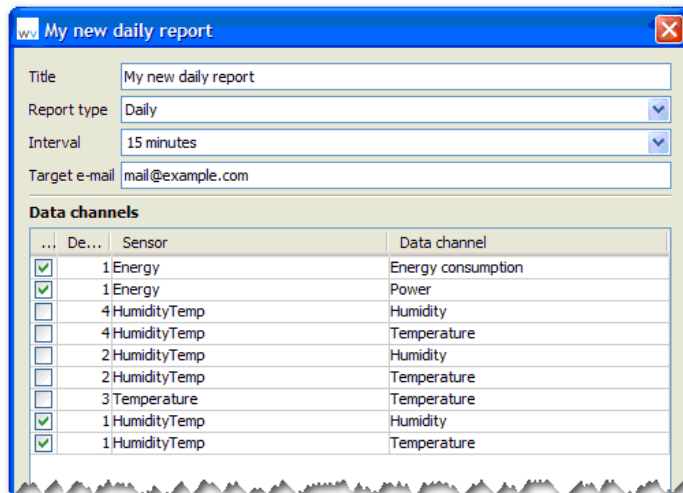


Figure 86: Report edit dialog

In the report editor, you can set the following configuration parameters:

- **Title**
the title of the report (visible on the title page of the report)
- **Report type**
indicates how often the report should be created:
 - **Daily**
the report will be created on a daily basis
 - **Weekly**
the report will be created on each Monday (SensorGraph must run on the moment the report should be generated)
 - **Monthly**
the report will be created on each first day of the month (SensorGraph must run on the moment the report should be generated)
- **Interval**
The step size in the report tables (similar to the step size you choose in the **Logger**)
- **Target e-mail**
E-mail addresses to which the reports should be sent after they are generated (separate addresses by ';' to allow for more recipients)
- **Data channels**
data channels that should be included in the report

Press **Save** to save the report configurations or **Cancel** to discard any changes.

Reports are saved in the PDF file format. You need a PDF file reader to be able to open the files.

4 Warranty

4.1 Provisions for free repair

If a WiSensys product does not work properly despite the fact that it has been treated in accordance with this manual, the product shall be repaired free of charge within the warranty period. In order to be able to use this, the product shall be returned to the manufacturer via the distributor. The distributor will contact the manufacturer and the product will be collected and shipped to the manufacturer. Whether the product will be repaired or replaced depends upon the fault and the solution.

Free repair is not available in the following situations even though it is within the warranty period:

1. The problem was caused by careless operation, natural disaster, fire, pollution or use of a power source other than specified.
2. If repair, adjustment, disassembly or modification of the product has been done by a person other than an authorized engineer.
3. Damage was caused by transportation or dropping the product after the purchase.

The warranty cannot be reissued.

4.2 Inquiries

Wireless Value BV
Waanderweg 30a
7812 HZ EMMEN
The Netherlands

Tel.: +31 591 633 200

Fax: +31 591 631 197

Appendix A Spare parts and accessories

The following replaceable parts are used in the system. Make sure you replace them with the correct product.

Product	Identification
3.6V Lithium battery	WS-Acc-Bat
Antenna for extra range	WS-Acc-Ant-Ext
Cable for WS-Acc-Ant-Ext	WS-Acc-Ant-Cab
Power adapter EU	WS-Acc-Adp-Eu
Power adapter UK	WS-Acc-Adp-UK
Replacement antenna	WS-Acc-Ant

SensorGraph has been tested with the following SMS devices.

Manufacturer	Identification
Sierra Wireless	Fastrack Xtend series (former Wavecom Fastrack Supreme modems, recommended)
Wavecom	Fastrack Supreme

Appendix B LED signaling

The WiSensys hardware is equipped with LED's. Below is a description of their location, naming and meaning.

Base station – Baseboard

- Status
 - Continuous Orange: OK, up and running
 - Continuous Green during startup: initialization
 - Continuous off during startup: initialization ready
 - Blinking Red-Green after startup: startup failure
 - Flashing Red: not configured
 - Flashing Green: base in pairing mode
- Radio link (Base board next to antenna)
 - Continuous Orange: OK, up and running
 - Flashing Red, 1 second interval: not configured
 - Flashing Green at startup: initialize radio
 - Flashing Red, fast: startup failure

Base station – I/O board

- Status (All)
 - Continuous Orange: OK, up and running
 - Flashing Red, 1 second interval: not configured
 - Flashing Orange, 10-second interval: critical error. Open the event log in SensorGraph to check the cause. You will also be notified if running SensorGraph.
- Link (Ethernet I/O Board)
 - Continuous Orange: OK, up and running
 - Flashing Red, 1 second interval: Ethernet not configured
 - Flashing Red, 2 second interval: no connection to the network
 - Continuous Red: IP configuration through DHCP ongoing
- SD-card (Ethernet I/O Board)
 - Off: no SD card inserted or SD card ejected
 - Continuous Orange: OK, up and running
 - Continuous Green: SD card inserted and initialization ongoing
 - Continuous Red: SD card OK but write protected

- Flashing Red, 1-second interval: critical error. Open the event log in SensorGraph to check the cause

Sensor

- Flashing Green, pairing mode; maximum 20 flashes. Followed by:
 - Off: found base in pairing mode. Pairing process ongoing
 - Orange: resume normal operation
 - Flashing Red, 10 times: sensor not paired. Sensor will go in deep sleep mode. Sensor must be paired for normal operation.
- Continuous Red: calibration error; check battery
- Alternating Red/Green: WS-DLR communication error. Contact distributor/supplier
- Alternating Red/Orange: memory error. Contact distributor/supplier

WS-DLCc - CO2/relative humidity/temperature sensor

- The LED can be configured to signal a certain CO2 value using the colors green, yellow/orange and red (see 3.7.4.2).

Appendix C Sensor settings

List of all available sensor settings and their definitions. The different sensors will also have different settings.

Sensor setting name	Description
Friendly name	<p>This is a meaningful name for the sensor, which appears in the graphs and logs.</p> <p><i>Max. 15 characters</i></p>
Sample interval	<p>Determines how often a sample is taken in seconds.</p> <p><i>1 – 250.</i></p>
Samples before transmission	<p>Determines after how many taken samples, the data will be transmitted to the base station. All taken samples will be transmitted.</p> <p><i>1 – 3 for CO2 sensors</i></p> <p><i>1 – 5 for humidity/temperature sensors and energy sensors</i></p> <p><i>1 – 10 for all other sensors</i></p>
Transmit missed values	<p>Retransmits samples that could not be sent earlier because of a communication problem between the sensor and the base station.</p> <p>See Appendix H for a better explanation of this setting.</p>
Minimum ... level	<p>The lower bound of the sensor alarm. If the measured sample falls below this value, an alarm will be triggered.</p>
Maximum ... level	<p>The upper bound of the sensor alarm. If the measured sample rises above this value, an alarm will be triggered.</p>
Low calibration level	<p>The low calibration level.</p>
High calibration level	<p>The high calibration level.</p>

Gain calibration	The gain calibration.
High calibration scale value	The high calibration scale value.
Energize switch ...	Energizes a switch. If the switch is closed when not energized, the switch will be effectively turned off. If the switch is open when not energized, the switch will be effectively turned on.
Sample interval in minutes instead of seconds	If enabled, the sample interval will be in minutes instead of seconds and the transmit interval setting will be disabled. This also enabled faster transmitting of missed data (up to 100 values per minute).
Running average depth	Determines how many previous values to use for the running average depth calculation. <i>0 - 5</i>
Thermo couple type	The type of the connected thermo couple sensor.
Use ABC logic	Turns on or off ABC logic (auto-calibration of CO2 sensors).
Linear ... calibration	A calibration formula. <i>$Ax + B$ (for example $1.09x + 1.08$)</i>
Joules per pulse	The joules per pulse settings depend on the energy sensor that is connected to the pulse sensor. This setting can be found in the manual of the energy sensor.
Measurement scale	The measurement range of a WS-DLXm sensor.

Appendix D Base station settings

The list of all available base stations settings and their meanings. Different models of base stations can have different settings.

Settings shown in *italic* cannot be changed.

Setting name	Description
Friendly name	A meaningful name of a base station, which appears throughout the system. <i>Max. 15 characters</i>
<i>Unique ID</i>	<i>A unique identification for the base station.</i>
Sensor out of range time out	Determines after how many missed samples the sensor will be marked as "out of range". <i>0 – 6 (0 = off)</i>
Password for administrator access	The password you have to use to change the user mode to administrator, which in turn enables you to perform administrative tasks.

Appendix E I/O board settings

Each I/O board in the WiSensys range can have their own combination of settings.

Setting shown in *italic* cannot be changed.

Setting name	Description
Alarm relay enabled	When selected, trip value alarms from sensors will power the relay for 1 second.
Alarm relay event type	<p>The event types to toggle the alarm relay on. Two event types can be selected:</p> <ul style="list-style-type: none"> • Sensor alarms: the relay is toggles when one of the sensors is in alarm mode. • I/O board alarms: the relay is toggles when an event happens on the I/O board that requires user attention (e.g. lost network connection). <p>Any combination of these can be selected.</p>
DAC offset	Digital-Analog Converter offset to calibrate the analog channel and the connected device
Default gateway	The default gateway when using static network configuration.
Device name	One word descriptive name of the base station. This is reported to the DHCP server and can be used to address the base station in your network
DNS server	The DNS server when using static network configuration.
GPRS APN	The GPRS Access Point Name of your GPRS provider.
GPRS password	The password for GPRS access. This

	information is given by the GPRS provider.
GRPS username	The username for GPRS access. This information is given by the GPRS provider.
HTTPDB database hostname	The server address of the internet application, e.g. www.server.com.
HTTPDB IP port	The port address of the internet application
HTTPDB post interval	The interval at which the base stations sends data to the server.
HTTPDB post interval during alarm	The post interval used when a sensor has a Trip Value alarm.
HTTPDB URI	The exact location on the server of the application e.g. /application/
IP address	A static IP address when not using DHCP for network configuration.
<i>MAC address</i>	<i>The low-level unique MAC address of the Ethernet I/O board.</i>
Measured data ID	The data channel of a sensor to assign to an analog channel of an analog I/O board.
MODBUS address	The slave address of the base station on the RS485 bus.
Net mask	The network mask when using static network configuration.
RS485 baud rate	Communication baud rate between base station and external device
RS485 connection mode	Full duplex or half-duplex.
RS485 parity	No parity, even parity or odd parity.
Running average depth	Output is average of N previous samples. $N = 1 - 5$
Sensor	sensor for which the measurement

values are to be directed to this channel.

Test mode enabled

When selected, the channel is generating a continuous output.

Use DHCP

When selected, the I/O board will receive an IP address using an available DHCP server.

Appendix F Frequently asked questions (and answers)

F.1 When starting SensorGraph a COM-port error appears.

If you are using a USB-to-rs232 cable, it is possible the COM-port will change after you reinstall the cable into a different USB port.

Choose the correct COM-port for the base station in the Configuration tab by right clicking the base station and then clicking “Set connection”...

F.2 How to configure a base station for use with WebSensys?

F.2.1 Configure WebSensys to accept the new base station

You will need to add the serial number of the base station to the WebSensys database. You can do that in the “Administrator” tab in WebSensys. Refer to the WebSensys user manual if you want more information.

You can find the serial number on the sticker on the back of the base station.

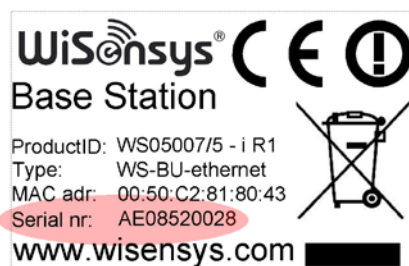


Figure 87: Sticker on the back of the base station

F.2.2 Global configuration

- Attach the base station to a serial port on the PC and start SensorGraph.
- Follow the initial configuration if necessary.
- Go to Configuration and select the I/O board of the base station you want to configure.

You need to know the Internet address (either an IP address or a hostname) on which your WebSensys server is accessible from the Internet or the local network. Please contact your network administrator if you do not know this. This is needed for the next configuration step.

- Insert the address of your WebSensys server into the “HTTP database hostname” field.
- Insert a “/” into the HTTPB URI field. Contact your administrator if you need another URI.

F.2.3 Further configuration of a base station with Ethernet connectivity

- Select “Use DHCP” if your network supports it. This will enable the base station to configure its network settings automatically.
- If you do not have DHCP enabled you will need to configure the settings manually:
 - Insert the “IP address” of the base station
 - Insert the “Net mask”
 - Insert the “Default gateway”
 - Insert the “DNS Server”

If you do not know the values of these settings, please contact your network administrator.

- Click “Save” to accept the settings

F.2.4 Further configuration of a base station with GPRS connectivity

- You will need to configure the following settings:
 - Insert the “GPRS APN” of your mobile provider.
 - Insert the “GPRS username” of your mobile provider, if any.
 - Insert the “GPRS password” of your mobile provider, if any.

If you do not know the values of these settings, please contact your mobile provider.

- Click “Save” to accept the settings

F.2.5 Problems connecting to the server (Ethernet)

It can happen that the base station cannot connect to the server, when DHCP is enabled, even if it seems that the network configuration is correct. This can happen when the DHCP server provides the base station with a primary and a secondary DNS server address.

The base station will only use the primary DNS server. If the primary DNS server is used for name resolving on the local network and the WebSensys server is not located on the local network, this could cause problems. What happens is that the primary DNS cannot convert the name of the WebSensys server to an IP address, which results in the base station not being able to contact the WebSensys server.

The solution for this problem is not to use DHCP, but use a fixed IP configuration and provide the base station with a DNS server that can resolve the name of the WebSensys server to an IP address.

F.3 How to use MySQL as an external database?

MySQL is not supported by SensorGraph. You can use PostgreSQL as an alternative.

F.4 What does 'discarding missing data' mean?

The WiSensys sensors support retransmitting missed data when no communication was possible between the sensor and base station. If such data is sent by a sensor, a message will appear in the 'Sensors' tab indicating that the data is being received and processed.

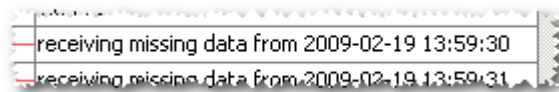


Figure 88: Receiving missed data

However, if 'discarding missed data' appears, the timestamps of the values cannot be calculated correctly. Make sure to consider the following points when using the functionality:

- Make sure there are at least two real-time values in the database before turning on the feature. At least two real-time values are needed for the functionality to work.
- Make sure the sensor is not out of range for too long, since this will make it impossible to calculate the timestamps also. See the following list of sample intervals in relation to the maximum out of range time.
 - 20sec → ~7 days (maximum of ~2 days of data can be recovered)
 - 60sec → ~21 days (maximum of ~6 days of data can be recovered)
- Do not change the sample interval of the sensor for the most accurate results.

F.5 How to use multiple installations of SensorGraph with one database?



The following section is for advanced users only.

It is possible to use multiple installations of SensorGraph with one database. This enables multiple installations of SensorGraph to receive real-time data individually but read log data from one database, which is updated by only one instance of SensorGraph.

Please pay attention to the following if you want to use the functionality:

- You must have knowledge of your network and know the basics of networking.
- You need a WS-BU-eth (with an Ethernet I/O board) base station to use the functionality, because each SensorGraph has to connect to the base station to get the most recent data.
- One of the computers with SensorGraph, which we call the 'master' from now, may not be powered off. In addition, SensorGraph should always run on that PC.
- The PC's with read-only access to the database, which we call 'slave' from now on, will NOT write data to the database. This is the job of the master.
- The master must also be accessible from the slave PC's (for example on a local network).
- Up to four instances of SensorGraph can be connected to a base station at a time, three via Ethernet and one with a standard serial connection.
- These steps are for the built-in database. If you are using an external database, you can configure all the SensorGraph installation the same but use, just as described below, only one installation as the master.

Follow the following steps for using this functionality:

- Install SensorGraph on the master PC, if you did not already do so.
- Start SensorGraph.
- Add a TCP/IP base station in the Configuration if you did not add a base station yet.
- Make a notation of the IP address of the maser PC. You can find the IP address in the status of your network connection. This IP is later needed for the configuration of the slave PC.
- Optionally, you can choose another directory where the database should be stored by going to Settings → Logging and changing the 'Log directory' to a more convenient location. Restart SensorGraph afterwards.
- Make a notation of the 'Log directory'. This is later needed for the configuration of SensorGraph on the slave PC.
- Install SensorGraph on a slave PC, if you did not already do so.

- Start SensorGraph in read-only mode by using the correct shortcut, with read-only in the name.
- Add the same TCP/IP base station as you added to the master PC.
- Go to Settings → Logging, and set the following values in the database configuration:
 - Log directory: insert exactly the same path as configured on the master PC, even if does not exist on the local PC.
 - Hostname or IP: insert the IP address of the master PC.
 - Connection mode: set to 'Only try remote server'.
- Restart SensorGraph.

SensorGraph should now connect to the database on the master PC, without errors. If errors occur, please check the configuration.

Also take into account that if the master PC is powered down or fails in any other way, the database will not be automatically updated by the slave PC's. To retrieve the lost data from the SD-card (if installed), you can use the 'Synchronization manager' on the master PC.

F.6 Why is the timestamp of all sensor data 1970, 1980 or 1990?

If the timestamp of incoming sensor measurements is 1970 or 1980, the real-time clock on your base station is not set correctly. You can synchronize the real-time clock the following way:

- Go to **Configuration** tab.
- Right-click on the **I/O board** and choose **Synchronize time**.

If the timestamp is 1990, the backup battery is probably becoming empty. Replace the battery and synchronize the time afterwards.

Newer versions of the software will detect large differences between the clock on the base station and the system clock automatically. If a significant difference is detected, a dialog box is shown asking the user to synchronize the RTC.

Appendix G GPRS Connection establishment problems

In order to aid diagnosing GPRS connection problems, the newer versions of the GPRS I/O Boards have a special statistics parameter that can be used to check what connection actions was the last that was successful.

The statistics parameter is called “*GPRS - Last successful connect step*” and this indicates the last successful actions in the GPRS connection establishment process by a number.

If there is a problem in the communication of the GPRS base station to the server, this statistics value is one of the places to look to determine what might cause the communication problem.

The table below lists all possible action numbers, their description and an indication of what to do to solve the problem, if there is something that can be done.

Action number	Description
	Action to take / Error cause
0	No successful action
	Problem communicating with the modem <ul style="list-style-type: none"> • Check that the modem power is connected • Check that there is a SIM card inserted • If power is connected, just let the base try again, if the problem persists, restart the base station
1	Successfully set the mode of the DTR line
	Problem communicating with the modem <ul style="list-style-type: none"> • Check that the modem power is connected • Check that there is a SIM card inserted • If power is connected, just let the base try again, if the problem persists, restart the base station
2	Extended error mode set and modem information retrieved
	Could not setup the parameters for IP communication over GPRS <ul style="list-style-type: none"> • Check that the modem power is connected • Check that there is a SIM card inserted • If power is connected, just let the base try again, if the problem persists, restart the base station
3	IP parameters setup
	Problem setting the APN in the modem <ul style="list-style-type: none"> • Check the APN that is specified in the I/O Board settings
4	GPRS provider information set (APN)
	Trying to set the GPRS username and password in the modem for GPRS communication

	<ul style="list-style-type: none"> Check the Username and password that are specified in the I/O Board settings
5	<p>GPRS Username and password set</p> <p>Checking to see if the GPRS connection is coming up</p> <ul style="list-style-type: none"> Check the GPRS antenna on the I/O Board in the base station There could be a provider problem The SIM-card could have a pin code set that is not "0000"
6	<p>GPRS Network is available</p> <p>Could not attach to the network for IP communication</p>
7	<p>IP communication activated</p> <p>Could not resolve the IP address for the specified hostname</p> <ul style="list-style-type: none"> Check the hostname specified in the I/O Board settings There could be a DNS problem on the GPRS network of the provider
8	<p>Hostname resolved to an IP address</p> <p>Error in the host IP address that was provided to the I/O Board by the GPRS network</p> <ul style="list-style-type: none"> Check the hostname specified in the I/O Board settings There could be a DNS problem on the GPRS network of the provider
9	<p>IP address validated</p> <p>GPRS modem initialized successfully. The software will fall-through to state 10 immediately, so no error causes for this state.</p>
10	<p>Modem reset during open socket action</p> <p>Could not open a socket to the server</p> <ul style="list-style-type: none"> Check the hostname in the I/O Board settings Check the port number in the I/O Board settings Check that the server can receive incoming connections on the specified port (firewall settings) Make sure the server software is listening on the correct port Possible GPRS network communication problems
11	<p>Socket connection to the server opened</p> <p>GPRS connection setup successful. If still no data is being received on the server, check the server logs and base station communication statistics for HTTP for possible problems.</p>

Appendix H Retransmitting missed data from sensors

There are two mechanisms of retransmitting missed data from the sensor when the connection between the base station and sensor did not work temporarily.

H.1 Old style

When using older sensors (software version depends on the type), you can either enable or disable the option to retransmit missed data.

- When the option is enabled, the sensor will retransmit missed data with at least 300 samples/hour (in case of a standard WS-DLT sensor). It sends 10 missed values every 2 minutes or the configured sample interval, whichever is shorter.

If FastTX is included in the firmware and extended sample interval (sample interval in minutes instead of seconds) is enabled, the sensor will send up to 6000 samples/hour.

- When disabled, the sensor will not retransmit missed data.

H.2 New style

When using newer sensors (software version depends on the type), you have 3 options for retransmitting missed data.

- **Fast:** the sensor will send up to 6000 samples/hour. This is the same as FastTX in older sensors. This setting should not be used when using GPRS I/O board. Do not this option if not really needed.
- **Normal:** the sensor will send at least 1200 samples/hour. This setting should be selected above the 'fast' option because it does not stress the ether as much.
- **Disabled:** The sensor does not retransmit missed data.

H.3 Missing data after sensor power reset

If the power of the sensor is reset or the battery has become empty, all the missed data in the memory is cleared. This is needed to prevent inconsistencies, which can occur because the sensor does not have a dedicated real time clock.

This is valid for battery as well as externally powered sensors.

Appendix I uIP TCP/IP stack copyright notice

Copyright (c) 2001-2006, Adam Dunkels and the Swedish Institute of Computer Science
All rights reserved.

Redistribution and use in source and binary forms, with or without modification, are permitted provided that the following conditions are met:

1. Redistributions of source code must retain the above copyright notice, this list of conditions and the following disclaimer.
2. Redistributions in binary form must reproduce the above copyright notice, this list of conditions and the following disclaimer in the documentation and/or other materials provided with the distribution.
3. The name of the author may not be used to endorse or promote products derived from this software without specific prior written permission.

THIS SOFTWARE IS PROVIDED BY THE AUTHOR 'AS IS' AND ANY EXPRESS OR IMPLIED WARRANTIES, INCLUDING, BUT NOT LIMITED TO, THE IMPLIED WARRANTIES OF MERCHANTABILITY AND FITNESS FOR A PARTICULAR PURPOSE ARE DISCLAIMED. IN NO EVENT SHALL THE AUTHOR BE LIABLE FOR ANY DIRECT, INDIRECT, INCIDENTAL, SPECIAL, EXEMPLARY, OR CONSEQUENTIAL DAMAGES (INCLUDING, BUT NOT LIMITED TO, PROCUREMENT OF SUBSTITUTE GOODS OR SERVICES; LOSS OF USE, DATA, OR PROFITS; OR BUSINESS INTERRUPTION) HOWEVER CAUSED AND ON ANY THEORY OF LIABILITY, WHETHER IN CONTRACT, STRICT LIABILITY, OR TORT (INCLUDING NEGLIGENCE OR OTHERWISE) ARISING IN ANY WAY OUT OF THE USE OF THIS SOFTWARE, EVEN IF ADVISED OF THE POSSIBILITY OF SUCH DAMAGE.