

# **EasyView**

**PUBLISHER**

Automatic export of graphs and statistics



# CONTENTS

<b>1.</b>	<b>INTRODUCTION</b> .....	<b>1</b>
<b>2.</b>	<b>ACTIVATE THE "PUBLISHER"</b> .....	<b>1</b>
<b>3.</b>	<b>WHERE IS THE "PUBLISHER"?</b> .....	<b>1</b>
<b>4.</b>	<b>PUBLISH!</b> .....	<b>2</b>
4.1	SOURCE .....	2
4.2	PUBLISH AS.....	2
4.3	UPDATE INTERVAL .....	2
4.4	URL ADDRESS .....	2
4.5	USER NAME AND PASSWORD .....	3
4.6	DOUBLE ARROW AT URL ADDRESS .....	3
4.7	LOCAL NETWORK.....	3
4.8	FTP SERVER.....	4
4.9	FINALLY .....	4
<b>5.</b>	<b>"MANOEUVRING"</b> .....	<b>5</b>
<b>6.</b>	<b>PUBLISHER ENTRIES</b> .....	<b>5</b>



# 1. Introduction

EasyView presents data as graphs in its Diagram window. Characteristic or key values, that often are statistical values, are concurrently available in the so called Info Table.

The contents of these sections may be automatically copied to any address (URL) or directory. The PUBLISHER, an optional plug-in, is used to achieve this.

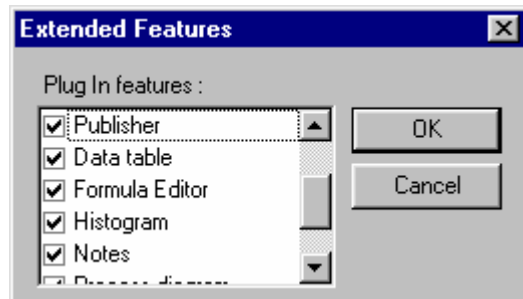
The Diagram window is copied in GIF format and the Info Table may either be copied in text or GIF format.

# 2. Activate the "Publisher"

The publisher has to be activated in order to be used.

Go to "Options/Extended features or click on the GL button.

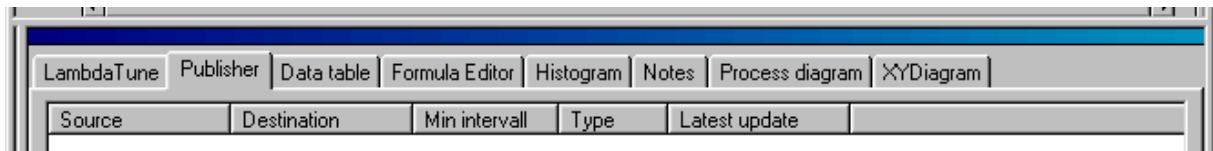
Check "Publisher" and click OK



# 3. Where is the "Publisher"?

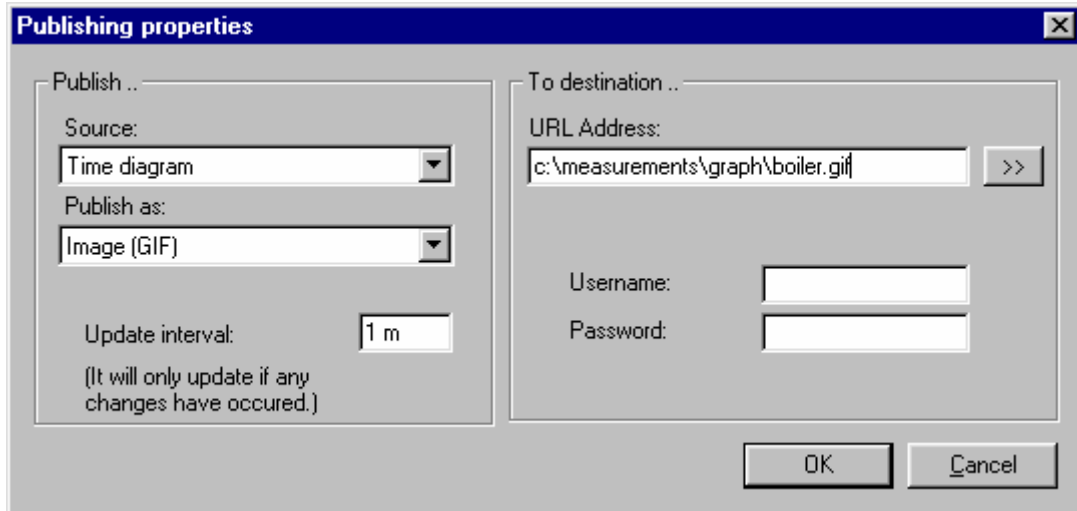
After activation you will find the Publisher among the other active Plug-ins. Pull them in from the right if they are hidden. Please consult the main manual if you don't know how.

The Publisher looks like this before your first "edition".



## 4. Publish!

We'll now make sure that your information is directed to the correct destination. Click the right mouse button in the Publisher. Select "New". This dialog will present itself:



### 4.1 Source

Select Time diagram or Info table as "Source".

A copy of the Time Diagram and/or statistical key values from the Info Table may be just what is needed on informative home pages.

### 4.2 Publish as

The Info Table may be published as either text or picture. Choose between text and GIF image. The Time Diagram may only be published in GIF format.

### 4.3 Update interval

Enter a suitable interval.

Attach time unit as seconds (s), minutes (m) or hours (h).

Please note that the target is not updated unless there has been a change.

### 4.4 URL Address

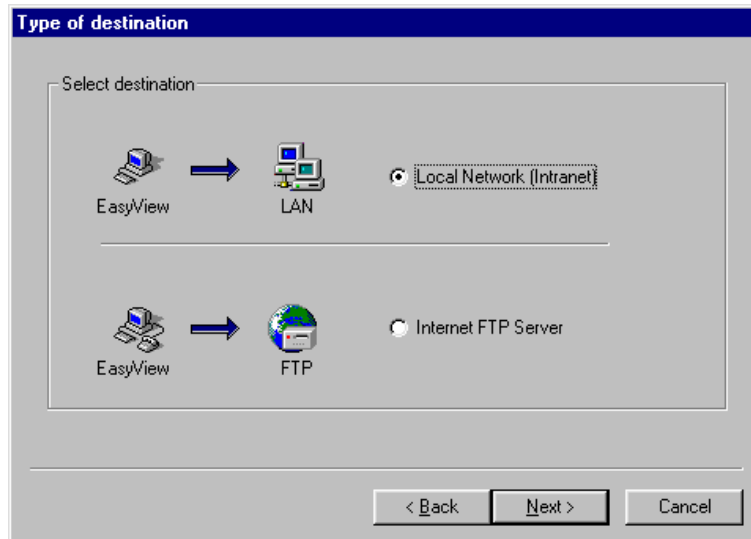
Having done all the above, it's time to specify the destination address. Enter the exact path including a file name in "URL Address". Otherwise you click the ">>" to browse for it.

## 4.5 User Name and Password

If your intention is to publish on a home page, you have to make the appropriate entries. You may also want to wait until the next step which is reached by clicking on the double arrow by the URL....

## 4.6 Double arrow at URL Address

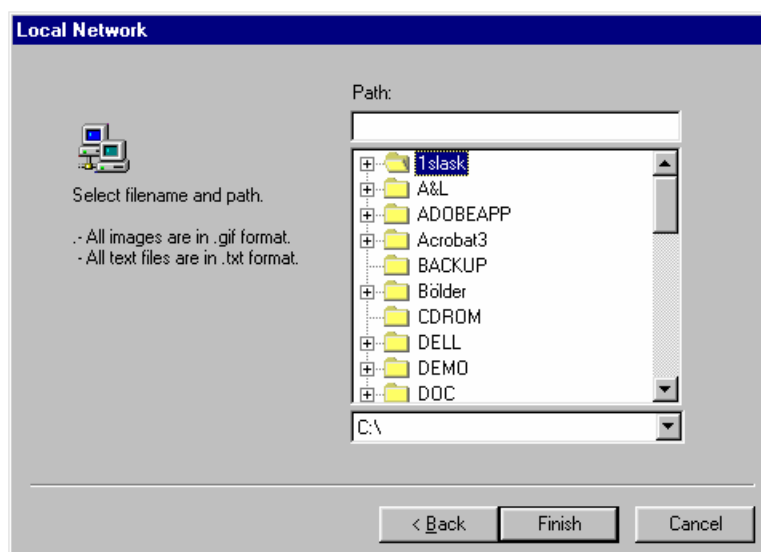
To find the destination we make use of the double arrow. It will take you to the following menu:



Call your systems engineer if you are unsure about what to do here.

## 4.7 Local Network

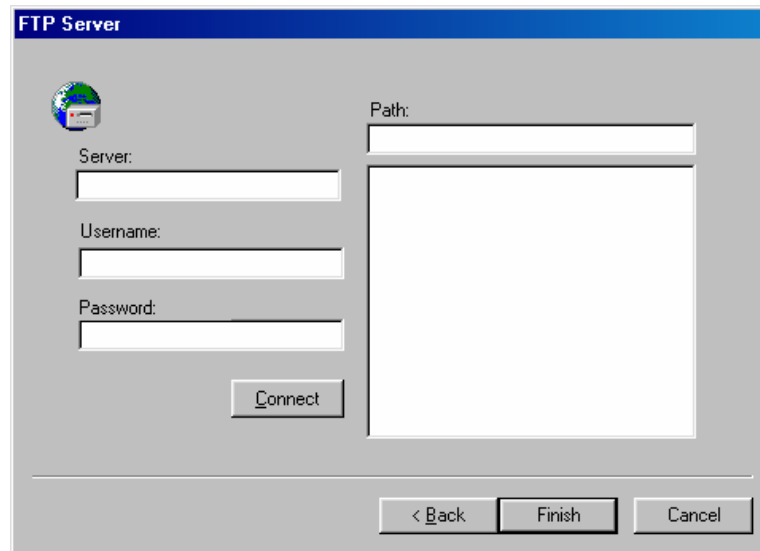
The next menu may look like this if you have selected "Local Network":



Click your way to the desired location and give the file a suitable name. Click Finish to return to the first menu.

## 4.8 FTP Server

Please fill in the required information in this menu if you want your publication to be shown on a home page.



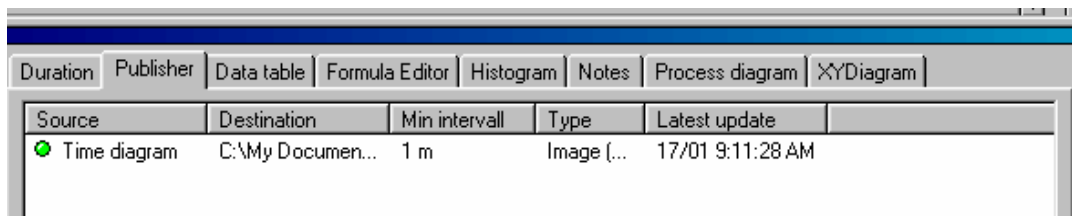
The screenshot shows a dialog box titled "FTP Server". On the left side, there are three input fields labeled "Server:", "Username:", and "Password:". To the right of these fields is a larger input field labeled "Path:". Below the "Server:" field is a "Connect" button. At the bottom of the dialog box, there are three buttons: "< Back", "Finish", and "Cancel".

Your web-master will know what to write in the input fields of this menu. Please enter server, user name and password and then click Connect.

## 4.9 Finally

After completing as in 4.7 or 4.8 and clicked "Finish" you will be returned to the first menu. Click OK if what you see is correct.

Your publisher will have a new entry as in the illustration below.



Source	Destination	Min intervall	Type	Latest update
Time diagram	C:\My Documen...	1 m	Image [...]	17/01 9:11:28 AM



## 5. "Manoeuvring"

By right-clicking an entry in the Publisher you will gain access to a menu where you may make some manoeuvres:

- "New" will create a new entry as in section 4.
- "Remove" will delete an entry.
- "Start/Stop" will activate or deactivate automatic publishing.
- "Publish now" forces a publish even if no change has taken place.
- "Properties" shows settings.

## 6. Publisher entries

Each item to be published is shown as a row or entry in the Publisher. These rows consist of a number of columns. They are, from left to right:

- Green or red status indicator: on or off.
- "Source" shows if Time diagram or Info table is published.
- "Destination" shows where the text or picture is published.
- "Min interval" is the shortest possible time between updates.
- "Type" shows whether it is in TXT or GIF format. I.e. text or picture.
- "Latest update" shows the date and time of the last update of the file.