

# User Manual

## MagniLink PCViewer Standalone

### **LVI America Inc.**

302 Saunders Road, Suite 200      Phone: (888) 781-7811  
Riverwoods, IL 60015, USA

[info@lviamerica.com](mailto:info@lviamerica.com)  
[www.lviamerica.com](http://www.lviamerica.com)

### **LVI Low Vision International**

Verkstadsgatan 5      Tel: +46 470-727700  
SE-352 46 Växjö      Faks: +46 470-727725

[info@lvi.se](mailto:info@lvi.se)  
[www.lvi.se](http://www.lvi.se)



## Table of Contents

1	About LVI.....	5
2	Introducing MagniLink PCViewer.....	6
2.1	Minimum system requirements .....	6
2.2	Recommended system requirements .....	6
3	Installation of software .....	7
4	Licensing .....	10
4.1	Voices and functions.....	11
5	Using the software .....	12
5.1	Functions via menus .....	12
5.2	Functions via the keyboard .....	16
5.3	Functions via the mouse .....	19
5.4	Information and settings window .....	19
5.5	Quality of OCR processing .....	24
6	Update software .....	25



## 1 About LVI

LVI Low Vision International AB was founded in 1978 and is one of the world's leading manufacturers of equipment for persons with visual impairments. Development of new products takes place in close cooperation with users and professional staff within the low vision rehabilitation industry. LVI is quality-certified in accordance with ISO 9001 and environmentally-certified in accordance with ISO 14001.

The information in this manual has been carefully checked and is believed to be accurate. However, LVI assumes no responsibility for any inaccuracies that may be contained in this manual. In no event will LVI be liable for direct, indirect, special, exemplary, incidental, or consequential damages resulting from any defect or omission in this manual. In the interest of continued product development, LVI reserves the right to make improvements in this manual and the products it describes at any time, without notice or obligation.

## 2 Introducing MagniLink PCViewer

MagniLink PCViewer is a piece of software used for the OCR processing of texts, which can then be read aloud via speech synthesis. You can save and open the results of the OCR processing and choose between a number of viewing modes. You can also connect a MagniLink camera system and put what the camera sees through OCR processing.

### 2.1 Minimum system requirements

- Microsoft Windows 7.
- i3 processor, 1 GB RAM (32 bit) 2 GB RAM (64 bit).

### 2.2 Recommended system requirements

- Microsoft Windows 10.
- i5 or i7 processor, 4 GB RAM, external graphics card with at least 512 MB inbuilt memory.

LVI has tested the software on several computers without any problems, but there is no guarantee that the system will function on all computers that comply with the specifications. LVI recommends testing the software with the computer which will be used, in order to ensure compatibility.

### 3 Installation of software

#### NOTE



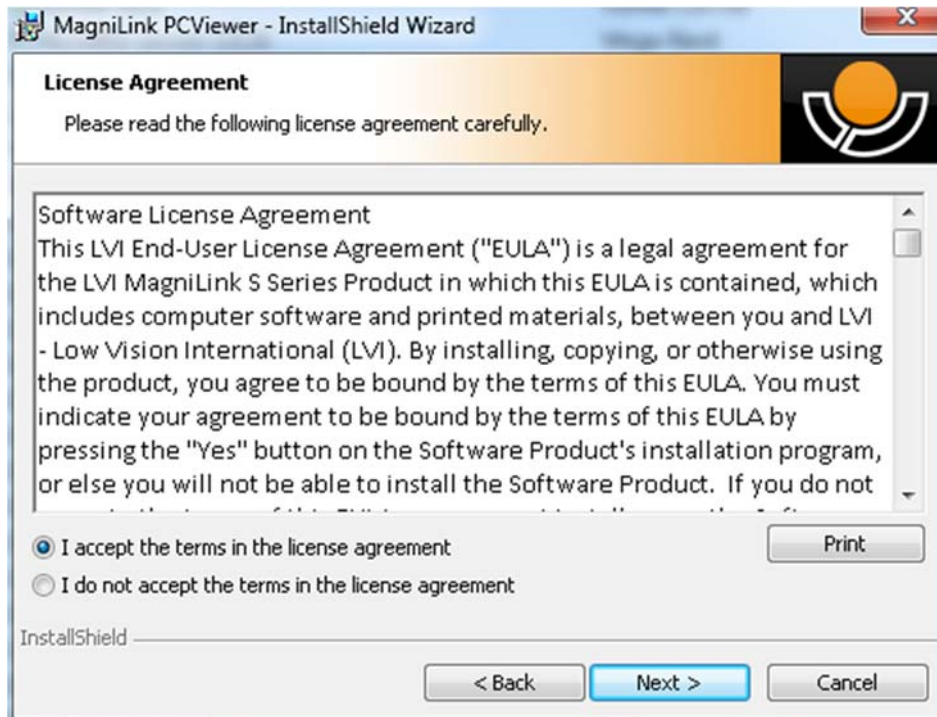
Installation requires administrator privileges on the computer in question and is performed on the user account currently in use.

Insert the USB stick containing the software into one of the computer's USB ports. Start installation by clicking on the "**Setup**" file in the "**MagniLink PCViewer**" folder.

When the installation program starts, follow the instructions on the screen to complete installation of the software, or see below for a more detailed description.



Select "**Next**" in the dialogue box "**Welcome to the InstallShield Wizard for MagniLink PCViewer**".

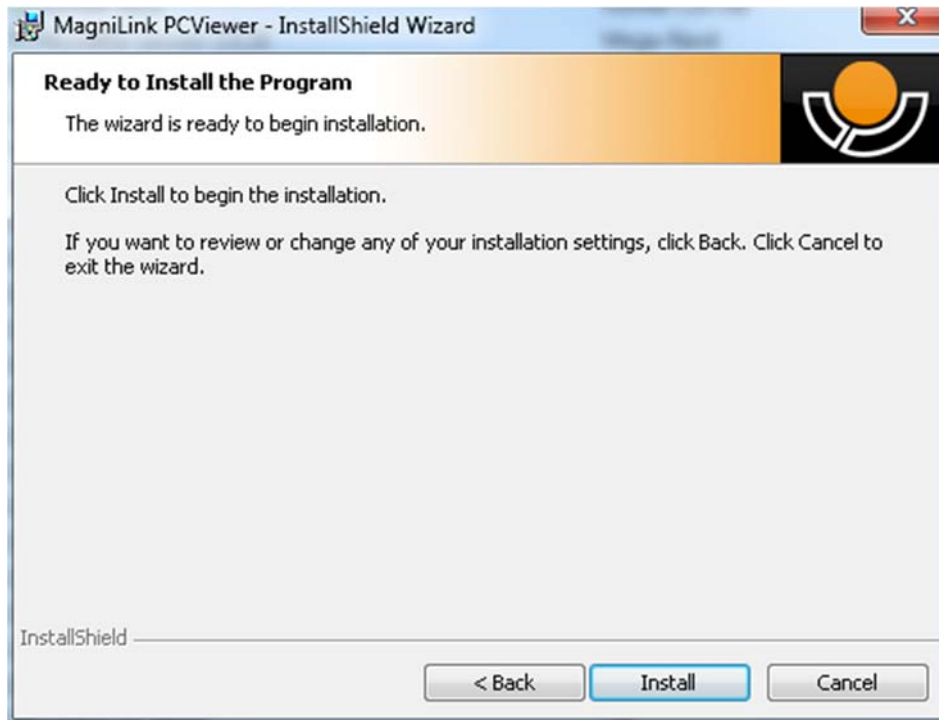


Read the text in "License Agreement", approve this by selecting "I accept the terms of the license agreement" and click on "Next" to start the installation.

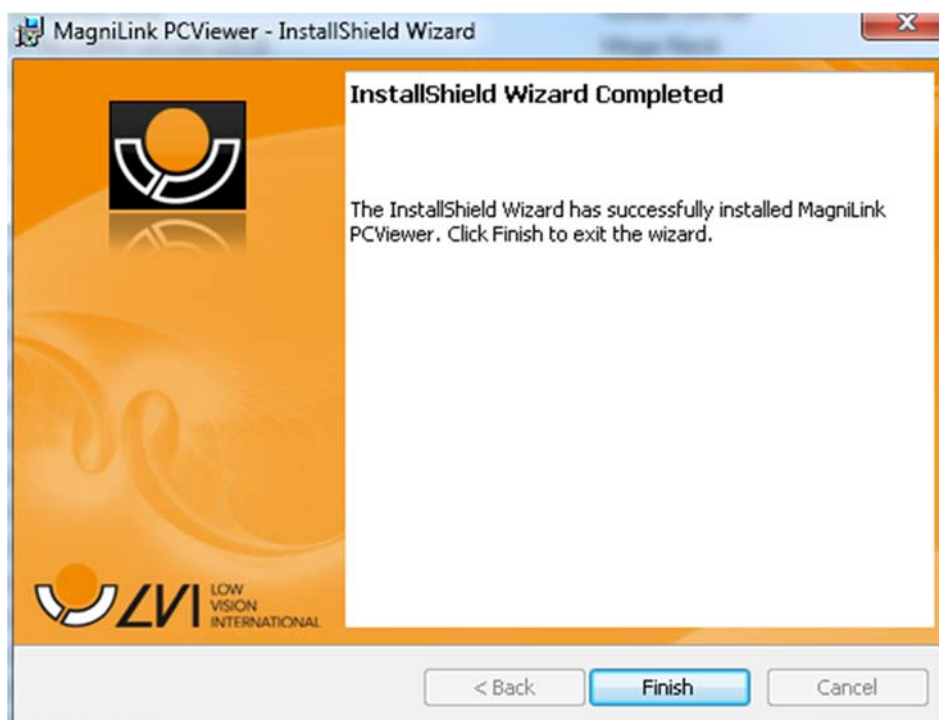


Here you can select the languages that you have a licence for. Then click "Next" to continue with the installation.





Select "Install" in the dialogue box "Ready to Install the Program".

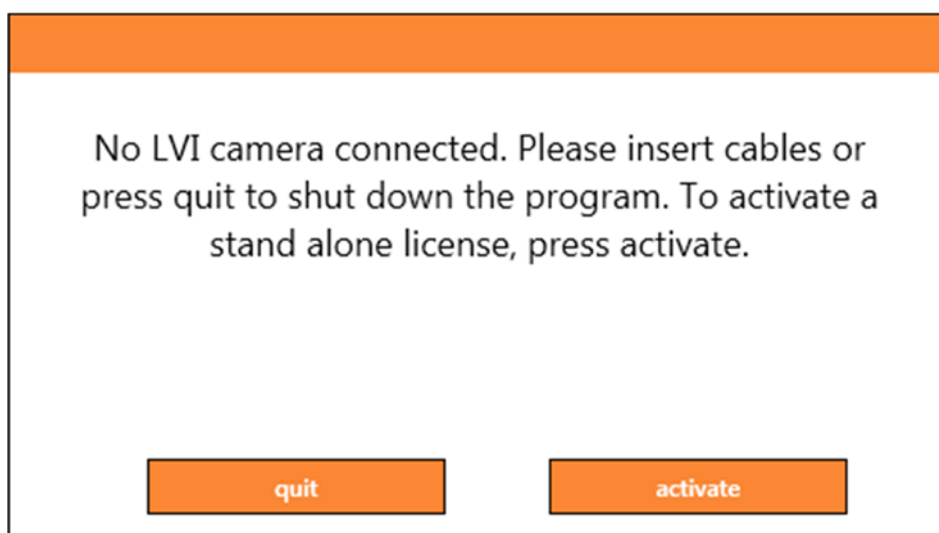


Select "Finish" in the dialogue box "InstallShield Wizard Complete".

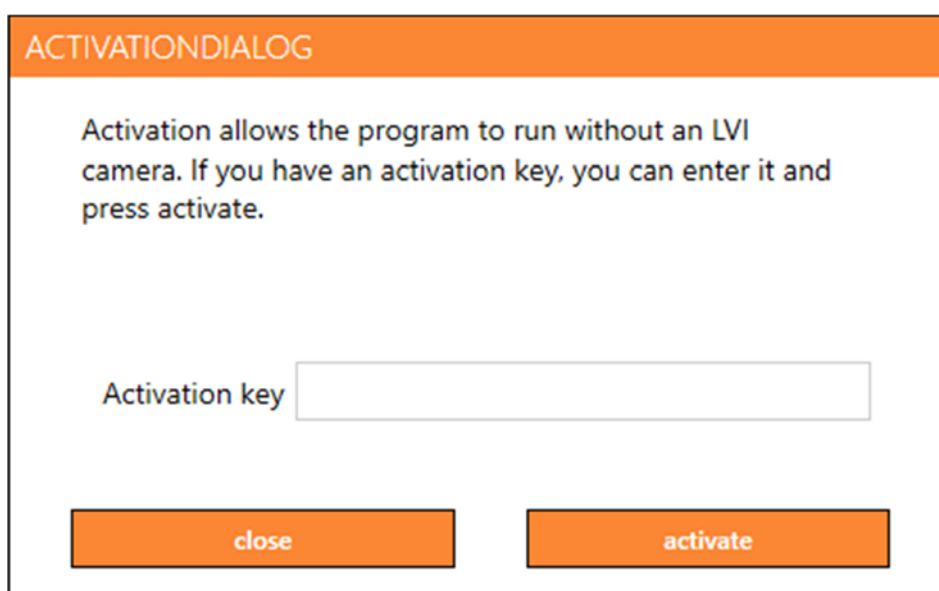
## 4 Licensing

By licensing the software to a computer, you can use the software without a connected camera. To license the software you will need an activation key. Activation keys can be purchased from your LVI distributor.

To activate a computer license, launch the application without a camera connected. The following dialogue will be displayed.



Click on "activate". If the application establishes contact with the activation server, the following dialogue box will be displayed.



Enter your e-mail address and your activation key, then click on "activate". You can now start using the software without a camera.

**ACTIVATIONNOINTERNETDIALOG**

The application was unable to connect to the activation server. To activate on a computer without internet connection please follow the steps below.

Contact your LVI dealer and provide them with the following information:

A. Your activation key.  
B. Your computer ID shown below.

You will then receive a new activation key that will work on your computer.

Computer Id    ECD0A0E0DFEFBEFB

Activation key   

close

activate

The following dialogue box is displayed if there is no internet connection or the application is unable to connect to the activation server. Follow the instructions and contact your LVI distributor in order to activate the applications.

## 4.1 Voices and functions

the software can be licensed with various functions.

- It is possible to license the system so that the software does not communicate with the internet.
- It is possible to license the system with voices in the following languages:  
English (US), English (UK), German, French, Finnish, Italian, Dutch (BE), Dutch (NL), Swedish, Danish, Polish, Spanish, Portuguese, Norwegian, English (AU), Russian, French (CA), Arabic, Hebrew, Hungarian, Rumanian, Bulgarian, Czech, Slovakian, Croatian, Turkish, Greek.

## 5 Using the software

The software can be started from the icon on the desktop, from the start menu or using the short cut command Ctrl + Alt + S.

### 5.1 Functions via menus

#### 5.1.1 OCR tab

The following tab is only shown if the system has an OCR licence.



##### Save documents

A dialogue box opens. A file name (today's date and time) is suggested automatically. It is possible to save the text as a Word file (.docx), PDF file, text file (.txt), WAV file (.wav) or zip file.



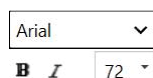
##### Open document (with OCR processing)

A dialogue box opens. From the dialogue box, select the file you wish to open. It is possible to open PDF files and image files, .bmp, .jpg, .png, .gif and .tiff, as well as saved zip files.



##### Change colours

Changes colours of the OCR processed text.



##### Font

Used to change the font of the OCR text. It is also possible to choose bold and italic text. The used font does not impact the OCR result.



##### Start/Pause reading



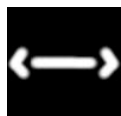
##### Stop reading

The next reading will begin from the start of the text.



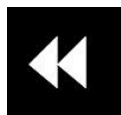
### Change display mode

Changes the display mode for OCR processed text. The display modes available are "page view", "row view", "word view", "image view", "image and word" and "image and row".



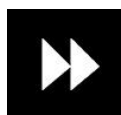
### Silent display mode

Switches to silent display mode. There are two silent modes; one where the text is moved horizontally on one line and one where the text is moved vertically in a column.



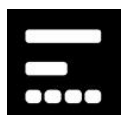
### Read previous

With this button, the user can go backwards through the text. If the reading mode is set as character, one character is read for each keystroke. If the reading mode is word, you move backwards through the text word by word. If the reading mode is sentence, you move backwards one sentence. If the reading mode is block, you move backwards one block.



### Read next

With this command, the user can move forward in the text. If the reading mode is set as character, one character is read for each keystroke. If the reading mode is word, you move forward through the text word by word. If the reading mode is sentence, you move forwards one sentence. If the reading mode is block, you move forwards one block.



### Switch reading mode

This command selects the reading mode that is to be employed when the "Read previous" or "Read next" command is entered. The modes available are: character, word, sentence, block and view. The modes that can be selected change depending on the display mode.



### Volume and speed

The upper slider sets the volume and lower regulates the speed of the speech.



### Pages

Shows all OCR processed pages. Click one of the pages to change page.



### Notepad

Opens the OCR page in the Notes tool. Hold shift to open all pages.



### Next split screen mode

Switches to the next split screen mode. In order to switch to the previous mode, hold down Shift when clicking on the button.



### Always on top

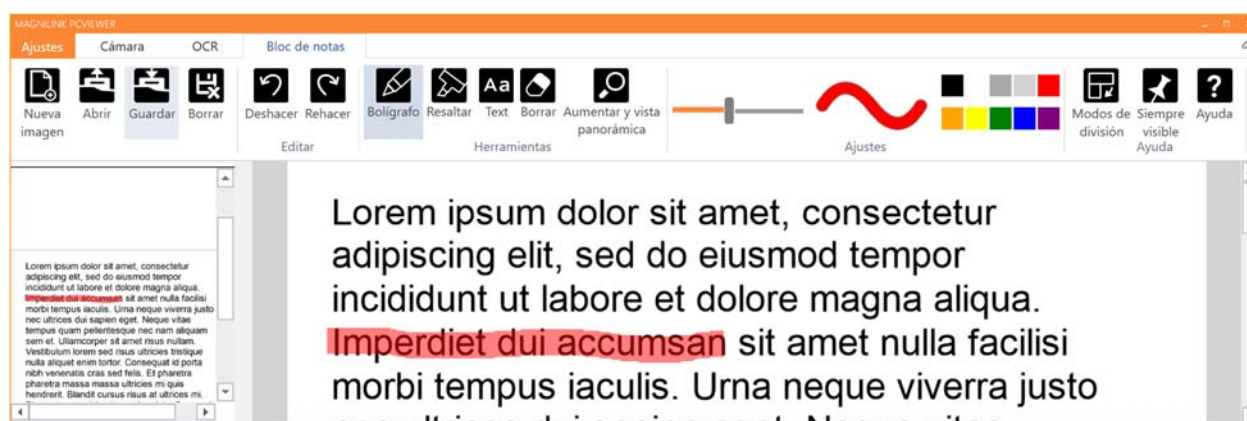
Activates/deactivates "always on top"



### Help

Opens the user guide in the standard application for showing PDF files.

## 5.1.2 Notepad tab



The notes tool consists of three components.

- At the top is a menu bar with buttons.
- On the left is a list of pictures. By clicking a picture, you can navigate to it. You can delete an image by clicking in the upper right corner.
- A surface where you can draw, enlarge and pan in the picture.



### New image

Opens a new blank page.

**Open**

Opens the bild. The system can open images in .jpg and .png format.

**Save image**

The system can save images in .jpg and .png format.

**Delete**

Deletes the current page.

**Undo****Restore**

Restores after pressing undo.

**Pen**

Draw with a pen.

**Highlight**

Highlight with a highlighter.

**Text**

Insert text. You can move text around after inserting.

**Delete**



**Magnify and pan**  
Magnify and pan the image.



**Size**  
Sets the size of pens and text.



**Color**  
Changes the pen and text colour



**Next split screen mode**  
Switches to the next split screen mode. In order to switch to the previous mode, hold down Shift when clicking on the button.



**Always on top**  
Activates/deactivates "always on top"



**Help**  
Opens the user guide in the standard application for showing PDF files.

## 5.2 Functions via the keyboard

Most functions can be handled using the keyboard. The shortcut commands can be changed in settings. Below are the standard settings for shortcut commands.

F1	Natural colours
F2	Positive colours forwards
Shift + F2	Positive colours backwards
F3	Negative colours forwards
Shift + F3	Negative colours backwards
Right arrow	Increase brightness/contrast
Left arrow	Reduce brightness/contrast
Ctrl + A	Always on top



Ctrl + H	Hide menus
F12	Open user guide
F9	Settings
F11	Standard settings
F7	Take a picture and open in Notepad
Ctrl + C	Copy image or text
Ctrl + M	Minimise application
F8	Next view
Ctrl + F8	Previous view
Ctrl + Minus	Reduce menu size
Ctrl + Plus	Increase menu size
Ctrl + V	Paste The pasted text replaces existing text.
Ctrl + Shift + V	Paste and add The pasted text is added to a new page.
Alt + F5	Save documents
Alt + F6	Open documents
Up arrow	Increase magnification
Down arrow	Decrease magnification
Shift + Plus	Increase font size
Shift + Minus	Decrease font size
1	Start reading
2	Stop reading
B	Change display mode
N	Silent mode
3	Read previous
4	Read next
5	Switch reading mode
Page Down	Next page If several pages have been scanned, you move to the next page.

<b>Page Up</b>	<b>Previous page</b> If several pages have been scanned, you move to the previous page.
<b>Delete</b>	<b>Remove current page</b> If several pages have been scanned, you remove the current page.
<b>8</b>	<b>Reduce volume</b>
<b>9</b>	<b>Increase volume</b>
<b>6</b>	<b>Reduce speaking speed</b>
<b>7</b>	<b>Increase speaking speed</b>
<b>Ctrl + 0</b>	<b>Next voice</b>
<b>A</b>	<b>Pan left</b> (If the document is magnified)
<b>D</b>	<b>Pan right</b> (If the document is magnified)
<b>W</b>	<b>Pan up</b> (If the document is magnified)
<b>S</b>	<b>Pan down</b> (If the document is magnified)

The following commands are used to control Notepad functions.

<b>Ctrl + N</b>	<b>New Page</b>
<b>Ctrl + O</b>	<b>Open image</b>
<b>Ctrl + S</b>	<b>Save image</b>
<b>Ctrl + Z</b>	<b>Undo</b>
<b>Ctrl + Shift + Z</b>	<b>Redo</b>
<b>Ctrl + P</b>	<b>Select pen tool</b>
<b>Ctrl + L</b>	<b>Select the highlighter tool</b>
<b>Ctrl + T</b>	<b>Select text tool</b>
<b>Ctrl + E</b>	<b>Select the eraser tool</b>
<b>Ctrl + F</b>	<b>Select the pan tool</b>

## 5.3 Functions via the mouse

Certain functionality can be controlled with the mouse.

- The left mouse button is used to start or stop the speech.
- The scroll wheel can be used to enlarge or shrink the image and font size.
- By holding down the right mouse button or scroll wheel and then moving the mouse cursor you can pan in the picture (If it is enlarged).

It is possible to open a document by dragging and releasing it into the application.

## 5.4 Information and settings window

The Information and settings window consists of a number of different tabs that contain application information and alternative settings.

### 5.4.1 About the application

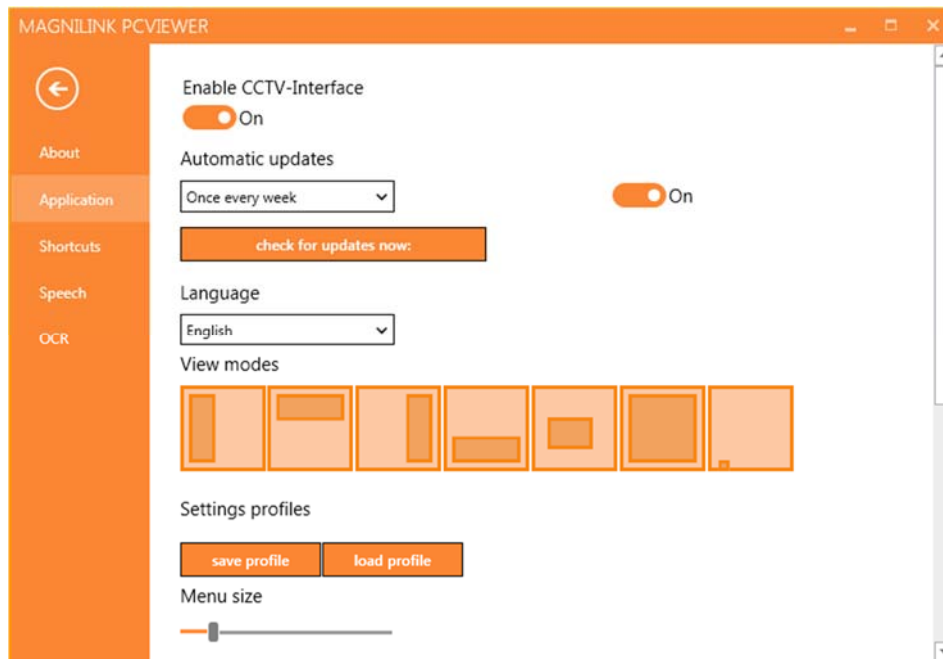


Information regarding the software version and license can be found under this tab.

To deactivate a computer license, press "remove license". The license will then be deactivated on the server and it will be possible to activate it on another computer.

If you want to update the camera license or activate a computer license, you can do it by pressing the "enter license" button.

## 5.4.2 Application Settings



### Activate CCTV interface

If this function is activated, MagniLink PCViewer supports working with the magnification software from ZoomText and SuperNova.

### Automatic updates

This can be set if MagniLink PCViewer is to search for updates. You can also set how often it will search: "Once per day", "Once per week" or "Once per month". You can also choose to make updates manually by clicking "search for updates now" (note: an internet connection is needed for both automatic and manual updates).

### Language

Change the language of the software. The software is set to use the same language as the computer's default. If this language is not available, English is automatically selected as default.

Available languages:

- English
- German
- Danish
- Spanish

- Finnish
- French
- Dutch
- Norwegian
- Swedish

### Split screen mode

It is possible to choose the mode you want when changing split screen mode.

### Settings profiles

It is possible to save and load settings profiles.

### Menu size

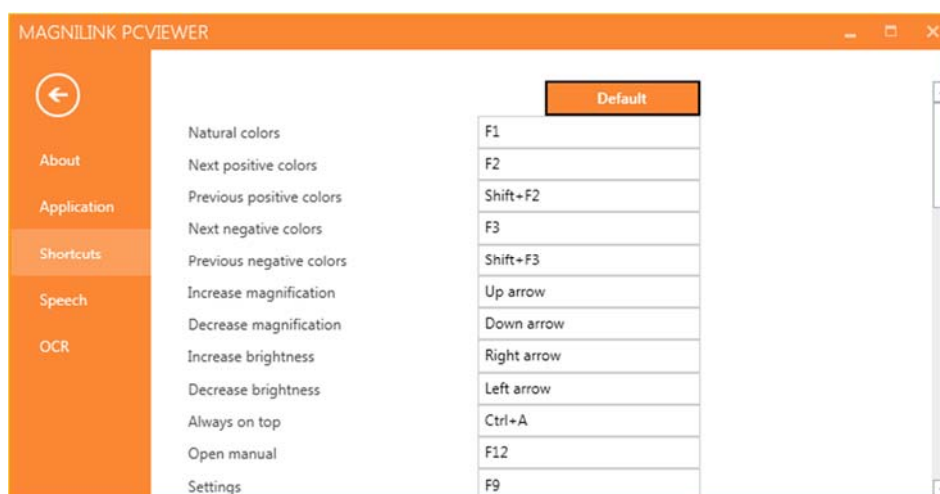
The size of the menus and buttons can be changed here.



### Groups

It is possible to choose which groups of buttons appear in the menus.

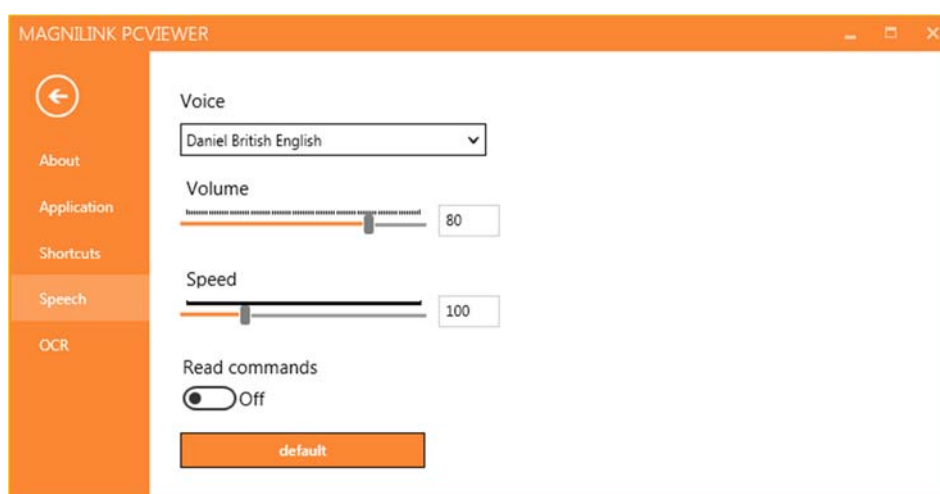
### 5.4.3 Short cut commands



Here the short cut commands used for the application can be changed. To change a short cut command, tab to the command that is to be changed and enter the new keyboard combination. It is possible to set two different combinations for the same command. If a combination already being used for another command is entered, the other command will be erased. A new keyboard combination will need to be entered for the other command.

It is also possible to make a keyboard shortcut global. A global keyboard shortcut can be used also when the application is inactive.

### 5.4.4 Speech Settings



#### Voice

If several voices are available, the user can choose between them.

## Volume

Setting the sound level of the voice.

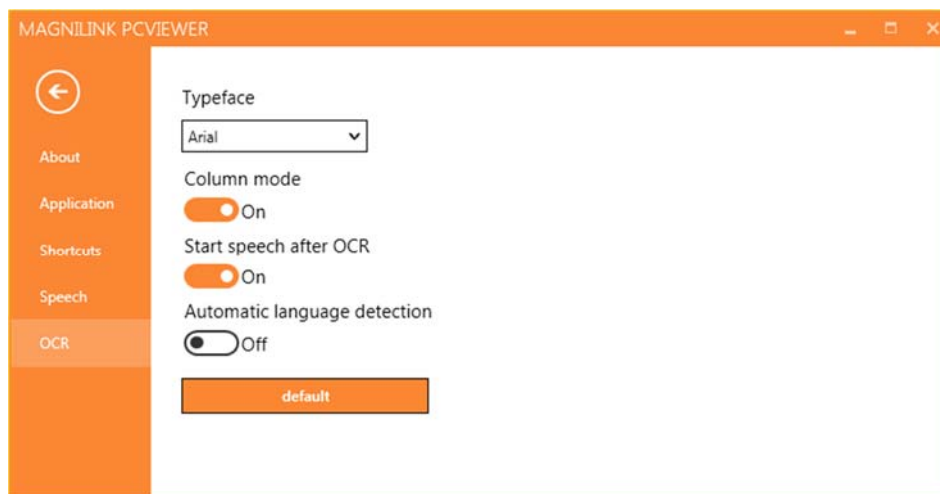
## Speed

Setting the speaking speed.

## Read command

When this is checked, the application reads out the menus when you use them.

## 5.4.5 OCR Settings



### Font

Here the user can set which font is to be used to display the OCR processed text. The font that is used has no effect on the result of the OCR processing.

### Column mode

When this setting is active, the OCR engine processes the text by column, which is useful if text from a newspaper is to be OCR processed.

### Start speech after OCR

If this box is ticked, text will automatically be read aloud after an image has been OCR processed.

### Automatic language identification

When this function is activated, the application attempts to identify the language that has been OCR processed and change the voice accordingly.

## 5.5 Quality of OCR processing

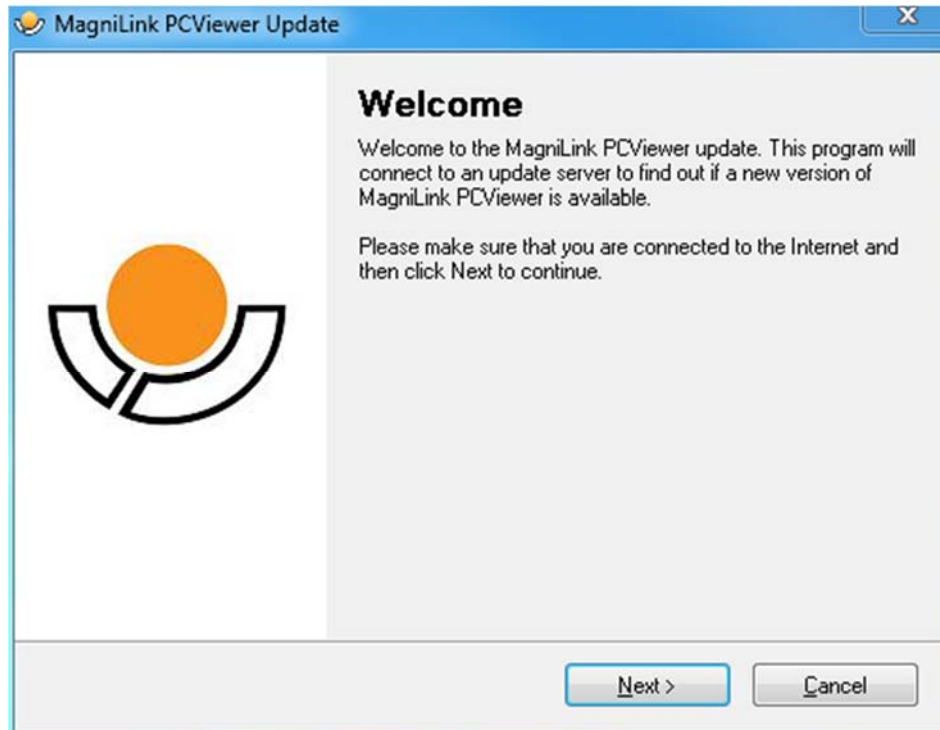
In order to optimize the results of the OCR conversion, you should bear in mind the following.

- Ensure the magnification is sufficient. Very small text produces poor results in the OCR software. A minimum of 12pt is recommended for the lowest magnification on the reading camera.
- Certain fonts can be difficult for the OCR engine to interpret.
- It is important that the text contrast is sufficient.
- It is important that the OCR engine's language is the same as that of the text.

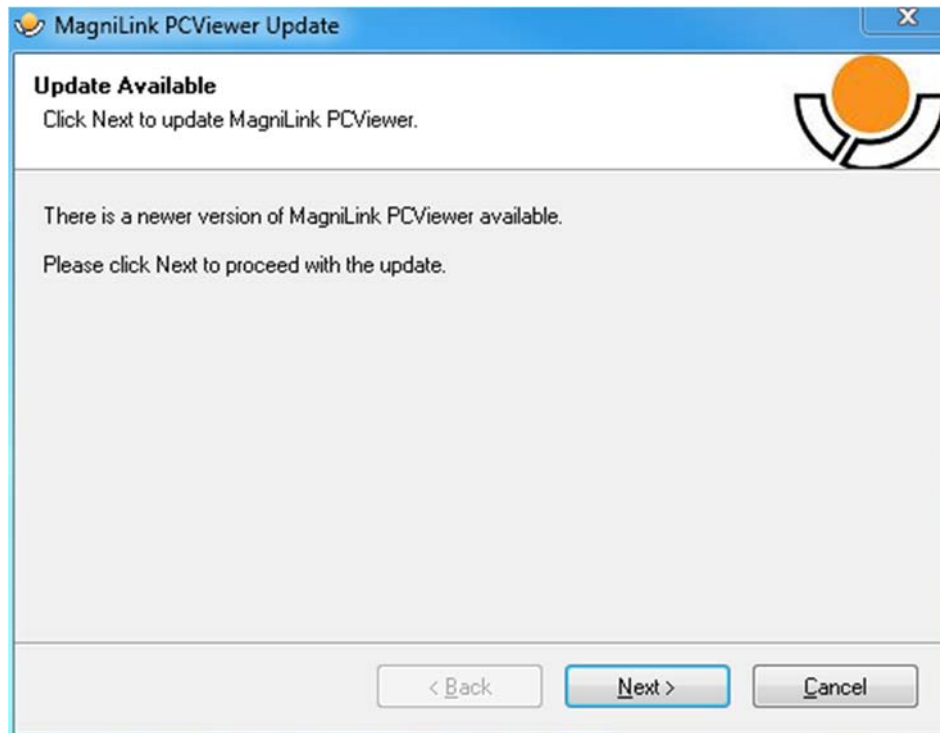


## 6 Update software

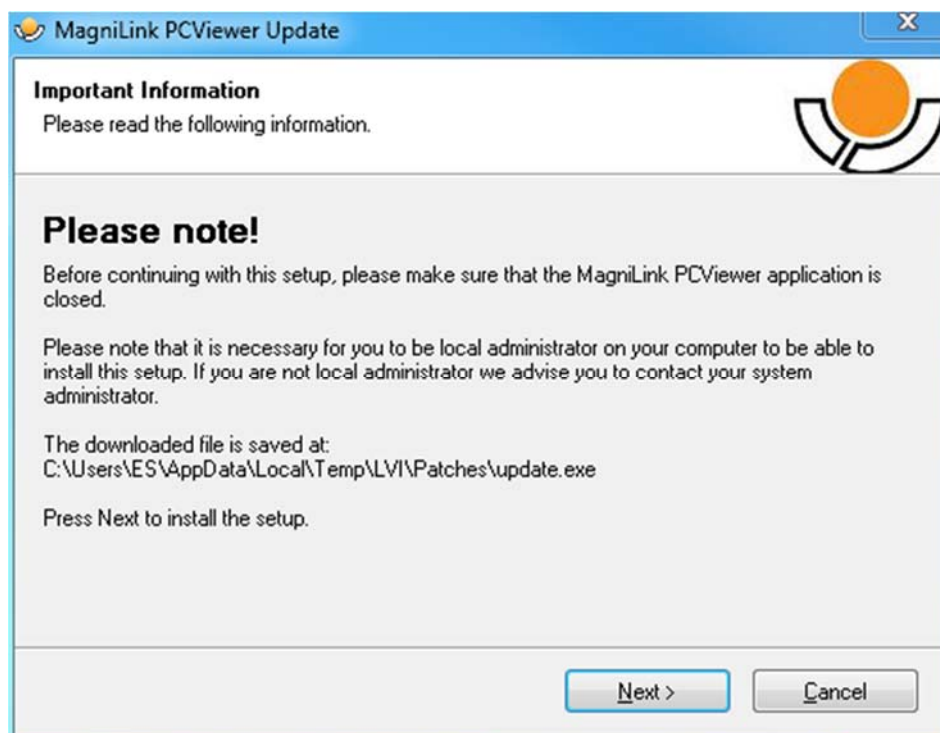
When a new version of the software is released, an update can be made. Follow the instructions below when the application finds a new version.



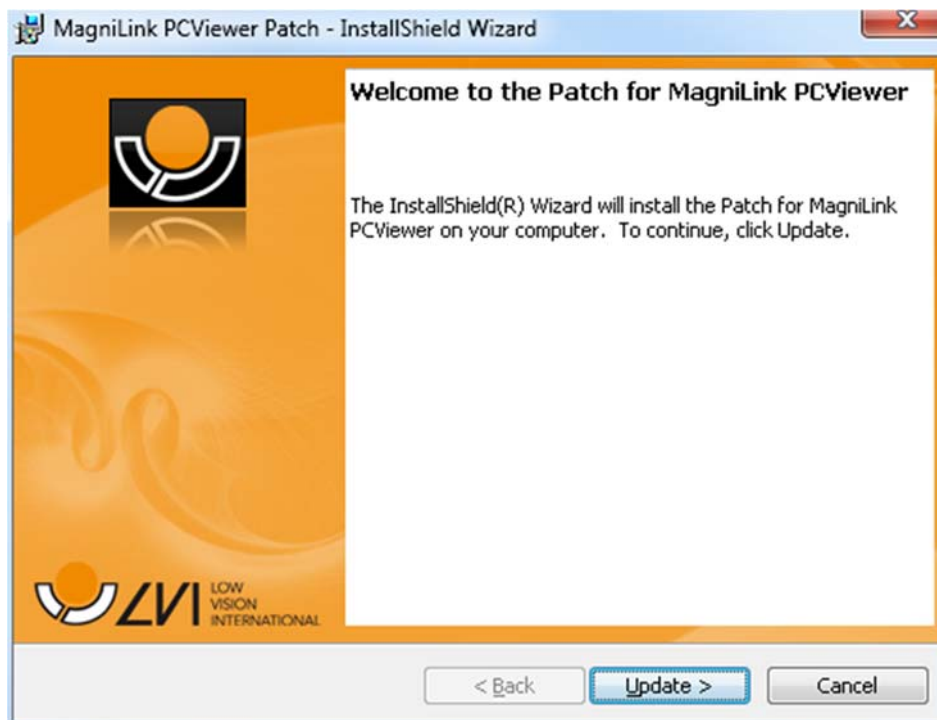
Click "**Next**" in the dialogue box "**Welcome**". If there is an update, the following dialogue box is shown.



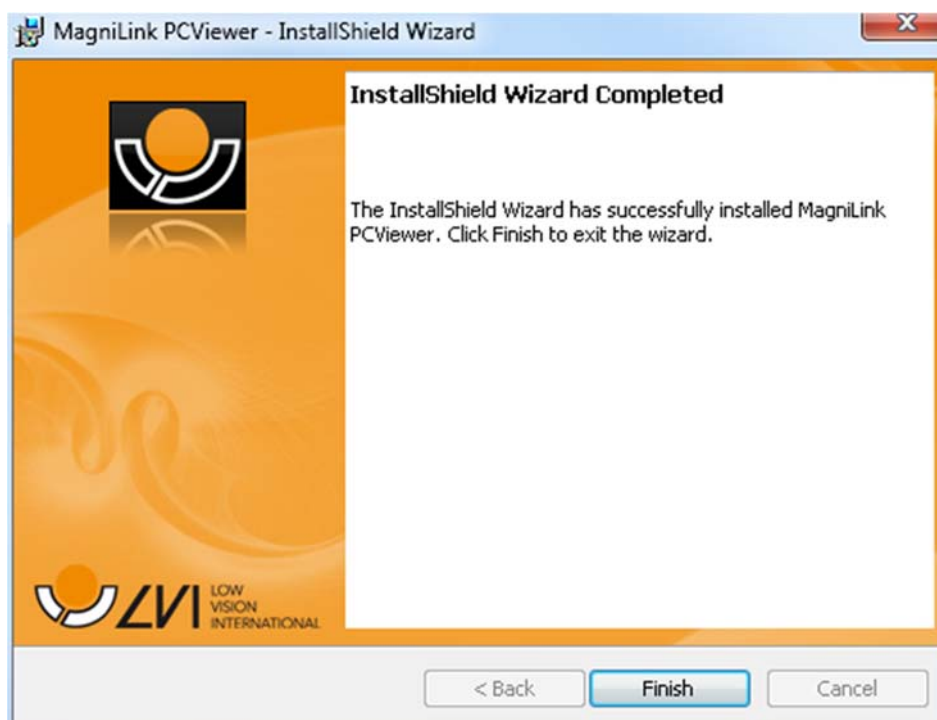
Click **"Next"** in the dialogue box **"Update available"** to start downloading the update.



Ensure that you close MagniLink PCViewer before clicking **"Next"** in the dialogue box **"Important information"**.



Click "Next" in the dialogue box "Welcome to the Patch for MagniLink PCViewer".



Click "Finish" in the dialogue box "Installshield Wizard Completed".

## Alphabetical index

About LVI .....	5
About the application .....	19
Application Settings.....	20
Functions via menus.....	12
Functions via the keyboard.....	16
Functions via the mouse .....	19
Information and settings window.....	19
Installation of software .....	7
Introducing MagniLink PCViewer.....	6
Licensing .....	10
Minimum system requirements.....	6
Notepad tab .....	14
OCR Settings .....	23
OCR tab .....	12
Quality of OCR processing.....	24
Recommended system requirements.....	6
Short cut commands .....	22
Speech Settings.....	22
Update software .....	25
Using the software.....	12
Voices and functions .....	11