



# WD-66CT

## CUTLERY AND TRAY DISHWASHER

- Cutlery and tray dishwasher for automatic high capacity system, optimal dish and drying results.
- Feeding system in combination with tray and cutlery dishes are washed standing gives high capacity and optimal use of dish and drying function.
- Optimum cleaning of cutlery through placement in special baskets. The cutlery is dished standing, no cutlery blocking each other.
- The clean trays can either be stacked directly in a trolley, or for increased capacity via an external tray changer in two trolleys filled sequentially.
- The cutlery is collected in a box or on one conveyor connected directly to an ACS automatic cutlery sorter.
- Automatic and manual operation: For use in fully automated handling systems of trays and cutlery. The machine can also be run manually and used as a backup machine. Possibility to wash other goods in baskets and GN-containers directly on the band.



- Double heat recovery through condensing unit and heat exchanger. A total of about 17 kW is recovered.
- Low water and energy consumption.
- Very good wash and drying results.
- Good working environment, the machines are sound and heat insulated with large well-balanced doors which are easy to open-close.
- Easy to clean, open construction.
- High capacity, 1500 trays / hour.
- Handles large trays, height up to 530 mm, width 500 mm.
- Based on well-proven construction - simplifies service and spare part bearing.

### OPTIONS

- Steam-heated through electrically heated drying zone (50-140 kPa) or fully steam-heated machine (150-250 kPa).
- Stainless steel pumps.
- Demineralised water in the final rinse.
- Protection bar front side.
- Manual flush pressure switching for potwashing / normal dish.
- Break tank incl. booster pump. Back flow protection according to EN1717.
- Electrical connection of tray stacker/ tray changer.

TECHNICAL DATA	WD-66CT
Pump motor, pre-wash (kW)	3
Pump motor, chemical wash (kW)	3
Pump motor, final rinse (kW)	0.74
Condensing fan (kW)	0.22
Fan, drying zone 1 (kW)	0.62
Fan, drying zone 2 (kW)	0.62
Drive motor, belt (kW)	0.15
Booster heater 1 (kW)	9
Booster heater 2 (kW)	6
Tank heater, chemical wash (kW)	9+9
Drying zone 1, heater (kW)	9
Heat recovery, cooling surface (m <sup>2</sup> )	51
Heat recovery fan, flow (m <sup>3</sup> /hour)	800
Tank volume, pre-wash tank (litres)	104
Tank volume, chemical wash tank (litres)	120
Tank volume, final rinse tank (litres)	21
Weight, machine in operation (kg)	1560
Enclosure class (IP)	55

CAPACITY AND OPERATING DATA	WD-66CT
Capacity (trays/min)	25
Capacity cutlery (cutlery items/min)	75
Max. tray size (mm)	530x530
Cold water consumption, final rinse (litres/min)	5
Energy consumption (kWh of connected power)	70-90%
Steam consumption at 150-250 kPa (kg/hour) *	55
Steam consumption at 50-140 kPa (kg/hour) *	55
Surface temperature at a room temperature of 20°C (°C)	35
Noise level (dB(A)) **	72
* When the machine is steam-heated.	
** Measured 1 metre from the side of the machine.	

CONNECTION, ELECTRICALLY HEATED MACHINE	WD-66CT
Total connected power (kW)	50.4
Main fuse 400V 3N~ (A)	100
Max. connection area 400V 3N~ (L1-L3,N,PE) Cu (mm <sup>2</sup> )	70

CONNECTION, STEAM-HEATED MACHINE 150-250 kPa	WD-66CT
Total connected power (kW)	8.4
Main fuse 400V 3N~ (A)	25
Max. connection area 400V 3N~ (L1-L3,N,PE) Cu (mm <sup>2</sup> )	35
Steam connection (internal thread)	R 1"
Condensing water connection (internal thread)	R ¾"

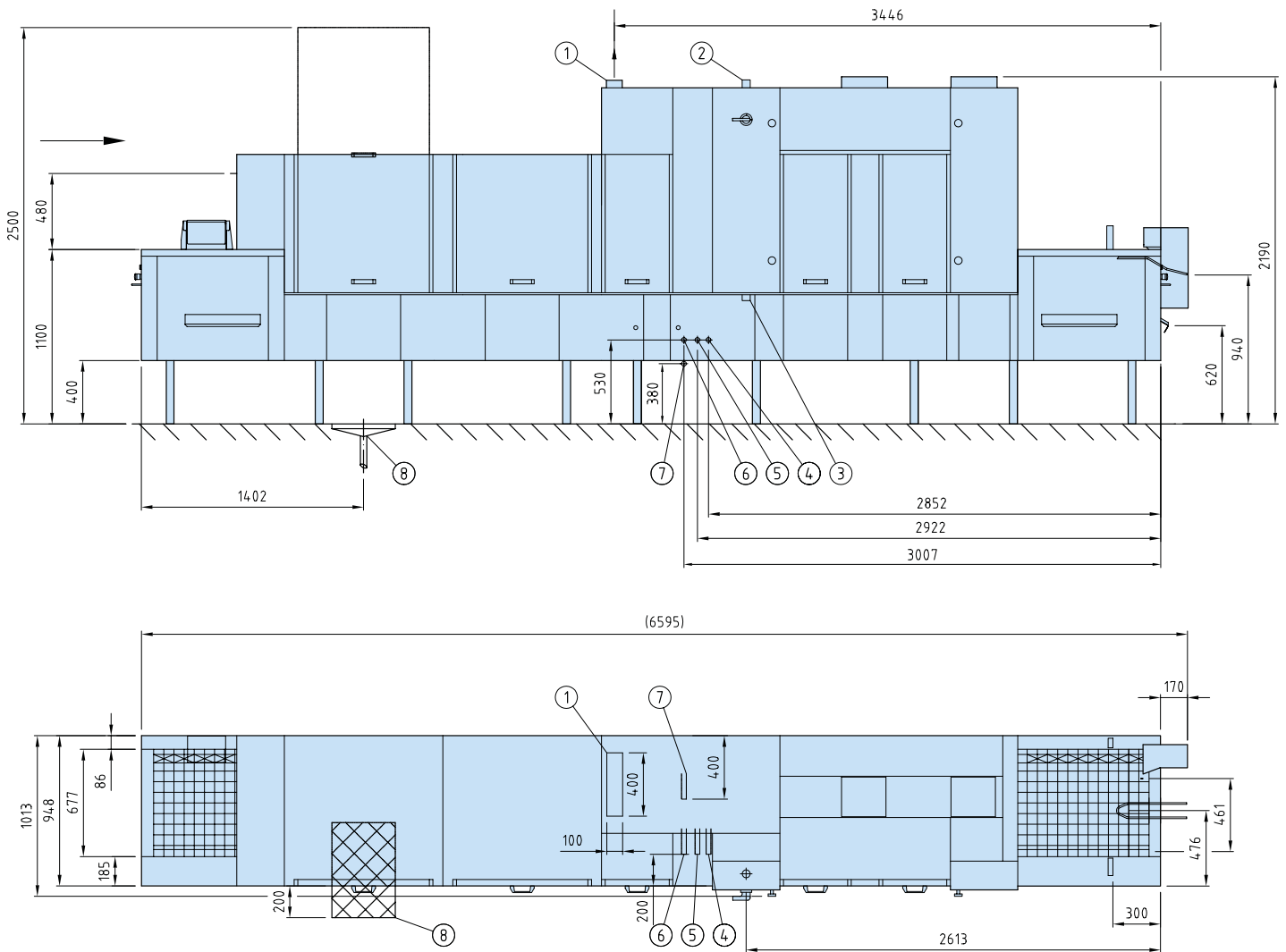
CONNECTION, STEAM-HEATED MACHINE 50-140 kPa	WD-66CT
Total connected power (kW)	17,4
Main fuse 400V 3N~ (A)	35
Max. connection area 400V 3N~ (L1-L3,N,PE) Cu (mm <sup>2</sup> )	35
Steam connection (internal thread)	R 1"
Condensing water connection (internal thread)	R ¾"

CONNECTIONS, WATER AND DRAIN	WD-66CT
Water quality, hardness (°dH)	2-7
Hot water connection 50-65 °C (internal thread)	R ¾"
Cold water connection 5-12 °C (internal thread)	R ¾"
Drain connection, PP pipe (mm)	ø 50
Water capacity, cold water, pressure (kPa)	300-600
Water capacity, cold water, flow (liter/min)	18
Water capacity, hot water, min/max pressure (kPa)	100/600
Floor drain, capacity (litres/sec)	3

SIZE AND WEIGHT FOR TRANSPORT STANDARD, DIVIDED MACHINE *	WD-66CT
Size part 1 (LxBxH) (mm) **	3100x1100x2100
Size part 2 (LxBxH) (mm) **	3800x1100x2100
Weight part 1 (kg) **	950
Weight part 2 (kg) **	580

\* Normal delivery in 2 parts. Option of delivery in more parts.

\*\* Including packaging.



1. Extractor 400x100mm without damper. Air quantity approx. 800 m<sup>3</sup>/hour.
2. Electrical connection from ceiling.
3. Alternative electrical connection from floor.
4. Hot water connection \*
5. Cold water connection \*
6. Steam connection \* (steam-heated machine).  
- Steam pressure 150-250 kPa (Fully steam-heated machine).  
- Steam pressure 50-140 kPa (Electrically heated drying zone).
7. Condensation water connection (steam-heated machine).
8. Floor drain 400x600 mm.

\* Connection from floor or ceiling.

# Wexiödisk<sup>W</sup>

TELEPHONE: +46 470 77 1200 FAX: +46 470 23752 ADDRESS: Mårdvägen 4 SE-352 45 Växjö SWEDEN  
E-MAIL: wexiodisk@wexiodisk.com WEBB: www.wexiodisk.com