



WD-7

HOOD TYPE DISHWASHER

FEATURES

- Unique and flexible washing system. The machines water pressure can be reset quickly and easily between normal and heavily soiled settings
- Robust and reliable design in stainless steel with components that guarantee a durable and reliable operation for many years
- Thanks to the adjustable water pressure you can easily switch between normal and heavily soiled loads.
- The machine has an energy saving heat and sound insulating double-skinned hood
- A good working environment with the unique hood concept
- High levels of hygiene with an automatic cleaning programme and guaranteed rinse temperature by thermal stop system
- Self-drained wash pump
- Large deep tank to protect against foaming
- Easy servicing - the machine is serviced from the front
- Hygiene control – control system with integrated HACCP
- Excellent wash results – with selfdraining washing arms
- Powerful washing pressure with anti-blocking nozzles
- Individual adjustable wash- and rinse times as well as temperatures for each programme
- Inbuilt dosing pump for fine dosage of rinse aid
- Automatic cleaning program

OPTIONS

- Automatic hood
- Autostart for automatic hood
- 230V/1/50Hz
- 230V/3/50Hz
- Marine version
- Detergent pump for liquid detergent
- Panel on left side
- Lockable cabinet for chemicals (not in comb. with break tank or panel on left side)
- Booster heater for cold water connection
- Drain pump
- Separate filling of tank
- Break tank with booster pump (to be used when no external resuction protection is mounted)
- Booster pump connected with WD-PRM7 equipped with automatic hood (In combination with break tank)
- ECO-FLOW condensing unit with heat recovery by the exhausted steam. (cold water connection is required)
- Heat exchanger with heat recovery by the drain water. Not in combination with PRM. (cold water connection is required)



- WEB Tool - For external HACCP documentation

EXTRA EQUIPMENT

- Connection pipe with non-return valve and vacuum valve
- Steam hood with suction connection
- Shelf for chemical storage
- Sideboard (560 x 560 mm)
- Rack for 8 pcs baking plates
- Special rack for containers

TECHNICAL DATA	WD-7
Wash pump (kW)	1,1
Booster heater (kW)	9/12*
Tank heater (kW)	1,8
Tank volume (litres)	50
Weight, machine in operation (kg)	170
Enclosure class (IP)	45

* 12 kW booster heater is optional.

CAPACITY AND OPERATING DATA	WD-7
Total washing time P1 (min)	1,2**
Total washing time P2 (min)	1,7**
Total washing time P3 (min)	3,2**
Max. capacity, baskets/hour (no.)	50
Water consumption rinsing/programme (litres)	2,5-4***
Energy consumption (% of connected power)	70-90%
Sound level (dB(A))*	62/60

* Measured 1 metre from the side of the machine.

** Factory setting. The washing time can be adjusted.

*** Applies under ideal conditions. The water consumption depends on local conditions. An exact adjustment is made during installation.

CONNECTION, MACHINE	WD-7
Total connected power (kW)	10,1/13,1*
Main fuse 400V 3N~ (A) **	16/25*
Max. connection area 400-415V 3N~ (L1-L3,N,PE) Cu (mm2) ***	2,5

* With 12 kW booster heater (optional).

** Other voltage on request.

*** Cable 3 m H07RN-F is included.

Wexiödisk

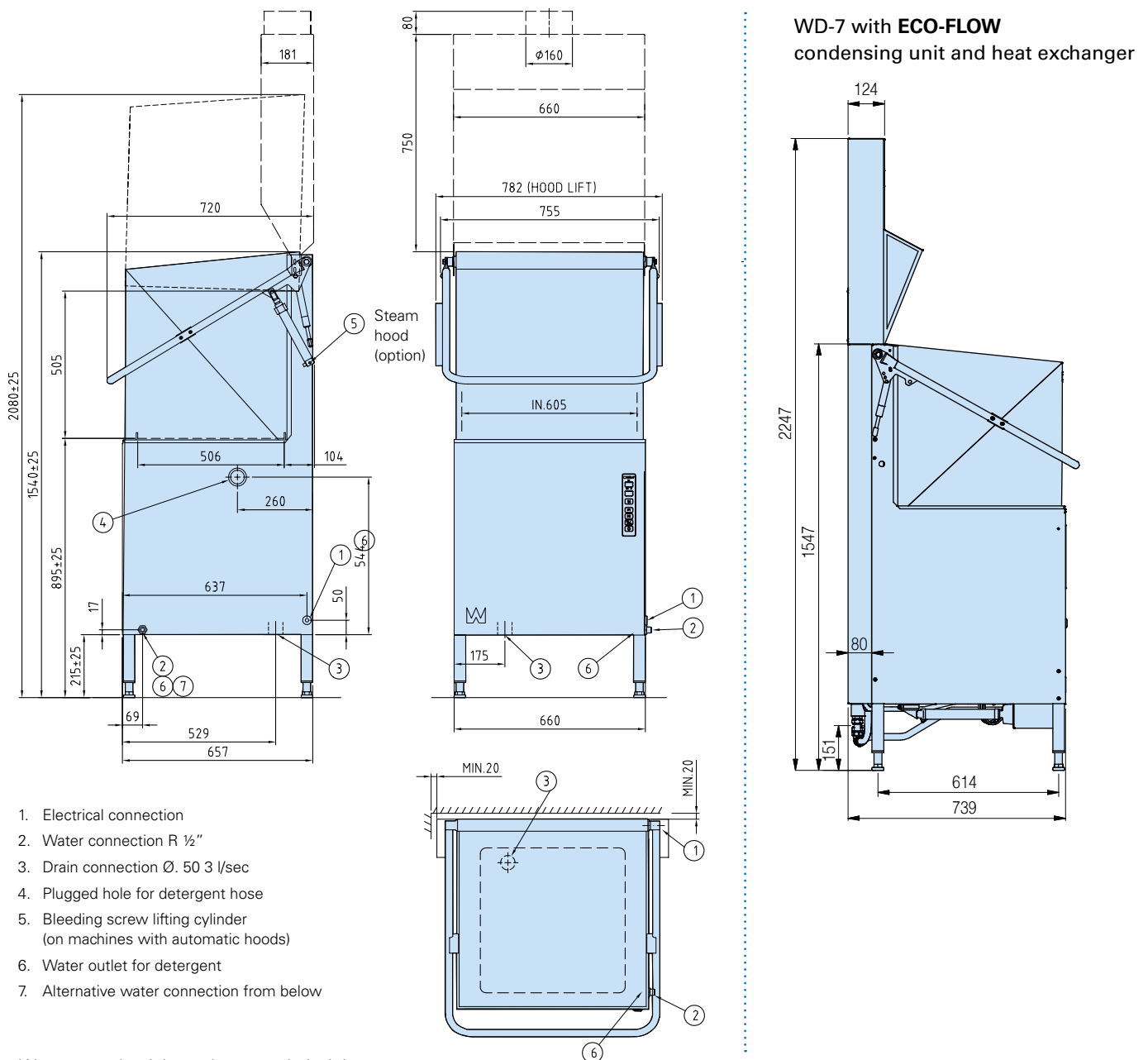
WATER, DRAIN AND VENTILATION CONNECTIONS	WD-7
Water quality, hardness (°dH)	2 - 7
Water connection 5-65°C (external thread) *	R ½"
Drain connection, PP pipe (ø mm.)	50
Water capacity, min/max pressure (kPa)	180**
Water capacity, flow (litres/min)	18
Water capacity hood lift, pressure (kPa)	300**
Floor drain, capacity (litres/sec)	3
Heat load to the room (total, sensible, latent) (kW)	2,3/1,7/0,6

* If colder water than 55°C a 12 kW booster heater is recommended.

** If pressure/flow is lower the machine should be equipped with a break tank.

SIZE AND WEIGHT FOR TRANSPORTATION	WD-7
Size, LxWxH (mm.) *	765x805x1650
Weight (kg) *	125

* Packaging included



We reserve the right to change technical data.

Wexiödisk

TELEPHONE: +46 470 77 1200 FAX: +46 470 23752 ADDRESS: Mårdvägen 4 SE-352 45 Växjö SWEDEN
E-MAIL: wexiodisk@wexiodisk.com WEBB: www.wexiodisk.com