

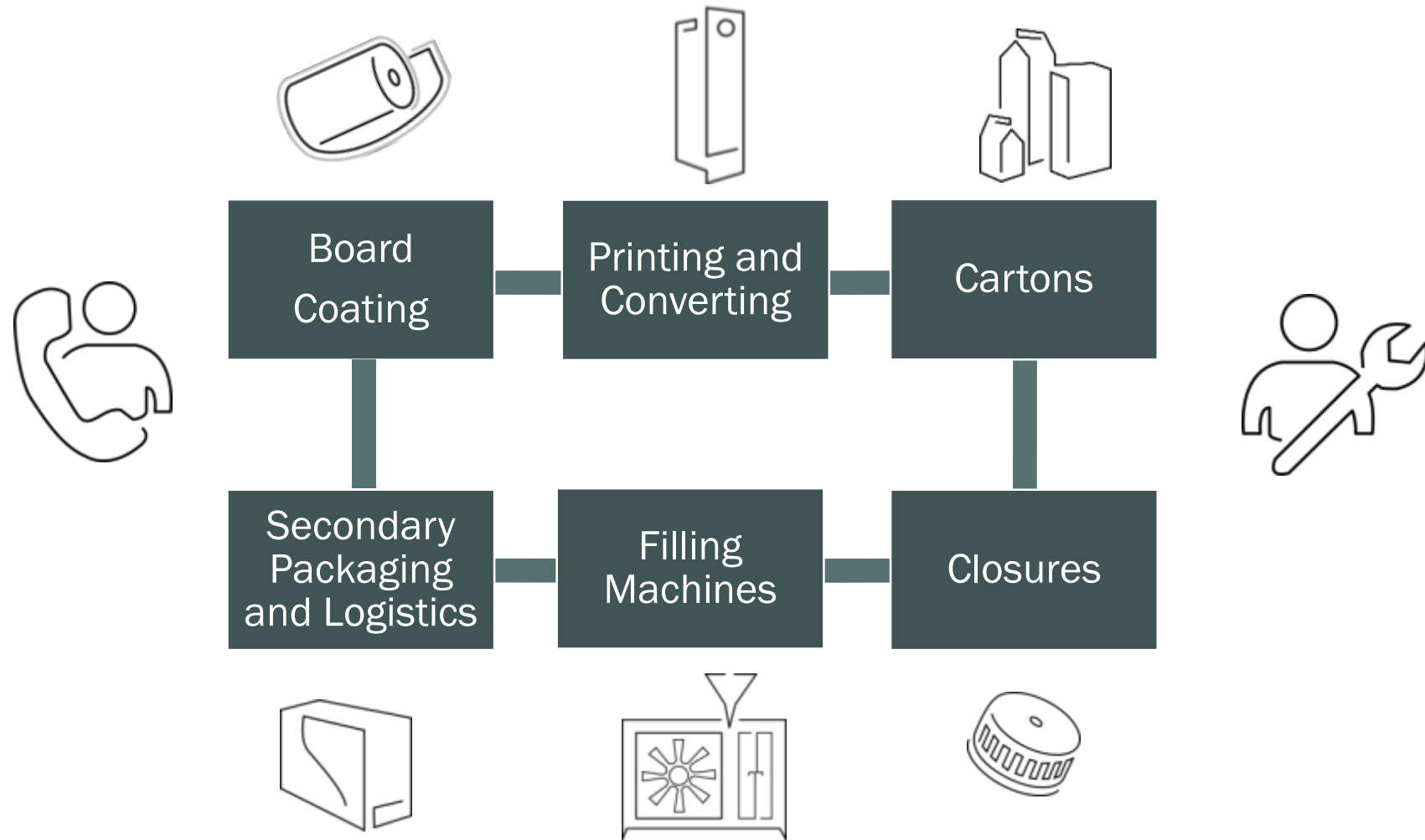
# Analytics at Elopak

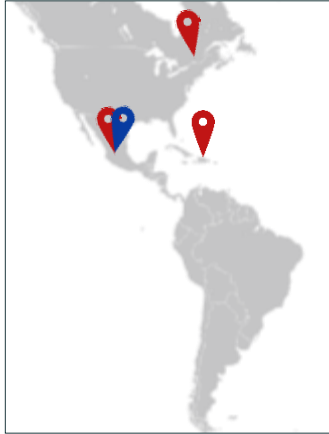
Yngvar Zahl, BI Team Lead

SBN ANALYTICS FUNCTION DAY, 10.06.2020



Elopak supplies parts or complete systems of the Pure-Pak® packaging solution and Roll Fed aseptic packaging material.





**Corporate locations**

- Headquarters Oslo, Norway
- Corporate Offices with Technology Center Spikkestad, Norway

**Manufacturing Plants**

- Denmark – Coating & Converting, Roll Fed
- The Netherlands – (2 plants) Coating & Converting
- Ukraine – Roll Fed
- Russia – Converting
- Canada – Converting

**Manufacturing Plants – Joint Ventures**

- Saudi Arabia – Coating & Converting
- Mexico – Coating & Converting
- Dominican Republic - Converting

**Filling Machine Manufacturing**

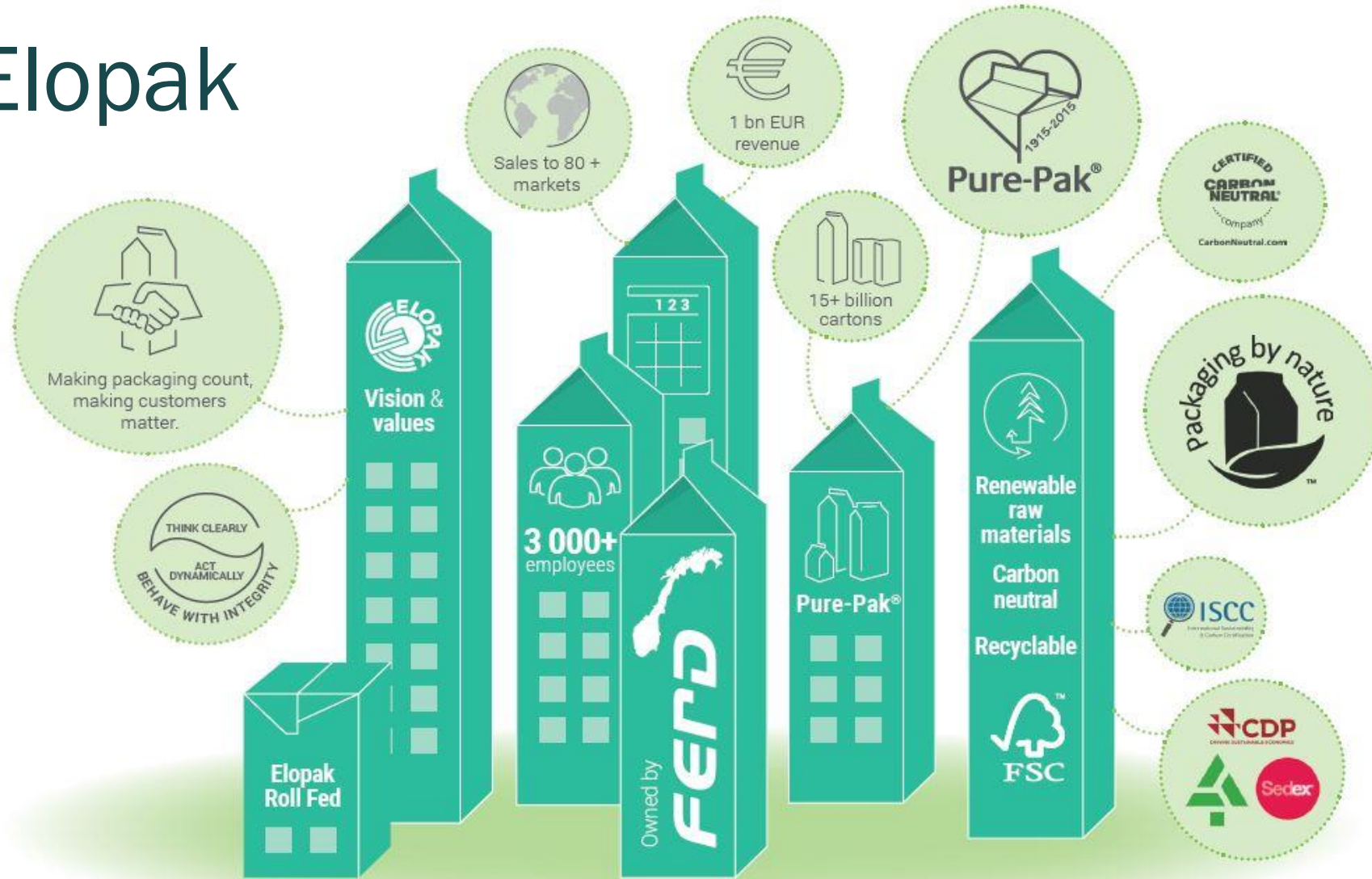
- Germany

**Pure-Pak® Associates**

- Japan
- Australia
- South Africa

Machine production   Coating plant   Roll Fed production   Converting plant (incl JVs)

# About Elopak

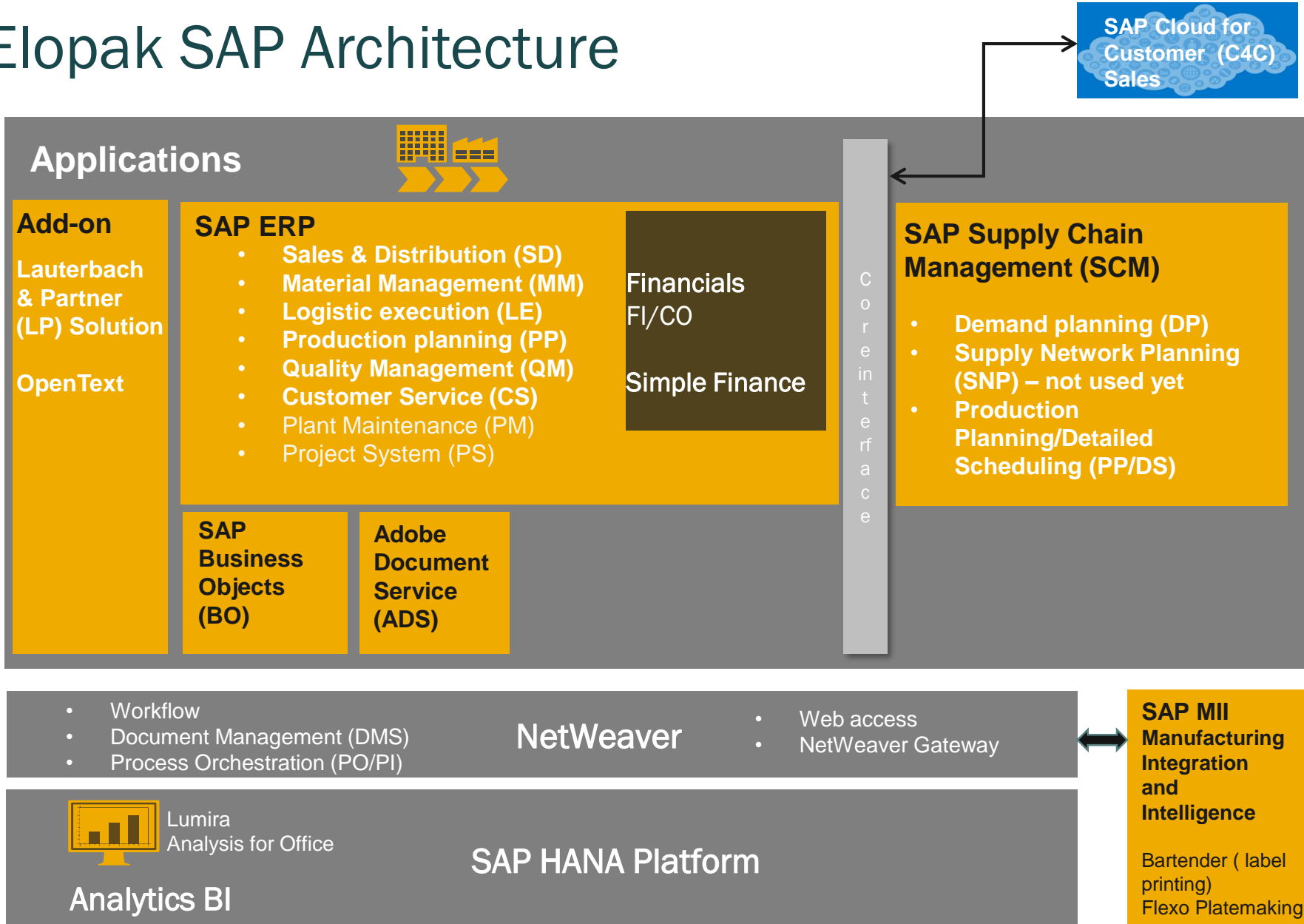


\*inclusive joint ventures

# ERP/Reporting History

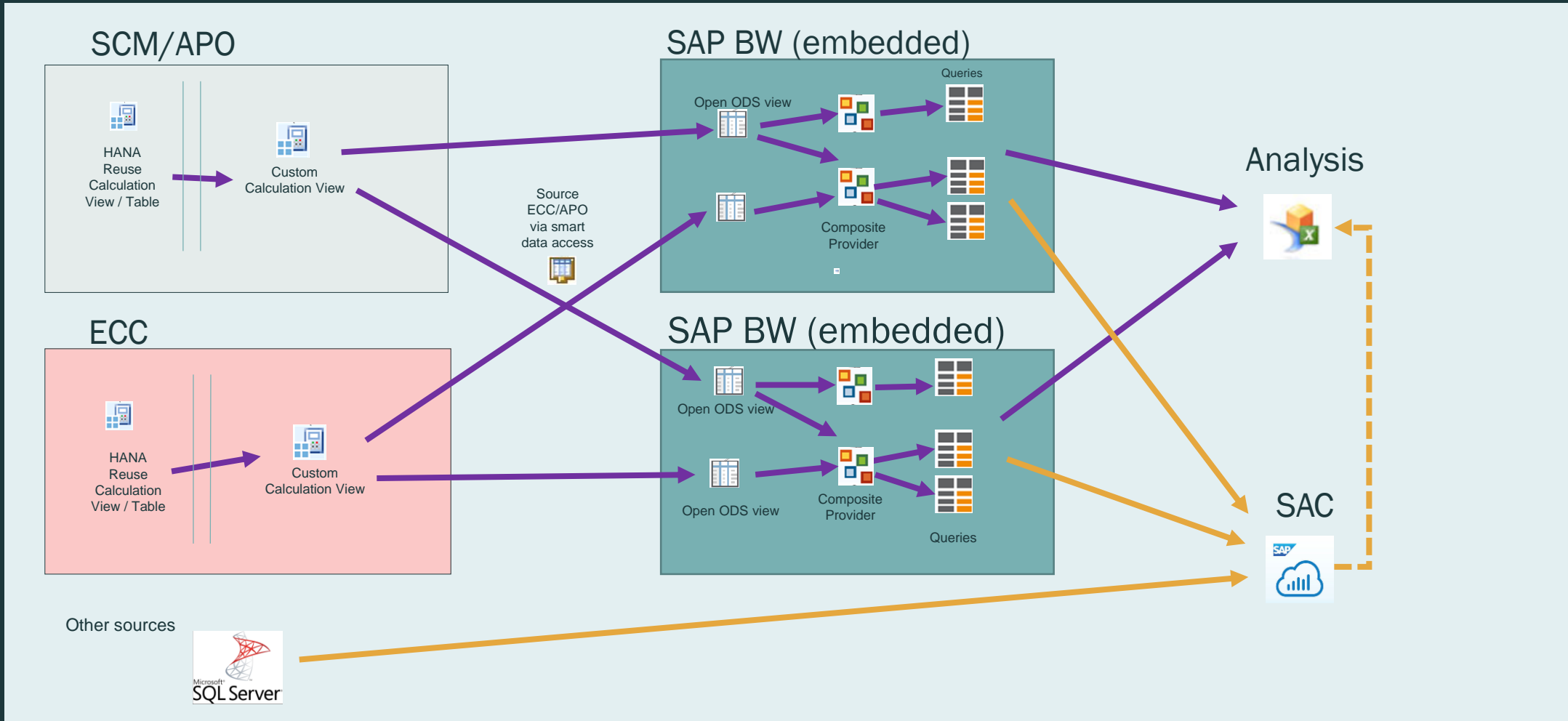
- Multiple ERPs / instances
- Local reporting tools and resources
- Corporate reporting tedious and inaccurate

# Elopak SAP Architecture



SAP products	Version	SP
SAP NETWEAVER	7.50	14
SAP ERP	6.0	31
SAP HANA Platform	1.00	122.29
Analysis for Office	2.8	
BO / BI Platform	4.2	

# SAP BI Architecture (incl SAC)



# SAP BI Architecture «status»

- ▶ BW (embedded) on HANA
  - + Virtual access, no BW persistence
  - + Short «time-to-market»
  - Embedded -> stuck together with ECC versions/upgrades
  - Limitations in usage with other sources
  
- ▶ Analysis for Office / BI Launchpad(BO)
  - + Real-time reporting
  - + Easy-to-use
  
- ▶ Lumira (not in use/offered)
  
- ▶ SAC (pilot)



# SAP BI Content & Organization «status»

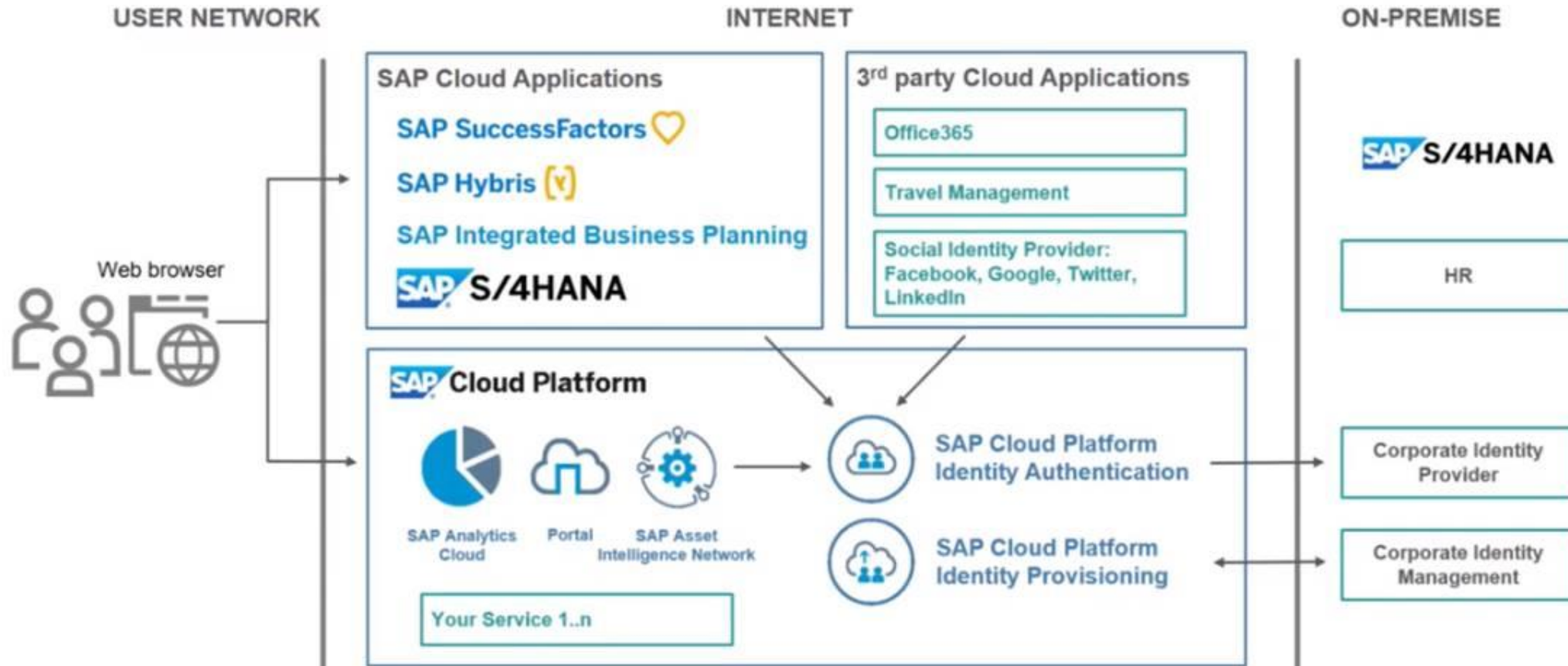
- ▶ Content for all business areas
  - ACDOCA / Financial postings / Sales
  - Shipments / Deliveries
  - Production output
  - Purchasing
  - Master Data QA
  
- ▶ Challenging BI organization build-up
  - Focus on ongoing rollouts, adding business units, improvement processes
  - Organization is stretched between projects and operation
  - Reporting/BI focus more on daily business support rather than analytics
  - BI ownership
  - Focus on reducing project cost
  - SAP is still a project...
  
- ▶ Growing interest for corporate reports, dashboards, visualizations

# SAC (pilot)

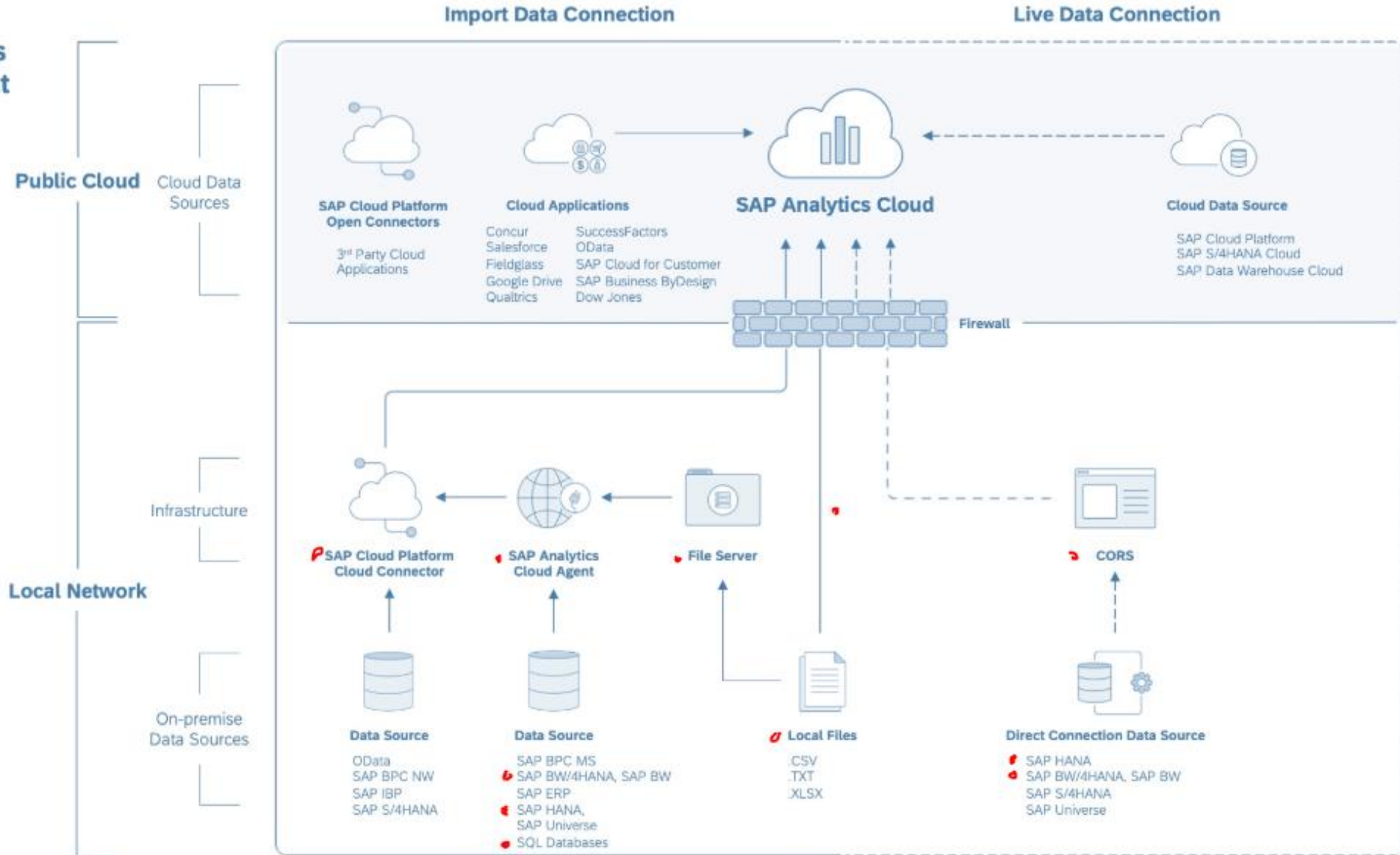
- ▶ SAP test tenant (Q2/Q3-19)
- ▶ Pilot stories to be published to business users (Sales, Controlling, HR, Production, W&D)
- ▶ Positives
  - Visualizations
  - Releases/new features
  - LIVE connection models/stories
  - Performance
  - SSO setup
  - Connection setup
  - Data model mgmt. (import)
- ▶ Production subscription (Dec-19)
- ▶ Limited number of users to be onboarded for pilot evaluation
- ▶ Negatives
  - Immature
  - Modelling capabilities
  - Modelling changes
  - Self service too complex?
  - Limitations due to BW version
  - Startup support
  - License model? (concurrent)

# Overview

## A central service for SAP and non-SAP applications



Data Connections Environment



# SAP BI Roadmap - Where should we go?

- ▶ S/4 upgrade sometime in the future
  - What to wait for, and what to do in the meantime?
- ▶ BW embedded or BW standalone?
- ▶ Data Warehouse Cloud
  - Is this the solution to data modelling?
- ▶ Launchpad vs SAC Hub/Catalog
  - How to handle Analysis workbooks?
- ▶ CDS vs Calculation views
- ▶ SAC rollout

Packaging by  
Nature™  
is what we  
stand for

Pure-Pak® is  
the natural  
solution