



bouvet



SBN Webinar

The SAP Flower Power – Fiori in your business processes

11. Juni 2021 – 09:00- 11:00



Agenda

- ❖ Key facts on Bouvet
- ❖ Introduction to Fiori
- ❖ Fiori in a value mapping perspective for S/4

- ❖ Demoing a linear business process within a basic end-to-end scenario

- ❖ Q&A

Bouvet as your partner *with "flower power" ++*

**Dette er
BOUVET**

Vi leverer IT-tjenester
innen utvikling,
forretningsadministrasjon og
applikasjonsadministrasjon

Vi bistår
virksomheter med
gode opplevelser for
deres ansatte
og kunder

Vi er et norsk
konsulentselskap, med
14 kontorer i Norge og
Sverige med over 1600
ansatte. Vi er også notert
på Oslo børs.

Frihet

Delings-
kultur

Jord-
nærhet

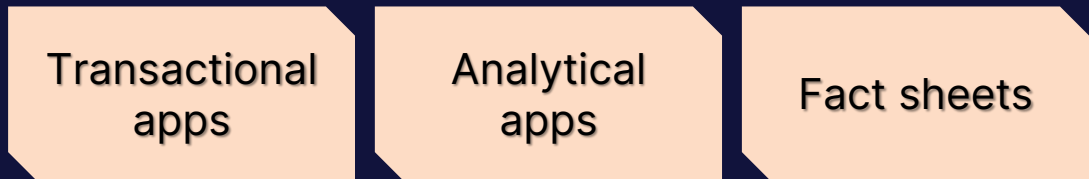
Troverdi-
ghet

Entusi-
asme

Verdi-
ene
våre

What is Fiori?

- ❖ **Fiori** is a (UX) design concept
- ❖ **SAPUI5** is a library framework
 - ❖ When you build (custom) **UI5** Apps that do not adhere to the **SAP Fiori** design guidelines, they are called custom **UI5** Apps
 - ❖ When you build **UI5** apps that adhere to the **SAP Fiori** design guidelines, they are called **Fiori** Apps
- ❖ **SAP Fiori** is a set of **apps (1000+)**, written by **SAP**, that address the most broadly and frequently used **SAP** functions, such as:
 - ❖ Workflow approvals
 - ❖ Information lookups
 - ❖ Self-service tasks
 - ❖ etc.
- ❖ The “**3rd generation**” of Fiori apps is on the market now - more and more truly new apps (with add. functionality instead of “SAP GUI replications”)
- ❖ Fiori is used by more than **4.000 customers** today (with the majority sitting in the US)



What is SAP Fiori Launchpad?

- ❖ The SAP Fiori Launchpad is a shell that hosts SAP Fiori apps, and provides the apps with services such as navigation, personalization, embedded support, and application configuration.
- ❖ It is the entry point to SAP Fiori apps on mobile and desktop devices. The launchpad displays a home page with tiles.



Can easily be customised to **propriety requirements** (as for ex. own background / design concept)



Apps organisation through **Fiori groups** and **catalogues** setup
=> linked to **Business roles**



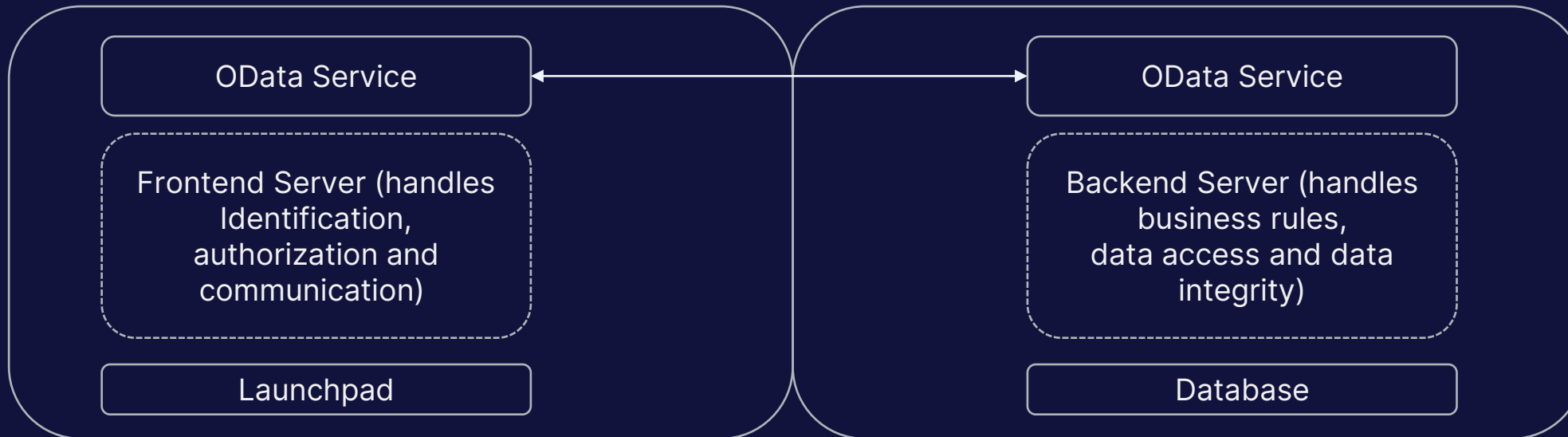
User empowerment and coding-free adaptation (e.g. KPIs, User Tiles, CoPilot etc.)

What is Fiori - basic architecture

Front-End Components

(Either a separate Gateway Server or a Gateway component on Back-End Server)

Back-End Components



Serving Web Application (Fiori App/UI5 App/HMTL5 App) and O-data Services (Or any other API service if wanted) and exposes the O-data services.

Actually handles the content of the O-data service, handles the business logic behind the application and handles the data(base).



Fiori in a value-mapping perspective for S/4 HANA



1. Effective and modern user interface (UX) for most of SAP's applications & systems
2. Flexible, intuitive and easily adaptable to personal user preferences
3. They provide simple and easy-to-use access across desktops, tablets, and smartphones



...of SAP Fiori Launchpad:

- ❖ Role-based UX
- ❖ Your homepage with groups of Fiori Apps specially chosen for your tasks
- ❖ Easier to get started, less of what you don't need
- ❖ Fiori default values
- ❖ Enterprise search
- ❖ Notifications
- ❖ Fiori personalization

Fiori in a value-mapping perspective for S/4 HANA

Personalized

Effective and modern user interface (UX) for most of SAP's applications & systems

Well integrated

2. Flexible, intuitive and easily adaptable to personal user preferences

3. They provide simple and easy-to-use access on desktops, tablets, and smartphones

Drag-n-Drop

The essential, easily "at hand"



...of SAP Fiori Launchpad:

- ❖ Role-based UX
- ❖ Your homepage with groups of Fiori Apps specially chosen for your tasks
- ❖ Easier to get started, less of what you don't need
- ❖ Fiori default values
- ❖ Enterprise search
- ❖ Notifications
- ❖ Fiori personalization

Time spent & Flow

Bouvet's «own» S/4 Demo system – How?



Organizational and configurational setup

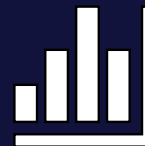
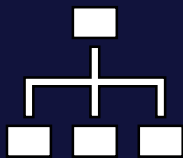
- Based on Norwegian Template company code (NO01), with “finalized” config for basic process scenarios spanning Purchases / Sales and Finance / Controlling
- Fiori setup and selection of latest apps to be included in demo
- Optimize system performance to demo advantages from HANA and web-based applications

Data setup

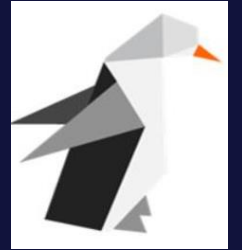
- Find an interesting “story” as attention-catcher and prepare demo data accordingly
- Prepare sufficient master data

Documentation and Maintenance

- Document scripts and stories so that the demo setup can easily be re-used within the team
- Continuously maintain and develop the Demo database and story. Next areas:
 - EWM “Extended Warehouse Management”
 - PM “Plant Maintenance”
 - PCFA “Product Carbon Footprint Analytics”



MVP Scenario w/ «Pinguinbiler AS»



bouvet

OSLO plant

Customers:



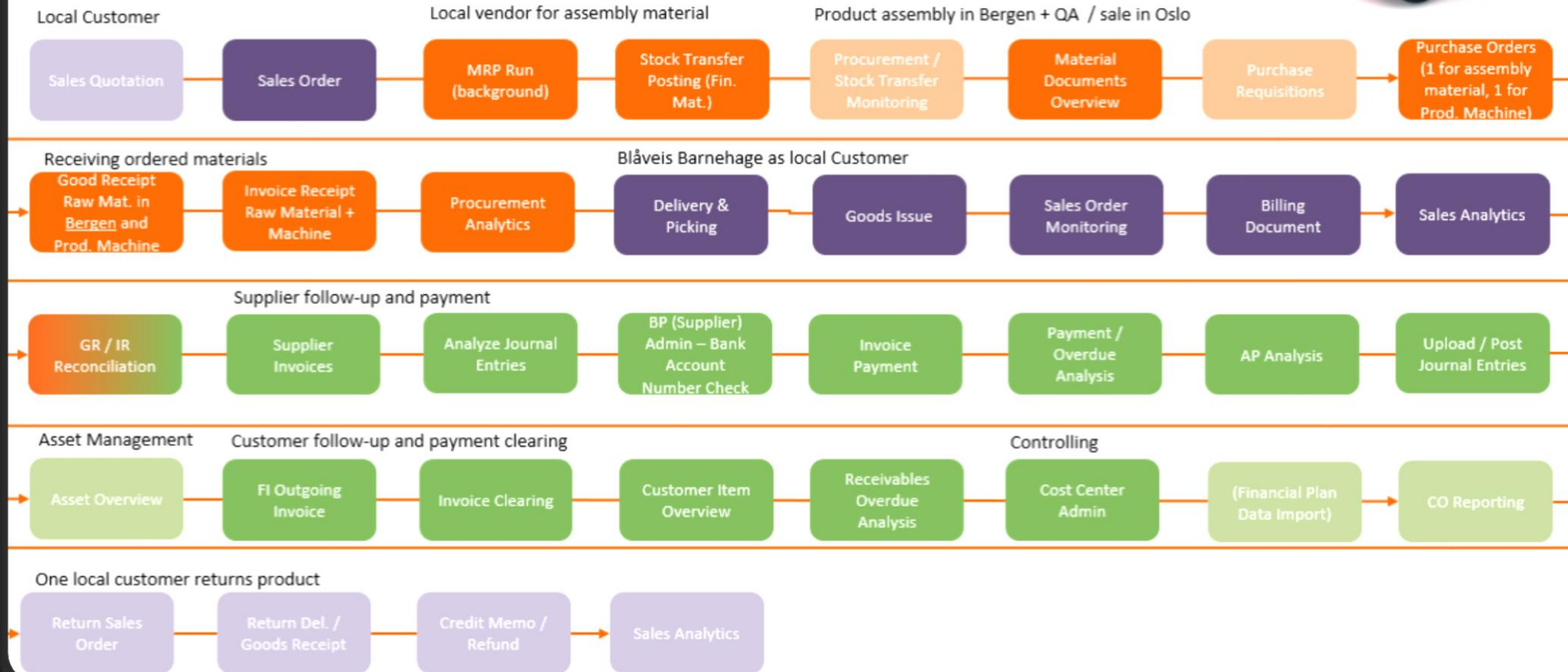
BERGEN plant

Vendors:



SBN Demo

Linear Demo Process – MVP Vers. (SBN)



Thanks for your attention!



Contact us!

Are you interested in more details, have specific thoughts or questions? Or are you perhaps interested in more detailed scenarios for you / your customer? Reach out to us at Bouvet, we would be happy to investigate further!



Susanne Åberg

Avdelingsleder, Applikasjon & Prosess

Mobil +47 412 66 416

susanne.aberg@bouvet.no



Roland zum Busch

Seniorkonsulent, Applikasjon & Prosess

Mobil +47 946 40 973

roland.busch@bouvet.no

