



Get to the Summit with
RISE

RISE PCE with SAP S/4HANA

RISE with SAP S/4HANA, private cloud edition – **Key benefits and values**



Business Benefits

- **Full scope** of SAP S/4HANA scope incl. LOB and industry processes, supporting 25 industries
- Wide range of **partner add-ons allowed**
- **64 Country/Region versions** in 39 languages
- **SAP concierge service** to simplify move to the cloud



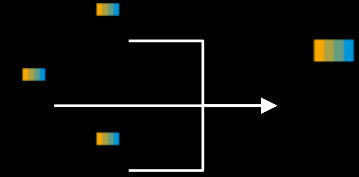
Strategic Benefits

- **Simplified system conversions** and brownfield migrations into the cloud
- Application and technical operations from one vendor
- **Safeguarded** prior investments into new SAP systems



Technical Benefits

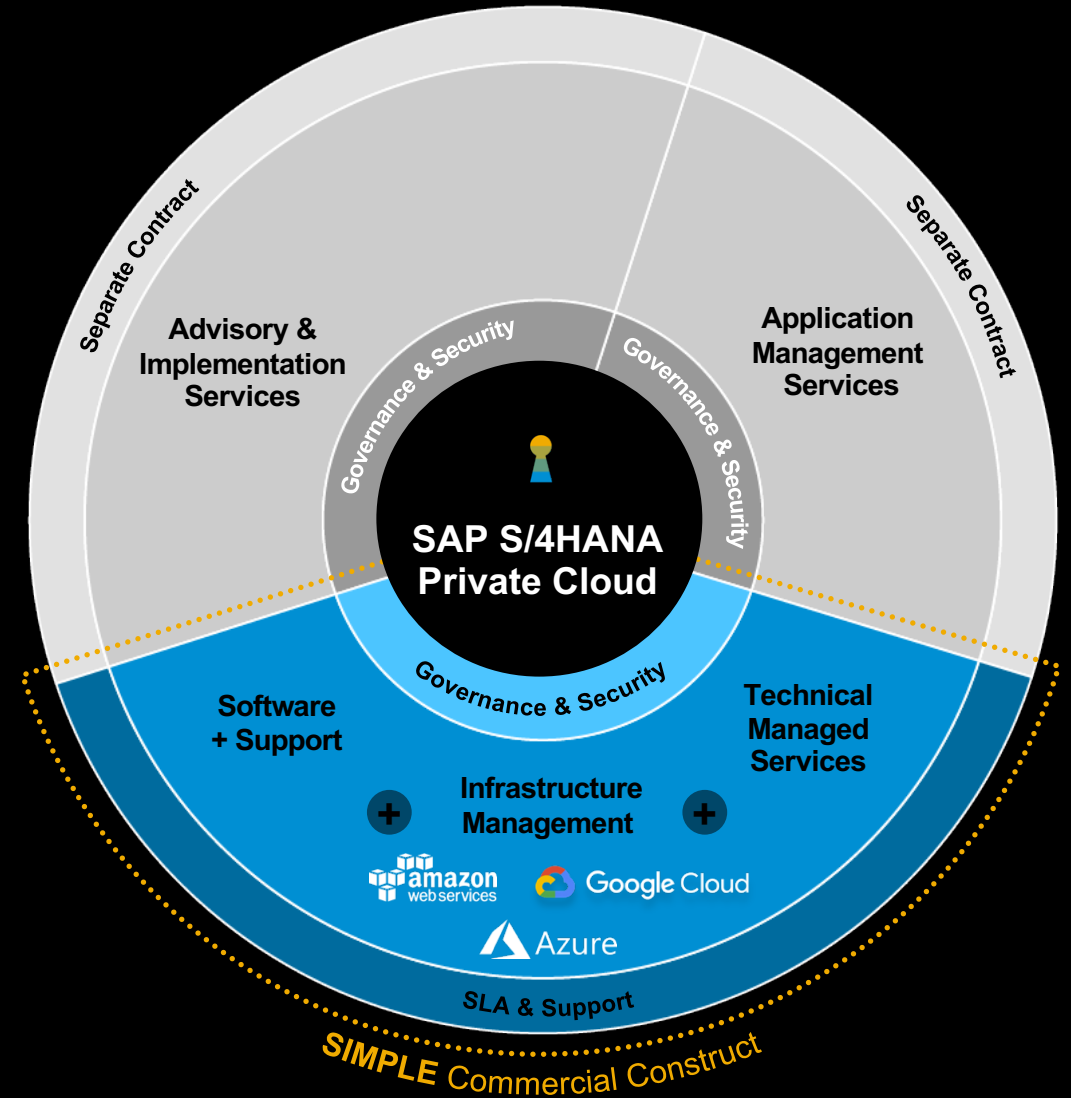
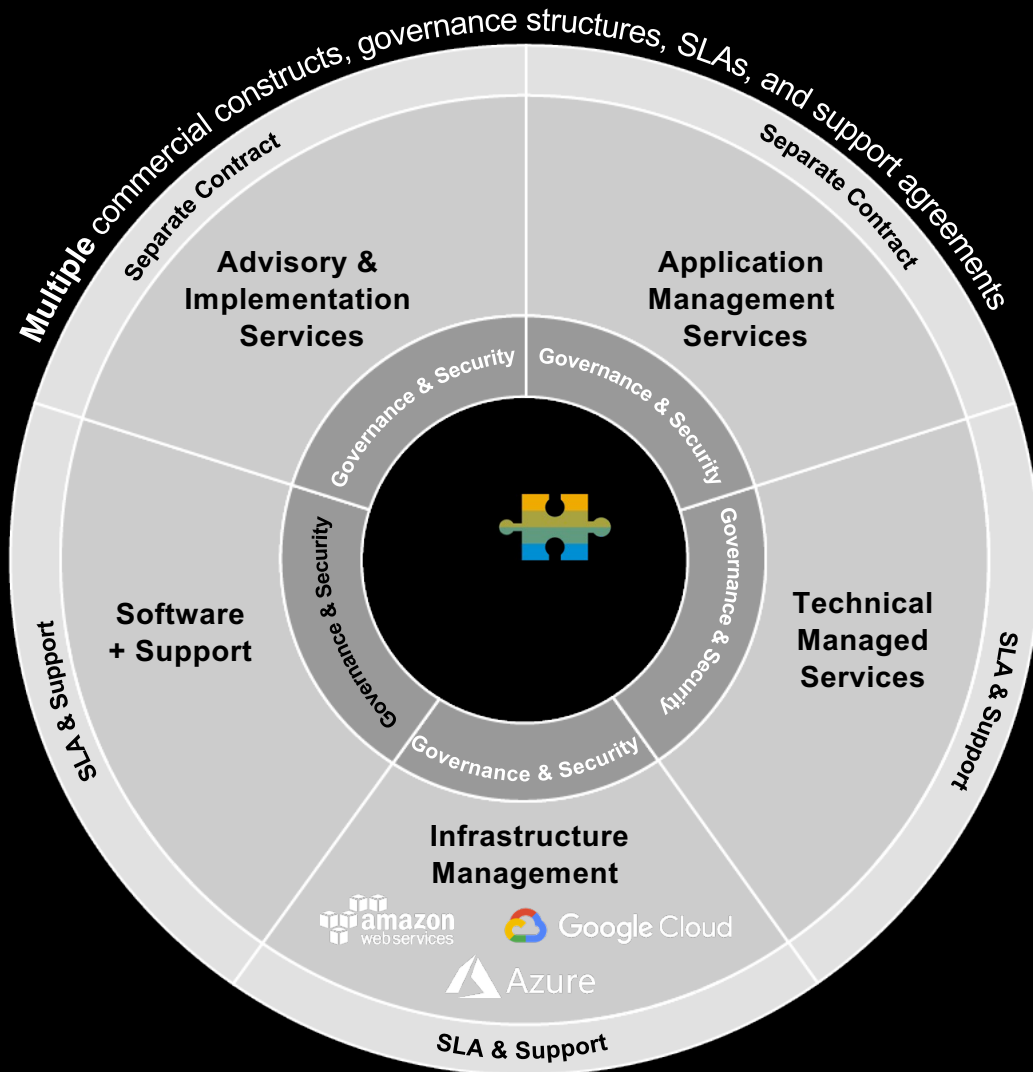
- Access to S/4HANA **Extensibility Framework**
- Side-by-side and **In-App** extensions
- Code enhancement & code modifications **allowed**
- **Expert configuration** (full IMG access)
- **Scalable** platform



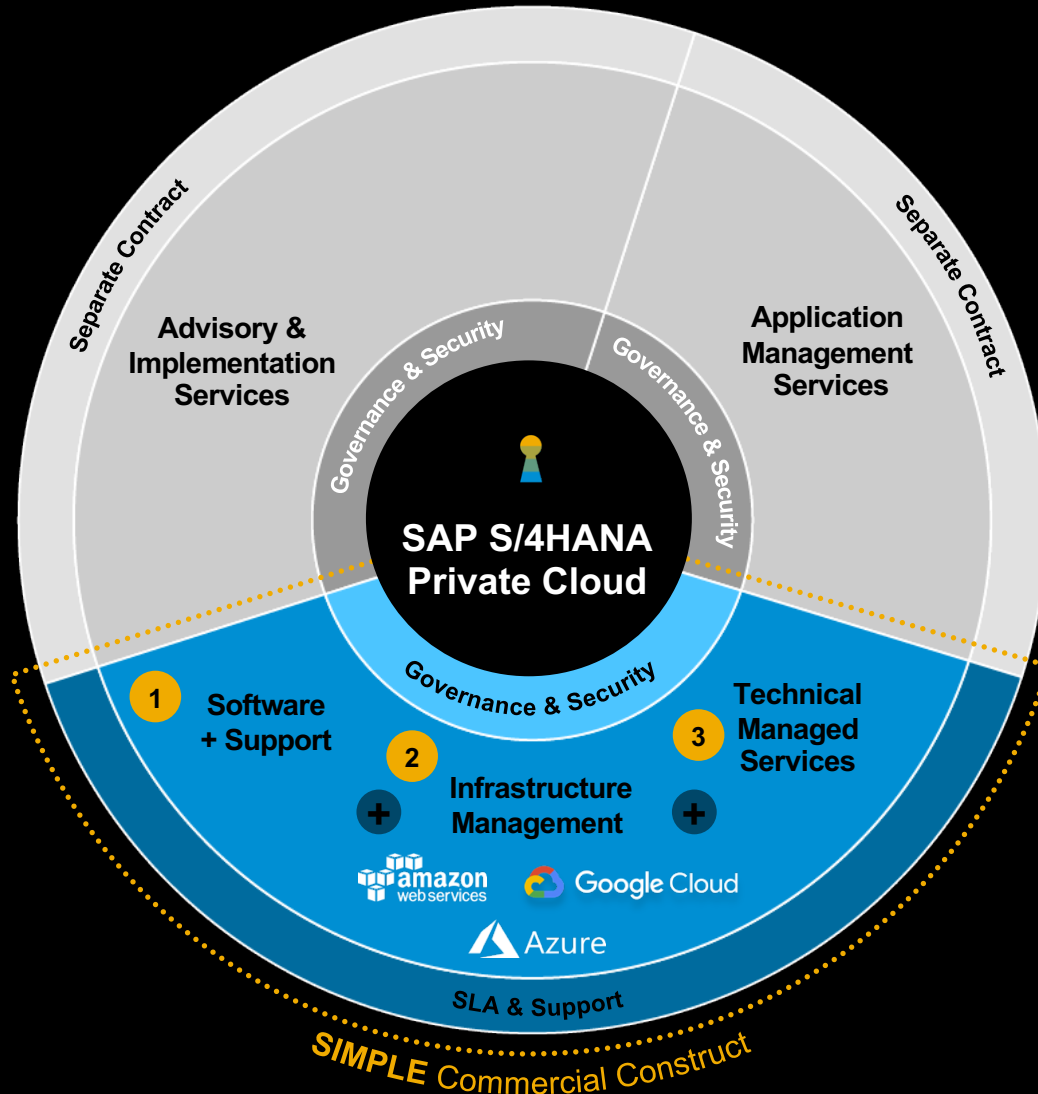
Operational Benefits

- **Resilience and TCO** of hyperscaler infrastructure
- **Technical operations** done by SAP
- **Upgrade installation** on customer request

One Commercial Construct: ERP, Infrastructure, and Technical Services



SAP S/4HANA, private cloud edition: SAP-provided scope



1 Functional Scope:

- SAP Software + Enterprise Support based on SAP S/4HANA Enterprise Management (On-premise)
- Cloud Connectors: SAP Ariba, SAP SuccessFactors, SAP Concur, SAP IBP
- SAP Adobe Document Services for printing
- Available: SAP S/4HANA LoB & Industry Add-Ons (optional), Beyond S/4HANA Solutions
- Wide set of partner add-ons are allowed:
 - SAP SOLEX solutions (SAP supported)
 - SAP S/4HANA partner certified solutions (customer supported)
 - ABAP-only add-ons (customer supported)

2 Infrastructure Management:

- Low TCO
- Highest Flexibility
- Best scalability option
- Availability
- Data Center [Availability](#)

3 Technical Managed Services:

- High Availability & Business Continuity
- SLA: 99,7% for productive system, 95% for non-productive systems
- Services described by Roles & Responsibilities matrix
- Wide range of foundational technical service delivery
- Technical System Operations
- Technical Landscape Deployment
- Technical Upgrade installation
- Continuous Service planning & review
- 24*7 service delivery for PRD, 24*5 for non-PRD
- Setup of RFC connections

Additional Technical “Fixed Scope & Price” Packages available by SAP (CAS) Cloud Application Services (**Optional**)

- Release Version Upgrade
- Application Operations
- Application Monitoring
- Regression Testing
- Data Volume Optimization
- Data Quality Optimization
- Cloud Integration Testing

SAP S/4HANA: The right fit for every organization

ONE Data Model • ONE Semantic • ONE User Experience

As a Service



SAP S/4HANA Public Cloud

Complete, modern, SaaS ERP

Our strategic choice for companies ready to embrace the future of ERP with a **new implementation and pre-defined processes**



SAP S/4HANA Private Cloud

Cloud value, traditional flexibility & full scope

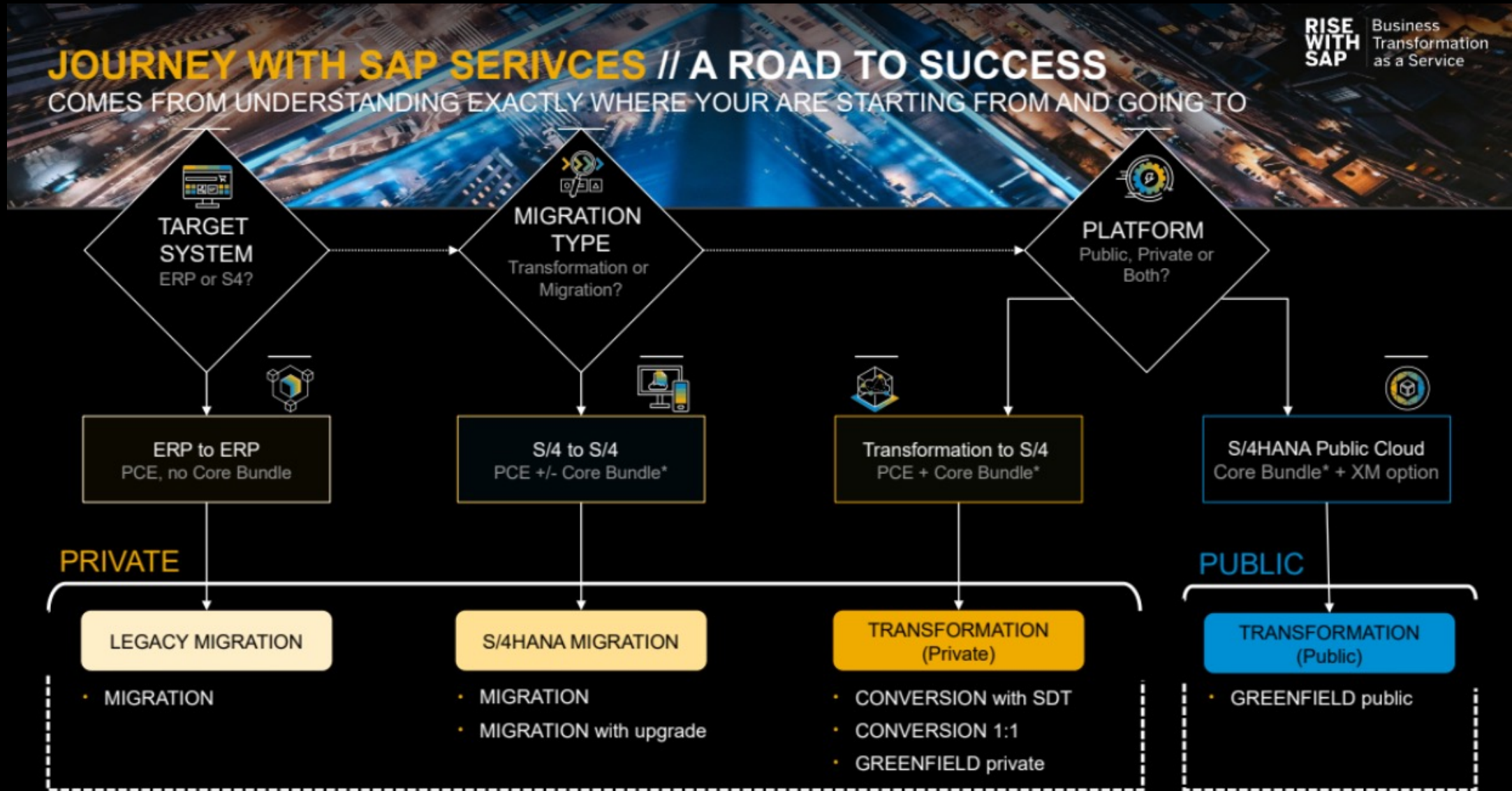
Designed to provide innovation and cloud value while allowing customers to retain their investments by **converting their existing system(s)**

What to think about when moving to RISE

Parties involved:

- Company
 - Internal resources from Business, IT, Management, Security, Legal
- SAP
- Hyperscaler
- Current hosting partner
- Preferred service partner or SAP reseller
 - Has the preferred partner the required certifications for RISE?
- Others?

RISE Roadmap – What is the most likely RISE Roadmap path?



What to think about when moving to RISE - II

Timeline

- What is the most likely timeline for a RISE migration?
 - (This estimate will provide guidelines for the complete Roadmap)

Prepare current installation to minimize Risk and Effort in a transition

- Readiness reports and following actions
- Data Management
 - Archiving, Decommission, Master Data Management
- Identify and decide what should happen with custom code

What to think about when moving to RISE - III

Current contract, Bill of Material, Use rights

- Are there any special clauses and user rights in the current contract?
- Will the current Bill of Material (BoM) cover the needs going forward
 - Map the current BoM to the RISE BoM
 - Are there SAP functionality/products that is not supported by RISE?
 - Will the functionality/products be needed going forward?
 - If yes, can the run on native Hyperscaler?
- Is there embedded functionality from 3rd party SAP vendors in the ERP system(s)?
 - If yes, is the licenses purchased via SAP or direct from the vendor
- As early as possible – going through a drafted contract to identify unclear topics

Move to Rise

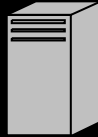
ERP Production ECC



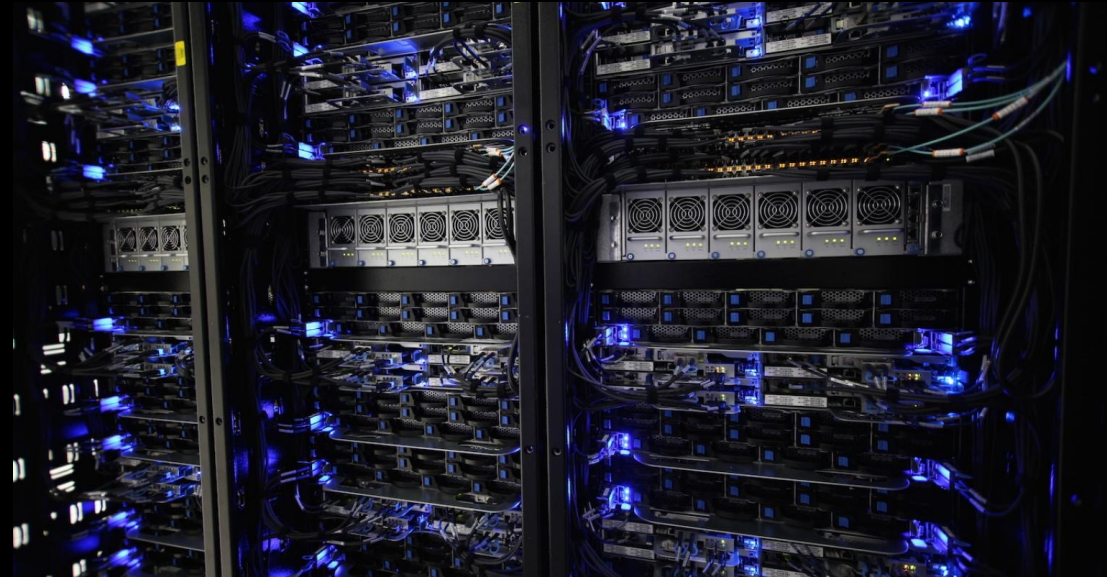
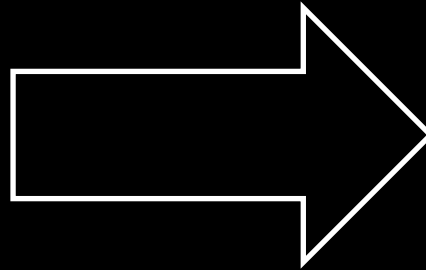
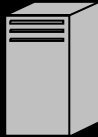
ERP Test ECC



ERP Dev. ECC



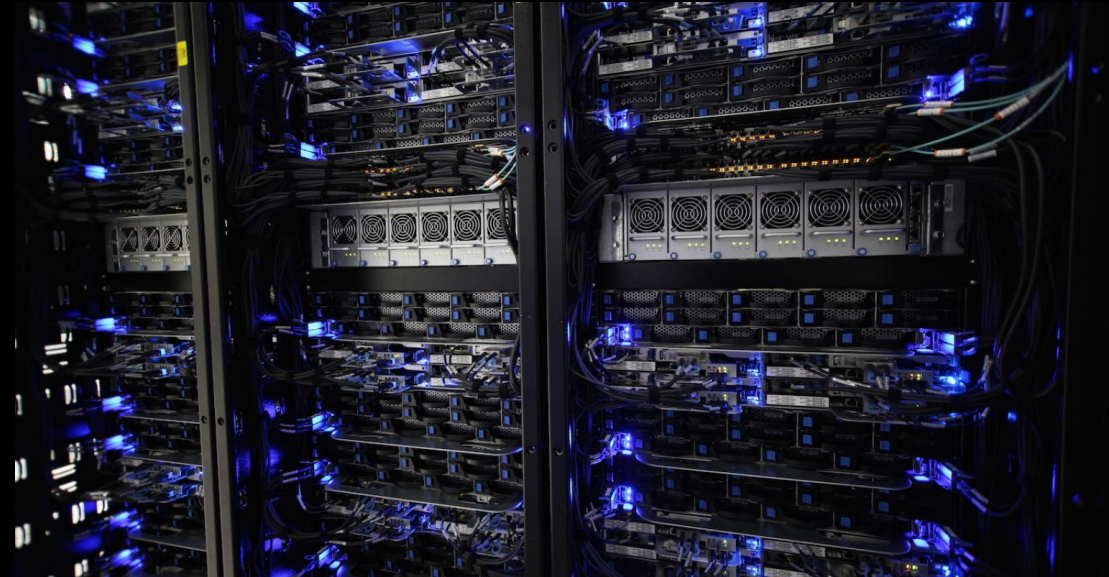
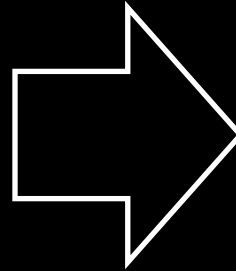
ERP Sandbox ECC



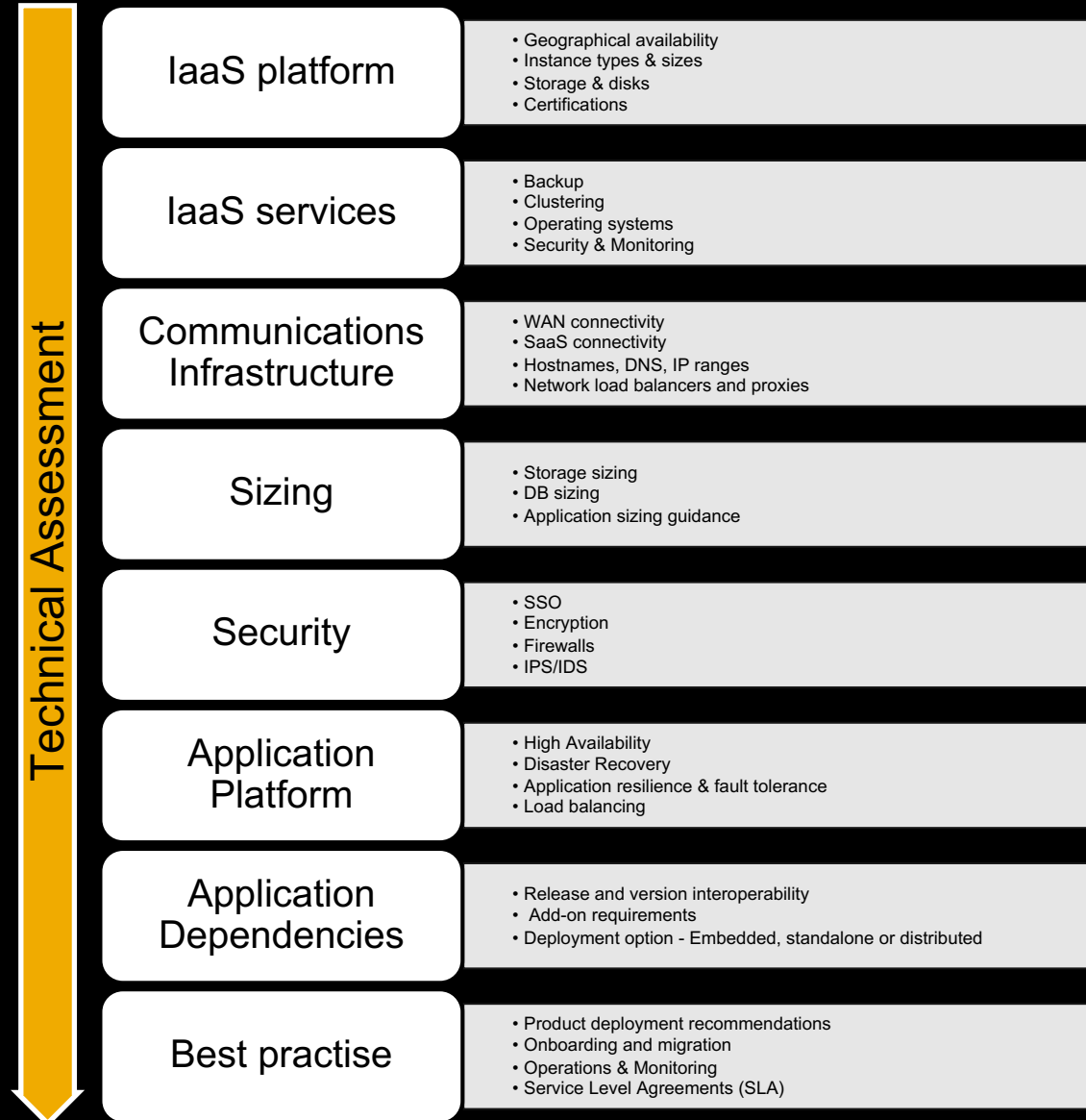
Move to Rise - Reality

ERP Production ECC
ERP Test ECC
ERP Dev. ECC
ERP Sandbox ECC
BW Production BW
BW Production BW
BW Test BW
BW Development BW & BO
BW Sandbox BW
Global Batch Trace 3.0 Production
Global Batch Trace 3.0 Test
Global Batch Trace 3.0 Development
SAP Gateway Production
SAP Gateway Test
SAP Gateway Development
GRC - Access Control Production
GRC - Access Control Test
GRC - Access Control Development
Identity Management Production
Identity Management Test
Identity Management Development
PO Production
PO Test
PO Development
SCM/EWM Production
SCM/EWM Test
SCM/EWM Development
SCM/EWM Sandbox
Solution Manager Production
TREX Production
Solution Manager, TREX Development
Solution Manager 7.2 SP10 Production

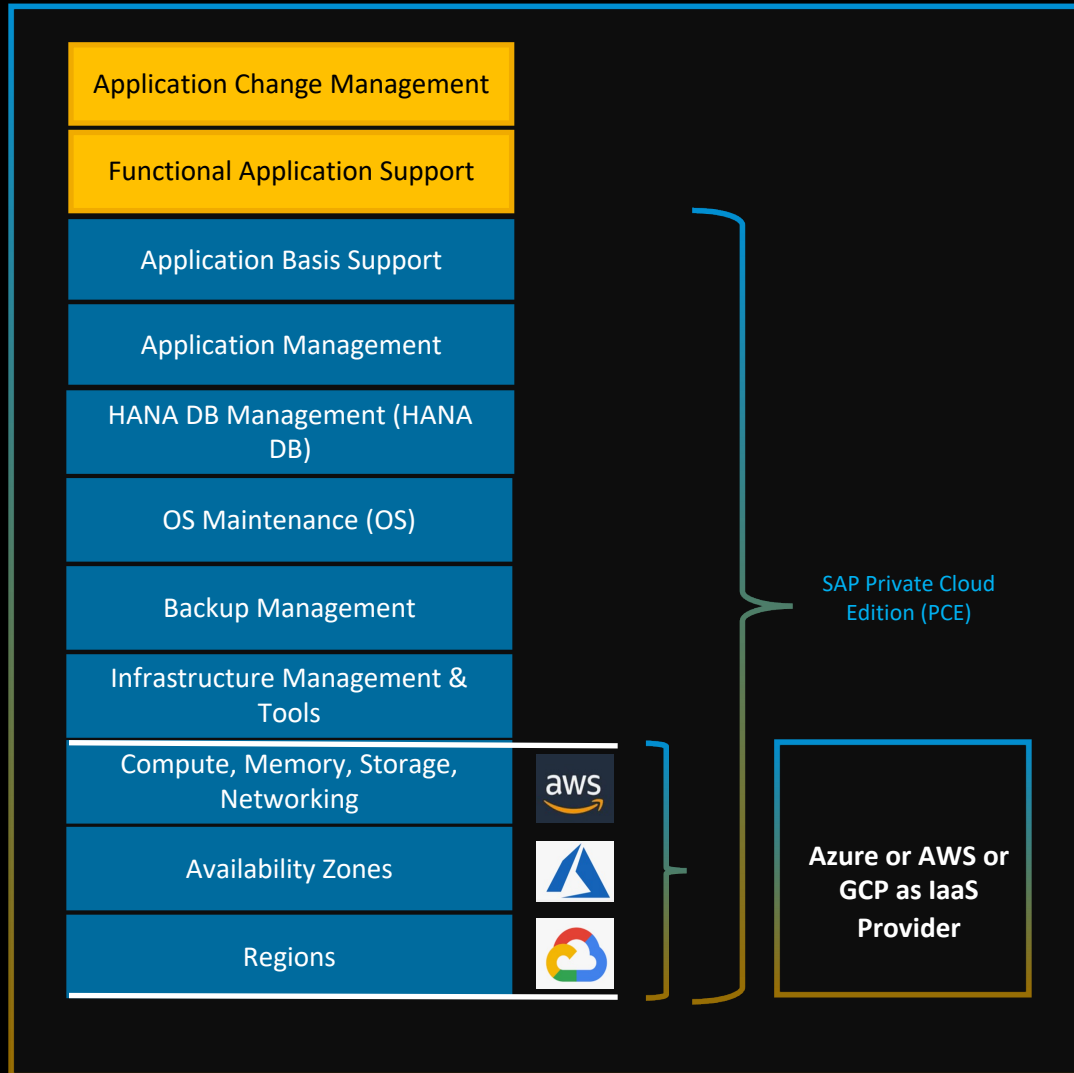
SRM Production
SRM MDM Production
SRM Test
SRM MDM Test
SRM Development
SRM MDM Development
BO BI Production
BO BI Test
Data Services Production
Data Services Test
Data Services Development
Content Server Production
Content Server Development
3rd party scanning Production
3rd party scanning Development
EHS Production
EHS Development
WWI Production
WWI Development
SAP Router Production
Print Server Production
Cloud Connector Production
Cloud Connector Development
Workforce Performance Builder



Move to Rise – To consider



SAP S/4HANA PCE Infrastructure Characteristics



Private Cloud Edition Characteristics

- Dedicated **Account/Subscription/Projects** for each customer
- Logically isolated **Virtual Private Network (VNET)/VPC**, **Dedicated S/4HANA application landscape** for customer assigned Private IP Address space
- **24x7 Security Monitoring**, Personal Data Breach Notifications
- **Auto-Restart** High Availability and Regional Disaster Recovery
- **Enhanced Compliance and Audits** with SAP managing SOC & C5. Infrastructure **SOC2** available on demand with IaaS providers
- Vulnerability Management and **Penetration Testing**
- Access to **S/4HANA Extensibility Framework**
- Side-by-side **and In-App extensions**
- Code enhancement & **code modifications allowed**
- **Expert configuration** (full IMG access)
- Scalable platform
- Resilience and TCO of hyperscaler infrastructure
- **Technical operations** done by SAP
- Upgrade installation **on customer request**

What to think about when moving to RISE - IV

Landscape

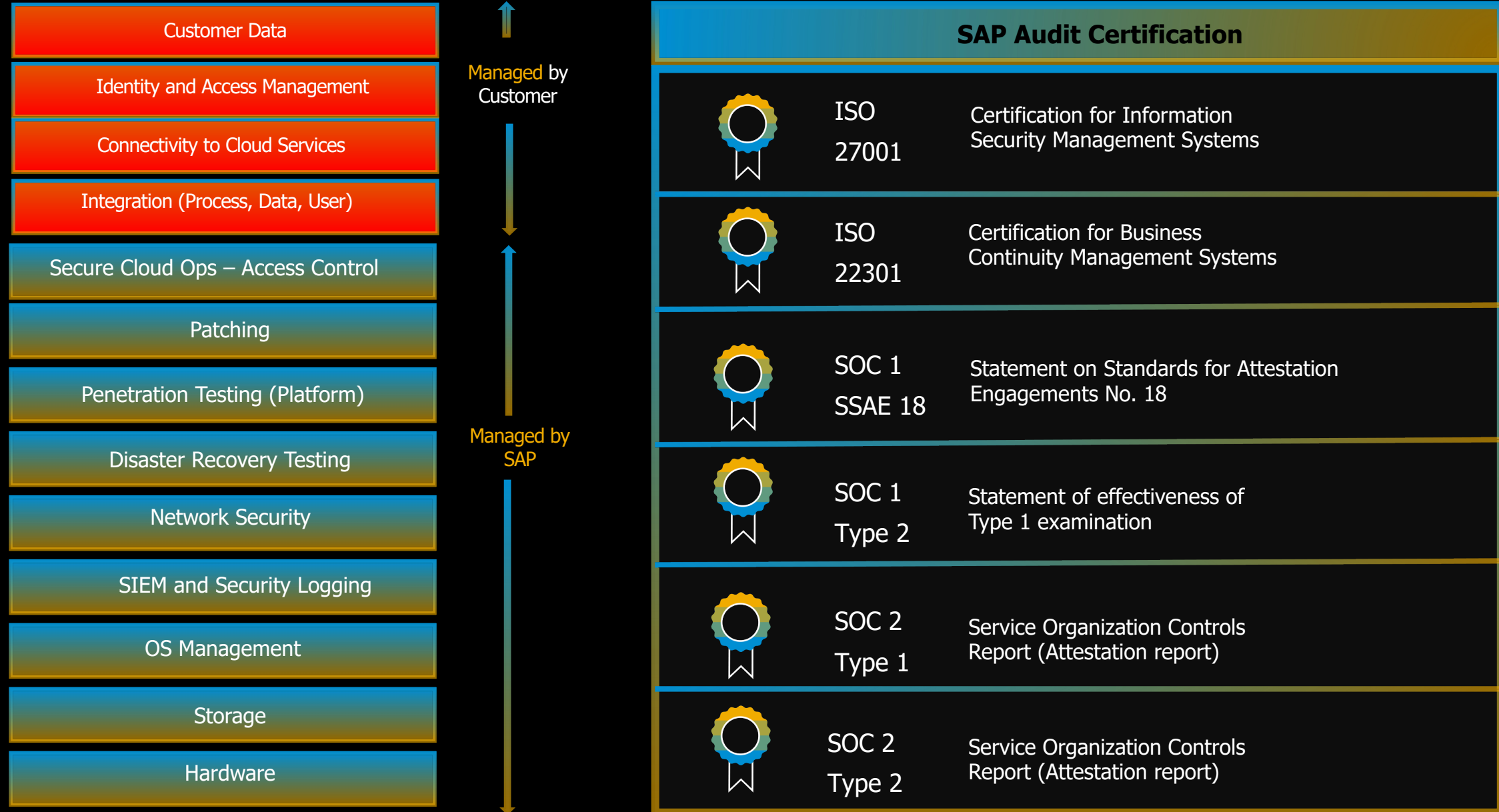
- Evaluate current Landscape (sandbox/dev/test/prod/education...)
 - What can be consolidated, what is necessary...
- What other non-SAP systems in the current landscape is needed (e.g. print servers, Scanning/OCR,)?
- Sizing
 - Document current sizing (Early watch reports)
 - Estimate potential growth

SAP S4H PCE Security

Who is responsible for what?



SAP Security Assurance - Responsibilities



Elements concerning GDPR and Schrems II



Layers of Assurance



Contract

- Data processing agreement to meet applicable local data privacy regulations globally

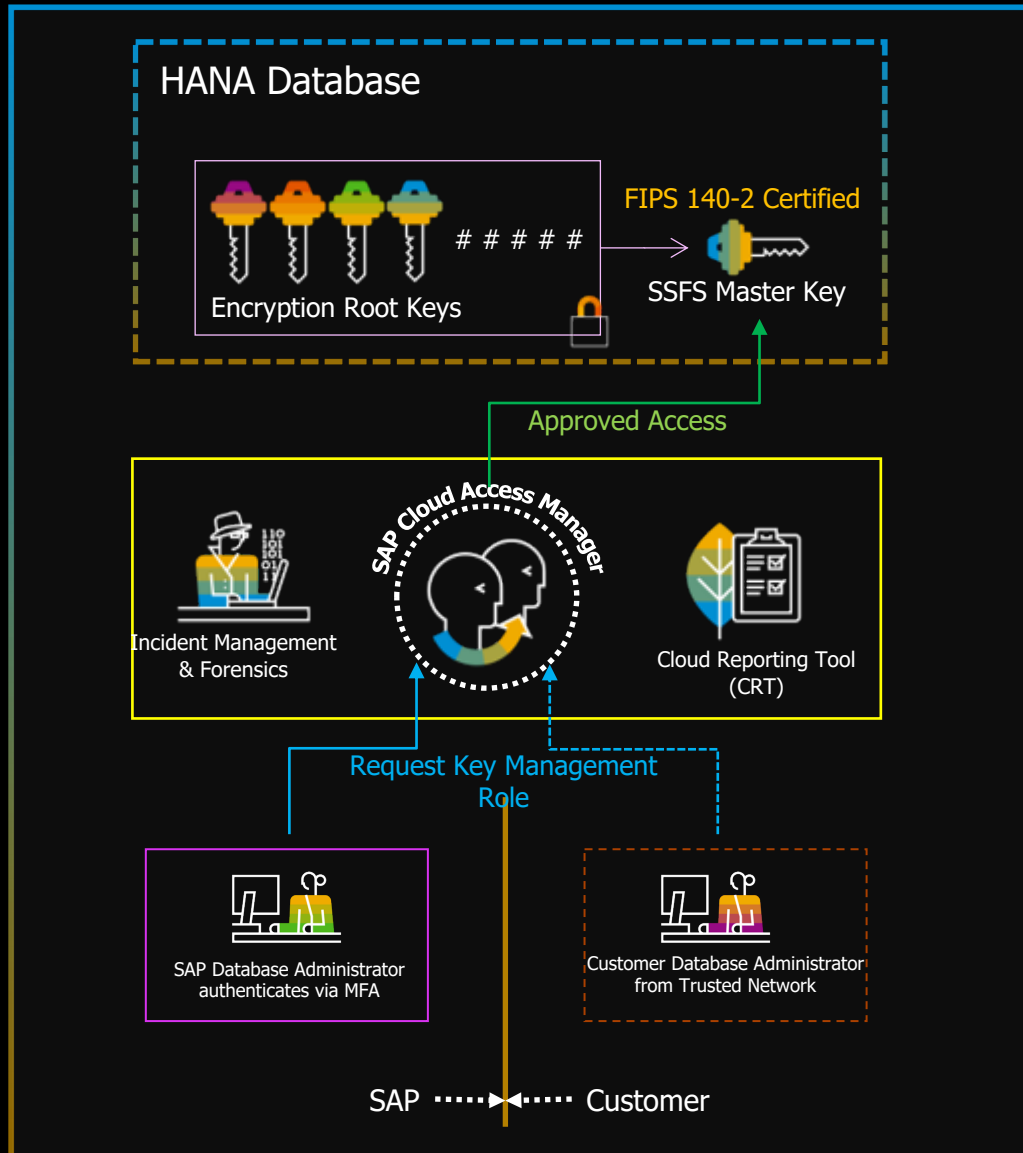
Audit and Certification

- Service Organization Control (SOC) reports and certifications to provide independent evidence for security, availability, confidentiality, data protection, and quality

Policies, directives, and standards

- Integrated management system for information security, data protection, and service delivery
- Comprehensive security architecture covering applications, processing systems, and data center

Key Management Approach



- 1 HANA Data Encryption uses **AES-256-CBC (256-bit key length)** algorithm. Various encryption root keys (data volume, log volume, backup, application) are stored in the **Instance Secure Store File System (SSFS)** within the HANA database instance. SAP Crypto libraries used are **FIPS 140-2 certified**. Contents of SSFS is protected by **SSFS Master Key**.
- 2 Unique encryption root keys and master key are generated during installation and during HANA version updates. Master keys can also be changed in regular intervals upon request. **Segregation of duties (SoD)** principle is applied to key management.
- 3 SAP uses Identity and Access Management system called **Cloud Access Manager (CAM)** to **control all access** to customer managed environment. Only Database administrators who has specific key management role requested and granted can manage the key lifecycle.
- 4 **No one have access to read HANA Encryption keys**. Database administrators with approved CAM access uses HANA Cockpit to update the keys (or execute SQL commands) triggering **FIPS 140-2 compliant** SAP Crypto libraries. A unique key is then generated.
- 5 **Customer can optionally have HANA administrator roles and can request key management roles** via CAM approval process. Once approved, customer administrator will be able to update the keys.
- 6 **The Cloud Reporting tool (CRT) used for regular cryptography and key management reporting**. An automatic report, generated on weekly basis, is used to identify encryption status of database servers. **Security Incident management and Forensics** are applied on key management processes
- 7 **Keys are backed up along with database backup** in a secure way. The root key backup is secured using a single password, which is set before a backup is created. The password is securely stored and all subsequent root key backups taken are protected by this password. Upon termination of the system **drop database procedures will delete SSFS and there by destructing the all the keys**. File system then securely deleted as per secure decommissioning procedures.