

## Winter Navigation Service (WNS)

1. Winter Navigation Service provides ships ice routes and detailed information regarding icebreaker assistance in the northern Baltic Sea. Information will be provided from ice-coordination centers and directly from icebreakers.
2. In ice-covered areas, the coordinating icebreaker provides waypoints, which indicate the recommended route. The waypoints are set in order to help vessels navigate more easily and safely in ice conditions and in order to enable ships to navigate unassisted for as long as possible. Ships are, however, at all times responsible for their own safe navigation.
3. General ice waypoints for all ships will be available for all vessels for route planning. When ships are entering the ice covered waters, Shore Centers will send the up-to-date waypoints directly to the ship.
4. Icebreaking authorities recommend that all ships that are bound for ports in ice-covered water send their voyage plan (Preferably, it should contain a schedule) to the service. Information will be used for monitoring of the ships voyage in ice conditions and for planning of icebreaker assistance.
5. When needed, icebreakers will send detailed recommended ice routes to ships. These recommendations can be either short alternative segments for the planned route or the modifications in the ships original route. After receiving the information, ships navigational personnel can update the current voyage plan and send it to all interested parties.
6. In addition, icebreakers and coordination centers can send further information using text messages. This can include information such as; the position, name and VHF working channel of the icebreaker, recommended time of arrival to icebreaker meeting point, assistance order or other navigational instructions.

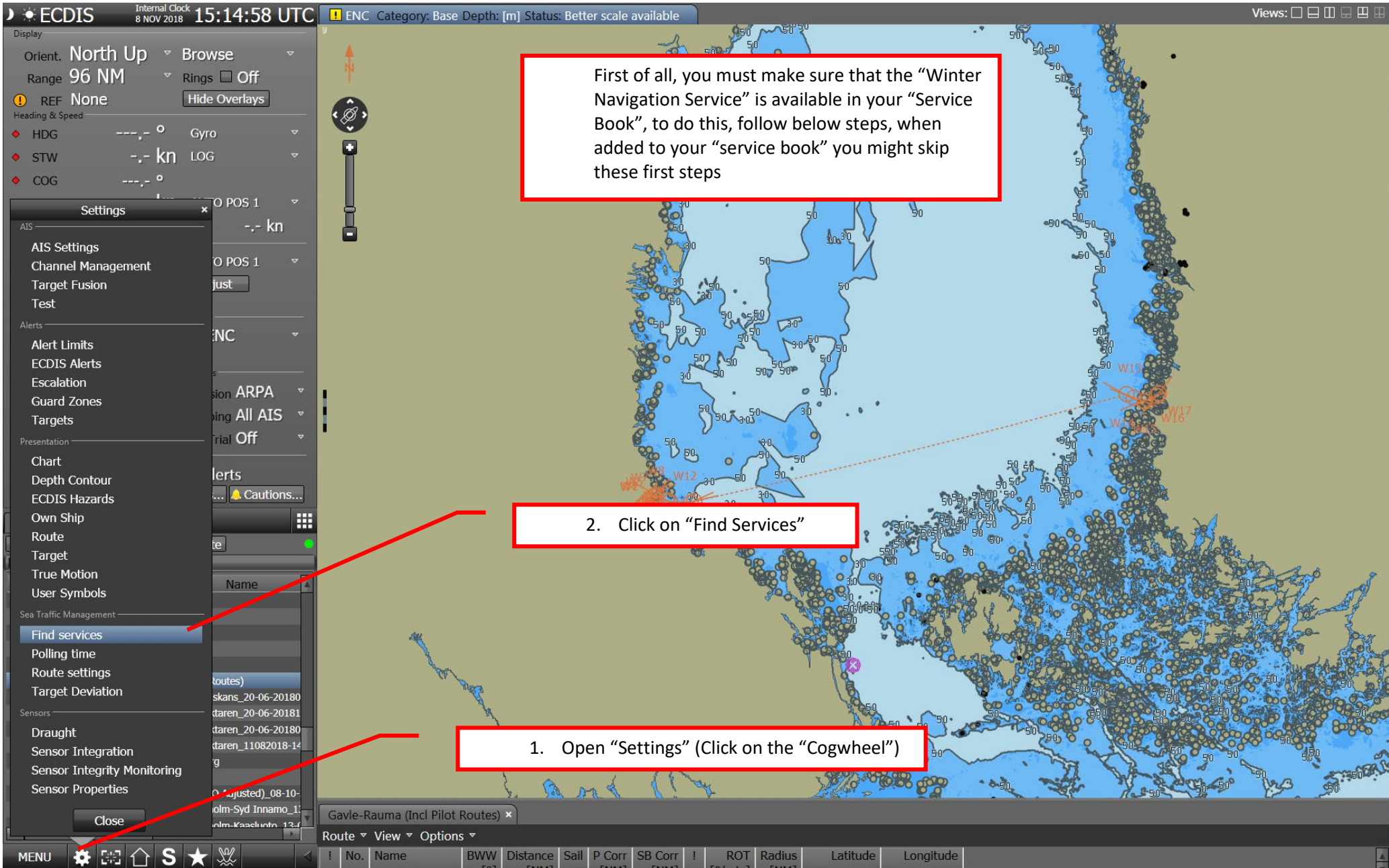
### *WNS Example*

Ship voyage: Baltic Sea-Oulu

1. The ship share the route with the WNS (Which you can find in your STM ECDIS).
2. WNS receives your route, Icebreakers and VTS's will monitor the ships proceeding along the route. When ice conditions require WNS will send recommended ice route to the ship.
3. If WNS seems that it's necessary to send a recommended route to the ship they can edit the route received from the ship and send back the edited route to you or WNS can send only a short ice route to the ship, and then the ship has to insert the Ice route into it's own route.
4. Depending on what ECDIS system you ship has, you will in different ways be able to get the WNS to "Subscribe" on your monitored route, i.e. if you do changes in you route and chose it for monitoring again, WNS will be informed about you updates. In some of the ECDISes (Transas) the ship can subscribe on the WNS.

Below it is shown in detail how to do it in a Wärtsilä SAM Platinum

## How To Use Winter Navigation Service in Wärtsilä SAM Platinum STM ECDIS





CDIS

Internal Clock  
8 NOV 2018 15:22:10 UTC

ENC Category: Base Depth: [m] Status: Better scale available

Views: [Icons]

Display

Orient: North Up

Range 24 NM

REF None

Heading & Speed

HDG

STW

COG

Gyro

LOG

Browse

Rings Off

Hide Overlays

Settings

AIS

AIS Settings

Channel Management

Target Fusion

Test

Alerts

Alert Limits

ECDIS Alerts

Escalation

Guard Zones

Targets

Presentation

Chart

Depth Contour

ECDIS Hazards

Own Ship

Route

Target

True Motion

User Symbols

Sea Traffic Management

Find services

Polling time

Route settings

Target Deviation

Sensors

Draught

Sensor Integration

Sensor Integrity Monitoring

Sensor Properties

Close

Find services

Search options

UnLoCode:

MMSI:

IMO:

Keywords:

Freertext:

Service Provider Ids:

Service Instance Id:

Service Type: Evaluation Service

Search

Name	OrganizationId	UnLoCode	Status
Baltic Bright	urn:mrm:stm:org:adveto		release
DMI Ice Chart Baltic service	urn:mrm:mcl:org:dmi		release
Baltic Navigational Warning S	urn:mrm:stm:org:sma		release
Winter Navigation Service	urn:mrm:stm:org:fta		release
DMI Route METOC service	urn:mrm:mcl:org:dmi		release

Add

Name	Organization Id	
Gothenburg SC	urn:mrm:stm:org:tran	urn:mrm:stm:
Baltic Navigational Warnin	urn:mrm:stm:org:sma	urn:mrm:stm:

Remove

Ok Cancel

3. Write "Winter" in the "Freertext" window

4. Click on "Search"

LAT: 60°25.623' N

LON: 019°59.827' E

RNG: --- NM BRG: --- °

Underwater/awash rock

Water level effect: awash

Sail

P Corr

SB Corr

!

ROT

Radius

Latitude

Longitude

Internal Clock  
22 JAN 2019 13:47:55 UTC

ENC Category: Standard Depth: [m]

Views: [Icons]

Display

Orient. North Up

Range 200 NM

REF None

Heading & Speed

HDG

STW

COG

Gyro

LOG

Hide Overlays

Settings

AIS Settings

Channel Management

Target Fusion

Test

Alerts

Alert Limits

ECDIS Alerts

Escalation

Guard Zones

Targets

Presentation

Chart

Depth Contour

ECDIS Hazards

Own Ship

Route

Target

True Motion

User Symbols

Sea Traffic Management

Find services

Polling time

Route settings

Target Deviation

Sensors

Draught

Sensor Integration

Sensor Integrity Monitoring

Sensor Properties

Close

Find services

Search options

UnLoCode: (optional)

MMSI: (optional)

IMO: (optional)

Keywords: (optional)

Fretext: winter (optional)

Service Provider Ids: (optional)

Service Instance Id: (optional)

Service Type: (optional)

Search

Name	OrganizationId	UnLoCode	Status	Ver
Winter Navigation Service	urn:mrm:stm:org:fta		released	1.0

Add

Name	Organization Id
STM Validation Centre	urn:mrm:stm:org:sma
Gothenburg SC	urn:mrm:stm:org:stt
TEST SUPPORT ECDIS 2	urn:mrm:stm:org:transas
Mignon	urn:mrm:stm:org:furuno

Remove

Ok Cancel

Find services

Search options

UnLoCode: (optional)

MMSI: (optional)

IMO: (optional)

Keywords: (optional)

Fretext: winter (optional)

Service Provider Ids: (optional)

Service Instance Id: (optional)

Service Type: (optional)

Search

Name	OrganizationId	UnLoCode	Status	Ver
Winter Navigation Service	urn:mrm:stm:org:fta		released	1.0

Add

Name	Organization Id
TEST SUPPORT ECDIS 2	urn:mrm:stm:org:transas
Mignon	urn:mrm:stm:org:furuno
Winter Navigation Service	urn:mrm:stm:org:fta

Remove

Ok Cancel

5. The service is found and can be added to the "service book" by clicking the "Add Button"

6. Now the "Winter Navigation Service" is added to your "service book"

MENU [Icons]

Planning View, 30 Waypoints (30.255 NM, 20:05), 1 Selected (16.82 NM, 0:40)

ECDIS

Internal Clock  
22 JAN 2019 13:52:30 UTC

ENC Category: Standard Depth: [m]

Views:

Display

Orient. North Up

Range 200 NM

REF None

Heading & Speed

HDG ---.° Gyro

STW ---. kn LOG

COG ---.°

SOG ---. kn AUTO POS 1

Set ---.° Drift ---. kn

Position WGS84

LAT ---°--'--" AUTO POS 1

LON ---°--'--" Adjust

Vector & Trails

REF Ground

Vector Off

Plot Off

Predict Off

Charts

ENC

Targets

Fusion ARPA

Sleeping All AIS

Trial Off

Alerts

AI-01:AIS Offline

Silence

ACK

Alerts...

Cautions...

Now, the "Winter Navigation Service" is available in your "Service Book", follow below steps

1. "Open" the "Ship Route" (This case Baltic Sea-Uleaaaborg)

2. In "Route Browser", right click on the "Ship Route"

Baltic Sea-Uleaaaborg

Route View Options

Open	Name	BWW [°]	Distance [NM]	Sail	P Corr [NM]	SB Corr [NM]	I	ROT [°/min]	Radius [NM]	Latitude	Longitude
	Kelmi	012.4								65°05.960' N	024°15.773' E
	Oulu Pilot S...	020.1								65°07.140' N	024°16.800' E
	Holma	019.5								65°07.942' N	024°17.472' E
	Dulu 1	057.8								65°10.913' N	024°28.678' E
	Dulu 2	092.0								65°10.821' N	024°35.043' E
	Dulu 3	139.7								65°08.827' N	024°39.058' E
	Liberta	114.8	1.02	RL	0.016	0.016	↺	23.9	1.00	65°08.445' N	024°41.025' E
	Kotalahti	114.9	2.04	RL	0.016	0.016	↺	15.9	1.50	65°07.272' N	024°47.023' E
	Hammasmat...	061.7	3.19	RL	0.016	0.016	↺	47.7	0.50	65°08.549' N	024°52.646' E
	Kattilankalla	095.6	2.20	RL	0.016	0.016	↺	47.7	0.50	65°08.334' N	024°57.848' E
	Keskimmäinen	130.0	1.54	RL	0.016	0.016	↺	23.9	1.00	65°07.327' N	025°00.701' E
	Löyhä	110.3	2.49	RL	0.016	0.016	↺	23.9	1.00	65°06.450' N	025°06.343' E
	Välimalata	135.0	1.24	RL	0.016	0.016	↺	23.9	1.00	65°05.651' N	025°08.237' E
	Aappo	123.0	1.84	RL	0.016	0.016	↺	23.9	1.00	65°04.622' N	025°11.988' E
	Kolmikulma	141.5	2.83	RL	0.016	0.016	↺	23.9	1.00	65°02.421' N	025°16.137' E
	Kyrokari	124.7	2.02	RL	0.016	0.016			1.00	65°01.360' N	025°19.766' E
	Rommakko	124.7	2.15	RL	0.016	0.016	↺	79.6	0.30	65°00.108' N	025°24.042' E
	Oulu satama-...	102.2	0.29	RL	0.016	0.016			0.30	65°00.060' N	025°24.569' E

MENU

Planning View, 36 Waypoints (502.33 NM, 20:05), 1 Selected (16.82 NM, 0:40)



Display

Orient. North Up

Browse

Range 200 NM

Rings ☐ Off

REF None

Hide Overlays

Heading & Speed

HDG ---.° Gyro

STW ---. kn LOG

COG ---.°

SOG ---. kn AUTO POS 1

Set ---.° Drift ---. kn

Position WGS84

LAT ---°---' AUTO POS 1

LON ---°---' Adjust

Vector & Trails

REF Ground

Vector Off

Plot Off

Predict Off

Charts

ENC

Targets

Fusion ARPA

Sleeping All AIS

Trial Off

Alerts

AI-01:AIS Offline

Silence

ACK

Alerts...

Cautions...

Message... x Route Bro... x

New Route... Open Close Activate

Filter

State	Catalog	Name
<input checked="" type="checkbox"/>	Stm	0903_KBH-OSLO COAST
<input checked="" type="checkbox"/>	Stm	0904_OSLO-KBH Coast
<input checked="" type="checkbox"/>	Undefined	0904-M-OSLO-CPH_23-01-201812:0
<input checked="" type="checkbox"/>	Undefined	aa-bb
<input checked="" type="checkbox"/>	Stm	Alandshav-Sthlm NPR Fredrik
<input checked="" type="checkbox"/>	Stm	Anders andra till Vorsaa
<input checked="" type="checkbox"/>	Undefined	Baltic Sea-Uleaaborg
<input checked="" type="checkbox"/>	Undefined	barmen-oslo
<input checked="" type="checkbox"/>	Undefined	BRH-GOT_01092019-122002
<input checked="" type="checkbox"/>	Undefined	BRH-GOT_STM_HH
<input checked="" type="checkbox"/>	Undefined	Brofjorden- Gavle (GB) 044-18_11132018-11
<input checked="" type="checkbox"/>	Undefined	Brofjorden Outbound - Crude oil jetty_11132
<input checked="" type="checkbox"/>	Undefined	Cape Town-Lulea
<input checked="" type="checkbox"/>	Undefined	Dateline Test Going East_05-09-201807:51:5
<input checked="" type="checkbox"/>	Undefined	DR2-REVENGEN-HÖGLUND_12202018-08562

Open

Waypoint List...

Compare With...

Save

Save Route As...

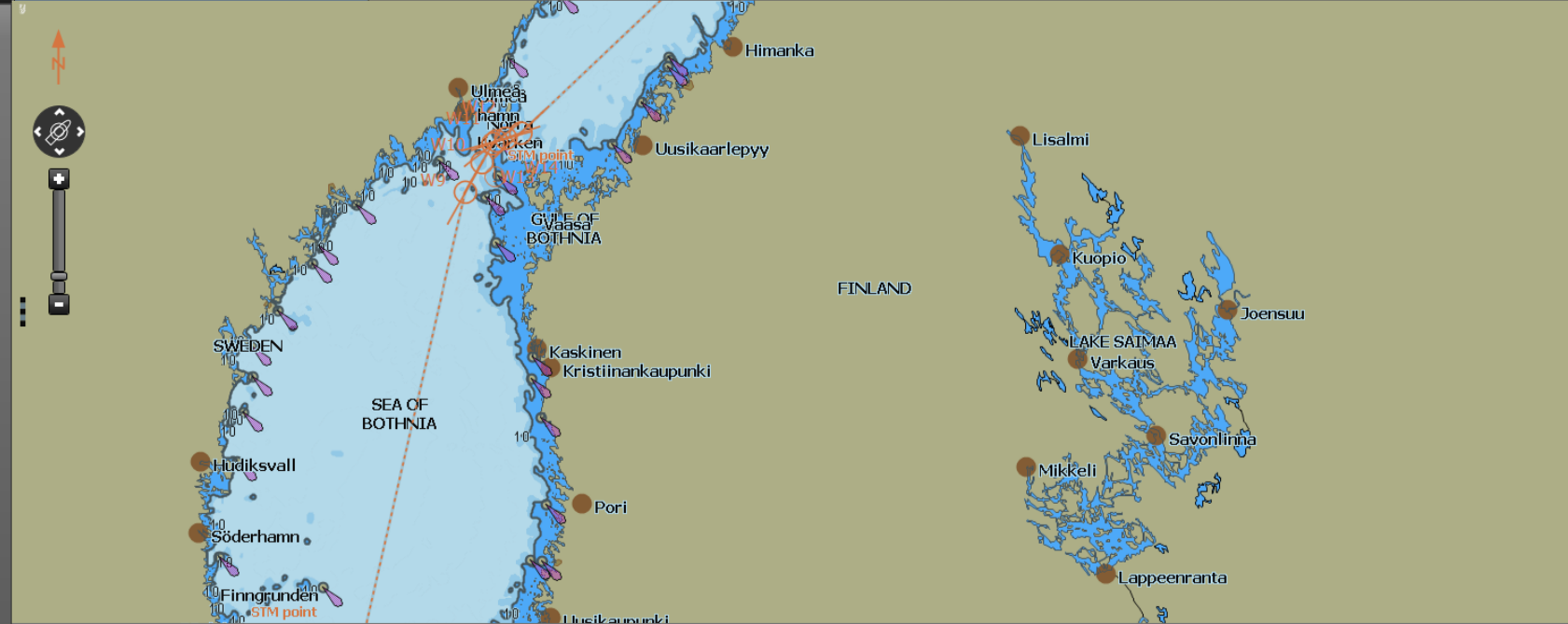
Edit Route...

Delete Route...

Import Routes

Export Route

STM



Baltic Sea-Uleaaborg x

Route View Options

	Name	BWW [°]	Distance [NM]	Sail	P Corr [NM]	SB Corr [NM]	!	ROT [°/min]	Radius [NM]	Latitude	Longitude
19	Kelmi	012.4	7.82	RI	0.016	0.016		23.9	1.00	65°05.960' N	024°15.773' E
20	Oulu Pilot S	012.4	7.82	RI	0.016	0.016		23.9	1.00	65°07.140' N	024°16.800' E
21	Holma	012.4	7.82	RI	0.016	0.016		23.9	1.00	65°07.942' N	024°17.472' E
22	Oulu 1	012.4	7.82	RI	0.016	0.016		23.9	1.00	65°10.913' N	024°28.678' E
23	Oulu 2	012.4	7.82	RI	0.016	0.016		23.9	1.00	65°10.821' N	024°35.043' E
24	Oulu 3	012.4	7.82	RI	0.016	0.016		23.9	1.00	65°08.827' N	024°39.058' E
25	Liberta	012.4	7.82	RI	0.016	0.016		23.9	1.00	65°08.445' N	024°41.025' E
26	Totolahti	114.9	2.04	RL	0.016	0.016		15.9	1.50	65°07.272' N	024°47.023' E
27	Hammamat...	061.7	3.19	RL	0.016	0.016		47.7	0.50	65°08.549' N	024°52.646' E
28	Send to VIS (STM)	061.7	3.19	RL	0.016	0.016		47.7	0.50	65°08.334' N	024°57.848' E
29	Withdraw from VIS (STM)	110.3	2.49	RL	0.016	0.016		23.9	1.00	65°07.327' N	025°00.701' E
30	Access...	110.3	2.49	RL	0.016	0.016		23.9	1.00	65°06.450' N	025°06.343' E
31	Use Service	135.0	1.24	RL	0.016	0.016		23.9	1.00	65°05.651' N	025°08.237' E
32	Send Text Message...	123.0	1.84	RL	0.016	0.016		23.9	1.00	65°04.622' N	025°11.988' E
33	Assign new voyage ID (UVID)...	123.0	1.84	RL	0.016	0.016		23.9	1.00	65°02.421' N	025°16.137' E
34		010.6	0.29	RL	0.016	0.016		23.9	1.00	65°01.360' N	025°19.766' E
35	Rommakko	124.7	2.15	RL	0.016	0.016		79.6	0.30	65°00.108' N	025°24.042' E
36	Oulu satama...	102.2	0.29	RL	0.016	0.016		23.9	0.30	65°00.060' N	025°24.569' E

ECDIS

Internal Clock  
22 JAN 2019 13:55:12 UTC

ENC Category: Standard Depth: [m]

Views:

Orient. North Up

Range 200 NM

REF None

Heading & Speed

HDG ---.° Gyro

STW ---. kn LOG

COG ---.°

SOG ---. kn AUTO POS 1

Set ---.° Drift ---. kn

Position WGS84

LAT ---°---' AUTO POS 1

LON ---°---' Adjust

Vector & Trails

REF Ground

Vector Off

Plot Off

Predict Off

Charts

ENC

Targets

Fusion ARPA

Sleeping All AIS

Trial Off

Alerts

AI-01:AIS Offline

Silence

ACK

Alerts

Cautions

Message...

Route Bro...

New Route...

Open

Close

Filter

State

Catalog

Open

Waypoint List...

Compare With...

Save

Save Route As...

Edit Route...

Delete Route...

Import Routes

Export Route

STM

Undefined Baltic Sea-Uleaborg

Undefined barmen-oslo

Undefined BRH-GOT\_01092019-122002

Undefined BRH-GOT\_STM\_HH

Undefined Brofjorden- Gavle (GB) 044-18\_11132018-1

Undefined Brofjorden Outbound - Crude oil jetty\_1113

Undefined Cape Town-Lulea

Undefined Dateline Test Going East\_05-09-201807:51:3

Undefined DR2-REVENGEN-HOGUDD\_12202018-08562

Baltic Sea-Uleaborg

Route View Options

No. Name BWW

19 Kelmi 012.4 7.82 RL 0.016 0.016 23.9 1.00 65°05.960' N 024°15.773' E

20 Oulu Pilot S 020.1 1.32 RL 0.016 0.016 23.9 1.00 65°07.140' N 024°16.800' E

21 Holma 019.5 0.51 RL 0.016 0.016 23.9 1.00 65°07.942' N 024°17.472' E

22 Oulu 1 057.8 5.60 RL 0.016 0.016 23.9 1.00 65°10.913' N 024°28.678' E

23 Oulu 2 092 0.016 0.016 23.9 1.00 65°10.913' N 024°35.043' E

24 Oulu 3 139 0.016 0.016 23.9 1.00 65°10.913' N 024°39.058' E

25 Liberta 114 0.016 0.016 23.9 1.00 65°10.913' N 024°41.025' E

26 Kotalahti 114 0.016 0.016 23.9 1.00 65°10.913' N 024°47.023' E

Gothenburg SC (Enhanced Monitoring)

Baltic Navigational Warning Service (Navigational Warnings)

Nordic Pilot Route Service (Route Catalogue)

STM Validation Centre (Evaluation Service)

Gothenburg SC (Enhanced Monitoring)

TEST SUPPORT ECDIS 2 (Ship Voyage Information)

Mignon (Ship Voyage Information)

Winter Navigation Service (Winter Navigation)

Send Text Message...

Assign new voyage ID (UVID)...

35 Rommakko 124.7 2.15 RL 0.016 0.016 79.6 0.30 65°00.108' N 025°24.042' E

36 Oulu satama-... 102.2 0.29 RL 0.016 0.016 0.30 65°00.060' N 025°24.569' E

MENU

Settings

Home

S

Star

Wave

Planning View, 36 Waypoints (502.33 NM, 20:05), 1 Selected (16.82 NM, 0:40)

After you left clicked on "Winter Navigation Service", your route is sent to the service, wait for a while, (Depending on your ship's Internet Connection) before you continue to next page

4. Point on "Use Service" with "Mouse Pointer"

5. "Left Click" on "Winter Navigation Service"

ECDIS Internal Clock 15:14:29 UTC 22 JAN 2019 ENC Category: Standard Depth: [m] Views: [Icons]

Display

Orient. North Up Browse

Range 200 NM Rings ☐ Off

REF None Hide Overlays

Heading & Speed

HDG --- ° Gyro

STW --- kn LOG

COG --- °

SOG --- kn AUTO POS 1

Set --- ° Drift --- kn

Position WGS84

LAT --- ° AUTO POS 1

LON --- ° Adjust

Vector & Trails

REF Ground

Vector Off T

Plot Off T

Predict Off

ENC

Targets

Fusion ARPA

Sleeping All AIS

Trial Off

Alerts

AI-01: AIS Offline

Silence ACK Alerts... Cautions...

Message... Route Bro...

New Text Message Show all

Filter

ID	TYPE	FROM
★ urn:n	RTZ	urn:mrn:stm:org:fta
urn:n	RTZ	urn:mrn:stm:org:fta
cf5a2	ACKNOWL	urn:mrn:stm:org:fta
ef01f	UNAUTHO	urn:mrn:stm:org:fta
e2abx	ACKNOWL	urn:mrn:stm:org:fta
5909f	ACKNOWL	urn:mrn:stm:org:fta
urn:n	TXT	Wartsila SAM Electronics Gmb
urn:n	TXT	Wartsila SAM Electronics Gmb
urn:n	TXT	urn:mrn:stm:org:fta
c593c	ACKNOWL	urn:mrn:stm:org:fta
6c48f	ACKNOWL	urn:mrn:stm:org:fta
urn:n	TXT	Wartsila SAM Electronics Gmb
urn:n	TXT	Wartsila SAM Electronics Gmb
ed10f	ACKNOWL	urn:mrn:stm:org:fta

6. Open Message Browser

7. Mark the message that has a "Star" (Means "Unread"), left of it.

8. A "Window" will open up where you can read what type of message it is, in this case it is a edited route that WNS sent back to you.

STM Rtz Message

From: urn:mrn:stm:org:fta

Service: Winter Navigation Service

Voyage: urn:mrn:stm:voyage:id:wartsila

Route Name: Baltic Sea-Uleaaaborg

Catalog: Undefined

Save Cancel

9. Click on the "Save button"

No.	Name	BWW [°]	Distance [NM]	Sail	Speed [kn]	Max SPD [kn]	AP	Demanded Arrival
1	Initial waypoint							22 Jan 2019 14:16
2		035.1	65.77	RL	25.0			22 Jan 2019 16:53
3		357.5	4.77	RI	25.0			22 Jan 2019 17:04
15	Ice WP	046.5	91.97	RL	25.0			22 Jan 2019 17:34
16	Ice WP	062.9	15.44	RL	25.0			22 Jan 2019 17:50
17	Kariva	047.1	1.61	RL	25.0			22 Jan 2019 19:04
18	Merikallat SE	001.2	12.41	RL	25.0			22 Jan 2019 19:21
19	Kelmi	012.4	7.82	RL	25.0			22 Jan 2019 19:48

Schedule View, 36 Waypoints (502.33 NM, 20:05), 1 Selected (7.82 NM, 0:18)



The screenshot displays a sailing software interface. The top half features a map of the Baltic Sea region, with a red line indicating a planned route. A red box on the map contains the text "10. Click here". The bottom half of the interface shows a table with 12 columns: !, No., Name, BWW [°], Distance [NM], Sail, P Corr [NM], SB Corr [NM], !, ROT [°/min], Radius [NM], Latitude, and Longitude. The table lists 9 waypoints. Below the table, it says "Planning View, 36 Waypoints (502.38 NM, 20:05)".

!	No.	Name	BWW [°]	Distance [NM]	Sail	P Corr [NM]	SB Corr [NM]	!	ROT [°/min]	Radius [NM]	Latitude	Longitude
	1	Initial waypoint				0.500	0.500			1.00	58°36.253' N	018°57.531' E
	2		035.1	65.77	RL	0.500	0.500		↻ 23.9	1.00	59°30.217' N	020°11.101' E
	3		357.5	4.27	RL	0.500	0.500		↻ 23.9	1.00	59°34.575' N	020°10.722' E
	4		312.3	12.49	RL	0.500	0.500		↻ 23.9	1.00	59°42.757' N	019°52.950' E
	5		321.0	7.01	RL	0.500	0.500		↻ 23.9	1.00	59°48.137' N	019°44.318' E
	6		320.7	30.67	RL	0.500	0.500		↻ 23.9	1.00	60°11.936' N	019°05.404' E
	7		340.7	6.92	RL	0.500	0.500		↻ 23.9	1.00	60°18.484' N	019°00.801' E
	8		004.1	11.34	RL	0.500	0.500		↻ 23.9	1.00	60°29.644' N	019°02.414' E
	9		012.9	170.52	RL	0.500	0.500		↻ 23.9	1.00	63°15.429' N	020°23.083' E

Planning View, 36 Waypoints (502.38 NM, 20:05)



Display

Orient. North Up

Range 48 NM

REF None

Hide Overlays

Heading & Speed

HDG ---.° Gyro

STW ---. kn LOG

COG ---.°

SOG ---. kn AUTO POS 1

Set ---.° Drift ---. kn

Position WGS84

LAT ---°---'---" AUTO POS 1

LON ---°---'---" Adjust

Vector & Trails

REF Ground

Vector Off

Plot Off

Predict Off

Charts

ENC

Fusion ARPA

Sleeping All AIS

Trial Off

Alerts

AI-01:AIS Offline

Silence ACK Alerts... Cautions...

Message... Route Bro...

New Route... Open Close Activate

Filter

atalog

Name

defined Ice route to Oulu

defined NCA\_Kaarstoe\_Skudefjorden\_In\_18012019\_01182019-1

defined HHBalticSea-Uleaaaborg

defined FINAL-FIOUO\_01222019-131855

defined English Channel-Landskrona

defined Las Palmas-Landskrona

defined NCA\_Kaarstoe\_Skudefjorden\_Out\_18012019\_01182019-

defined STAVANGER PRS TEST Out-

defined PRStest StavangerHH-

defined BRH-GOT\_STM\_HH

defined BRH-GOT\_01092019-122002

defined In 8 Above 10m 2 S.Trub via S.Ch to Ålvsborg\_010920

defined DR2-REVENGEN-HÖGUDD\_12202018-085623

defined Oresound South Bound\_12202018-085629

defined GRG - Buoy M1 RED CARD 12202018-085626



Save

Close

Reschedule

Compare With...

Activate

Schedule Graph...

Setup Passage Plan...

Print a Passage Plan...

Edit Route...

Reverse Route

Check Route...

Estimate STW

Route View Options

No.	Name	BWW [°]	Distance [NM]	Sail	P Corr [NM]	SB Corr [NM]	ROT [°/min]	Radius [NM]	Latitude	Longitude
1	Initial waypoint				0.500	0.500		1.00	58°36.253' N	018°57.531' E
2		035.1	65.77	RL	0.500	0.500	23.9	1.00	59°30.217' N	020°11.101' E
3		357.5	4.27	RL	0.500	0.500	23.9	1.00	59°34.575' N	020°10.722' E
4		312.3	12.49	RL	0.500	0.500	23.9	1.00	59°42.757' N	019°52.950' E
5		321.0	7.01	RL	0.500	0.500	23.9	1.00	59°48.137' N	019°44.318' E
6		320.7	30.67	RL	0.500	0.500	23.9	1.00	60°11.936' N	019°05.404' E
7		340.7	6.92	RL	0.500	0.500	23.9	1.00	60°18.484' N	019°00.801' E
8		004.1	11.34	RL	0.500	0.500	23.9	1.00	60°29.644' N	019°02.414' E
9		012.9	170.52	RL	0.500	0.500	23.9	1.00	63°15.429' N	020°23.083' E

Planning View, 36 Waypoints (502.38 NM, 20:05)



Display

Orient. North Up

Browse

Range 48 NM

Rings ☐ Off

REF None

Hide Overlays

Heading & Speed

HDG --- ° Gyro

STW --- kn LOG

COG --- °

SOG --- kn AUTO POS 1

Set --- ° Drift --- kn

Position WGS84

LAT --- ° --- ' --- "

LON --- ° --- ' --- "

AUTO POS 1

Adjust

Vector & Trails

REF Ground

Vector Off

Plot Off

Predict Off

Charts

ENC

Fusion ARPA

Sleeping All AIS

Trial Off

Alerts

AI-01:AIS Offline

Silence

ACK

Alerts...

Cautions...

Message... x Route Bro... x

New Route...

Open

Close

Activate

Filter

atalog	Name
defined	Ice route to Oulu
defined	NCA_Kaarstoe_Skudefjorden_In_18012019_01182019-1
defined	HHBalticSea-Uleaaaborg
defined	FINAL-FIOUO_01222019-131855
defined	English Channel-Landskrona
defined	Las Palmas-Landskrona
defined	NCA_Kaarstoe_Skudefjorden_Out_18012019_01182019-1
defined	STAVANGER PRS TEST Out-
defined	PRStest StavangerHH-
defined	BRH-GOT_STM_HH
defined	BRH-GOT_01092019-122002
defined	In 8 Above 10m 2_S.Trub via S.Ch to Älvsborg_010920
defined	DR2-REVENGEN-HÖGUDD_12202018-085623
defined	Oresound South Bound_12202018-085629
defined	GRG - Ruuv M1 RED CARD 12202018-085626

MENU

Compare Route

Choose a version to compare!

Version	Name	Action	Date
4	Baltic Sea-Uleaaaborg	was Proposal route	22/01/2019 - 15:22:19 U
3	Baltic Sea-Uleaaaborg	was Proposal route	22/01/2019 - 15:21:43 U
2	Baltic Sea-Uleaaaborg	was Proposal route	22/01/2019 - 15:19:57 U
1	Baltic Sea-Uleaaaborg	was Proposal route	22/01/2019 - 15:19:25 U

Ok

Cancel

13. Choose what proposal you want to "compare" with the route you sent in.

12. Click OK

HHBalticSea-Uleaaaborg x

Route View Options

!	No.	Name	BWW [°]	Distance [NM]	Sail	P Corr [NM]	SB Corr [NM]	!	ROT [°/min]	Radius [NM]	Latitude	Longitude
	1	Initial waypoint				0.500	0.500			1.00	58°36.253' N	018°57.531' E
	2		035.1	65.77	RL	0.500	0.500		23.9	1.00	59°30.217' N	020°11.101' E
	3		357.5	4.27	RL	0.500	0.500		23.9	1.00	59°34.575' N	020°10.722' E
	4		312.3	12.49	RL	0.500	0.500		23.9	1.00	59°42.757' N	019°52.950' E
	5		321.0	7.01	RL	0.500	0.500		23.9	1.00	59°48.137' N	019°44.318' E
	6		320.7	30.67	RL	0.500	0.500		23.9	1.00	60°11.936' N	019°05.404' E
	7		340.7	6.92	RL	0.500	0.500		23.9	1.00	60°18.484' N	019°00.801' E
	8		004.1	11.34	RL	0.500	0.500		23.9	1.00	60°29.644' N	019°02.414' E
	9		012.9	170.52	RL	0.500	0.500		23.9	1.00	63°15.429' N	020°23.083' E

Planning View, 36 Waypoints (502.38 NM, 20:05)



