

Jersey Civil Emergency Centre Conservation Statement



Dr Peter Chowne
May 2013

CONTENTS

Introduction

1.0 Understanding the Site 4

- 1.1 Introduction and Overview
- 1.2 Historical Overview
- 1.3 Description
- 1.4 Assessment of Significance

2.0 Conservation Policies 12

- 2.1 Vulnerability
- 2.2 Conservation philosophy and objectives
- 2.3 Conservation Statement Policies

Bibliography 17

Appendices 18

Appendix 1: Room data sheets

Appendix 2: Survey of Archive Material

Appendix 3: Plan of generator Room (1963)

Appendix 4: Ventilating plant layout (1963)

INTRODUCTION

This Conservation Statement was commissioned by Jersey Heritage and prepared by Dr Peter Chowne in May 2013. The purpose of the Conservation Statement is to improve the understanding of the property, its significance and values. Based on this understanding policies that inform the protection, conservation and management of the structure are proposed.

The research that informs the Conservation Statement is based on limited published information available on the building, and limited archival sources. It was not possible within the time limits of a Conservation Statement to undertake an extensive archival search. The property was visited in April 2013, when the exterior, roof and interior were inspected. A measured survey was not undertaken and the contents were not moved as these are mainly 'in situ' reflecting the last use of the building as a Civil Emergency Centre and detailed archival recording is required.

The site is located east of Trinity Road in the parish of St. Helier at 42526 66462 and is a Listed Grade 2 (HE1586). States of Jersey are the owners of the site and it is managed by the Emergency Planning Board through the Emergency Planning Officer who kindly provided access to the site (figure 1).



Figure 1: Aerial photograph of the property (Jersey Mapping 2008)

1 Understanding the Site

1.1 Introduction and Overview

The purpose of this section is to investigate the historic development of the property in its historic and social context in order to identify its cultural significance.

Research into the history of the structure has been based on studies undertaken to date and published sources. The sources are limited in extent as the use of the site as a Civil Emergency Centre has in the past restricted access to the interior and roof. Two interior plans of the bunker are available. The plan and section published by the Channel Islands Occupation Society (CIOS) is concerned with the German layout and makes no reference to later additions and alterations (Ginns, 1999). These are shown on the 2002 plan produced by Subterranea Britannica (SB). The rooms shown on the CIOS plan are numbered and those on the SB are annotated with description based on function at the time of survey. Neither plan shows the roof structures. An undated plan of the current room layout is presented in appendix 1. Roof structure plans can be found in appendices 3 and 4. For ease of description and use in this conservation statement a new 1:200 plan has been drafted using the States of Jersey planning GIS layer (fig. 2). The CIOS plan has been overlain on this as the SB was found to be inaccurate for these purposes. There is an almost perfect alignment of the CIOS plan which was scanned from the 1999 book illustration and imported to MapInfo as a raster file. The rooms were renumbered, partitions added from the visit inspection notes checked against the SB plan. A plan of the bunker was provided by the States of Jersey Emergency Planning Officer which shows the portioning and designated room

use. The date of this is not known although the measurements are Imperial suggesting the 1960s or early 1970s. Correlation with the published plans and this plan can be found in the Room Survey Sheets (appendix 1).

Within the time limitations of a Conservation Statement study it has not been possible to access detailed archival sources, such as the official German fortification records (*Taktische Übersichte der Festungsbereich Jersey*) held by the Société Jersiaise or the Building Progress Reports (*Baufortschrittmeldungen*) held by the National Archives & Records Service in the USA. This should be considered for future research.

This part of the Conservation Statement is in three sections. In (1.2) the history of the building is outlined. Section (1.3) provides a description which is supported by room data sheets in appendix 1. Section (1.4) considers the values and significance of the property.

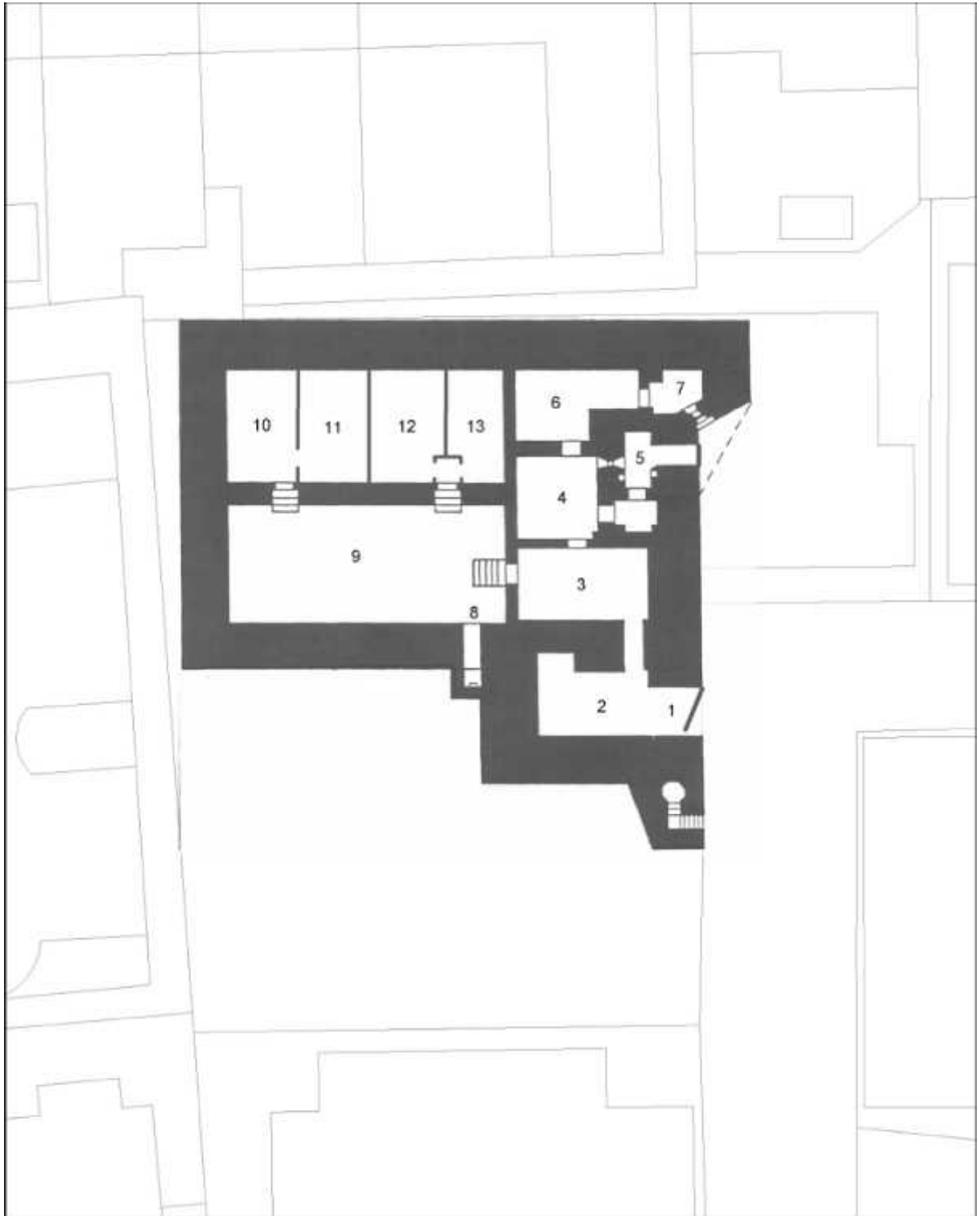


Figure 2: Composite plan of the property 1:200 (after Burnal and McKenzie)

1.2 Historical Overview

1.2.1 German Occupation period

In the Spring of 1940 the British Military authorities laid a new submarine telephone cable linking Jersey with France in order to improve communications between the British expeditionary force and London. The cable ran from Pirou in Normandy to Fliquet Bay in Jersey. Shortly after the cable had been laid it was cut as the German army began its advance on Western France. When the Germans landed in Jersey, the cable was reconnected to improve communications with Berlin. The signal however was weak and needed boosting so a repeater station (*Verstärkungsamt*) was built in Trinity Road, St. Helier, at the rear of Springfield Crescent. Building commenced in October 1943 and was completed by May 1944. The repeater station was probably in use for about two months until the adjacent French coast was under American control and the underwater cable was severed again (Ginns, 1999).

1.2.2 Post War period

For some years after the war the bunker was used by the Leonis Boxing Club until taken over by the States on 31st October 1959. The German Occupation Bunker was acquired for £1,000 from Mrs Beatrice Jane Jocelyn, nee Werrin. The bunker had been sold to Mrs Jocelyn for £50 pursuant to an Act of the Assembly, dated 6th October 1948. Part of a garden at Trinity Road was acquired on the 25th October 1963 for £600 from Mrs Beatrice Jane Jocelyn, nee Werrin. The garden originally was part of 2 Springfield Crescent. The area was being used as a yard by "F. J. Laurent Motor Repairs". This is now the car park to the North, at the Civil Defence Bunker. The Public have a right of way over

the access road to the bunker, which in 1963 was owned by a Mrs Lillie A Morris of "Rock View", Pontac, St Clement. In 2009 it is thought to be in the ownership of Mr Basil Toudic, the owner of "F. J. Laurent Motor Repairs". Civil Defence matters were transferred to Finance and Economics on the 1st January 1996 and it is likely that this was when the bunker ceased operation as the States of Jersey Civil Emergency Centre and Nuclear Monitoring Station.

1.3 Description

1.3.1 Exterior and roof

The form and layout of the telephone repeater station bunker is substantially as constructed with a few modifications having taken place to facilitate use as a Civil Emergency centre. Housing surrounds the building and there is a small gated car park to the north. The eastern and northern outer walls have not been modified since construction apart from addition of security fencing at roof level, which runs around the perimeter of the structure. Private dwellings prevented access to the southern wall.

The west facing wall is partially obscured by modern garages at its southern end. These cover the original blocked door and a blocked loophole that formed part of the defences of the entrance area (figure 3). The entrance in the central section of this wall was formerly an open aperture leading into original generator room. This is the current entrance. To the north of the door is a buttress like appendage that appears to be a later addition for protecting and carrying services to the roof where the water cistern and emergency generator are located (figure 4).

At the northern end of the wall is the entrance to a 'Tobruk' position on the roof. Between it and the 'buttress' is an inlet vent for the German air system. Access to the roof is via the steps up to the Tobruk position. This appears to be a type 202 with a circular aperture (figures 5 & 6).

There are three structures on the roof, a water cistern and two plant rooms that house a standby generator and air ventilation and filtration unit that blows purified air through a network of ventilation trunking running into each room in the bunker (figure 7). The plant rooms have communications antennae attached and adjacent to it the remains of a collapsed mast. These are post Occupation in date. There are a number of pipes exiting through the roof that may have been part of the ventilation system, some of these have been damaged by vandals and water has been leaking into the dormitory below. Parts of the roof have been colonised by lichen, ivy and buddleia (figure 8).

The original German structure was built to withstand artillery attack and is structurally sound apart from the leak in the roof noted above. The western façade has been painted but much of this is peeling off a process accelerated by the vegetation on the roof inhibiting drainage and causing staining. The roof of the plant room is in poor condition and the exterior paint is eroded. The condition of this structure will be further described when the interior is discussed.

1.3.2 Interior (number and letter refer to appendix 1 room data sheet images)

Entrance to the bunker is through a heavy steel entrance blast door through the former open room that held the German generator

(1a). The door was manufactured by Geilinger AG, Elgg, Switzerland and is date stamped 12 83 (1b). To the left of the door is a mains electricity junction box which appears to of recent manufacture (1c). The former generator room has been subdivided and contains two flushing WC cubicles and a decontamination area consisting of two showers (2a), two urinals (2b) and a hand basin. The alcove (40 on the CIOS plan) is currently used for storage (2c). An original two-part German steel gas tight door leads from here into the bunker (3a). Apertures and some ducting for the original German ventilation system can be seen in many of the rooms.

The first room entered is described as a reception / information room with a counter and a long table with telephones, chargers and a computer (3c). A cupboard behind this table contains communications equipment. Against the opposite wall a cupboard houses torches and a teapot of 1980s vintage, books (mainly novels) related to espionage and the Cold War and multiple copies of the Emergency Measure Plan in A4 ring binders. A corner of the room has been portioned off as a store (3d). An SX50 ECN unit is mounted on the wall close to the counter (3b).

From the reception room is the canteen/ mess. To the right is the kitchen / galley which is located in the original entrance corridor and air lock. The two steel air lock doors are still in place and fixed open (4a). The small kitchen has a 1960's Belling electric cooker, hot water dispenser, a wooden shelf for utensils and a small cupboard for crockery and cutlery (5a).



Figure 3: Garages built against west wall and blocking original entrance



Figure 4: Modern entrance through German generator room



Figure 5: Car park entrance and access door to Tobruk position on roof



Figure 6: Tobruk position



Figure 7: Car park and north wall, later Plant Rooms on roof



Figure 8: Generator Room from the west, the water cistern is to the left of this room

CIVIL EMERGENCY CENTRE

In the short entrance corridor beyond the air lock is a small stainless steel sink and draining board and a water heater (5b). A dog leg to the right leads to the now blocked entrance which contains several portable siren units (5c). Opposite the entrance and designed to protect it is a loophole suitable for a machine gun or small arms (5d).

From the canteen / mess another door leads into the 'L' shaped unisex dormitory with four wooden triple bunks still in place (6a). Foam mattresses are stored on some of the bunk beds (6b) and a cupboard contains UK government issue blankets and assorted stationary typical of the 1980s (6c). At the far end of the dormitory there is another German gas door (7a) and beyond that a small room with a blocked loophole in the wall which was a defensive firing position covering the bunker entrance (7b). The loophole has now been blocked and the room converted into a ladies washroom with two hand basins and a sanitary towel disposal unit. There has been some water ingress through the roof as a result of damage by vandals. A temporary repair has been made.

Returning to the reception area from here there is access down a short flight of stairs to the operations and training room for the Emergency Centre. These were formerly the equipment rooms for the telephone signal repeater apparatus. On entering room (9) to the left and right (west wall) are partitioned acoustic booths for individual signals operators equipped with telephones; one of these is labelled as the "French Liaison" desk (9a/9b).

On the north wall adjacent to one of these desks is a small hatch (8a) that opens to reveal an emergency access tunnel to the

roof (8b). This now carries cabling and has collected rubbish at the junction with the vertical shaft that has metal looped steps up to the plant room. This is an original German structural feature. There are various situation boards fixed to the walls together with local and regional maps depicting exercises (9c). There are also details of red and black warnings. The north wall is covered with fibreboard and this has absorbed damp from the outer wall and is deteriorating at the base (9d). What appear to be oil filled electric heaters run along the base of the walls. Entering the room one has an eerie sensation of stepping back to a moment frozen in time (9e). This is a powerful emotion for those who experienced the Cold War (9f/9g). The contents of the room are not listed here but see archive report (appendix 2).

There are two further short flights of steps into what was another large German equipment room (9h). This has now been subdivided into 4 rooms. The steps at the back of the room lead into the meteorological room (10a) which still has a bank of redundant printers, a fax machine and other equipment. A door leads from this room into a store which includes a stock of Plessey PDRM82 dosimeters (11a), gas masks (11b) and protective suits.



Figure 9: Damaged intact roof fittings

The second set of steps from the Operations Room leads through a small lobby into the BBC Studio and Control Room with a red 'on air' light above the door. It is from here that the Bailiff would have broadcast to the island. The studio itself is largely empty, apart from a shelving unit containing box files of administrative records, with acoustic tiles falling off the ceiling (12a/12b). It has a large table in front of the window looking into the control room with cables for a microphone (Mic 1).

The control room also doubles as a 'self op' studio and is still fully equipped with similar equipment to that found in all 1980's RGHQ's. This includes an Audix mixer, AKG D202 Microphone (Mic 1), UHER reel to reel portable tape recorder, Revox reel to reel studio tape recorder, Sony professional cassette recorder, Marantz cassette recorder, two Technics SP1200 record decks, Technics tuner, lip microphone, loudspeaker, clock and a floor standing 19" rack of line interface equipment; all incoming and outgoing audio lines pass through this unit (13a/13b).

There is a stack of LP records, all from the 50's and 60's, supplied by the BBC when the studio was installed and a selection of 'radio play' (no needle time) themed (male artists, female artists, etc.) music cassettes (13c). On a small shelf are the nuclear warning cassettes provided by the Home Office. The studio was linked to the BBC's radio transmitter at Les Platons.

The archival material held at the Civil Defence Emergency Centre has been surveyed by staff at Jersey Archive and a list of files and recommendations can be seen in appendix 3 which also contains recommendation for conservation. It is not

clear if these recommendations have been implemented.

1.3.3 Roof

The two plant rooms on the roof are linked internally (see plan in appendix 3). Upon entering the first room is almost totally filled by a diesel generator that until recently was regularly maintained (14a). Water seepage through the roof has led to plaster flaking on landing on the generator (14b). This deterioration is also present in the adjoining room where plaster is falling on to a Vokes Unipak air filtration and pumping unit (15a: 15b). Adjacent to this is a covered opening in the floor that leads down to the escape shaft (15c). See appendices 3 and 4 for plans. These are dated 1963 and construction probably followed shortly after.

1.4 Assessment of Significance

1.4.1 Historical values

The building is of historical significance for being a rare example of a German telephone repeater station (*Verstärkungsamt*) and the only one on Jersey. It was part of a network of communications bunkers on Jersey which included telephone exchange bunkers (*Netzknotenpunkte*) and cable switch positions (*Kableschaltstellen*). Its construction has a documented historical context in that it was built in response to the severing of the submarine cable linking Jersey to Europe in 1940 which when reconnected following the invasion of the island failed to provide a strong enough signal for contact with Berlin.

Although within living memory the secondary use of the bunker as a States of Jersey Civil Emergency Centre and Nuclear Monitoring Station during the Cold War

places it within the wider civil defence structure of Western Europe. The Cold War was a 40-year long stand-off between the Superpowers - the United States and the Soviet Union - which defined the world's political map for most of the second half of the 20th century.

1.4.2 Architectural values

The architectural value of the German telephone repeater station bunker lies in the intact original room layout and architectural fittings (blast doors and ventilation ducting). Further unidentified feature may exist behind the later 20th century wall coverings in the operations rooms.

1.4.3 Social values

The social value of the property is the completeness and undisturbed nature of the contents which have not been seen by the public and capture a moment in time. Preservation and recording would add considerably to residents and visitors growing knowledge base and understanding of the island's and European history. It has value as an educational resource and has played a key role in the governance of Jersey.

1.4.5 Economic value

The economic value of the building and contents is in its potential for providing a tourist function, enhancing and diversifying Jersey's tourism offer. There is potential to create a unique visitor experience that will appeal to historians, military enthusiasts and the general public.

1.4.6 Setting and townscape value

The value has been diminished by the construction of modern garages that obscure the former entrance and defensive loophole. The original setting of the bunker

has been eroded by the surrounding urban development. In contrast though the setting emphasises the important civil defence role of the Emergency Centre.

1.4.7 Statement of significance

This Conservation Statement has established that the Civil Emergency Centre and Nuclear Monitoring Station is of significance to Jersey and internationally:

- As a good example, and rare survival, of a German telephone repeater station (*Verstärkungsamt*) with an intact interior room layout and fittings.
- A rare survival of virtually undisturbed interior contents of Cold War Civil Emergency Centre.
- As a place designated by the States of Jersey as a Grade 2 Listed Building.
- As a key component in the Western European civil defence network with particular relevance to France and the United Kingdom.
- As an educational resource to inform people of how Jersey planned to respond to nuclear war or radiation leak in the 20th century.
- For its potential economic value as visitor attraction of the island.

2 Conservation Policies

This part of the Conservation Statement indicates how the various individual values placed on the property are vulnerable to damage, and then proposes a series of Conservation Statement Policies, which should ensure that the significance and values of the property are protected and, wherever possible, enhanced for public enjoyment and benefit.

The framework of policies seeks to:

- Preserve and enhance the significance of the historical building and its setting for future generations, and ensure that all conservation work is undertaken in strict accordance with international best practice;
- Guide management proposals for the preservation and future development of the property as a heritage and educational asset;
- Ensure that the property can be maintained as a sustainable heritage asset for the foreseeable future. The conservation policies that are set out are intended to ensure an adequate balance between all the values placed on the property during its ongoing management and in any future proposals to develop it; conserving Civil Emergency Centre and Nuclear Monitoring Station as a heritage asset to the highest possible standards, whilst securing maximum benefit to the community. For the purposes of the Statement, the term development includes repair, restoration, interpretation, and the provision of facilities to encourage and improve public enjoyment and sustainability.

2.1 Vulnerability

The Civil Emergency Centre and Nuclear Monitoring Station is owned and protected by the States of Jersey with very limited access to the interior.

The external fabric of the building appears to be in very good condition. The only visible evidence of vulnerability is on the roof where damage has been caused by vandalism and in the plant rooms by water ingress and damp.

Surrounding trees and modern developments provide easy access to the roof with a subsequent risk of vandalism or theft of plant room fittings.

Internally there are small areas of dampness on the ceilings and between later partitions and the original walls.

The contents are vulnerable to disturbance, theft and misinformed 'tidying up'. The value of the contents as a historical resource will not be recognised by some people as they will be familiar to them.

2.2 Conservation philosophy and objectives

The policies set out in this Conservation Statement seek to ensure compliance with international and States of Jersey laws, planning policies, principles, guidelines, and best practice concerning the conservation and development of historic properties. In particular the policies pertaining to Listed Buildings and Places in the Island Plan (2011) and Planning Advice Note 6: Managing Change in Historic Buildings (2008).

There are also a range of policies, principles, and guidelines for the care of heritage sites and these are set out in a range of international documents. Clear policies for repair and restoration are set out in the international Venice Charter (1964) and the ICOMOS specialist charters, in particular the Australian ICOMOS Burra Charter (1979 – revised in 1981 and 1988), whilst the Convention for the Protection of the Architectural Heritage of Europe (Granada 1988) and the European Convention on the Protection of Archaeological Heritage (Valetta 1992), both signed by the States of Jersey, are more concerned with sustainable access and interpretation. The British Standard Guide to the principles of the conservation of historic buildings (BS 7913:1998) is a valuable standard in that it sets out general conservation principles relating to historic buildings as well as providing definitions of terminology. English Heritage's advisory publication *Informed Conservation* (Clark, 2001) makes a series of valuable suggestions on understanding historic buildings.

The following key principles are adapted in this Conservation Statement for the Civil Emergency Centre and Nuclear Monitoring Station:

- The qualities of later additions and changes to the fabric and layout of the structures on the site should be recognised and conserved as layers in the history of the development of the property.
- In exceptional circumstances, where structures, fabric or layout belonging to a certain period need to be prioritised, then these should be in favour of the structures and fabric belonging to the first stage of development of the property in 1944.
- Proposals to remove significant historic fabric must be justified in terms of the relevant planning policies and conservation best practice, as well as in the light of maintaining the physical, visual and structural integrity of the bunker.
- No attempt should be made to restore or reinstate historic fabric where there is no firm evidence backing such conjecture.
- Conservation interventions should be reversible and, wherever possible, should seek to retain historic fabric.

2.3 Conservation Statement Policies

2.3.1 Cultural policies (conservation)

Policy CP1: Meet legal and statutory requirements having regard to Jersey Heritage's obligations to the States of Jersey to comply with the Island's laws; with policies contained in the Island Plan; and with supplementary planning guidance.

Implementation

CP1.1 Satisfy local planning requirements, and particularly policies relating to registered historic buildings.

CP1.2 Comply with local building byelaws as far as they are relevant.

CP1.3 Comply with Health and Safety at Work (Jersey) Law (1989).

CP1.4 Comply with provisions of environmental health legislation.

Policy CP2: All conservation work should be carried out in accordance with the conservation philosophy stated in this document and conservation good practice, as outlined in national guidelines and international conventions.

Implementation

CP2.2 Employ suitably qualified professionals to prepare specifications and to supervise all works.

CP2.3 Employ appropriately skilled and qualified contractors and craftspeople with experience of similar conservation work for all repairs.

CP2.5 Ensure access arrangements for conservation and maintenance works are carefully planned so as to cause the least damage to the historic fabric, while ensuring all visitor management and health and safety provisions are adequately met.

CP2.6 Ensure conservation proposals relate to the management and interpretation of the property.

Policy CP3: Make decisions concerning repair and restoration based on the best available information about the original fabric and form of the property.

Implementation

CP3.1 Undertake appropriate levels of research prior to the commencement of repairs or restoration works. This might range from archival research to the specialist study of materials.

CP3.2 If any new works are proposed which might adversely affect historic fabric, seek to mitigate those affects either by a change of

design or, as a last resort, by recording historic fabric before it is removed.

Policy CP4: Employ the most appropriate materials and methods of construction in all repairs and works of restoration.

Implementation

CP4.1 Ensure techniques employed for conservation works are those methods recommended by reputable conservation bodies and institutions.

CP4.2 Whenever possible, use traditional, like-for-like, materials and methods for all repairs and restoration works. It may be necessary to employ the use of specialist materials and conservation repairs techniques that may not be available in Jersey. For these reasons it may sometimes be necessary to source materials and craftsmen with appropriate skills outside Jersey.

CP4.3 The use of modern materials as an expedient during repair is not considered good practice. However, if no alternative course of action is available then they should be capable of being removed without damage to the historic fabric.

CP4.4 Where modern materials have been used previously and are seen to be harming the fabric or integrity of the historic building, and where removal will not cause further damage, then these should where possible be removed and new repairs using traditional materials and techniques implemented.

Policy CP5: Ensure that the historic property and its integrity, including any below ground material of archaeological value, are not adversely affected by alterations, new development or the provision of services.

Implementation

CP5.1 Any investigation or excavation must be based on a thorough understanding of the site and commenced only after sufficient desk-based assessment has been carried out.

CP5.2 Maintain and implement a strategy whereby services are installed with a minimal loss of historic fabric and in routes where they are accessible for future work.

CP5.3 Means of maintaining necessary environmental and security conditions to be designed and executed in a way so as not to harmfully impact on the historic fabric.

CP5.4 Wherever possible, ensure that functions and services that may adversely affect the historic significance and integrity of the property are placed elsewhere.

Policy CP6: Mitigate risks and vulnerabilities affecting the cultural significance of the property by taking appropriate and timely actions.

Implementation

CP6.1 Prepare a detailed risk assessment to identify areas at risk from fire, extreme weather, high winds, heavy rainfall and flooding, and include preventative measures in the property maintenance plan.

Policy CP7: Ensure the long-term sustainability of the fabric by maintaining

consistent records of research and work undertaken at the property.

Implementation

CP7.1 Ensure that a record is made of all alterations to the fabric, including ongoing maintenance, repair and servicing works, and that this is deposited in an appropriate off-site archive and a copy maintained on site.

CP7.2 Ensure these records are regularly updated.

Policy CP8: Encourage the dissemination of information on the history and architecture of the building.

Implementation

CP8.1 Promote further research into the property, particularly from archival sources held by the Société Jersiaise, Jersey Archives the Defence Committee minutes (these are closed for 75 years and permission would be required from the States Greffe to access them).

CP8.2 Investigate options to undertake non-destructive surveys to determine changes in the interior layout and the age of various components.

2.3.2 Social policies

Policy S1: Convey the significance and values of the site in various forms of interpretation and activities at the site.

Implementation

SP1.3 Provide a good range of interpretation facilities that will enhance the visitor experience, whilst maintaining the integrity of the historic property. SP1.2 All interpretation should be informed by the collections management policies of Jersey Heritage.

SP1.3 When major conservation works are being undertaken, the works and their purpose should be conveyed to visitors, including provision of indirect or managed direct access.

Policy S2: Maintain a good provision of physical, social and intellectual access to the property that will promote its significance and values to a wide audience.

Implementation

SP2.1 Produce interpretive material that is easily available and accessible to a range of audiences, and considers those with physical and non-physical disabilities.

SP2.2 Designs and strategies to ensure the safety of all users of the site should be in keeping with the property and its setting, as defined in this Conservation Statement.

SP2.3 In undertaking access improvements, the presumption should be in favour of the preservation of the historic fabric, unless a convincing case can be made for alteration. Reasonable alternatives should be considered before alterations are permitted to the historic fabric.

2.3.3 Economic policies

Policy E1: To manage and develop the Civil Emergency Centre as a sustainable heritage asset as an integral part of Jersey's history to the benefit of the local community and visitors to the island.

Implementation

EP1.3 Undertake necessary and urgent repairs based on available funding.

EP1.2 Manage the property in a way that maximises income from all existing sources, without damaging the authenticity and integrity of the building.

EP1.3 Seek to identify and secure additional sources of revenue income.

2.3.4 Implementation and review

States of Jersey intends to implement the Conservation Statement Policies during its management of Jersey Civil Emergency Centre, Trinity Road, St. Helier and comply with them during any future proposals to conserve and interpret the building.

The Conservation Statement should be reviewed at appropriate times in order to ensure compliance with changing circumstances, changing approaches to conservation, change of use and changing visitor needs should the building be opened to the public.

Sources Consulted

Clark, C. M. (2001). Informed Conservation: understanding historic buildings and their landscapes for conservation. London: English Heritage.

Convention for the Protection of the Architectural Heritage of Europe (Granada 1985)

European Convention on the Protection of the Archaeological Heritage (Revised 1992)

Ginns, M. (1999). Jersey's German Bunkers (Vol. Archive Book No. 9). St. Ouen: Channel Islands Occupation Society (Jersey).

International Charter for the Conservation and Restoration of Monuments and Sites (The Venice Charter) - 1964

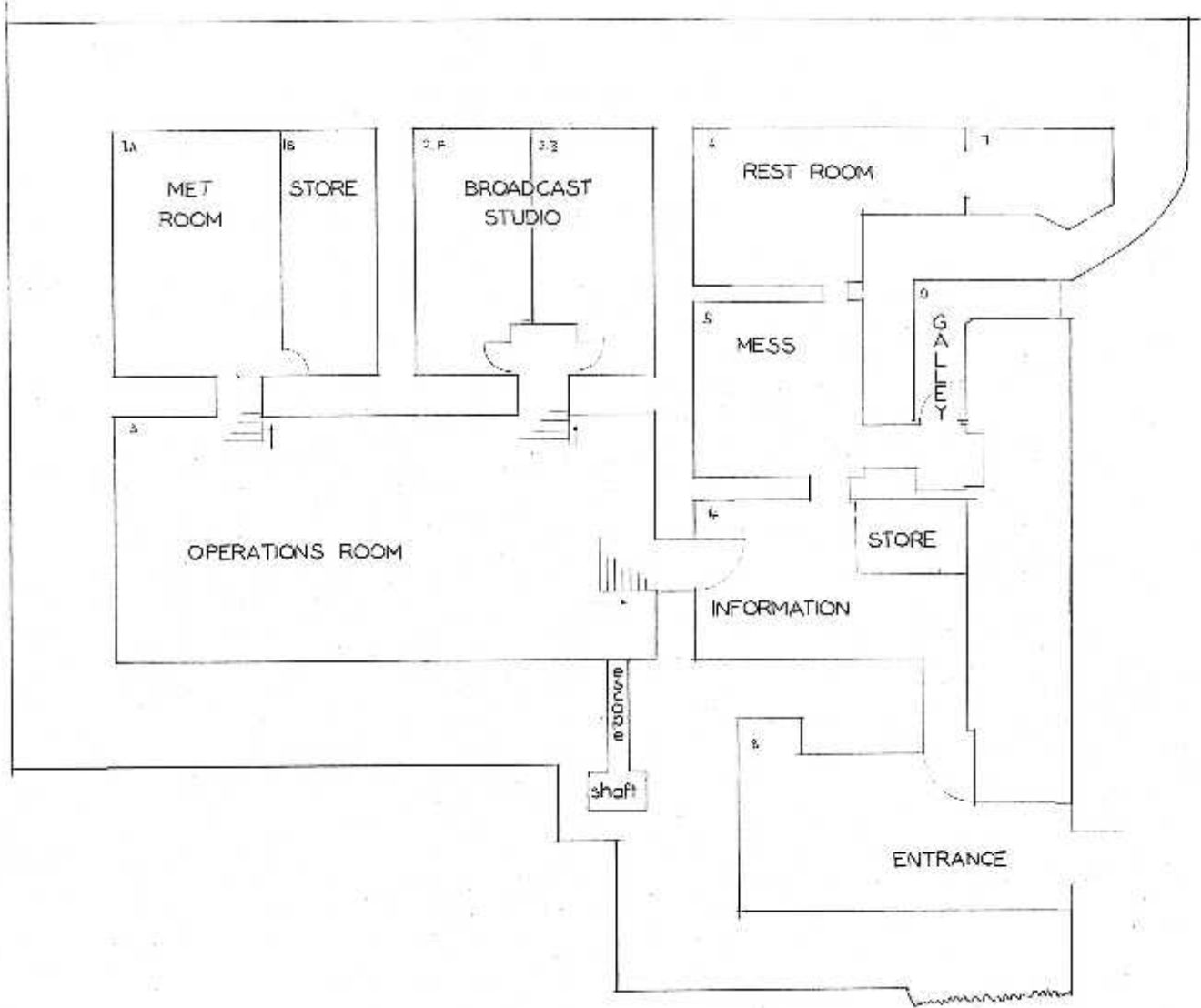
Subterranea Britannica (2002).

http://www.subbrit.org.uk/rsg/sites/j/Jersey_civil_e_c/index.html [Accessed 09/05/2013]

The Burra Charter (The Australia ICOMOS Charter for Places of Cultural Significance 1999)

PLAN OF GERMAN BUNKER
TRINITY ROAD

SCALE 1" = 1'-0"



Room No.	1	Previous Use	Generator room
Room Name	Entrance	Current Use	Entrance lobby

Floor	Concrete
Ceiling	Cast concrete with steel reinforcement, painted
Walls	Cast concrete, painted
Windows	
Doors	Steel blast door by Geilinger to exterior
Fixtures	
Built in Furniture	

German Occupation 1943-1944	Original two-part German steel gas tight door leads from here into the bunker (3a). Apertures and some ducting for the original German ventilation system
States of Jersey Civil Defence	
Significance / contribution to significance	Original German features and fittings



a



b



c

Room No.	2	Previous Use	Generator room
CIOS Room No.	30 / 40	Current Use	Decontamination room

Floor	Concrete
Ceiling	Cast concrete with steel reinforcement. painted
Walls	Cast concrete, painted
Windows	
Doors	
Fixtures	Two urinals, one shower
Built in Furniture	

German Occupation 1943-1944	
States of Jersey Civil Defence	Two flushing WC cubicles and a decontamination area consisting of two showers (2a), two urinals (2b) and a hand basin
Significance / contribution to significance	Original civil defence features and fittings



a



b



c

Room No.	3	Previous Use	
CLOS Room No.	13	Current Use	Information

Floor	Concrete with carpet
Ceiling	Cast concrete with steel reinforcement, painted
Walls	Cast concrete, painted
Windows	
Doors	Original two-part German steel gas tight door
Fixtures	
Built in Furniture	

German Occupation 1943-1944	Steel air lock door
States of Jersey Civil Defence	Communications equipment

Significance / contribution to significance	Original German features and fittings, original civil defence features and fittings
--	---



a



b



c



d

Room No.	4	Previous Use	
CIOS Room No.	10	Current Use	Canteen/Mess

Floor	Concrete, linoleum
Ceiling	Cast concrete with steel reinforcement, painted
Walls	Cast concrete, painted
Windows	
Doors	Original two-part German steel gas tight door
Fixtures	
Built in Furniture	

German Occupation 1943-1944	Two steel air lock doors
States of Jersey Civil Defence	

Significance / contribution to significance	Original German features and fittings
--	---------------------------------------



a

Room No.	5	Previous Use	Entrance
CIOS Room No.	2	Current Use	Kitchen

Floor	Concrete, linoleum
Ceiling	Cast concrete with steel reinforcement, painted
Walls	Cast concrete, painted
Windows	Defensive loophole, blocked
Doors	Original two-part German steel gas tight door
Fixtures	Electric water heater
Built in Furniture	Kitchen unit and stainless steel sink

German Occupation 1943-1944	Loophole suitable for a machine gun or small arms
States of Jersey Civil Defence	

Significance / contribution to significance	Original German features and fittings, original civil defence features and fittings
--	---



a



b



c



d

Room No.	6	Previous Use	
CIOS Room No.	4	Current Use	Dormitory/Rest Room

Floor	Concrete, carpet
Ceiling	Cast concrete with steel reinforcement, painted
Walls	Cast concrete, painted
Windows	
Doors	
Fixtures	
Built in Furniture	

German Occupation 1943-1944	German gas door and beyond that a small room with a blocked loophole in the wall which was a defensive firing position covering the bunker entrance
States of Jersey Civil Defence	Unisex dormitory with four wooden triple bunks still in place. Foam mattresses are stored on some of the bunk beds and a cupboard contains UK government issue blankets and assorted stationary typical of the 1980s
Significance / contribution to significance	Original German features and fittings, original civil defence features and fittings



a



b



c

Room No.	7	Previous Use	
CLOS Room No.	3	Current Use	Ladies toilet

Floor	Concrete, linoleum tiles
Ceiling	Cast concrete with steel reinforcement, painted
Walls	Cast concrete, painted
Windows	Defensive loophole, blocked
Doors	Original two-part German steel gas tight door
Fixtures	Porcelain sink
Built in Furniture	

German Occupation 1943-1944	German gas door and beyond that a small room with a blocked loophole in the wall which was a defensive firing position covering the bunker entrance
States of Jersey Civil Defence	
Significance / contribution to significance	Original German features and fittings



a



b

Room No.	8	Previous Use	Escape Shaft
CIOS Room No.	5	Current Use	Escape Shaft

Floor	Concrete, carpet
Ceiling	Cast concrete with steel reinforcement, painted
Walls	Cast concrete, painted
Windows	
Doors	
Fixtures	
Built in Furniture	Acoustic booths

German Occupation 1943-1944	Emergency access tunnel to the roof
States of Jersey Civil Defence	Partitioned acoustic booths for individual signals operators equipped with telephones

Significance / contribution to significance	Original German features and fittings, original civil defence features and fittings
--	---



a



b

Room No.	9	Previous Use	Equipment Room
CIOS Room No.	51 west wall	Current Use	Operations Room

Floor	Concrete, carpet
Ceiling	Cast concrete with steel reinforcement, painted
Walls	Cast concrete, painted
Windows	
Doors	
Fixtures	
Built in Furniture	Acoustic booths

German Occupation 1943-1944	
States of Jersey Civil Defence	Partitioned acoustic booths for individual signals operators equipped with telephones

Significance / contribution to significance	Original German features and fittings, original civil defence features and fittings
--	---



a



b

Room No.	9	Previous Use	Equipment Room
CIOS Room No.	51 south wall	Current Use	Operations Room

Floor	Concrete, carpet
Ceiling	Cast concrete with steel reinforcement, painted
Walls	Cast concrete, painted
Windows	
Doors	
Fixtures	
Built in Furniture	

German Occupation 1943-1944	
States of Jersey Civil Defence	Original civil defence features and fittings

Significance / contribution to significance	See next sheet
--	----------------



c



d

Room No.	9	Previous Use	Equipment Room
CIOS Room No.	51 north wall	Current Use	Operations Room

Floor	Concrete, carpet
Ceiling	Cast concrete with steel reinforcement, painted
Walls	Cast concrete, painted
Windows	
Doors	
Fixtures	
Built in Furniture	

German Occupation 1943-1944	
States of Jersey Civil Defence	Original civil defence features and fittings

Significance / contribution to significance	This room one has an eerie sensation of stepping back to a moment frozen in time. The walls are covered with charts and posters creating a powerful impact
--	--



e



f



g



h

Room No.	10	Previous Use	Equipment Room
CIOS Room No.	51	Current Use	Metrology Room

Floor	Concrete, carpet
Ceiling	Cast concrete with steel reinforcement, painted
Walls	Cast concrete, painted
Windows	
Doors	
Fixtures	
Built in Furniture	

German Occupation 1943-1944	
States of Jersey Civil Defence	Original civil defence features and fittings

Significance / contribution to significance	An array of 1980s computer equipment and nuclear defence protective attire and equipment
--	--



a

Room No.	11	Previous Use	Equipment Room
CIOS Room No.	51	Current Use	Storeroom

Floor	Concrete
Ceiling	Cast concrete with steel reinforcement, painted
Walls	Cast concrete, painted and wooden partitions
Windows	
Doors	
Fixtures	
Built in Furniture	

German Occupation 1943-1944	
States of Jersey Civil Defence	

Significance / contribution to significance	Stored civil defence equipment, individually the objects are of interest but when seen stored as multiple items they have more significance
--	---



a



b

Room No.	12	Previous Use	Equipment Room
CIOS Room No.	51	Current Use	Broadcast Studio

Floor	Concrete, carpet
Ceiling	Cast concrete with steel reinforcement, painted, acoustic tiles
Walls	Cast concrete, painted and wooden partitions
Windows	Double glazed in partition wall between studio and control room
Doors	
Fixtures	
Built in Furniture	

German Occupation 1943-1944	
States of Jersey Civil Defence	Stack of LP records, all from the 50's and 60's, nuclear warning cassettes

Significance / contribution to significance	Intact room with multiple with intact furnishings and equipment, the card index provides a temporal and cultural context
--	--



a



b

Room No.	13	Previous Use	Equipment Room
CIOS Room No.	51	Current Use	Broadcast Control Room

Floor	Concrete, carpet
Ceiling	Cast concrete with steel reinforcement, painted
Walls	Cast concrete, painted and wooden partitions
Windows	Double glazed in partition wall between control room and studio
Doors	
Fixtures	
Built in Furniture	

German Occupation 1943-1944	
States of Jersey Civil Defence	Equipment includes an Audix mixer, AKG D202 Microphone (Mic 1), UHER reel to reel portable tape recorder, Revox reel to reel studio tape recorder, Sony professional cassette recorder, Marantz cassette recorder, two Technics SP1200 record decks, Technics tuner, lip microphone, loudspeaker, clock and a floor standing 19" rack of line interface equipment; all incoming and outgoing audio lines pass through this unit

Significance / contribution to significance	Intact room with multiple with intact furnishings and equipment, the records provide a temporal and cultural context
--	--



a



b



c

Room No.	14	Previous Use	None
Room Name	Plant Room	Current Use	Generator Room

Floor	Concrete, the roof of the German bunker
Ceiling	Concrete
Walls	Concrete
Windows	
Doors	Steel
Fixtures	Diesel generator
Built in Furniture	

German Occupation 1943-1944	
States of Jersey Civil Defence	Diesel generator probably in working order

Significance / contribution to significance	
--	--



a



b

Room No.	15	Previous Use	None
Room Name	Air Plant Room	Current Use	Air Plant Room

Floor	Concrete, the roof of the German bunker
Ceiling	Concrete
Walls	Concrete
Windows	
Doors	
Fixtures	Vokes Unipak air filtration and pumping unit
Built in Furniture	

German Occupation 1943-1944	Opening in the floor that leads down to the escape shaft
States of Jersey Civil Defence	Air filtration and pumping unit

Significance / contribution to significance	Intact equipment still in situ
--	--------------------------------



a



b



c

Survey of Archive Material held at the Springfield Bunker

16/08/2007 – 23/08/2007

General Recommendations

The archival material held at Springfield Bunker has been surveyed and a list of files and recommendations can be seen below.

The majority of the files included many duplicate copies of the same information and in this case we would recommend that only one copy of the material be transferred to the Archive for long-term preservation.

The archival material did not appear to contain any personal information which would necessitate closure of the records to public access for a long period of time (usually 100 years). An appropriate closure period based on the importance of the records as sources of information on the defence of the Island can be discussed.

Given the conservation report below we would recommend that material identified as being suitable for transfer to the Jersey Archive be collected by Archive staff as soon as is convenient.

Conservation Report

Relative humidity levels in the bunker (16/08/2007) were in excess of 70%. There were extensive outbreaks of mould on paper, plastics and fabric. There was mould coverage on the majority, if not all, the paper based material. The box files holding the documents had extensive, active mould growth (both inside and outside the boxes), whilst the papers inside appeared to be less impacted. Silverfish were seen in one box and the papers inside had been grazed, which considering the humidity levels and mould growth, was an unexpected low level of insect damage. All documents (and packaging material) to be retained will need to be dried and cleaned before being put on display and/or storage.

If original paper-based material is to remain at the site the humidity levels will have to be reduced and the documents air-dried, cleaned and copied.

Staff working with mouldy documents should wear appropriate protective clothing and masks.

Records held in the Broadcasting Room

One top of shelf three there is a map of Jersey showing the Parish Boundaries.

Files all date from 1960s – 2000s.

Ref	File Title	Duplicates	Recommendations
G/1	Planning Assumptions (General) – Empty	No	
G/2	Chain of Control	Yes	One copy of each document to Archive
G/3	C.E. Org Tasks	Yes	One copy of each document to Archive

G/4	Control Section Duties	Yes	One copy of each document to Archive
G/5	Parish Section Establishment	Yes	One copy of each document to Archive
G/6	Committee Responsibilities	Yes	One copy of each document to Archive
G/7	Summary of Control Ops Tasks	Yes	One copy of each document to Archive
G/8	Effects of Nuclear Explosion	Yes	One copy of each document to Archive
G/9	Biological Effects	Yes	One copy of each document to Archive
G/10	Protective Measures	Yes	One copy of each document to Archive
G/11	Radiation Control Doses	Yes	One copy of each document to Archive
G/12	Check Points for Setting up Control Centre	Yes	One copy of each document to Archive
G/13	Distribution and Filing at Control Centre	Yes	One copy of each document to Archive
G/14	Message Writing (Two Files)	Yes	One copy of each document to Archive
G/15	Preparation and Issue of Situation Reports	Yes	One copy of each document to Archive
G/16	Priority in Telling Nuclear Blasts	Yes	One copy of each document to Archive
G/17	Monitor Post Fall Out Reporting	Yes	One copy of each document to Archive
G/18	Maintenance of Fall Out Log Charts	Yes	One copy of each document to Archive
G/19	Maintenance of Operational and Monitor Post Logs	Yes	One copy of each document to Archive
G/20	Provision of Advice by Scientific Staff	Yes	One copy of each document to Archive
G/21	Public Survival Under Fall Out Conditions	Yes	One copy of each document to Archive
G/22	No Title – File Empty	No	
G/23	Improvised Methods of Obtaining Bomb Burst Data	Yes	One copy of each document to Archive
G/24	No Title – File Empty		
G/25	Principles of Operating Emergency Information Services	Yes	One copy of each document to Archive
G/26	Map References and Plotting	Yes	One copy of each document to Archive
G/27	Fall Out Protective Values	Yes	One copy of each document to Archive
G/28	Effects of Nuclear Weapon Data	Yes	One copy of each document to Archive
G/29	Notes on Choosing and Equipping Fall Out Room	Yes	One copy of each document to Archive
G/30	Scientific Advisers Training Notes	Yes	One copy of each document to Archive
G/31	Briefing	Yes	One copy of each document to Archive

G/32	Operation of Radiac Instruments and Calculators	Yes	One copy of each document to Archive
G/33	Use of Radiac Sources	Yes	One copy of each document to Archive
G/34	No Title – File Empty		
G/35	Description and Operation of Fixed Survey Meter Trainer	Yes	One copy of each document to Archive
G/36	Procedure for Reporting and Recording Fall Out	Yes	One copy of each document to Archive
G/37	Distribution of Radiac Instruments Battery Requirements	Yes	One copy of each document to Archive
G/38	C.E. Coms Block Diagram – File Empty		
G/39	Operation of Telephone Switchboard – File Empty		
G/40	Procedure for Line Testing and Fault Reporting	Yes	One copy of each document to Archive
G/41	Notes on Operation of Radio Net and Quiz	Yes	One copy of each document to Archive
G/42	No File		
G/43	Operation of Benkson Intercom Units	Yes	One copy of each document to Archive
G/44	General Notes on Public Warning System – File Empty		
G/45	Siren Tests and How to Deal with Public Enquiries	Yes	One copy of each document to Archive
G/46	Operation of Sirens and Maroons with Station Instructions	Yes	One copy of each document to Archive
G/47	Siren Block Diagrams – File Empty		
G/48	List of Setting up Procedures	Yes	One copy of each document to Archive
G/49	Crash Course for Volunteers	Yes	One copy of each document to Archive
G/50	List of Stores to be issued to Parish Sections	Yes	One copy of each document to Archive
G/51	List of Contents of Emergency Measures Manual	Yes	One copy of each document to Archive
G/52	Stores Control Folder Contents	Yes	One copy of each document to Archive
G/53	List of Food for Use Under Fallout Conditions	Yes	One copy of each document to Archive
	Index to Archives held in the Broadcast Studio		To Archive
G/54	Notes on Local Welfare Arrangements	Yes	One copy of each document to Archive
G/55	Principles of Operating a Rest Centre	Yes	One copy of each document to Archive
G/56	Basic Principles of Communal Shelter Management	Yes	One copy of each document to Archive
G/57	Principles of Good Instruction, Includes film reel – Methods of Instruction	Yes	One copy of each document to Archive
G/58	Notes on the Use of Polythene Sandbags	Yes	One copy of each document to Archive
G/59	Rex Rotary Spirit Duplicator Operation		

	Instructions and Viking Loud Hailer Operation Instructions – File Empty		
G/60	French Liaison	Yes	One copy of each document to Archive
G/61	Notes on Electric Wiring Standby Generator and Air Vent System	Yes	One copy of each document to Archive
G/62	Notes on Sanitation in the Field	Yes	One copy of each document to Archive
G/63	Notes on Catering at Control Centre	Yes	One copy of each document to Archive
F/1	Broadcasting Log	Yes	One copy of each document to Archive
F/2	Coms Fault Details Form	Yes	One copy of each document to Archive
F/3	Coms Test Form	Yes	One copy of each document to Archive
F/4	Confirmation of Urgent Messages	Yes	One copy of each document to Archive
F/5	Dose Register for Individual	Yes	One copy of each document to Archive
F/6	Exercise Debriefing Forms – File Empty		
F/7	Exercise External Liaison	Yes	One copy of each document to Archive
F/8	No Title – File Empty		
F/9	Fallout Readings Record – File Empty		
F/10	D/R 7 Graphs 5 minutes – Old Type	Yes	One copy of each document to Archive
F/10	D/R 7 Graph 5-10 minutes – New Type Green Training Orange Operation	Yes	One copy of each document to Archive
F/11	D/R 7 Graphs 10 minutes – Old Type	Yes	One copy of each document to Archive
F/12	Log of Tape Recordings	Yes	One copy of each document to Archive
F/13	Met Forms	Yes	One copy of each document to Archive
F/14	Monitor Post Stores Issue Form	Yes	One copy of each document to Archive
F/15	Nuke Burst Forms UK/Fr	Yes	One copy of each document to Archive
F/16	Parish and E.S. Sitrep Forms	Yes	One copy of each document to Archive
F/17	Parish and E.S. Stores – Issue Form	Yes	One copy of each document to Archive
F/18	Priority in N.B. Telling	Yes	One copy of each document to Archive
F/19	Personal Particulars Record	Yes	One copy of each document to Archive
F/20	No Title – File Empty		
F/21	Record of Events Form	Yes	One copy of each document to Archive
F/22	Scientific Advisers Check List	Yes	One copy of each document to Archive
F/23	Scientific Advisers Prediction Form (2	Yes	One Copy of each

	boxes)		document to Archive
F/24	Warning and Detection Codes	Yes	One copy of each document to Archive
E/1	Brief of Volunteer Helpers	Yes	One copy of each document to Archive
E/2	Dosimeter and Wallac Reading Exercises	Yes	One copy of each document to Archive
E/3	External Liaison Officers Briefing	Yes	One copy of each document to Archive
E/4	Message Writing Exercises (including sound reel to reel roll)	Yes	One copy of each document to Archive
E/5	Narratives (2 boxes)	Yes	One copy of each document to Archive
E/6	PBX Operation (3 boxes)-Files Empty		
E/7	Notes on P.R.O and Scripting Duties	Yes	One copy of each document to Archive
E/8	Control Section General Quiz	Yes	One copy of each document to Archive
E/9	Quiz-handbook No 10	Yes	One copy of each document to Archive
E/10	Public Enquiries Quiz	Yes	One copy of each document to Archive
E/11	Public Enquiries Quiz-Separate	Yes	One copy of each document to Archive
E/12	Public Enquiries Quiz-Supplement	Yes	One copy of each document to Archive
E/13	Radio Net Exercises	Yes	One copy of each document to Archive
E/14	Siren and Maroon Exercise	Yes	One copy of each document to Archive
E/15	Stores Control Ex	Yes	One copy of each document to Archive
E/16	Exercise Dummy Run-W & D Messages	Yes	One copy of each document to Archive
S/1	Carbon Typing Paper-Blank		To be left on site
S/2	Carbon Typing Paper-Blank		To be left on site
S/3	Graph Paper-Blank		To be left on site
S/4	Lined Memo Paper-Blank		To be left on site
S/5	Misc Stationery-Blank		To be left on site
S/6	Pamphlets (2 boxes)	Yes	One copy of each document to Archive
PSNB	Public Enq Quiz (3 boxes)	Yes	One copy of each document to Archive
Unmarked Box	Various Publications re Nuclear Conflict	No	To be left on site
Tech Library	Various Publications re Nuclear Conflict	No	To be left on site
Unmarked box	Various papers re exercises	Yes	One copy of each document to Archive
Large	Copies of Draft Broadcasting Scripts,	Yes	One copy of each

Box	Part 1, 1-12 and Part 2, 13-19		document to Archive
Large Box	Transcripts of video tapes No 1-20 "on advice to public on protection against nuclear attack" Part 3	Yes	One copy of each document to Archive
Large Box	Situation Reports	Yes	One copy of each document to Archive
Large Box	Small File-Operation of Mode 1-Control Centre to CTV Studio	No	Copies to Archive
Unlabelled Box 1	Various papers and pamphlets including the Perry's Guide, Acts of States, Phonetic Alphabet	No	Weeding Needed
Unlabelled Box 2	Empty Record Book, various folders and control centre papers, London Calling magazines	Yes	Weeding Needed
Filing Cabinet	Indices of LPs	No	To be left on site
Files on filing cabinet	PBX Exercises 2, 3 & 5, Best of Radioplay, BBC Jersey Drawings	No	Copies to Archive

Records held in the Broadcast Control Room

Ref	File Title	Duplicates	Recommendations
	File of BBC Records (x2)	Yes	One copy of each document to Archive
	PRO Scripting Documents	No	Copies to Archive
	PRO overall plan	Yes	One copy of each document to Archive
	BBC Communication folder and handwritten scripts	Yes	One copy of each document to Archive
	PBX Exercise Log Book 6	No	Copies to Archive
	Sound reel to reel rolls and tape cassettes	No	Listen at the Archive and decide

Store Room

Shelves	Ops Duties Manual	Yes	One copy of each document to Archive
	Emergency Broadcasting Manual	Yes	One copy of each document to Archive
	Parish Warden Section War Book-Training Copy	No	Copies to Archive
	Parish Emergency War Book	Yes	One copy of each document to Archive
	La Moye Monitor Post Log	Yes	One copy of each document to Archive
	Various stationery and forms	Yes	One copy of each document to Archive
	States of Jersey-Civil Defence in Jersey leaflets (whole bay of duplicates)	Yes	One copy of each document to Archive

Cabinet	Training Aids-11 cans of 16mm film- Public Information films	No	Watch at Archive and decide
	Parish Warden Section War Book	Yes	One copy of each document to Archive
	Rolled papers-graph paper etc.	Yes	To be left on site

Additional material on top shelf – unable to reach to assess.

Main Room

On Walls	NRPB Information Leaflets re the effects of radiation	No	To be left on site
	Ex-Directory Telephone Numbers	No	To be left on site
	Fall out predictions	No	Copies of previous predictions to Archive – if exist
	Various Maps and Print Outs	No	To be left on site
French Liaison Desk	French Radio Link	Yes	One copy of each document to Archive
	Civil Emergency Control Centre- French log	Yes	One copy of each document to Archive

Outer Office

On Wall	Plans of Le Rocquier School	No	Copies to Archive
---------	-----------------------------	----	-------------------

Appendix 3: Plan of Plant Room (14) dated 1963

