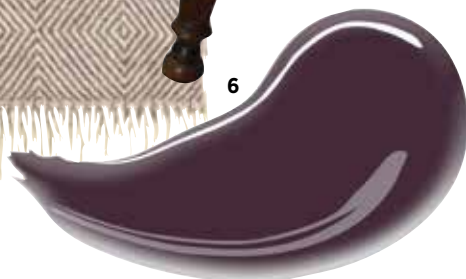


# Style notes

Combine rich hues with classic pieces to emulate Catherine Hills' style



**1 PHRENOLOGY HEAD** Add an ornamental touch to a table or sideboard, and learn the contours of the skull that it was believed indicated character and personality traits in the early 19th century, with a large Phrenology head, £50 from John Lewis.  
**2 LIGHT** Imitate Victorian interiors with the

Bloomsbury polished brass wall light from Richard Hathaway Lighting, available with a choice of glass shades, H29xW9cm, £150.64.  
**3 HIDE** A reindeer hide draped over a favourite armchair will make a warm and inviting spot to sit, or use it as a wall decoration or rug, From £150 for W70-80xL110-

130cm from The Fabulous Fleece Company.  
**4 FIREPLACE** Make a grand focal point in the living room with this late-19th-century-style carved Victorian Corbel marble fireplace from Chesney's, H115.5xW144cm, £1,314.  
**5 CHAIR** This Georgian child's chair, H80xW40x D35cm, is a nostalgic addition for a living area

or children's room. £488, handmade by Batheaston.  
**6 PAINT** Take a cue from Catherine and add a rich, dark aubergine colour to the walls for dramatic effect. This Tiffany matt wall paint costs £41.63 for 5ltrs from Lakeland Paints.  
**7 THROW** Add calming, neutral shades to a bedroom and layer the bed for colder nights

with this soft grey and cream diamond design pure new wool throw, W130xL180cm, £49.95 at Not on the High Street.  
**8 MIRROR** Bring the feeling of more light and space into a living room with this traditional gold gilt mirror from Ayers & Graces. H95xW70cm, it's perfect for above the mantelpiece, £139. ❖