

South Gloucestershire

Drainage Challenge fund bid: Carriageway Condition Assessment

Methodology

SCANNER, CVI and SCRIM data has been extracted from the PMS for the 9 identified locations, and linked by chainage.

A Carriageway Condition Indices (CCI) has been calculated for each subsection using the methodology set out in UKPMS Technical Note 46. In addition, the SCRIM profile for those sites with valid (2015/2016) SCRIM data has been derived.

This has been reported against the bandings from the HMEP Lifecycle Planning Toolkit (HMEP 2012) by hierarchy.

Table A1: CCI Condition Bands by Road Hierarchy

Description	Code	CCI Condition Bands			
		Strategic Route & Main Distributors	Secondary Roads	Link Roads	Local Access Roads
Carriageway in Very Good condition	VG	0 – 3.0	0 – 4.0	0 – 6.0	0 – 7.0
Carriageway in Good condition	G	3.1 - 10	4.1 – 13.0	6.1 – 17.0	7.1 – 18.0
Carriageway in Fair condition	F	10.1 – 25.0	13.1 – 30.0	17.1 – 35.0	18.1 – 38.0
Carriageway in Poor condition	P	25.1 – 61.0	30.1 – 65.0	35.1 – 72.0	38.1 – 76.0
Carriageway in Very Poor condition	VP	61.1 - 100	65.1 – 100.0	72.1 – 100.0	76.1 – 100.0

This establishes the current condition of the network in each location.

Deterioration Modelling

For each site a deterioration model has been applied, and the CCI recalculated after 10 years' deterioration. This assumes no maintenance interventions during this time and is a forecast of the condition in 2027. For SCANNER the deterioration model applies an annual change to the parameters used to calculate CCI (rut/ 3m and 10m profile/ cracking and texture). For SCRIM an annual decrease in the SCRIM coefficient is applied and a revised SCRIM profile calculated. The annual deterioration rates applied are shown in table 1.

Parameter	Deterioration Per Year
Rut Depth	0.3
3m Profile Variance	0.2
10m Profile Variance	1
WC Cracking %	0.03
Texture Depth	-0.035
SCRIM Deficiency	-0.006

Table 1: Deterioration rates

For the CVI data available on Beckspool Road the CCI has been calculated using the TN46 methodology. Deterioration has been applied on a linear basis where it has been assumed that a road deteriorates from 'good' as defined by the CCI to very poor over 25 years. There are a limited number of defects present from the CVI survey so the overall effect is to indicate deterioration from 'good' to 'fair' over 10 years.

Impact of deterioration

The deterioration model assumes no interventions. As the condition deteriorates there is likely to be an increase in the number of safety and routine maintenance interventions required, and any planned structural scheme is likely to require a more expensive intervention.

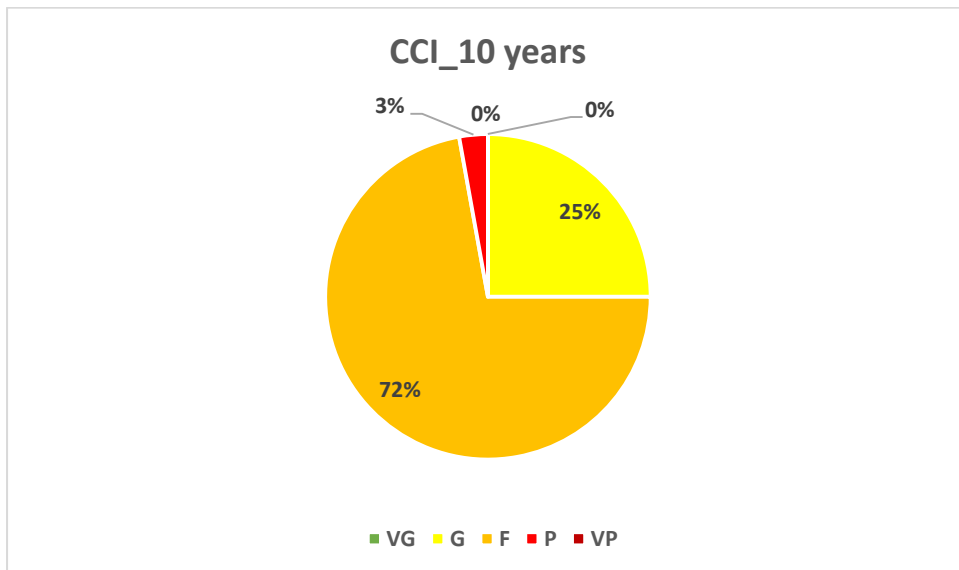
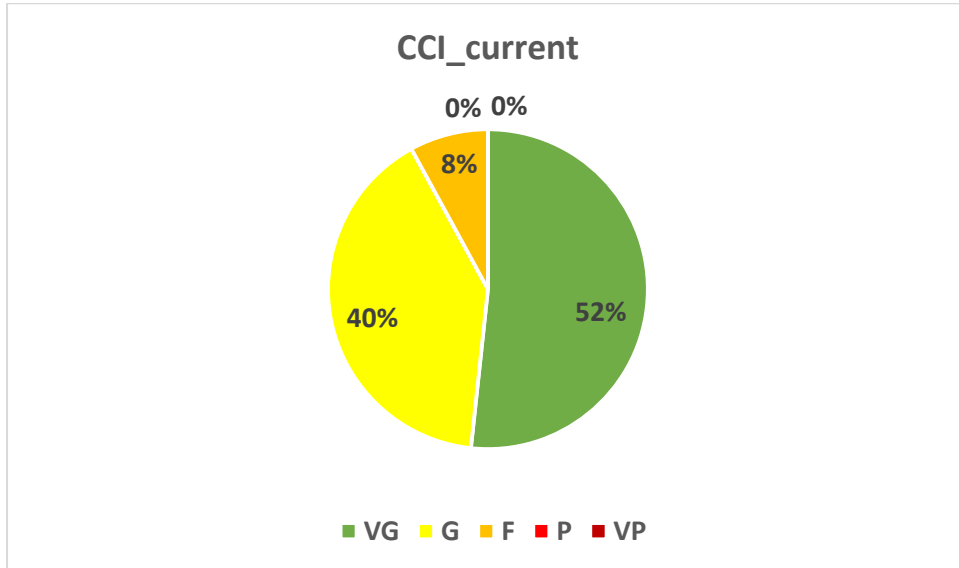
The SCRIM profile would indicate the safety risk on the roads will increase, and this will require management through an investigatory protocol and targeted treatments.

A420 Wick: High Street Wick

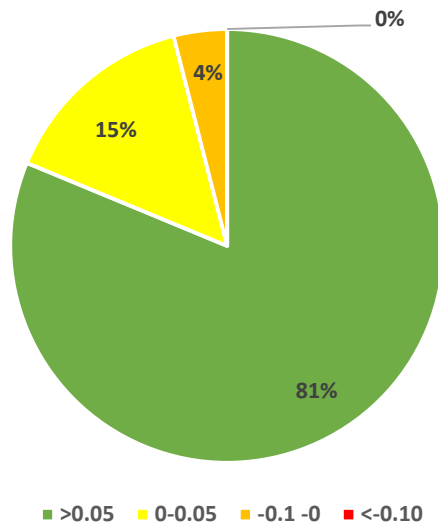
SCANNER survey: July/ August 2016

SCRIM survey August 2016

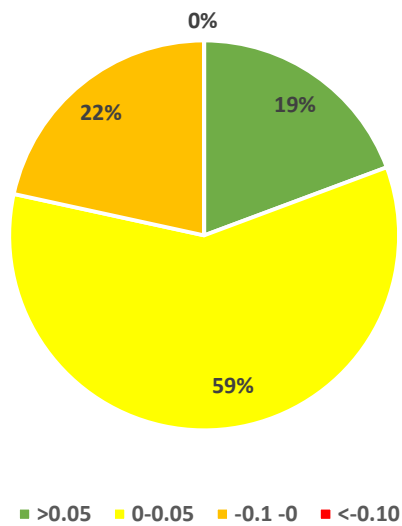
Condition categories for Strategic/ Main distributor (ref HMEP Lifecycle Planning toolkit: Table A1. November 2012)



SCRIM_Current



SCRIM_10 Years

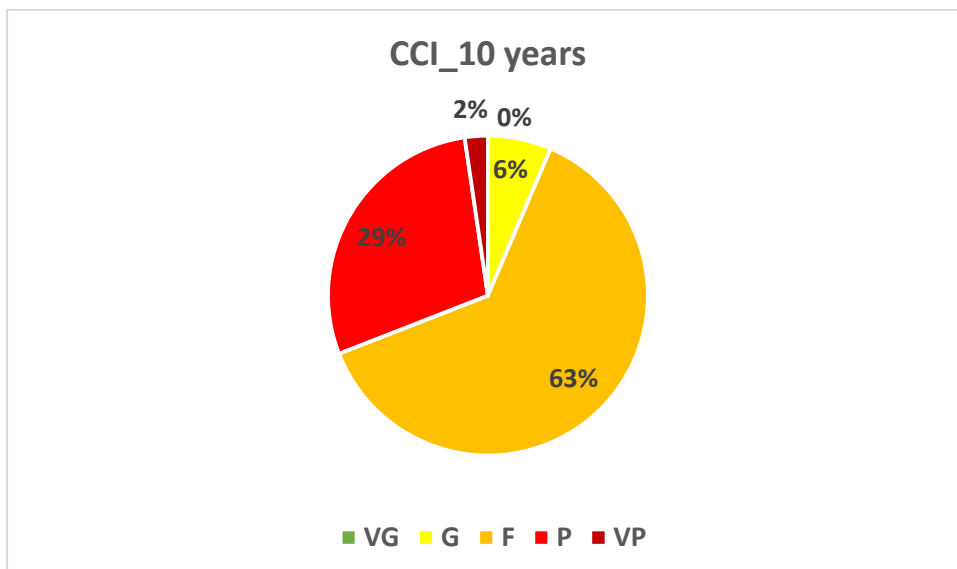
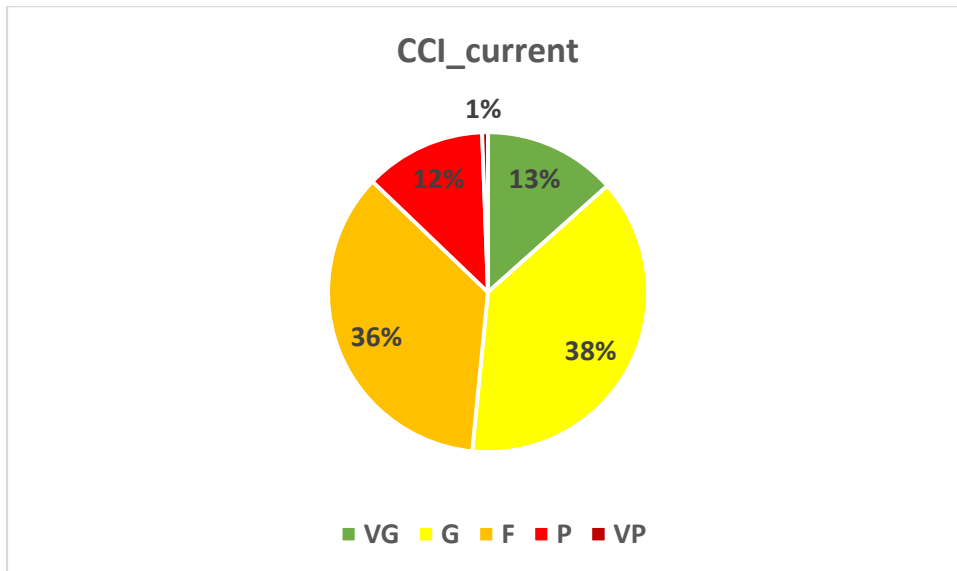


A431 Swineford: Bath Road

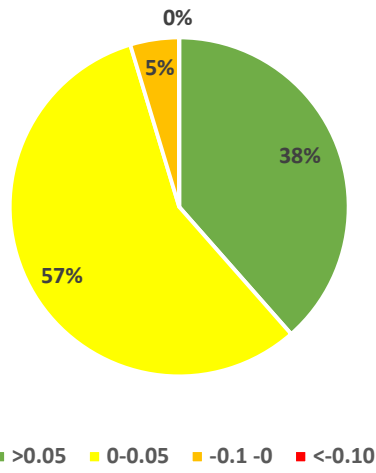
SCANNER survey: July 2016

SCRIM survey August 2016

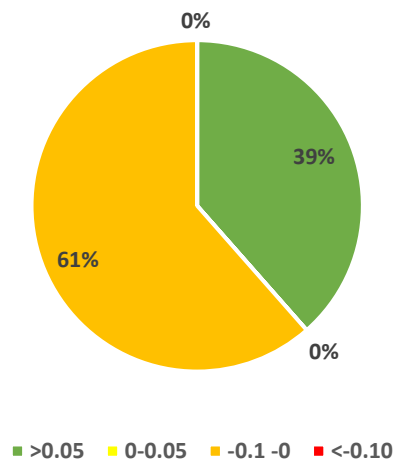
Condition categories for Strategic/ Main distributor (ref HMEP Lifecycle Planning toolkit: Table A1. November 2012)



SCRIM_Current



SCRIM_10 years

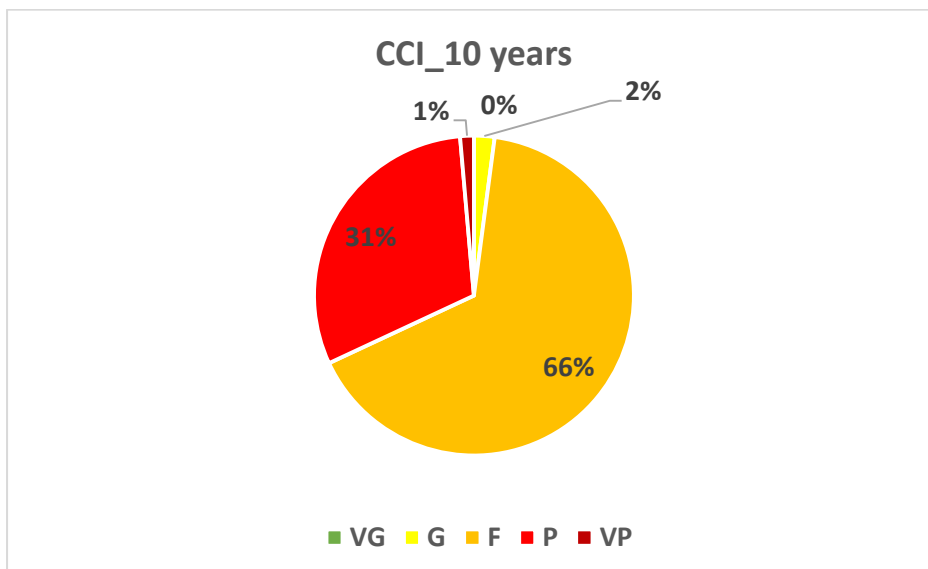
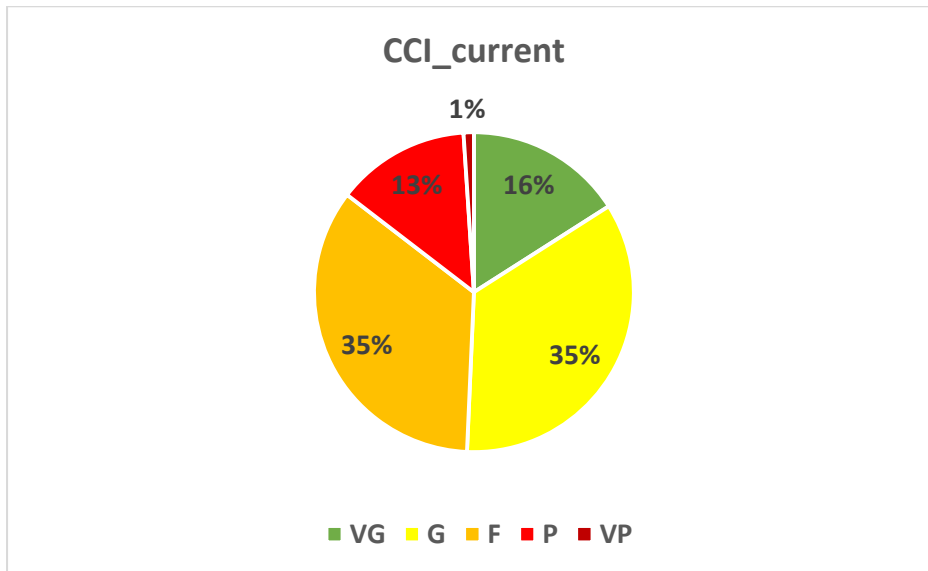


A4175 Oldland Common: Cherry Gardens

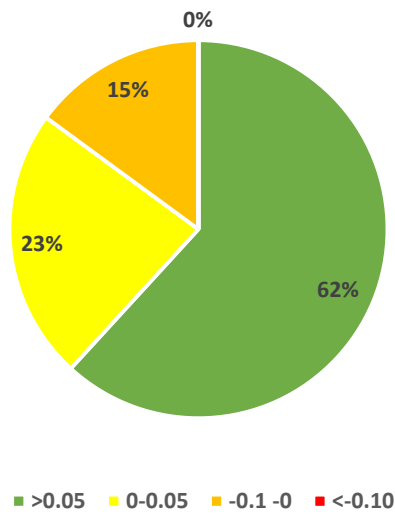
SCANNER survey: July 2016

SCRIM survey August 2016

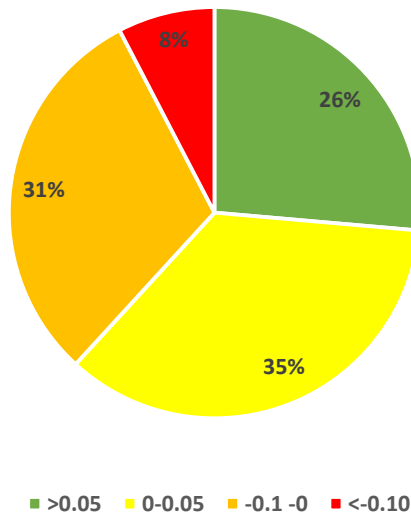
Condition categories for Strategic/ Main distributor (ref HMEP Lifecycle Planning toolkit: Table A1. November 2012)



SCRIM_Current



SCRIM_10 Years

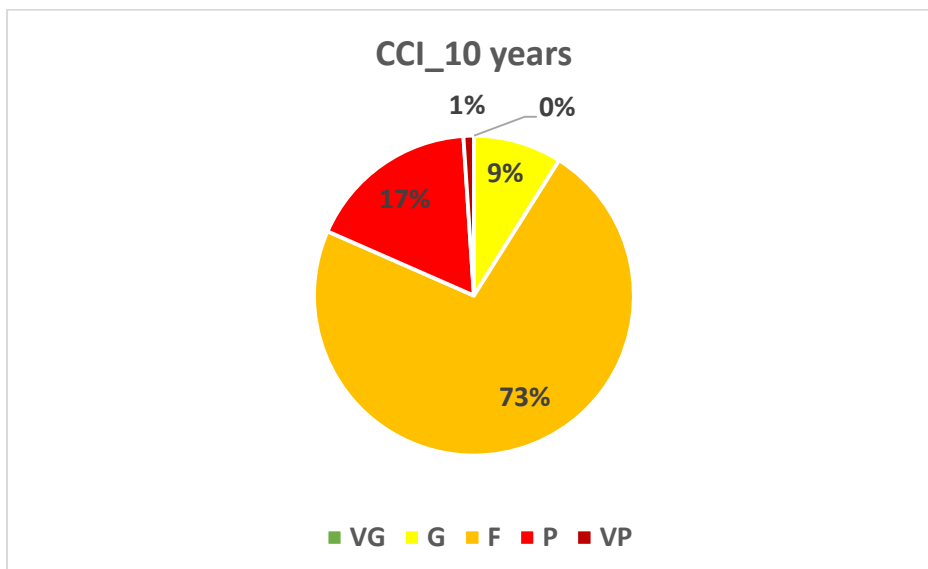
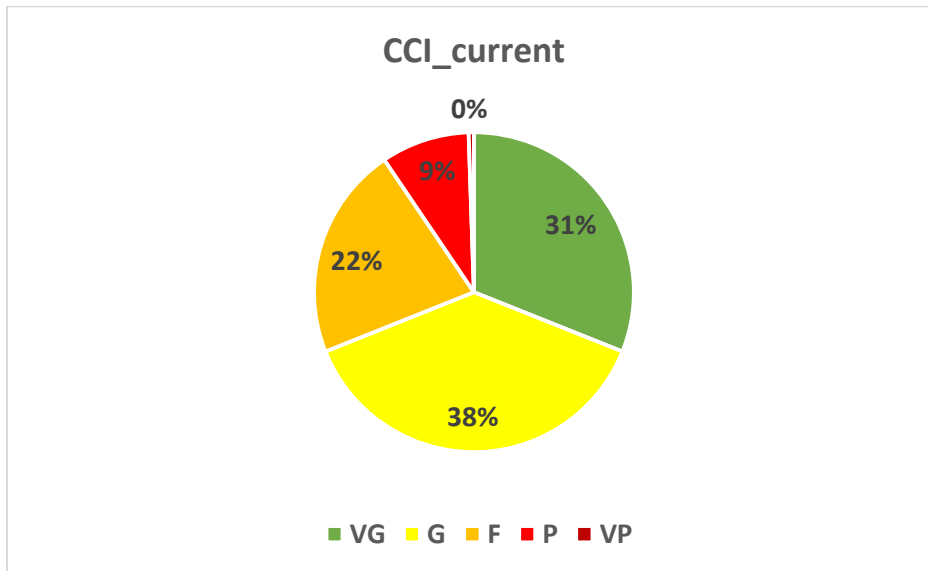


B4058 Winterbourne: High Street

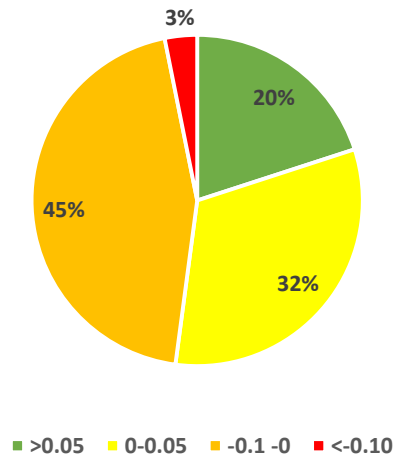
SCANNER survey: May 2015/ August 2016

SCRIM survey August 2016

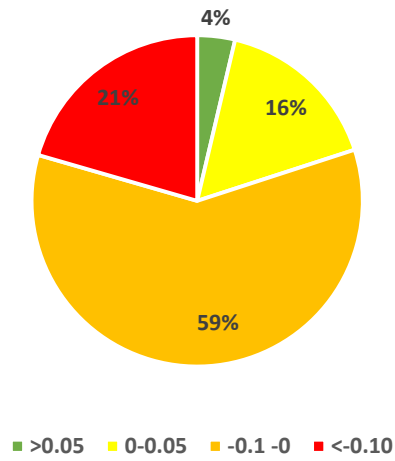
Condition categories for Strategic/ Main distributor (ref HMEP Lifecycle Planning toolkit: Table A1. November 2012)



SCRIM_Current



SCRIM_10 Years

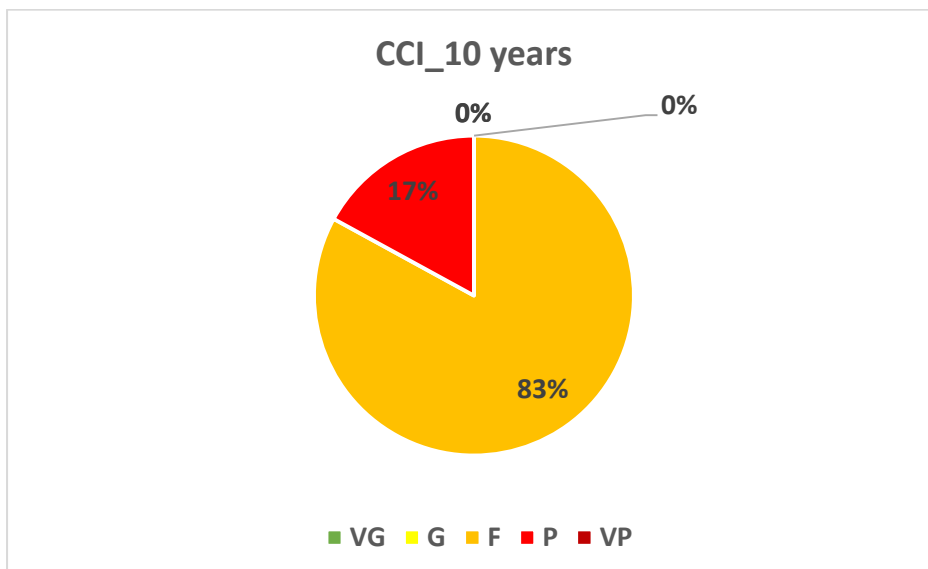
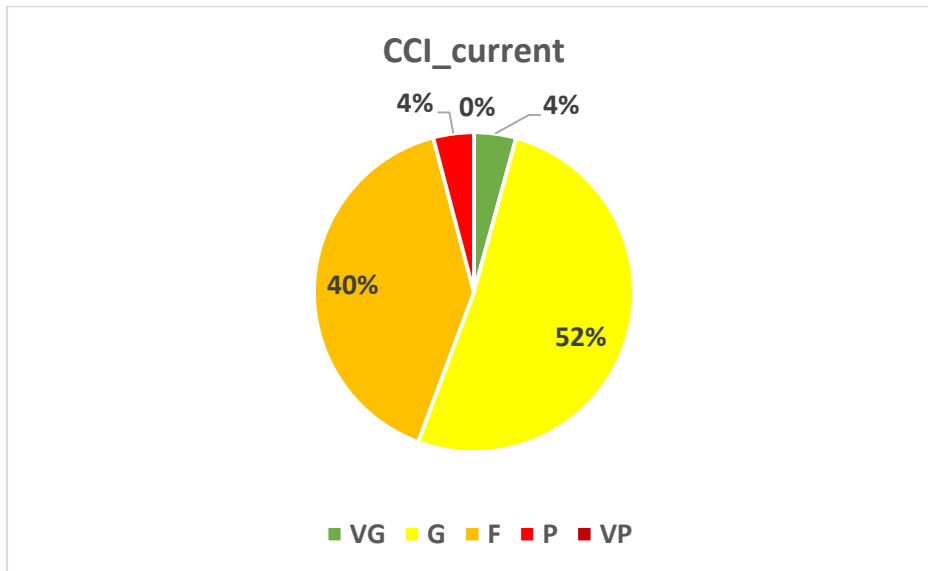


B4058 Bagstone: Bagstone Road

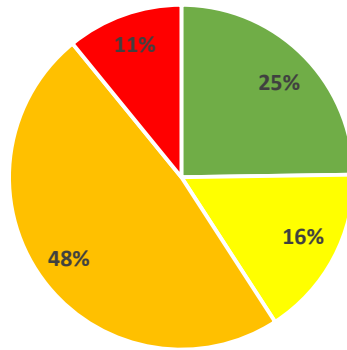
SCANNER survey: May 2015/ August 2016

SCRIM survey August 2016

Condition categories for Strategic/ Main distributor (ref HMEP Lifecycle Planning toolkit: Table A1. November 2012)

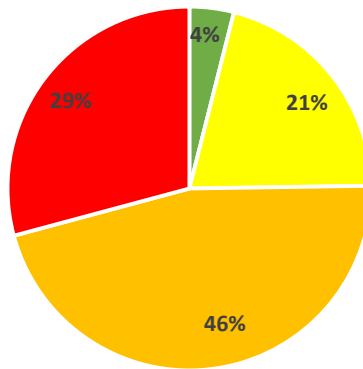


SCRIM Current



■ >0.05 ■ 0-0.05 ■ -0.1-0 ■ <-0.10

SCRIM_10 Years



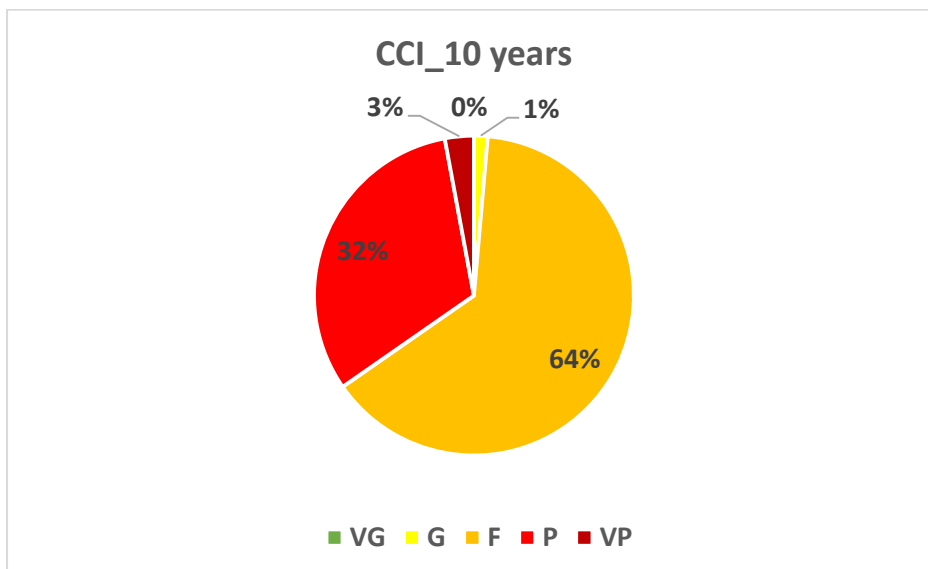
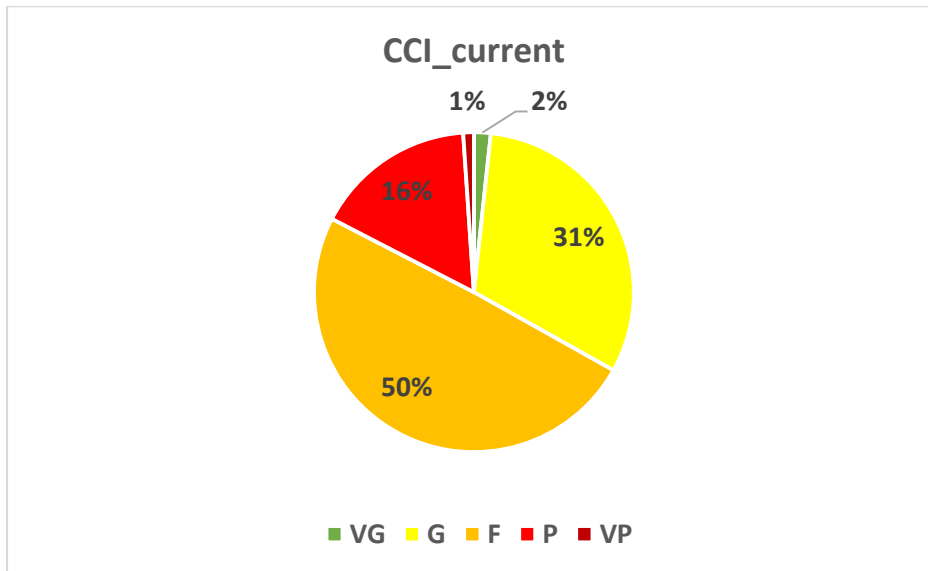
■ >0.05 ■ 0-0.05 ■ -0.1-0 ■ <-0.10

C317 Abson Road

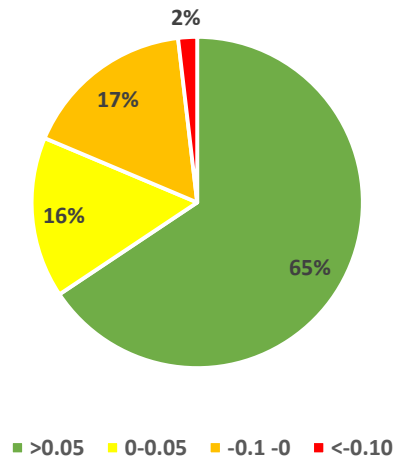
SCANNER survey: May 2015/ August 2016

SCRIM survey August 2015

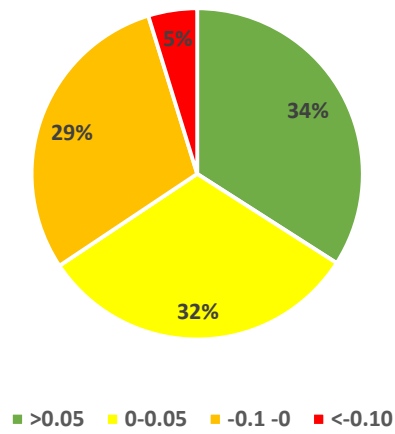
Condition categories for Secondary Roads (ref HMEP Lifecycle Planning toolkit: Table A1. November 2012)



SCRIM_Current



SCRIM_10 Years

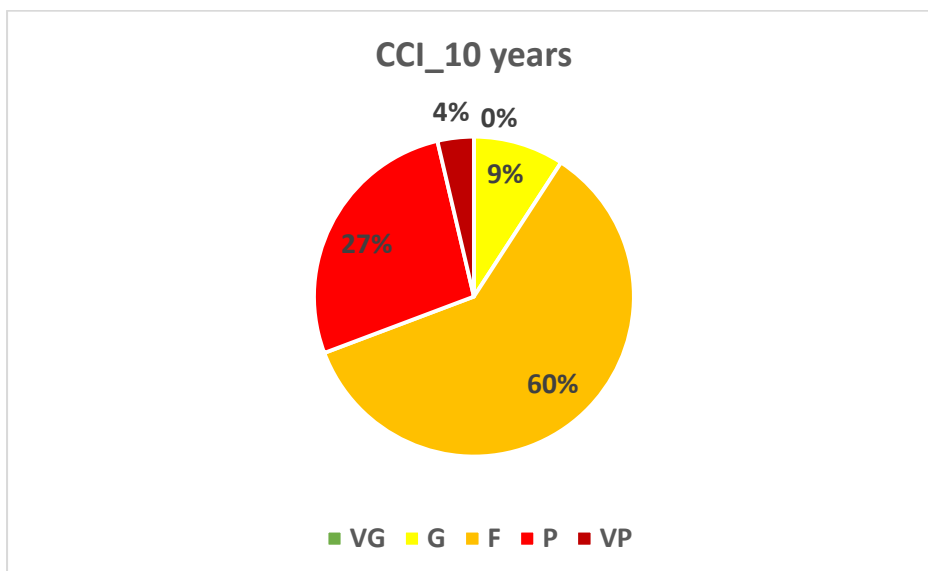
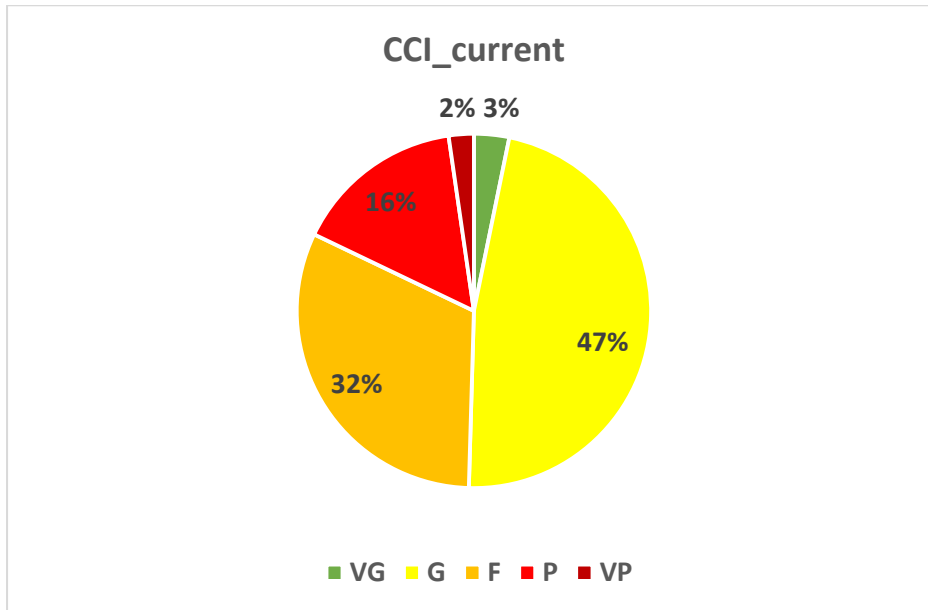


C231 Oldbury Village

SCANNER survey: May 2015/ July 2016

SCRIM survey: none

Condition categories for Secondary Roads (ref HMEP Lifecycle Planning toolkit: Table A1. November 2012)

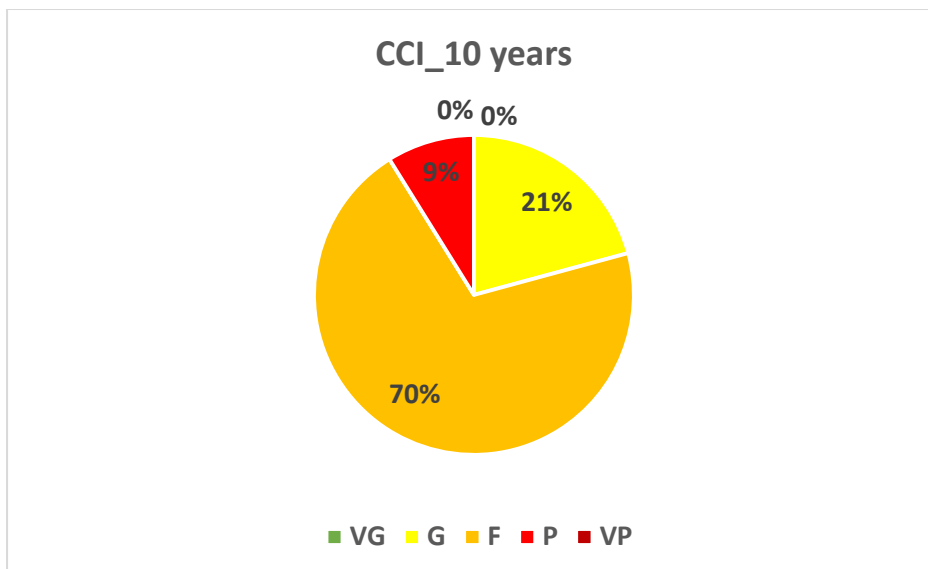
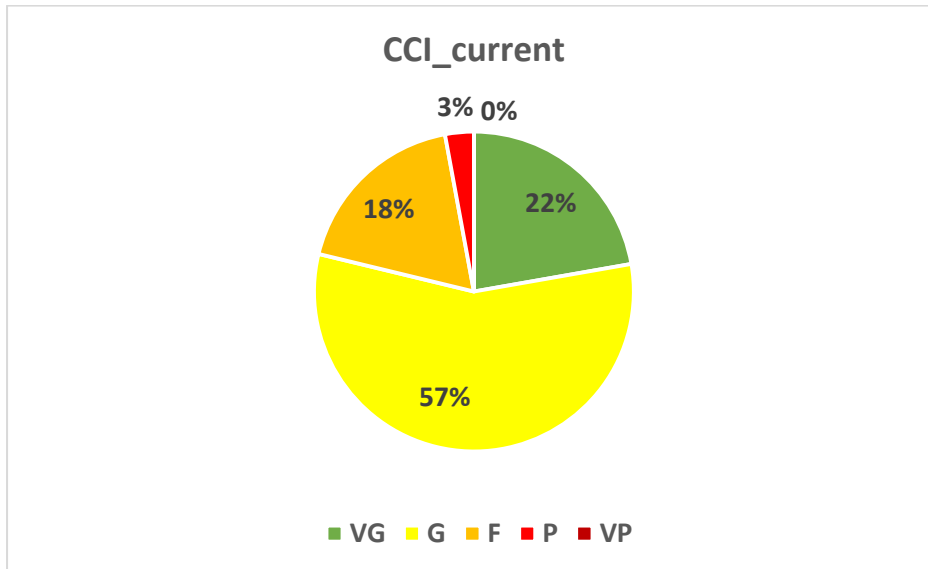


C232 Oldbury Lane

SCANNER survey: May 2015/ July 2016

SCRIM survey: August 2016

Condition categories for Link Road (ref HMEP Lifecycle Planning toolkit: Table A1. November 2012)



C232 Beckspool Road, Frenchay

CVI survey:

Condition categories for Local Access Road (ref HMEP Lifecycle Planning toolkit: Table A1. November 2012)

