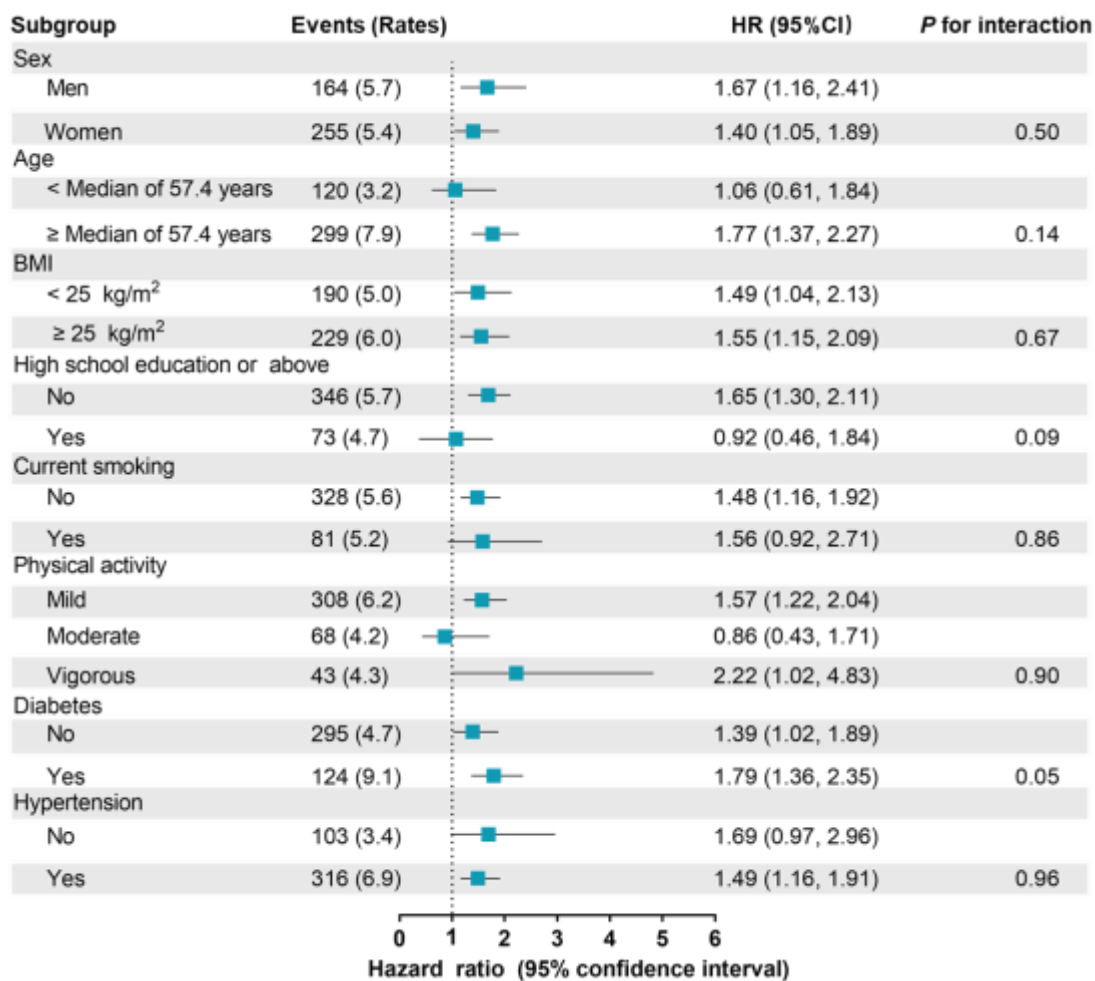


**Supplemental Figure 2. Hazard ratios and 95% confidence intervals of cardiovascular diseases (A) and stroke (B) according to subgroups, comparing the prolonged QTc interval group with the normal QTc interval group.** Hazard ratios (HR) and 95% confidence intervals (CI) were obtained from multiple Cox regression models, after adjustments for sex, age, BMI, education, current smoking, physical activity, diabetes, hypertension, serum total cholesterol, triglycerides, HDL cholesterol and LDL cholesterol; prolonged QTc interval: QTc interval  $\geq$  450 ms in men or QTc interval  $\geq$  460 ms in women; BMI: body mass index; HDL cholesterol: high density lipoprotein cholesterol; LDL cholesterol: low density lipoprotein cholesterol.

**A**



**B**

