





# Inholm Area Plan



- Future phases
- Homes for sale
- Town House
- Sales pavilion
- Busway

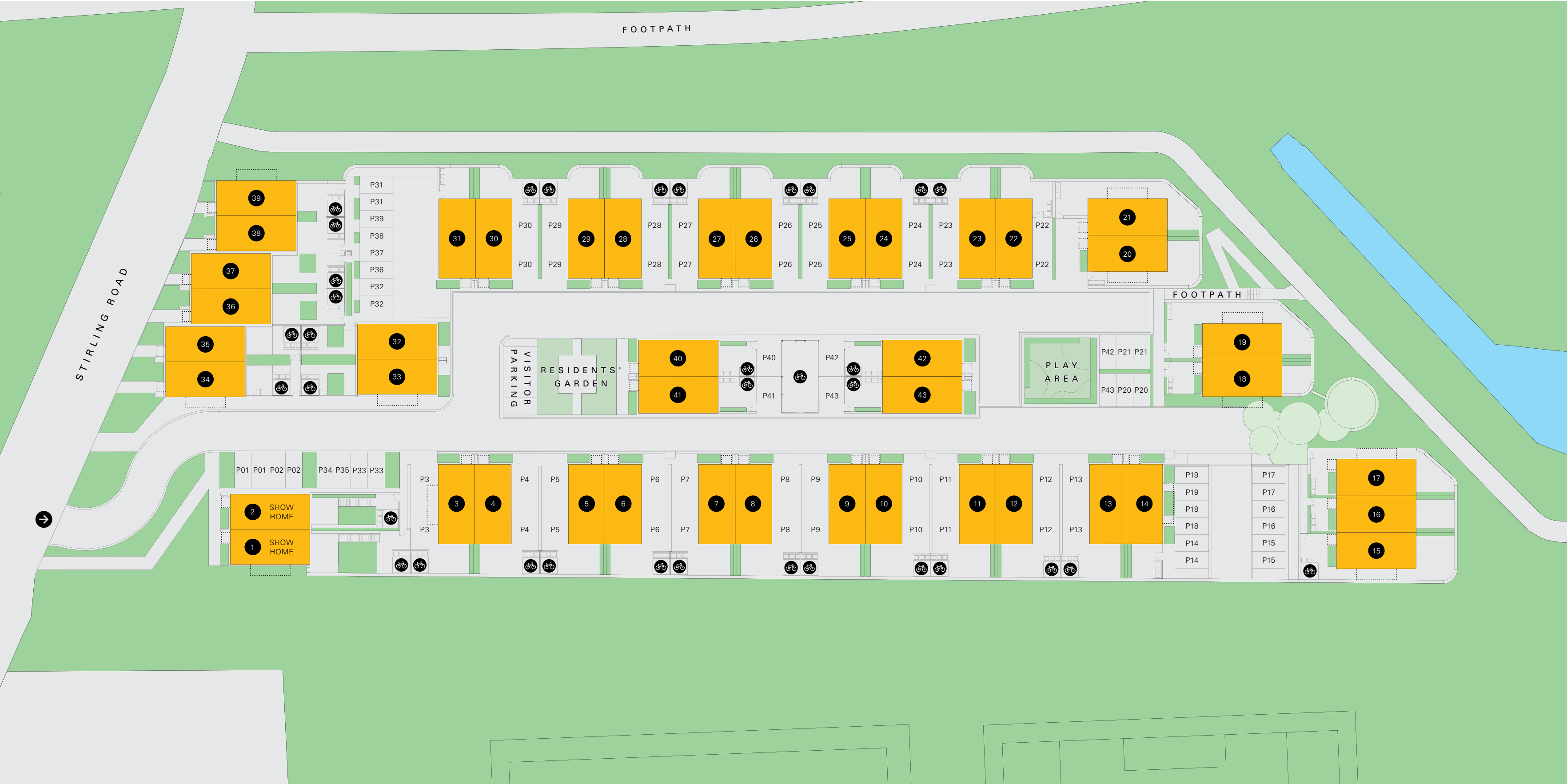


# Inholm

## The Peninsula



- Town House
- Bike storage
- Entrance
- Balcony

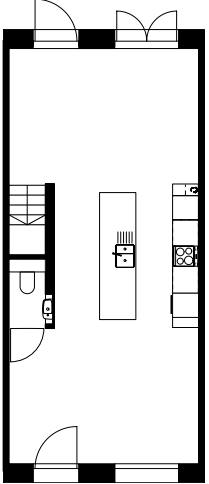
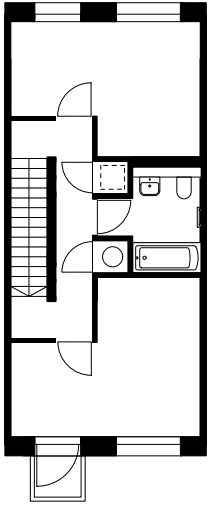
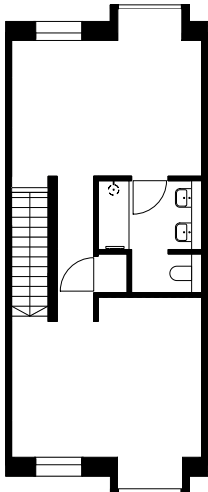


# Town House

## Garden living

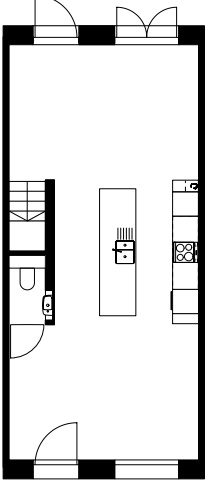
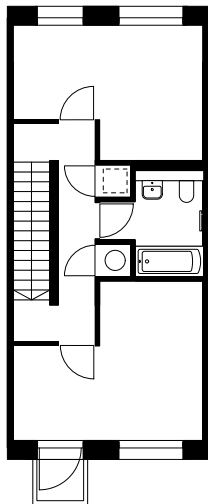
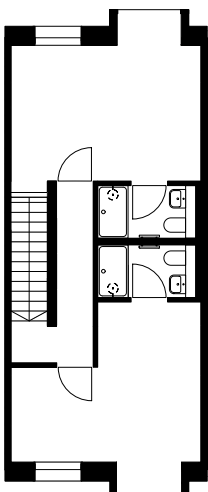
Layout 1 —  
 Plots 3,5,6,8,9,10,  
 13,14,15,18,19,25,  
 26,29,30,31,33,36,  
 40,42

3 rooms including  
 master suite  
 2 bathrooms

G2
 
 M1
 
 U8
 

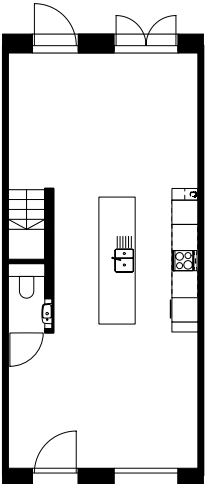
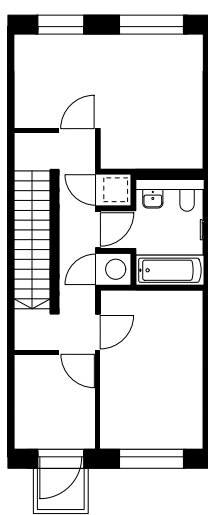
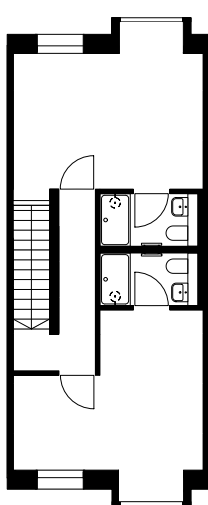
Layout 2 —  
 Plots 2,4,7,11,12,  
 16,23,27,32,35,37,  
 38,41,43

4 rooms  
 3 bathrooms

G2
 
 M1
 
 U9
 

Layout 3 —  
 Plot 21

5 rooms  
 3 bathrooms

G2
 
 M2
 
 U9
 

[\\* Show home](#)

**Garden living**  
 In this configuration you wake up, go downstairs for breakfast and gaze out into the garden as the kettle boils. In the summer, you can invite friends around, throw open the patio doors and show off your barbecue skills. Your bedroom will be on the top floor, with high ceilings and large windows, all adding to the feeling that you’re sleeping in the clouds.





# Town House

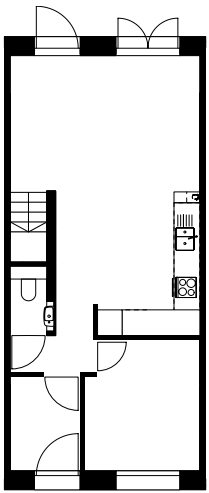
## Garden living

- Each Town House features:
- 139 sq m
  - Private garden terrace
  - Residents' garden
  - Balcony
  - Car parking
  - On the Peninsula

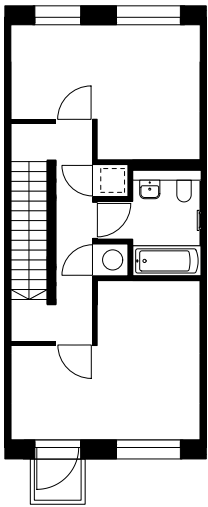
Layout 4 —  
Plots 20,22,34,39

4 rooms including  
master suite  
2 bathrooms

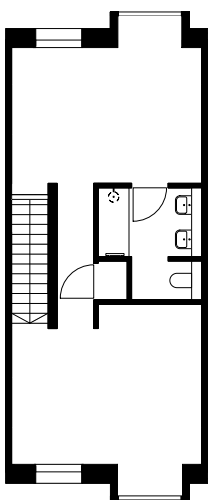
G3



M1



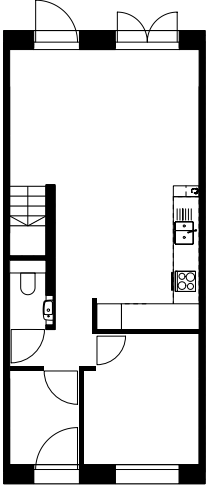
U8



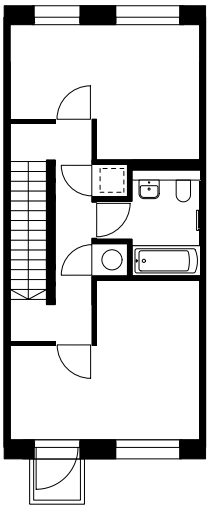
Layout 5 —  
Plot 28

5 rooms  
3 bathrooms

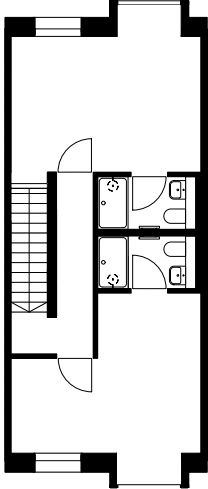
G3



M1



U9

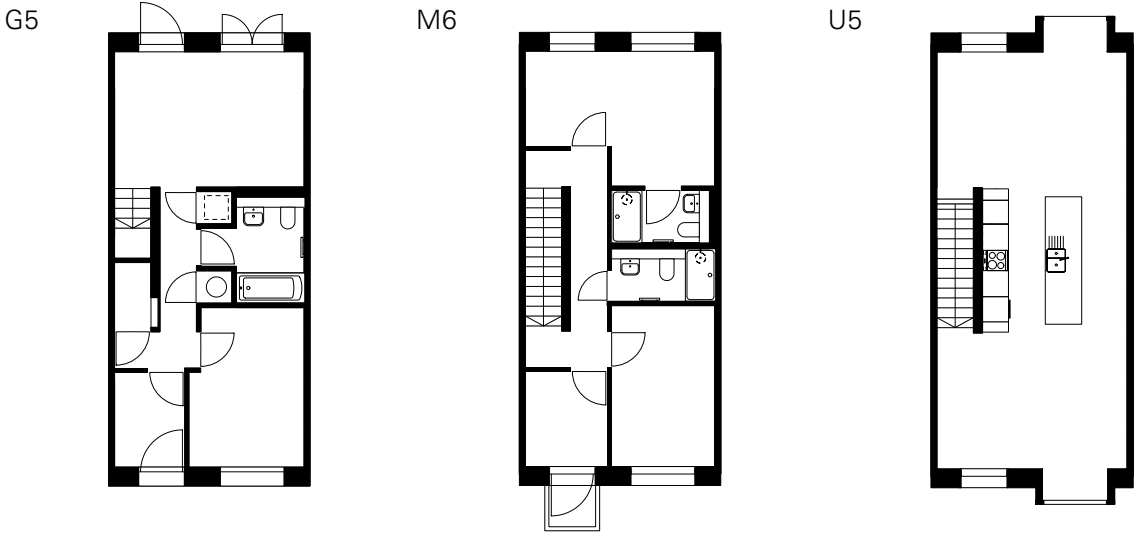


# Town House

## Loft living

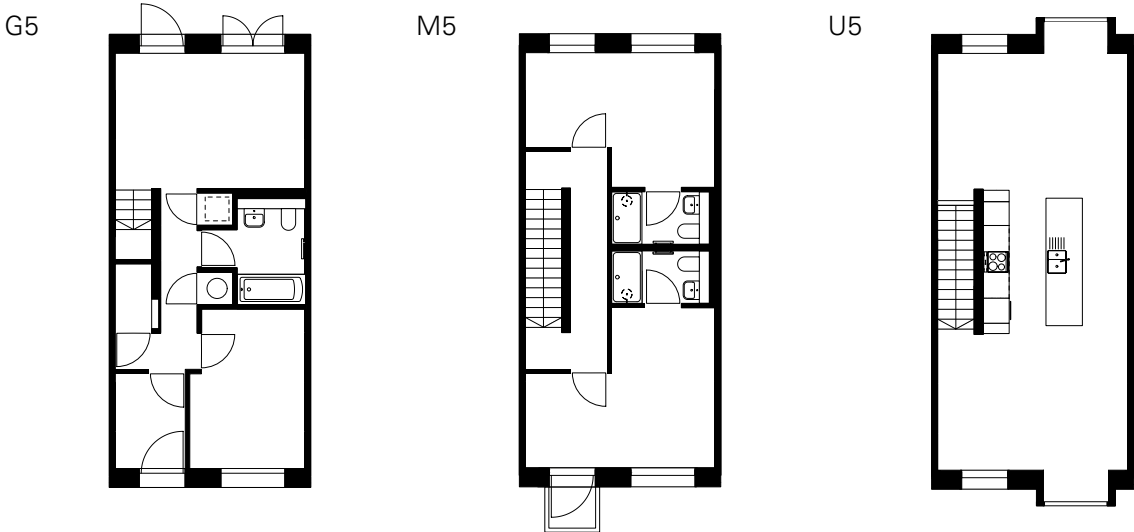
Layout 1 —  
Plots 1, 24

5 rooms  
3 bathrooms



Layout 2 —  
Plot 17

4 rooms  
3 bathrooms



[\\* Show home](#)

**Loft living**  
This configuration provides a kind of modern loft living and it's great, not just for the discerning dinner host, but for family life. You get lots of extra light and space on the top floor, which quite literally brightens your day (subject to UK weather). So, if you like to feel like you're in a posh restaurant with stunning views as you tuck into your fish fingers, this is the choice for you.





# Town House Specification

Why should you ever have to pay for upgrades when you buy a new home?

All House by Urban Splash homes come with high specification sanitary ware and appliances as standard, it’s just what we do. Our belief in delivering the highest possible quality homes covers every aspect of the build, right down to taps, tiles and toilets.



## Bathroom

- White ceramic Vitra sanitaryware
- Vado shower (over-bath)
- Chrome taps and fittings
- Heated towel rail
- Mirror and storage cupboards
- Ceramic floor tiles  
Waxman Vienna Black, 300x600mm
- Full height ceramic bath tiles  
Waxman Vienna Black, 300x600mm and ceramic Waxman White mosaic tile 50x50mm

## Kitchen

- Fully integrated units
- Induction hob and slimline extractor
- Integrated fridge and freezer (Beko/Indesit or similar)
- Integrated Zanussi oven
- Integrated dishwasher (Beko/Indesit or similar)
- Worktop 20mm composite stone (Silestone, Quartz stone or similar)
- Glass splash back
- Chrome monobloc kitchen tap with stainless steel sink



## Windows and external doors

- Kawneer AA720 thermally broken aluminium windows and doors

## Lighting

- LED/low energy lighting throughout

## Heating and hot water

- Electric panel heating
- Air source water cylinder 270L capacity
- Heating is wifi operable and air source water cylinder is operated locally

## Wall finishes

- Painted MDF panelling to internal partitions
- Painted dry lining to ceiling

## Media

- Broadband connection facilities and satellite points

## Other

- Dedicated space for washing machine with plumbing



## External walls

- US modular insulated timber frame overclad with cladding and 0.15 U Value

## External

- Parking and garden (plot specific)

## Roof

- US modular insulated timber frame finished with single ply membrane (estimated U Value 0.1)

## Warranty

- Checkmate 10 year new home warranty







For more information please visit  
the sales pavilion, call or email.

Stirling Road  
Northstowe  
Cambridge  
CB24 1DJ

01223 867000  
inholm@housebyurbansplash.co.uk  
housebyurbansplash.co.uk/inholm

↓ Follow us

@housebyurbansplash  
@housebyus

↓ Credits

Smiling Wolf  
shedkm  
Uniform  
Joel Fildes

↓ Disclaimer

Whilst these particulars are believed to be correct, their accuracy can not be guaranteed and there may be some variation to them. Purchasers and tenants are given notice that: 1) These particulars do not constitute any part of an offer or contract. 2) All statements made in these particulars are made without responsibility on the part of the agents or the developer. 3) None of the statements contained in these particulars are to be relied upon as statement or representation of fact. 4) Any intended purchaser or tenant must satisfy him/herself by inspection or otherwise as to the correctness of each of the statements contained in these particulars. 5) The developer does not make or give, nor any person in their employment has any authority to make or give any representation or warranty whatever in relation to Inholm, Northstowe, or any part of it. 6) The selling agents do not make or give, nor any person in their employment has any authority to make or give any representation or warranty whatever in relation to Inholm, Northstowe, or any part of it. 7) Date of publication September 2021.

Printed on FSC certified wood-free paper  
which is elemental chlorine and acid free.  
It's biodegradable and recyclable.

