

Park Hill — Phase 2 Apartments



1

Streets in the sky

Conceived in the 50's by Ivor Smith and Jack Lynn, these dual aspect apartments were modelled to curve around the hillside, cleverly maximising natural light.

2

A brutalist giant

Park Hill was Grade II listed in 1998 in recognition of its architectural and social significance. Live in the largest listed building in all of Europe.

3

Design led homes

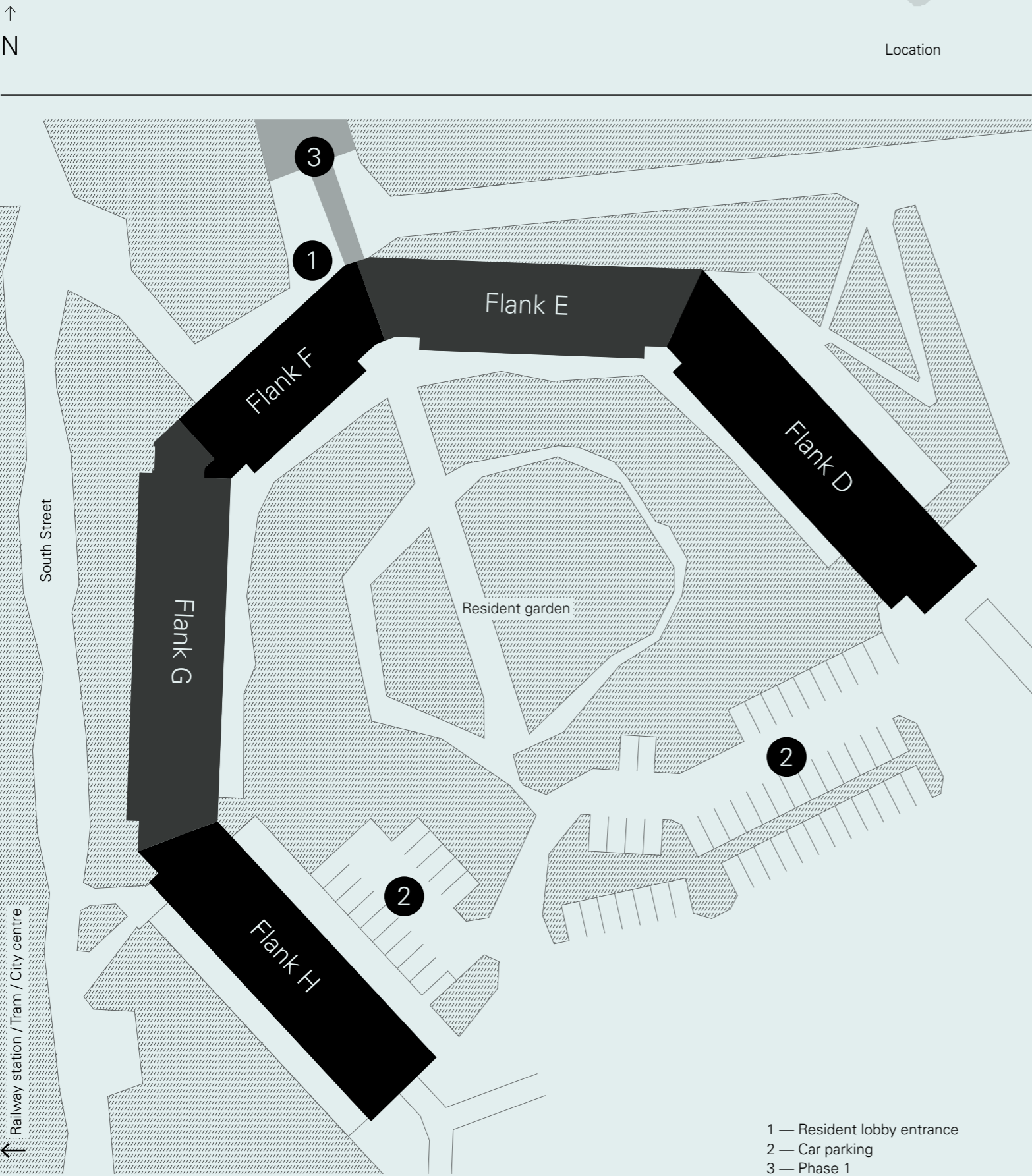
Urban Splash and Places for People are working with Stirling Prize winning architects, Mikhail Riches, to add 195 new apartments to this thriving community.

4

A new view

These will be very special new homes. Every apartment maximises space and light, and will be dual aspect with stunning views and outdoor space.

Site plan



Park Hill — 1 bedrooms

1 bedroom apartments types

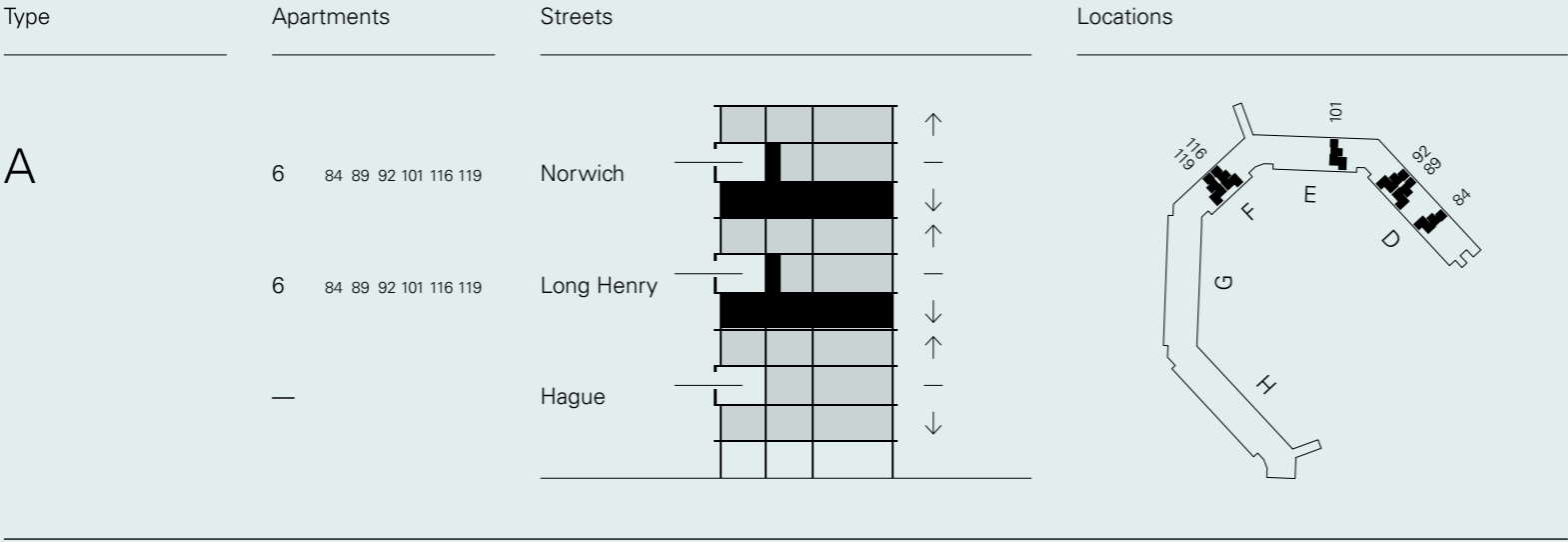
Types	Flanks	Streets		
		Hague	Long Henry	Norwich
A	D/E/F	—	6	6
B	D/E/F	—	5	5
H2	E/G/H	—	5	5
M1A	D/E	—	2	2
M2	G/H	—	2	2
M2+	F	—	1	1
O	E/F	—	3	3
P	F	1	1	1



Park Hill streets

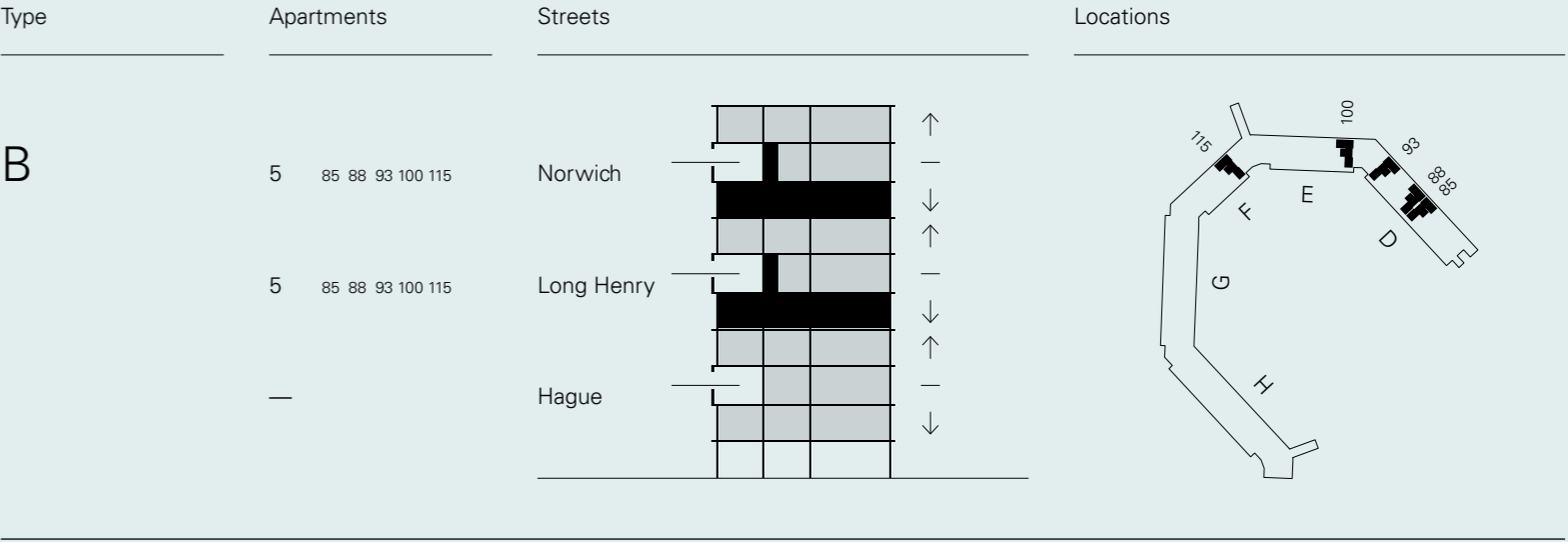
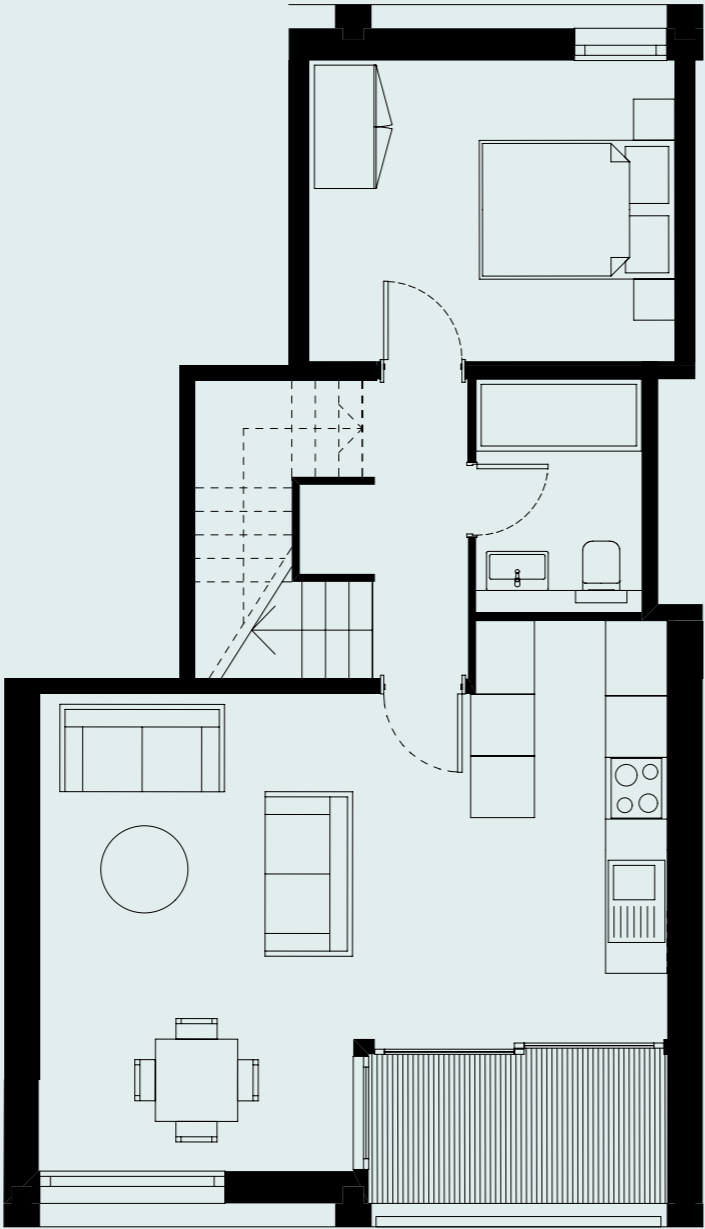
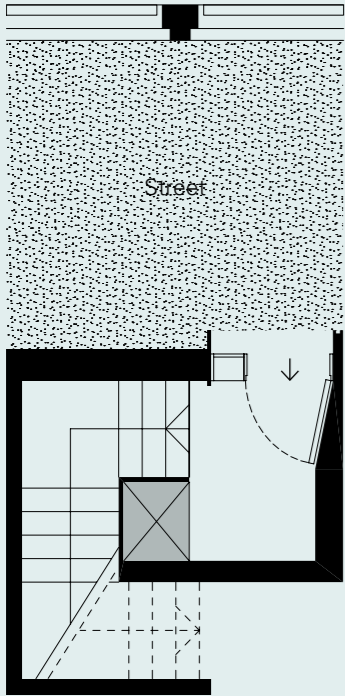
Specification

General
All apartments dual aspect (windows front and back) All apartments duplex (two storeys)
Kitchen
White modern kitchen cupboards and base units Ceramic hob Integrated fan assisted oven Integrated fridge with freezer compartment Stainless steel monobloc taps with stainless steel sink Plumbing for dishwasher Plumbing and space for washing machine
Finishes, fixtures and fittings
Engineered timber flooring to living, dining room and kitchen areas Carpets to bedrooms Black vinyl flooring to bathrooms Engineered timber flooring to stairs and all other areas Metal balustrades to stairs Exposed original concrete feature walls to staircases, living rooms and some bedrooms Floor to ceiling double-glazing Powder coated aluminium framed, glazed internal balustrades to bedrooms
Bathrooms
Bath with shower over or shower only White ceramic sanitary ware Chrome finish taps and fittings Partially tiled walls
Balconies
Apartments with main balcony have external finish and concrete handrail Secondary smaller concrete balcony with metal handrails (not in all types)
Heating and controls
Electric panel radiators Telephone, TV and satellite points Broadband connection facilities (usual customer subscriptions apply) Secure door entry system (audio)
Common areas
Streets in the Sky (secure residential access only) Lifts to all Street levels Shared feature entrance lobby Central refuse chute with designated recycling adjacent to the main entrance CCTV coverage of the main points of access
Parking
Available at additional cost Limited availability



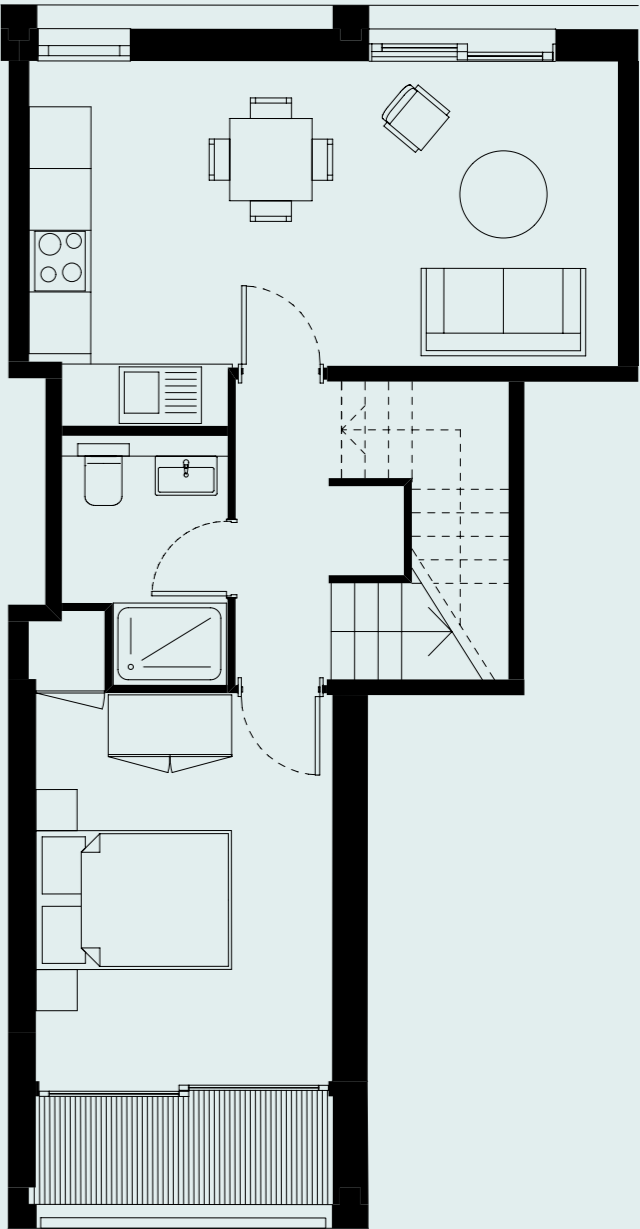
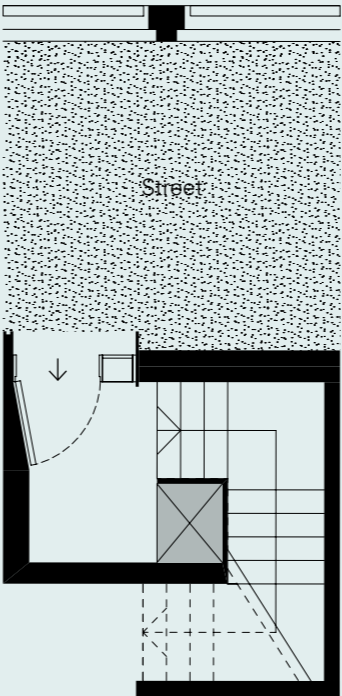
— Street level

↓ Below street level



— Street level

↓ Below street level



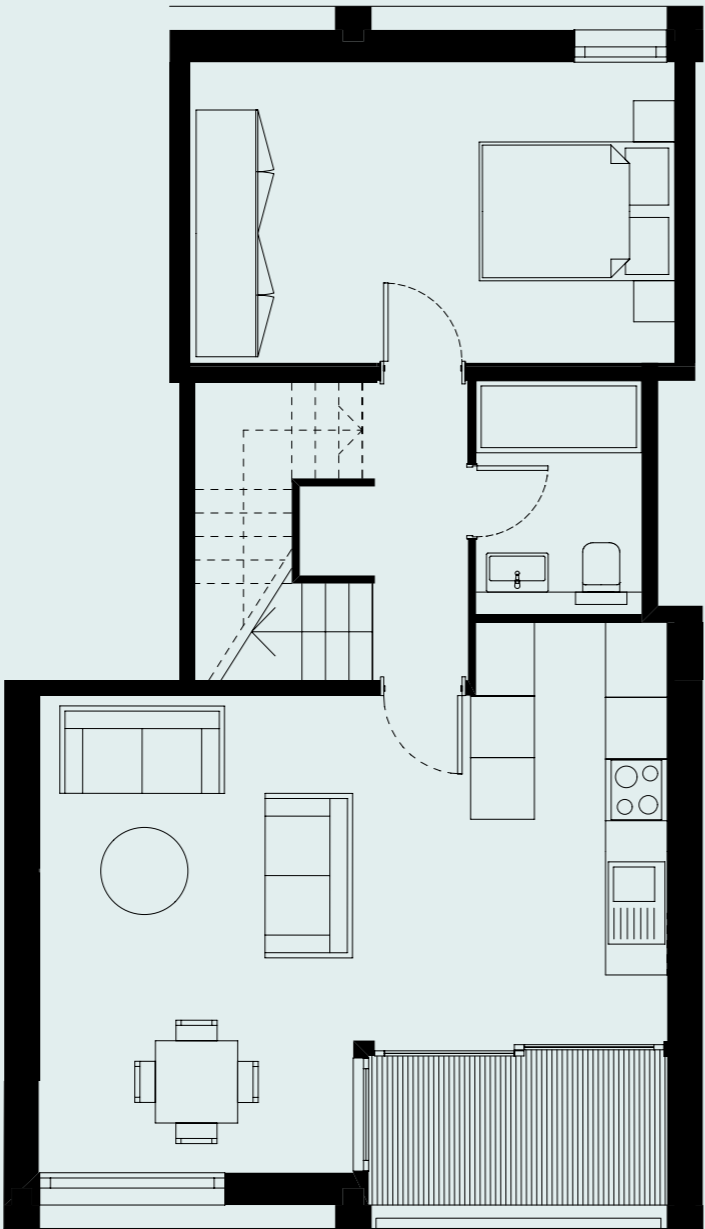
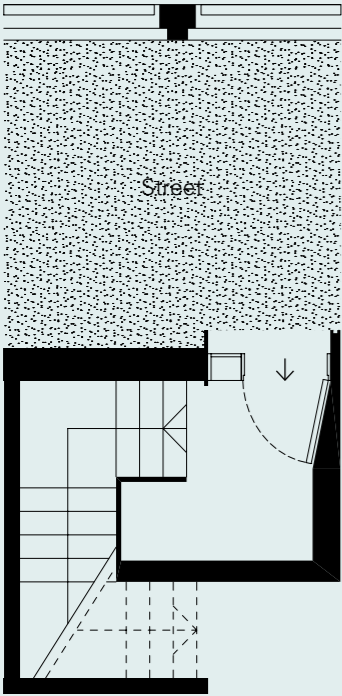
⊗ Area not included in certain flank D apartments, please speak to a sales consultant for further details.
Park Hill — 1 bedrooms

⊗ Area not included in certain flank D apartments, please speak to a sales consultant for further details.

Type	Apartments		Streets	Locations
H2	5	104 130 137 148 155	Norwich	
	5	104 130 137 148 155	Long Henry	
	—	—	Hague	

— Street level

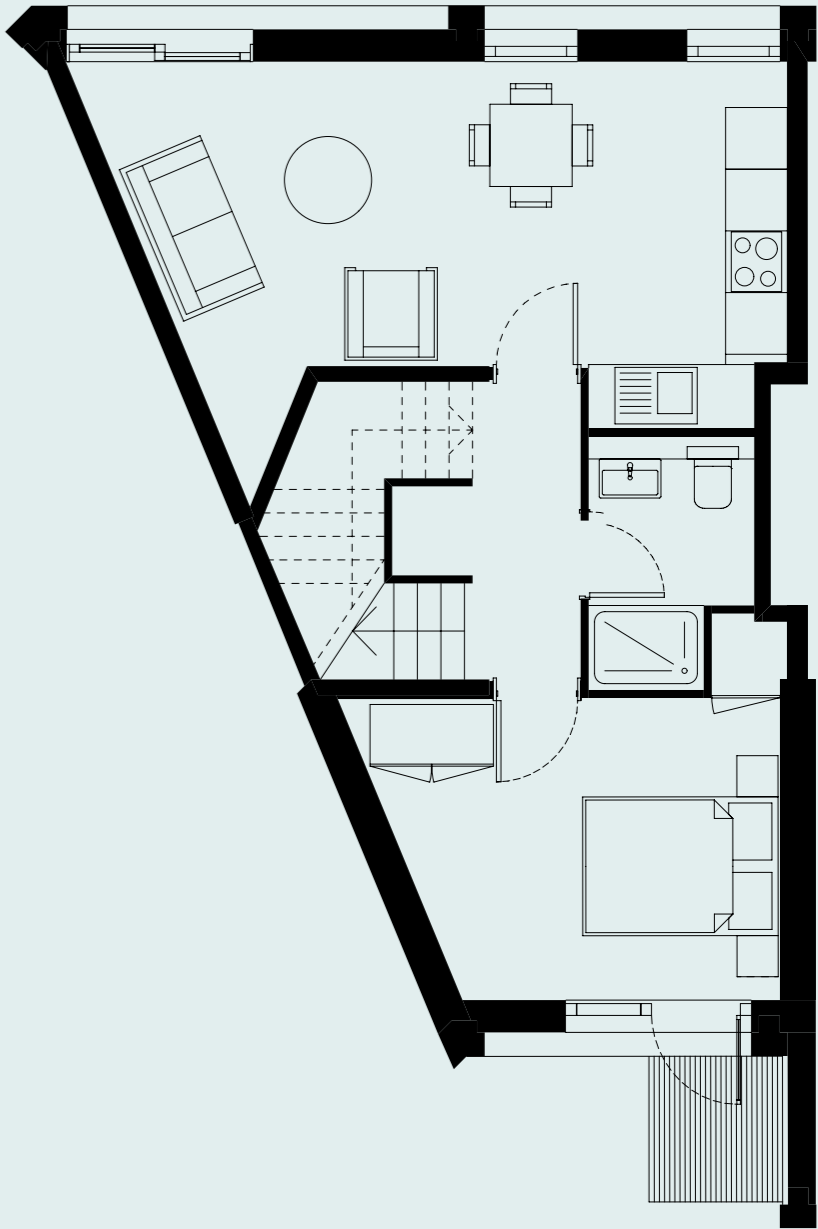
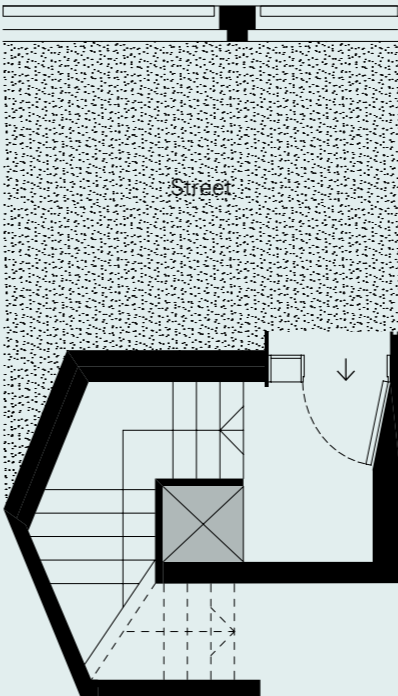
↓ Below street level



Type	Apartments		Streets	Locations
M1	2	96 97	Norwich	
	2	96 97	Long Henry	
	—	—	Hague	

— Street level

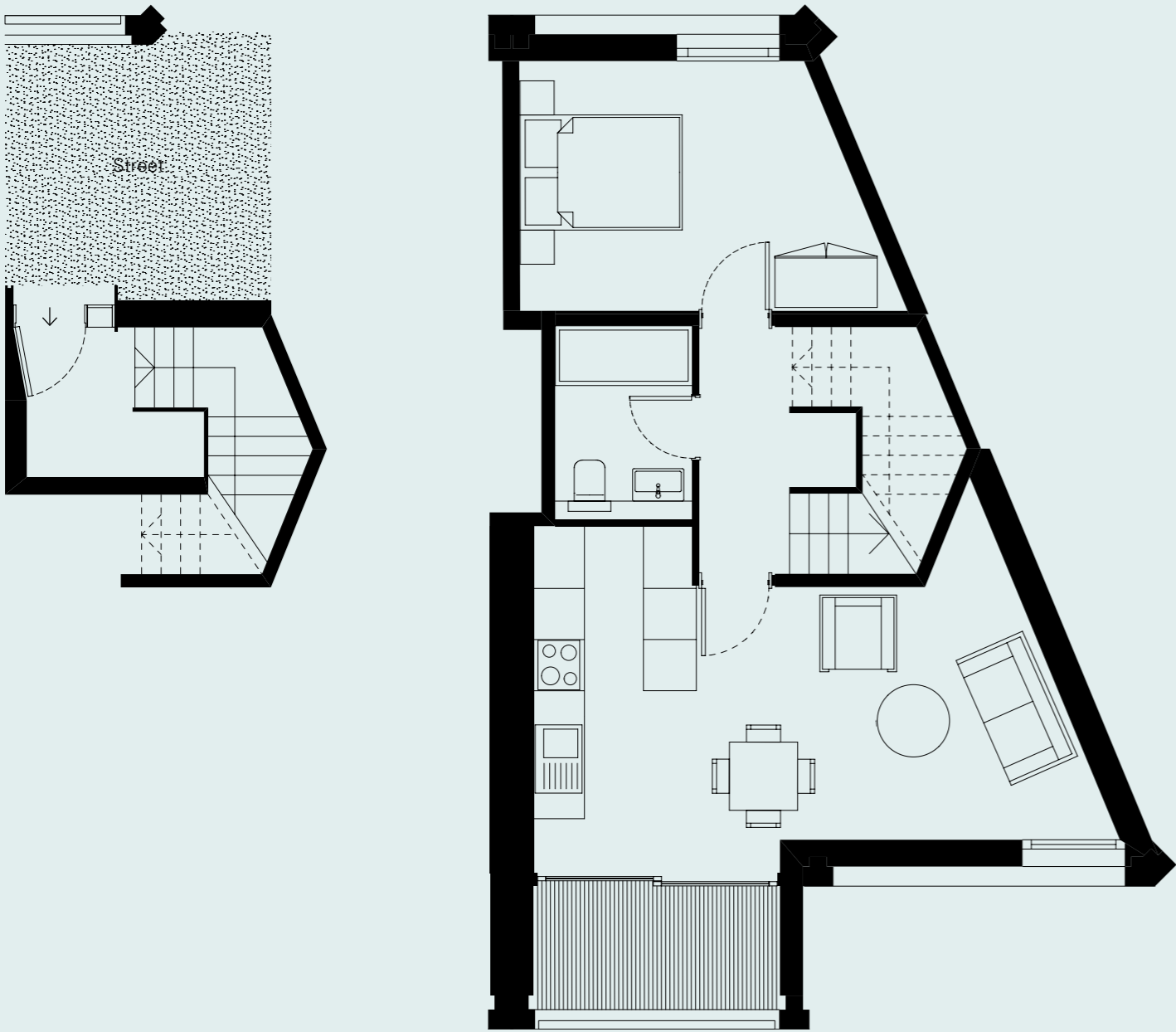
↓ Below street level



Type	Apartments	Streets	Locations
M2	2 140 141	Norwich	
	2 140 141	Long Henry	
	—	Hague	

— Street level

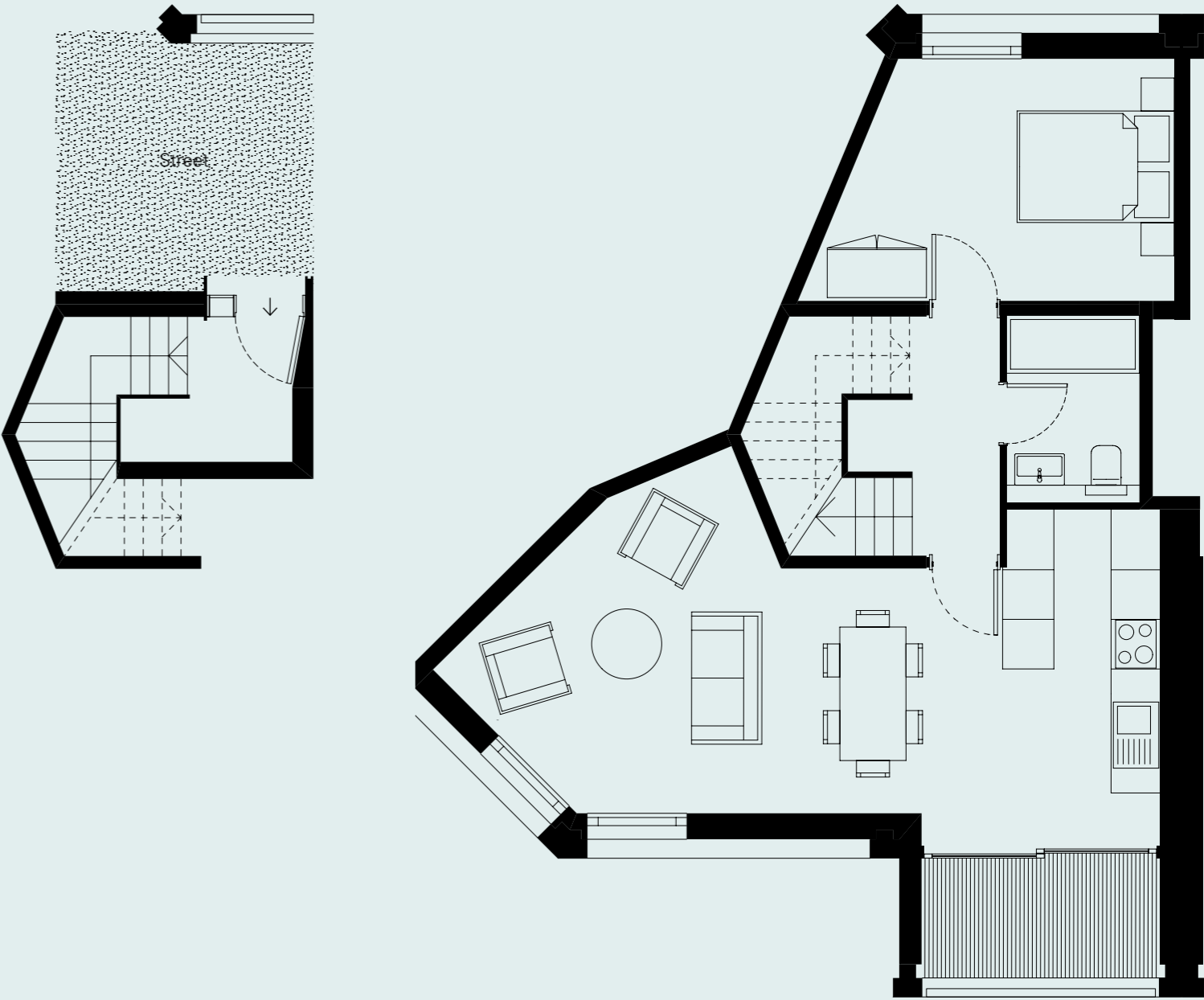
↓ Below street level

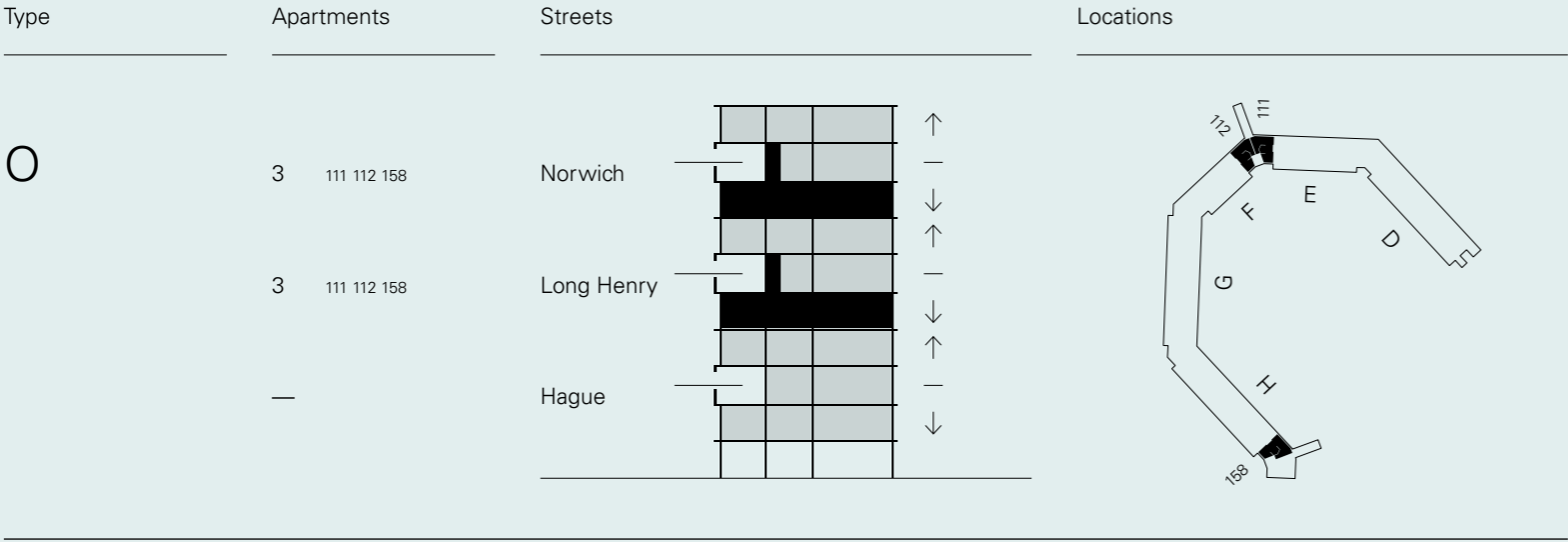


Type	Apartments	Streets	Locations
M2+	1 123	Norwich	
	1 123	Long Henry	
	—	Hague	

— Street level

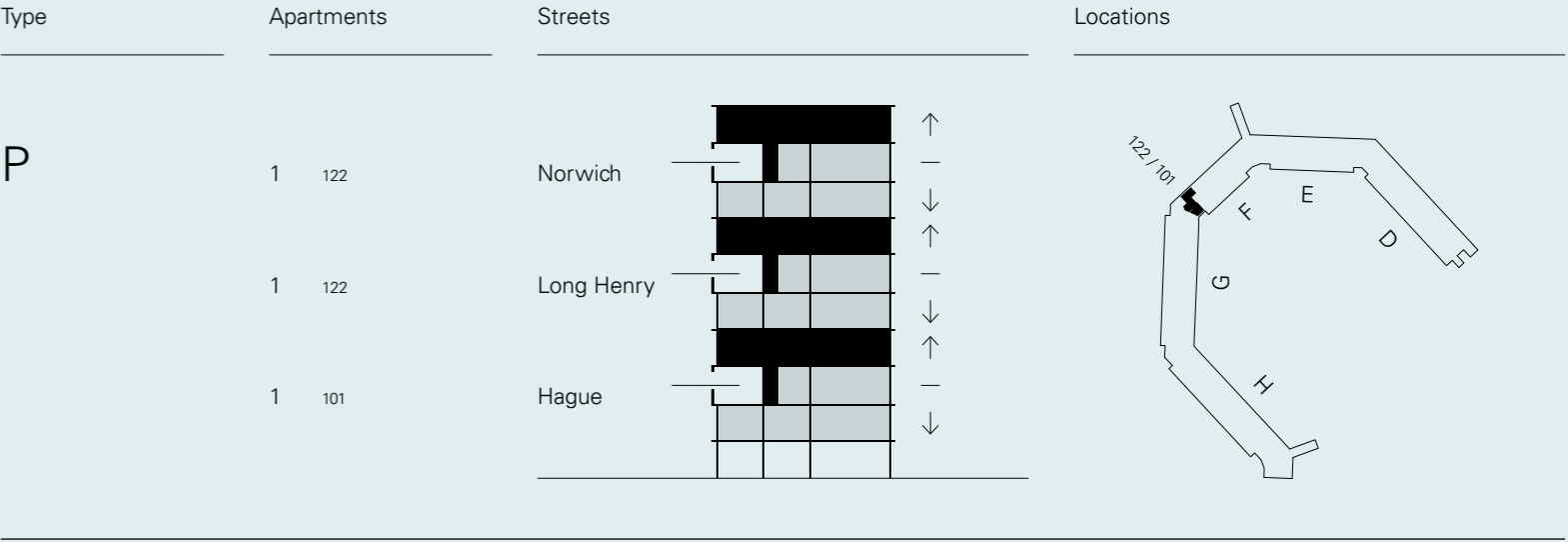
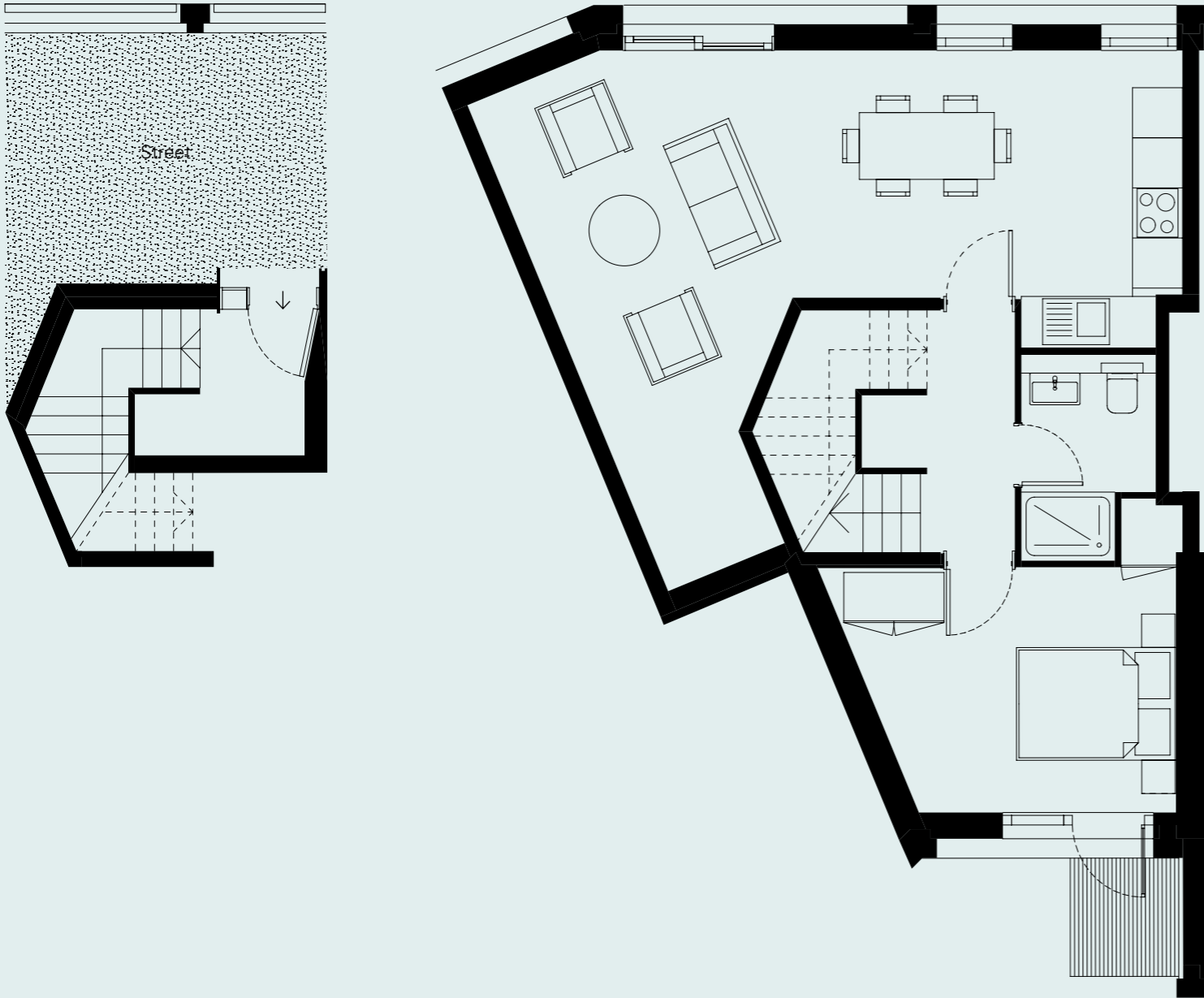
↓ Below street level





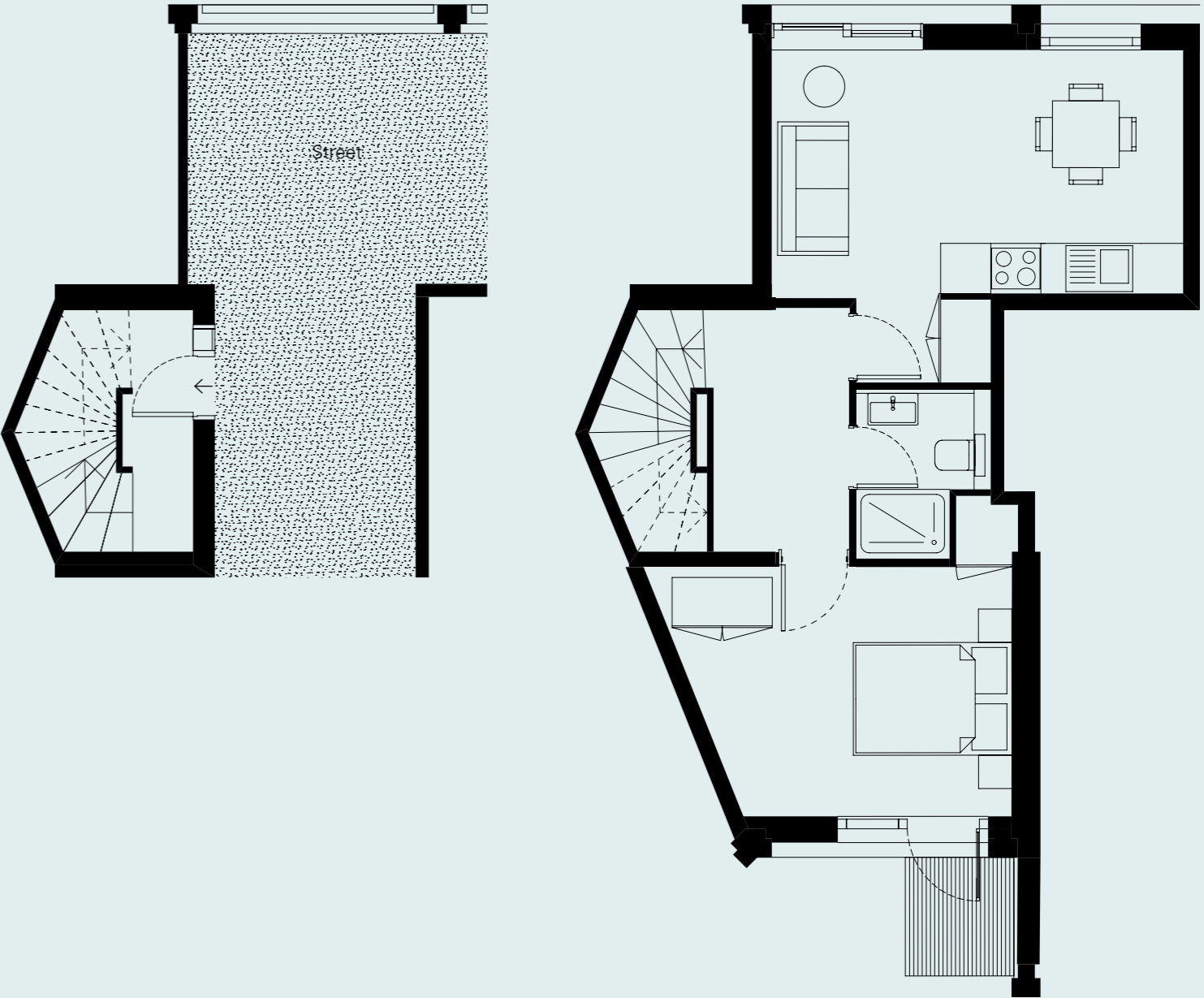
— Street level

↓ Below street level



— Street level

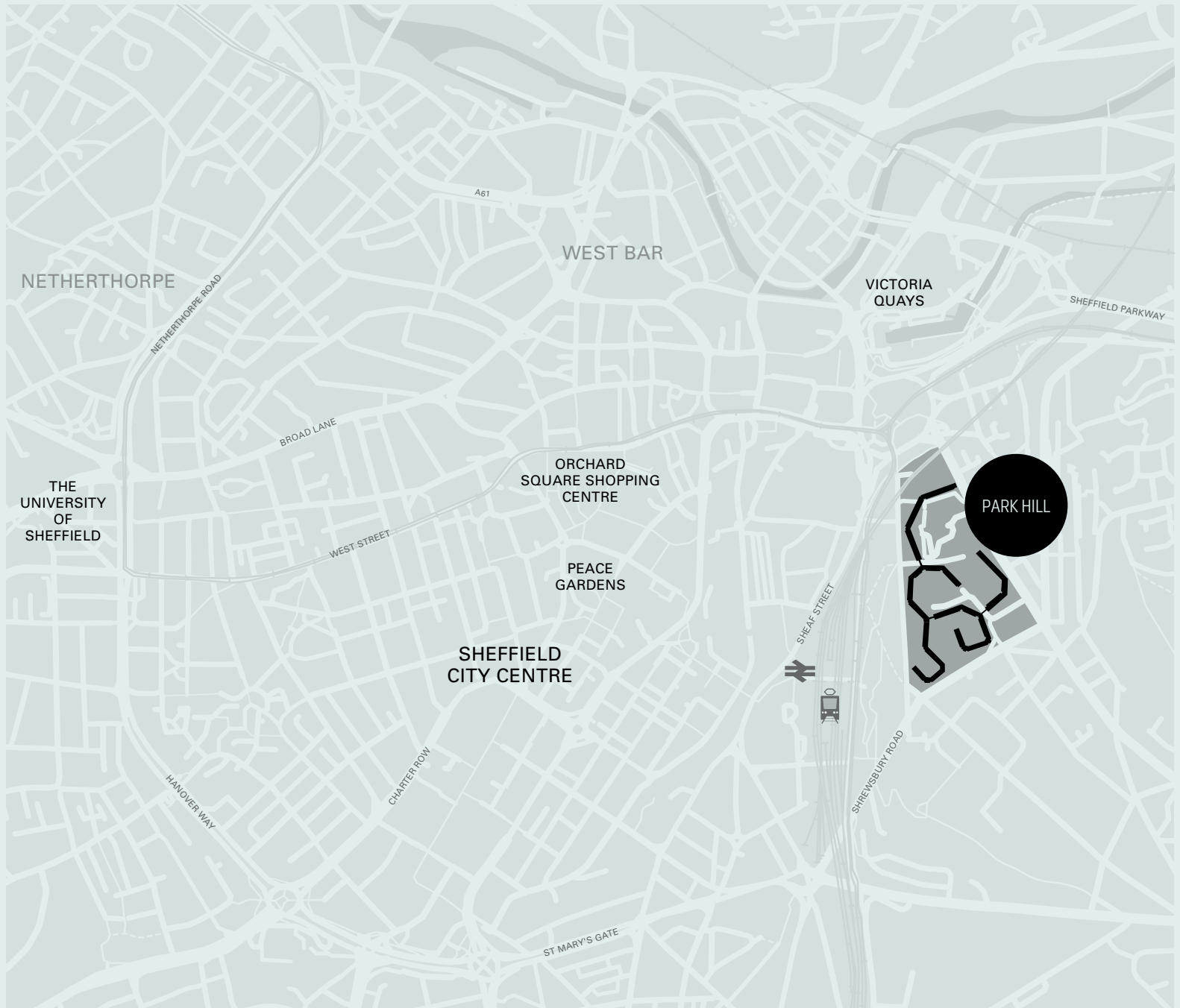
↑ Above street level



Location

Park Hill
Sales Office and Marketing Suite
South Street
Sheffield
S2 5PN

Open Tuesday – Saturday from 11am – 6pm (8pm Thursday)



urbansplash × **Places
for People**

live@urbansplash.co.uk
0114 303 0375

The Small Print

Whilst these particulars are believed to be correct, their accuracy can not be guaranteed and there may be some variation to them. Purchasers and tenants are given notice that: 1) These particulars do not constitute any part of an offer or contract. 2) All statements made in these particulars are made without responsibility on the part of the agents or the developer. 3) None of the statements contained in these particulars are to be relied upon as statement or representation of fact. 4) Any intended purchaser or tenant must satisfy him/herself by inspection or otherwise as to the correctness of each of the statements contained in these particulars. 5) The developer does not make or give, nor any person in their employment has any authority to make or give any representation or warranty whatever in relation to House, or any part of it. 6) The selling agents do not make or give, nor any person in their employment has any authority to make or give any representation or warranty whatever in relation to House or any part of it. Date of Publication January 2020.