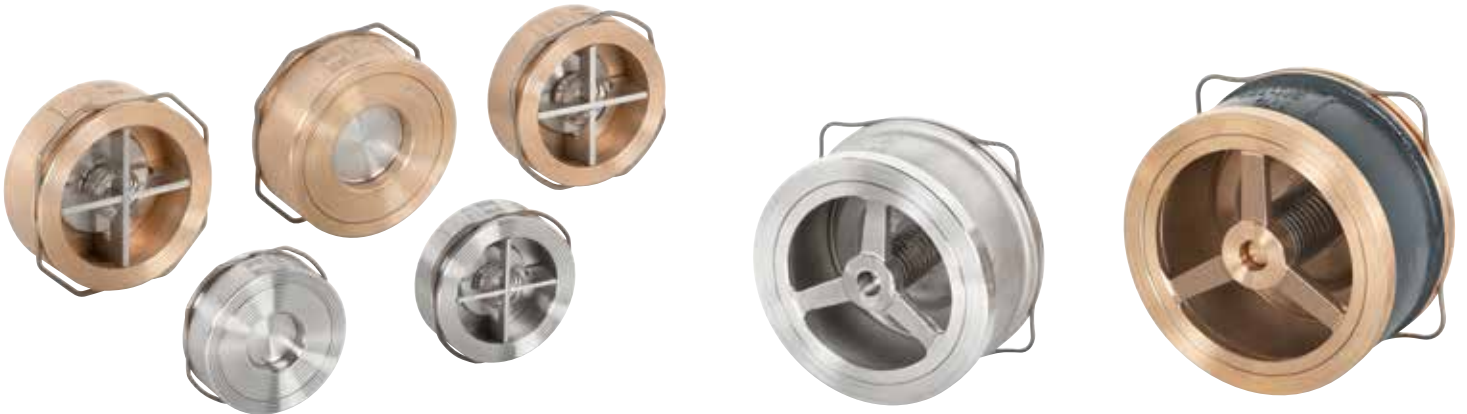


Check

Disc check valve



Mod. 170 EN ASME/ANSI

Mod. 172 EN ASME/ANSI

Connection: For placing between flanges
DN: 15 to 100

Material: ■ Bronze. PN-16
■ Cast steel. PN-40
■ Stainless steel. PN-40

Seal: ● Metal

Connection: For placing between flanges
DN: 125 to 300

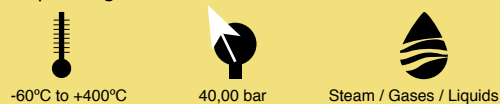
Material: ■ Cast iron. PN-16
■ Bronze. PN-16
■ Cast steel. PN-40
■ Stainless steel. PN-40

Seal: ● Metal

Disc check valve with centering ring for placing between flanges in accordance with DIN, UNE, ANSI, BS, etc. DN -15 to 100.
Face-to-face dimensions in accordance with EN-558, basic series 49.

Disc check valve with centering ring for placing between flanges in accordance with DIN, UNE, ANSI, BS, etc. DN -125 to 300.
Face-to-face dimensions in accordance with EN-558, basic series 49 and 51.

Depending on version



Depending on version

