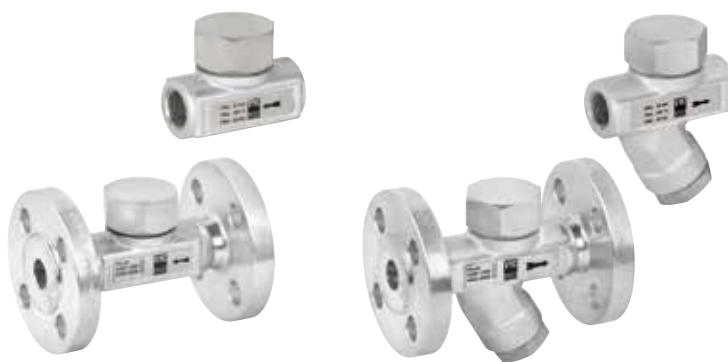


Steam traps

Piston check valve



Thermodynamic steam trap



041-042 without filter

043-044 with filter

Mod. 179 EN ASME/FNPT ASME/SW

Mod. 041 EN ASME/FNPT ASME/SW

- Connection: Female thread GAS
 Female thread NPT
 Socket welding ends SW
 R: 1/4" to 2"
 Material: ■ Brass. PN-200
■ Cast steel. PN-250
■ Stainless steel. PN-250
 Seal: ● Metal

Check valve with spring operated piston closure.

Mod. 043 EN ASME/FNPT ASME/SW

- Connection: Female thread GAS
 Female thread NPT
 Socket welding ends SW
 R: 1/2" to 1"
 Material: ■ Stainless steel. PMA. 63 bar
 Seal: ● Metal

Mod. 042 EN ASME/ANSI

Mod. 044 EN ASME/ANSI

- Connection: Flange x Flange
 DN: 15 to 25
 Material: ■ Stainless steel. PMA. 63 bar
 Seal: ● Metal

For the extraction of steam condensates.
 For use in: steam piping, irons, laundries, tanks and vessels with condensate discharge, multiple plate presses, vulcanizing autoclaves, pressure reduction equipment, etc.

Depending on version



Depending on version

