

Circular transparent lenses



For sight glasses

Model 006



For visual checking of fluids in all types of vessel, including those under pressure, in special thermal and chemical conditions. Also for checking processes.

The quality of the sight glass satisfies the most demanding safety standards and industry guarantees in general.

Specifications

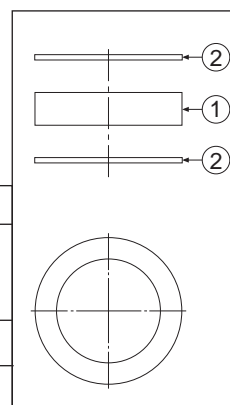
- Boron silicate glass of high chemical stability.
- Of great purity and homogeneity.
- Low thermal expansion coefficient.
- Thermally prestressed which guarantees high mechanical resistance.
- High resistance to sharp changes of temperature, pressure and chemical aggression, guaranteeing a long life.
- Joint surfaces are perfectly flat.
- If the glass is accidentally broken it does not shatter.
- Satisfies the international standards: DIN-7080, Ö Norm M7353, etc.

IMPORTANT

Depending on demand:

- Other types of joints: Cardboard type klingerit acidit, PTFE (Teflón), etc.

Nº.PIECE	PIECE	MATERIAL
1	Glass	Boron-Silicate
2	Joint	Graphite
OPERATING CONDITIONS	PRESSURE IN bar	10/16/25/40 (See MAXIMUM SERVICE PRESSURE IN bar.)
	MAXIMUM TEMPERATURE IN °C	280 ÷ 300



D x b	MAXIMUM SERVICE PRESSURE IN bar.	TOLERANCES		PARALLELISME TOLERANCES < =	d1	d2	B	WEIGHT IN Kgs.	CODE
		D	b						
45x10	40	+0,50 -0,50		0,20	45	32	1,50	0,38	2101-006.8451
63x10	16				0,81	2101-006.5631			
63x15	40				1,13	2101-006.8631			
80x12	16				1,49	2101-006.5801			
80x20	40				2,34	2101-006.8801			
100x15	16				2,75	2101-006.5001			
100x25	40				4,14	2101-006.8001			
125x20	16	+0,80 -0,80	0,25	125	100	5,67		2101-006.5251	
125x30	40	+0,50 -0,25				7,65		2101-006.8251	
150x25	16	+0,80 -0,80				9,90		2101-006.5501	
150x30	25					11,70		2101-006.6501	
175x25	16					+0,80 -0,40		14,16	2101-006.5751
175x30	25	-0,40				16,82		2101-006.6751	
200x30	16					200		175	21,85
250x30	10	+1,00 -1,00	0,30	250	225	34,68	2101-006.3501		

Chemical properties

Hydrolytic resistance	0,019	ISO-719	CLASS-1
	0,030	ISO-720	CLASS-1
Acid resistance	0,2	DIN-12116	CLASS-1
Alkaline resistance	89	ISO-695	CLASS-2

Physical properties

Type of glass.....	Ggl 490
Average coefficient of linear expansion $\alpha_{20^{\circ}\text{C}/300^{\circ}\text{C}}$	$<5 \cdot 10^{-6} \text{ K}^{-1}$
Transformation temperature according to DIN-52324.....	575°C
Temperature of the glass at viscosities dPas (Poise):	
10^{13}	553°C
$10^{7,6}$	775°C
10^4	1.225°C
Density.....	2,39 g/cm ³
Elasticity modulus.....	73,54 N/mm ²
Poisson index.....	0,19 μ
Specific thermal tension $\varphi = \frac{E \cdot \nu_{\infty}}{1 - \mu}$	0,405 Nmm ⁻² K ⁻¹
Thermal conductivity λ	$1,168 \cdot \frac{W}{m \cdot K}$
Refraction index $n_d \lambda = 587,6 \text{ mm}$	1,494
Photoelasticity constant K.....	$2,9 \cdot 10^{-6} \text{ mm}^2/\text{N}$

