

#LEAFMarque

A Proud Heritage Looking to the Future: LEAF Marque and Sustainability

**Simon Day,
Farm Manager, Worth Farms Ltd**

AH Worth

A Proud Heritage Looking to the Future
LEAF Marque and Sustainability



AH Worth

A Fourth Generation Family Business

- 1st Generation, AH Worth 1895
- 2nd Generation, G.A Worth joins in 1928 (39-45 in War)
- 3rd Generation, Tony Worth joins in 1967
- 4th Generation, Duncan Worth joins in 1995
- 5th Generation, is taking a keen interest in Agriculture



AH Worth Family Business Timeline



1895

The Worth family
commenced
farming

1968

Joined forces with
local growers to form
HMC

1979

Built potato packing
business with M&S

1996

Packing business
became wholly
owned subsidiary

1996

Became a LEAF
Demonstration Farm

2008

Became LEAF
Marque certified

2002

Started renting land
from Jepco

2002

Commenced HCCT
Agreement

2003

Tracks and Auto
guide Steering
Introduced

2007

GPS Section control
on sprayers
introduced

2012

Yara N Sensor
introduced

2015

Win Food and
Farming, Farm
Business of the Year

Farming

‘At the heart of what we do’

- 2,300ha of grade 1 alluvial silt
- 260ha of potatoes, producing c. 15,000t
- Other rotational crops
 - Vining peas, Sugar beet, Maize, Rye, Spring barley and Mustard
- Land is rented out for specialist crops
 - Salads, brassicas, celeriac



Farming

‘At the heart of what we do’

- A team of 10 highly skilled staff with their own specific roles
- Up to 15 students for harvest
- All product produced to the highest protocols
- We work with our neighbours, both contract farming and contracting operations



Potatoes

- Grown for the Pre-Pack market via QV Foods

Manor Fresh

- PCN is our biggest issue
- Biofumigant are helping to reduce chemicals
- Rotations have moved from a 6 to 8 year cycle
- Machinery and growing re structure in 2010.
- Reducing Cultivations
- New Resistant and tolerant varieties being trialled



What is Sustainability?

- The ability to be maintained at a certain rate or level
- Avoidance of the depletion of natural resources in order to maintain an ecological balance



What does that mean for Worth Farms?

- Being committed to farming our land in a sustainable and responsible way to maximise financial return whilst protecting and enhancing the natural landscape
- Ensuring the farm is passed onto the 5th generation in a better condition than the 4th received it



Integrated Farm Management (IFM)

- Setting the framework for farmers to adopt sustainable business solutions
- Combining the best of modern technology with traditional methods that enriches the environment and engages the local community
- Attention to detail is key, making better, smarter use of all resources on the farm
- Integrated Pest Management (IPM) is a core part



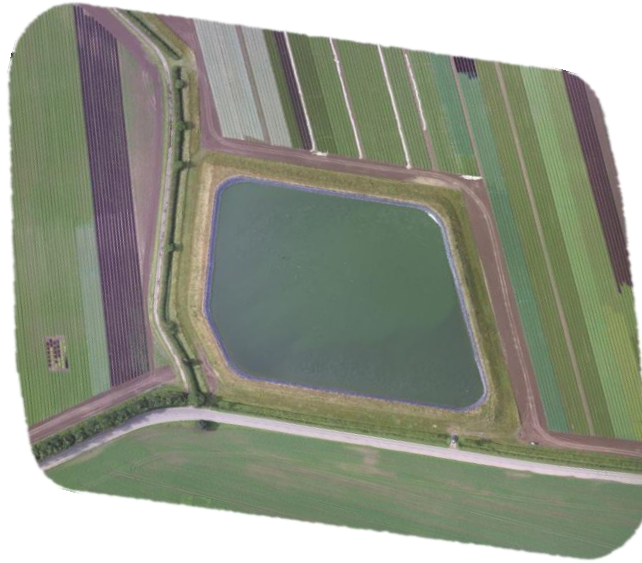
Soil

- Our most important asset
- RTK guidance used to reduce over trafficking
- Tracks used to reduce ground pressure
- Cover Crops
- Reducing cultivations and ploughing



Water

- 25 million gallons of storage built
- Roof and yard water captured
- Pack house water cleaned and UV treated
- Abstraction of saline water
- Potatoes irrigated for skin finish
- Working with others on application and storage



Environment

- LEAF Demonstration Farm since 1996
- LEAF Marque standard
- ELS and HLS scheme still running on one holding
- Barn Owls and Marsh Harriers tagged each year
- Un-farmable areas set aside for wildlife
- Rotational hedge and ditch management



Anaerobic Digestion

- 1.5Mwh Plant
- Built by Tamar Energy
- JV with AHW
 - Holbeach Biogas
- 30,000t of feedstock
 - 12,000t grown
 - 8,000t potato peel
 - 10,000 local vegetable waste
- Digestate applied as an organic fertiliser to growing crops



Community Engagement

- Open Farm Sunday
- Tractors into Schools
- Website www.worthfarms.co.uk
- Twitter @Worth_Farms @simonjeday
- LEAF Boards
- Local Paper
- Golf Course



But, Mother Nature has the final say!!!



Harvest 2012, a wet one



July 2016, Hail damage across the farm



AH Worth

Naturally **Grown** for you . . .

Thank you for listening



www.worthfarms.co.uk @Worth_Farms @simonjeday

