

TYPE B

Picture polished wooden floors, high spec kitchens with wine coolers, and en-suite bedrooms with freshly tiled bathrooms, all lit by lighting that compliments the stylish architecture and fixture fittings. Combine the eco-friendly design with the natural beauty surrounding it that can be admired from the outdoor decking area located to the rear and side of each property, and soon be inspired to live a life made for living.

GROUND FLOOR

Bedroom 1
4.7m x 5.0m

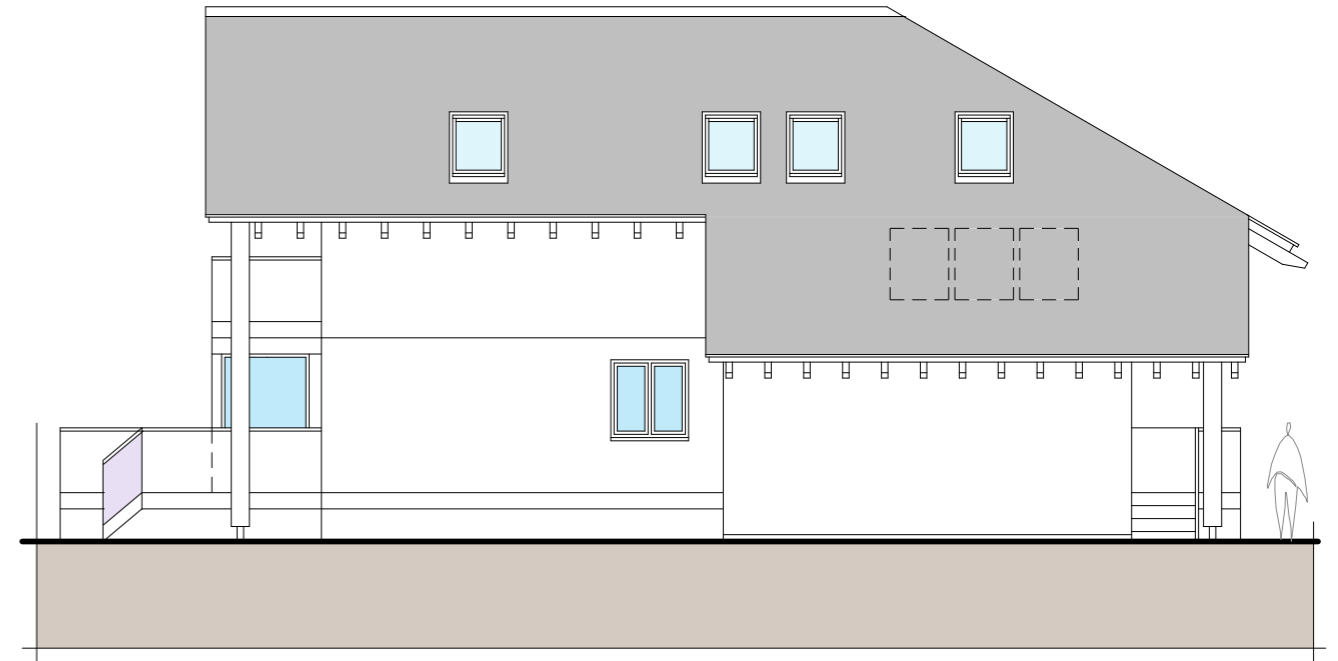
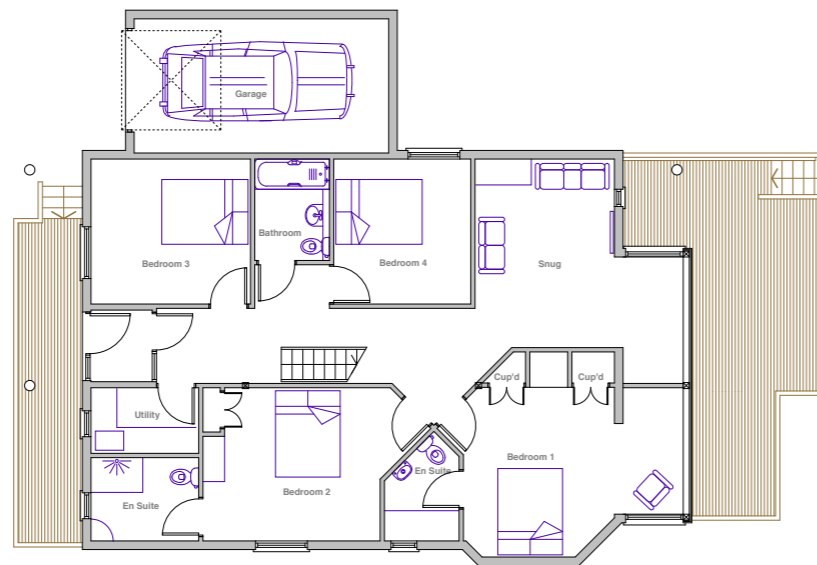
Bedroom 2
3.5m x 4.1m

Bedroom 3
3.3m x 3.7m

Bedroom 4
3.3m x 3.2m

En-suite - Bedroom 1
1.7m x 2.5m

En-suite - Bedroom 2
1.9m x 2.5m



FIRST FLOOR

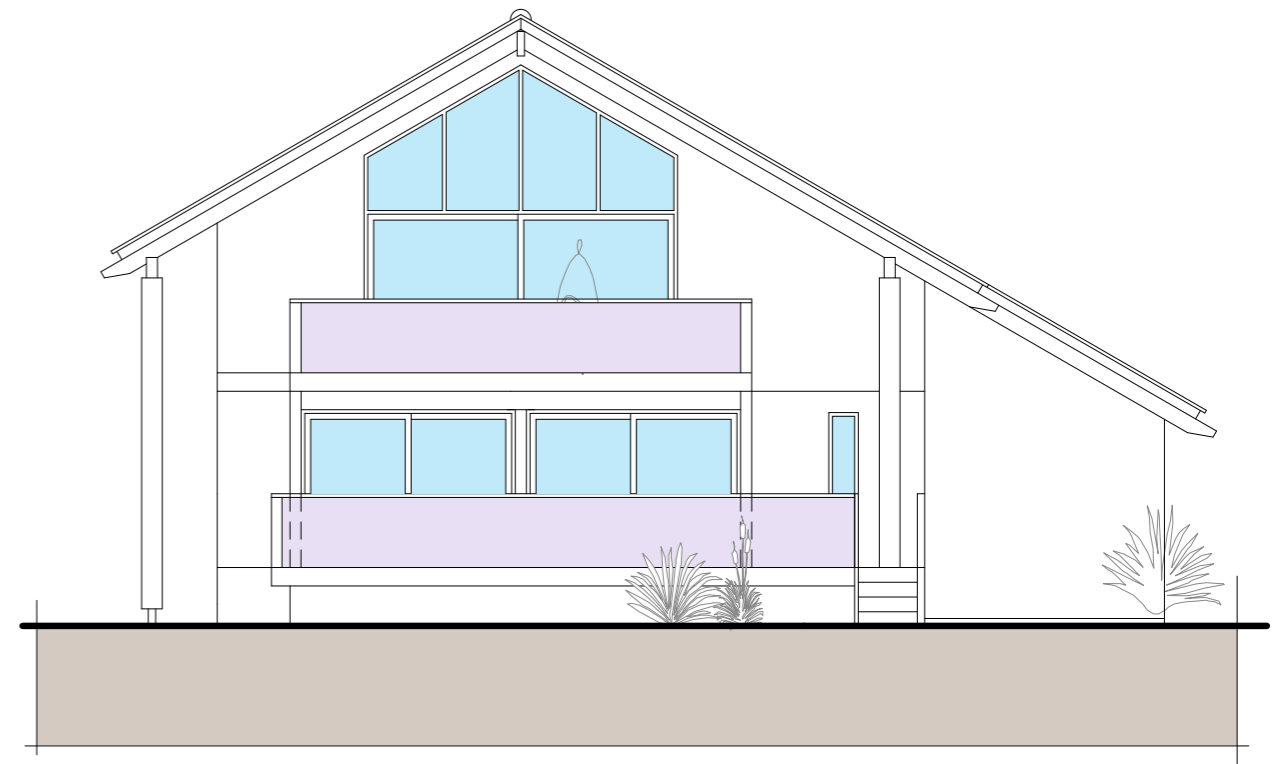
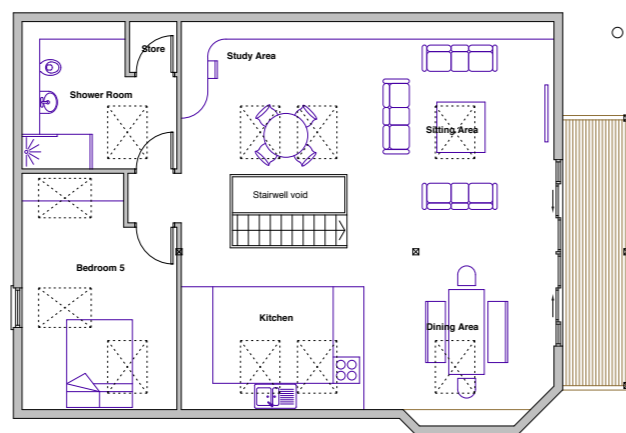
Bedroom 5
3.5m x 5.4m

Shower/Toilet
3.4m x 3.5m

Kitchen
3.7m x 4.2m

Dining Area
3.5m x 4.2m

Sitting Area
4.3m x 8.9m



TOTAL FLOOR AREA

225 square metres
2419 square feet