

DISCOVER A PLACE, AND PEOPLE,
DEVOTED PURELY TO PLEASURE... AND
THE FASTEST ACCESS TO THE PISTES.

SKI IN. SKI OUT.

GO YOUR OWN WAY. PUT SNOW
BEFORE SHOW AND FUN BEFORE
FORMALITY. WITH THE GLITZ OF
ST. MORITZ A 10-MINUTE DRIVE
AWAY, FIND SINCERE SERVICE
AND AN AUTHENTIC EXPERIENCE.

AT NIRA ALPINA WE PUT PLEASURE
BEFORE PROTOCOL... AND WE PUT
YOU IN THE HEART OF THE MOUNTAINS.

WAY ABOVE LAKE SILVAPLANA, WE'RE LINKED
VIA CABLE CAR TO THE HIGHEST STATION IN
THE REGION. FROM HERE, YOU CAN TAKE
THE THRILLING 9 KM DESCENT TO ST. MORITZ.





NIRA ALPINA IS CONNECTED TO THE CORVATSCH
CABLE CAR STATION, PROVIDING DIRECT ACCESS
TO THE REGION'S MOST CHALLENGING SKI RUNS.



NIRA ALPINA'S QUIRKY STYLE CONFIRMS OUR STATUS AS A MEMBER OF DESIGN HOTELS. OUR GUEST SERVICES ARE DESIGNED TO MEET ALL REQUESTS WITH GENUINE, WARM-HEARTED CARE.



WITH NATURAL MATERIALS, TEXTURES AND COLOURS THE CORVATSCH ROOMS BRING NATURE INSIDE. EACH ROOM HAS A TERRACE WITH MOUNTAIN VIEWS.



THE ROOMS AT GROUND LEVEL OPEN OUT ONTO PRIVATE GARDENS. INSIDE, DARK CHOCOLATE SUEDE, RICH MAHOGANY DAMASKS AND STONE TILES ARE CONTEMPORARY TOUCHES.



ON THE UPPER FLOOR, THE ALPINE JUNIOR SUITES PROVIDE ELEVATED VIEWS OF THE ENGADIN VALLEY. EACH SUITE HAS A LIVING ROOM AND DRESSING ROOM.



THE SIX-FOOT WIDE SUPER-KING BED HAS ORGANICALLY-GROWN COTTON LINEN AND THE GRANITE BATHROOMS HAVE DEEP BATHS AND A WATERFALL SHOWER.





OUR CUISINE IS NATURAL AND FRESH,
WITH MOST INGREDIENTS FARMED, CAUGHT,
RAISED OR BRED WITHIN A FEW KILOMETRES.
OUR CHEF'S INSPIRATION COMES FROM AFAR.



OUR BREAKFAST BREAD AND PASTRIES ARE FRESHLY BAKED IN-HOUSE. OUR JUICES ARE FRESHLY SQUEEZED AND OUR HOT DISHES ARE FRESHLY COOKED TO ORDER.



NIRA ALPINA IS PERFECT FOR FAMILIES SEEKING AN ALPINE ADVENTURE. OUR FAMILY-FRIENDLY RESTAURANTS OFFER EXTENSIVE MENUS DESIGNED ESPECIALLY FOR KIDS.





SERVING DELICIOUS DISHES FROM AROUND THE WORLD, STARS RESTAURANT OVERLOOKS PANORAMIC VIEWS OF THE ENGADIN MOUNTAIN RANGE.





OFFERING THE PERFECT COMBINATION
OF LOCAL TRADITIONS AND COSMOPOLITAN
LIFESTYLE, OUR ROOFTOP BAR IS THE
BLACK RUN OF APRES-SKI.





A TASTE OF TRADITION. THE PIZZERIA STALLA VEGLIA SERVES TYPICAL ITALIAN DISHES. THE AUTHENTIC 'STUBLE' SURROUNDINGS, WITH NATURAL STONE FLOOR, PINE PANELLING AND CHUNKY WOODEN FURNITURE, ARE JUST AS TRADITIONAL AND COSY.

HAND-BUILT FROM SILVER FIR, WITH JUST ONE TABLE HEWN FROM A SINGLE OAK, OUR APRES-SKI HUT, PICHALAIN, IS WARM AND COMFORTING... AS IS THE HEARTY FOOD.





THE ENTICING AROMA OF FRESHLY BAKED BREAD AND PASTRIES WILL LEAD YOU TO OUR IN-HOUSE BAKERY. BE SURE TO TRY OUR DELECTABLE CUP CAKES.





AFTER A DAY ON THE SLOPES OR TRAILS,
EXERCISE YOUR MIND. FROM MARILYN
MONROE TO QUEEN ELIZABETH II, OUR
LIBRARY COVERS ALL INTERESTS.



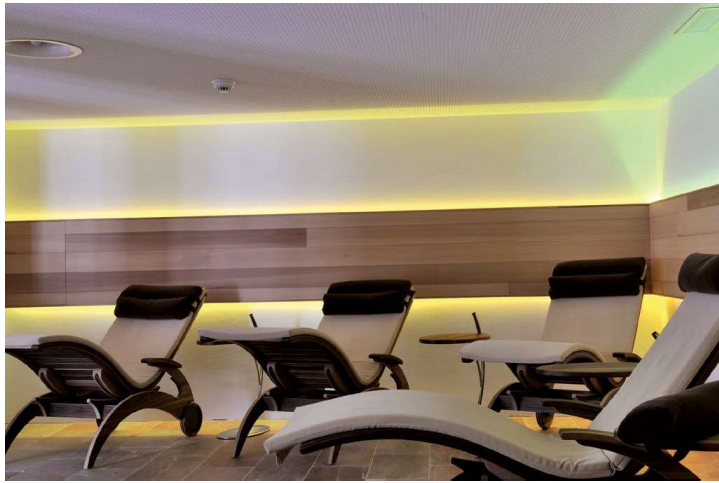
ROOM FOR UP TO 60 PEOPLE TO DISCUSS
THE ISSUES OF THE DAY. DISTRACTED,
QUITE POSSIBLY, BY THE CALL OF THE
MOUNTAINS AND THE LURE OF THE LAKES.





INDULGE IN THE WAYS OF WELLNESS. A
WORKOUT IN OUR GYM, A SPLASH IN OUR
WHIRLPOOL, A WARM-UP IN OUR SAUNA
AND SOME WELL-EARNED RELAXATION.





WE PUT THE 'TREAT' INTO TREATMENTS.
WITH THE DEEP ALPS ENERGY TREATMENT,
PEELINGS, FACIALS AND CLASSIC MASSAGES.

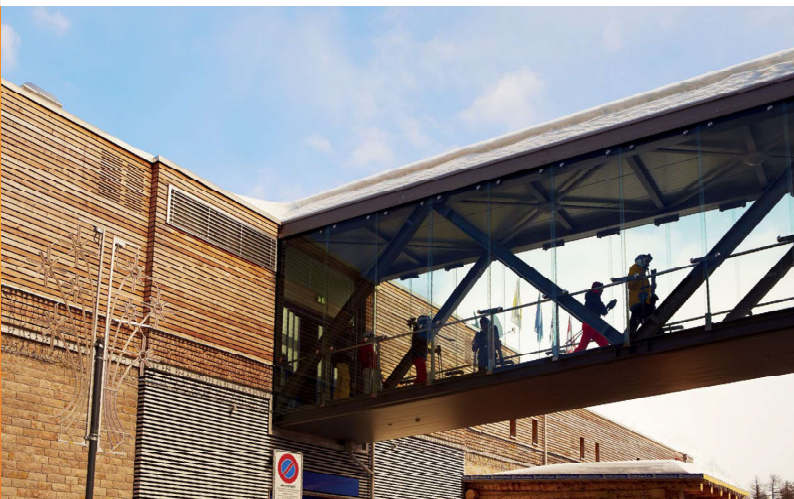


IN JUST 15 MINUTES, ASCEND TO 3.300 METRES,
THE HIGHEST POINT IN THE SKI REGION.
FROM THE TOP OF THE CORVATSCH, TACKLE
THE MOST CHALLENGING PISTES IN ST. MORITZ.





SKI OUT. SKI IN. OUR SKI ROOM IS DIRECTLY LINKED TO THE UPPER FLOOR OF THE CABLE CAR STATION. LEADING TO 17 RED RUNS AND 12 KM OF BLACK PISTE.





ALONG WITH THE FAMED CRESTA RUN, WHITE TURF HORSE RACING AND POLO ON SNOW, THE REGION OFFERS CHALLENGES FOR SNOW-BOARDERS, SKATERS AND SNOW-KITERS.

RELAX ON THE HOTEL TERRACE, OR EVEN
IN THE JACUZZI, AND WATCH THE KIDS GLIDE
BY ON THE NURSERY SLOPE. OUR KIDS' CLUB
OPERATES IN HIGH SEASON.



OUR KIDS' CLUB RIVALS THE NURSERY SLOPES FOR FUN. A QUALIFIED CHILDMINDER TAKES CHARGE AS KIDS RAID THE TOY BOX, GAMES SHELF AND MULTILINGUAL LIBRARY.



AFTER A HIGH-ALTITUDE ADVENTURE ON
PIZ CORVATSCH OR MURTEL, THE ADJOINING
CABLE CAR WILL SWIFTLY - AND DIRECTLY -
BRING YOU BACK TO THE HOTEL.



TASTE THE GREAT OUTDOORS.
SAVOUR THE PURE MOUNTAIN AIR AS
YOU DIP INTO A WELL-STOCKED HAMPER,
FRESHLY PREPARED BY OUR CHEFS.

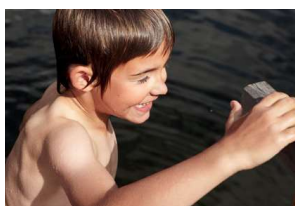




OUR TOWERING PEAKS AND TURQUOISE LAKES CREATE A SPECTACULAR SETTING FOR HIKING. HEAD FOR THE 580 KM OF FOOTPATHS OR TAKE A GLACIER TOUR.



IF OLD-FASHIONED SWIMMING AND SAILING SEEM TOO TAME, TAKE TO THE WATERS FOR A SPOT OF KITE SURFING, WINDSURFING, WHITE WATER RAFTING OR CANYONING.



SUMMER. TIME TO COMMUNE WITH NATURE.
CAST OFF YOUR INHIBITIONS AND EMBRACE
THE JOYS OF THE ENGADIN VALLEY'S LAKES,
MOUNTAINS AND MEADOWS.





WITH 400 KM OF BIKING TRAILS, THE ENGADIN HAS SOME OF THE WORLD'S MOST CHALLENGING TERRAIN, AND SOME OF THE MOST WELCOMING TREATS.





WITH SNOW-CAPPED PEAKS AS A BACKDROP, OUR TERRACE AND BUZZY BAR ARE ATMOSPHERIC VENUES FOR A COCKTAIL OR TWO BEFORE DINNER. COSMOPOLITAN, ANYONE?



WINTER OR SUMMER, YOU'LL FIND
WARM, HEARTFELT SERVICE AND A COOL,
QUIRKY STYLE. YOU'LL FIND PASSION.

YOU'LL SENSE AN AMBIANCE THAT'S
BUZZY, BORDERING ON BOHEMIAN.

YOU'LL FEEL THE SENSUAL JOY OF
PAMPERING PLEASURE, AS YOU FIND
SANCTUARY IN OUR SPA.

YOU'LL TASTE THE WORLD'S FINEST
FLAVOURS, SERVED WITH A TOUCH
OF THEATRE.

ON WITH THE SHOW.

PHOTOGRAPHY

PAGE 02 COPYRIGHT ENGADIN ST. MORITZ: SWISS-IMAGE.CH/ROBERT BOESCH / PAGE 52 COPYRIGHT ENGADIN
ST. MORITZ: SWISS-IMAGE.CH/CHRISTOF SONDEREGGER / PAGE 47 (WHITE TURF) SWISS-IMAGE.CH/ANDY METTLER
(BOB RUN) SWISS-IMAGE.CH/ROGER SCHAFFNER / PAGE 60 SWISS-IMAGE.CH/RALF GLASER

CLOTHING AND EQUIPMENT

PAGES 05, 24-25, 42-49 COURTESY OF SKISERVICE-CORVATSCH.COM / PAGE 9 COURTESY OF MOUNTAINFORCE.COM

INARIA-DESIGN.COM