



Diversity results

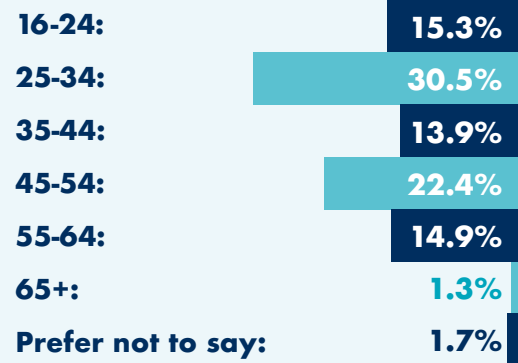
2019 report

Total of 295 staff completed the 2019 diversity survey – 70% of our workforce. Results are based on the number of staff that completed the survey and may not therefore be a true reflection of the entire workforce.

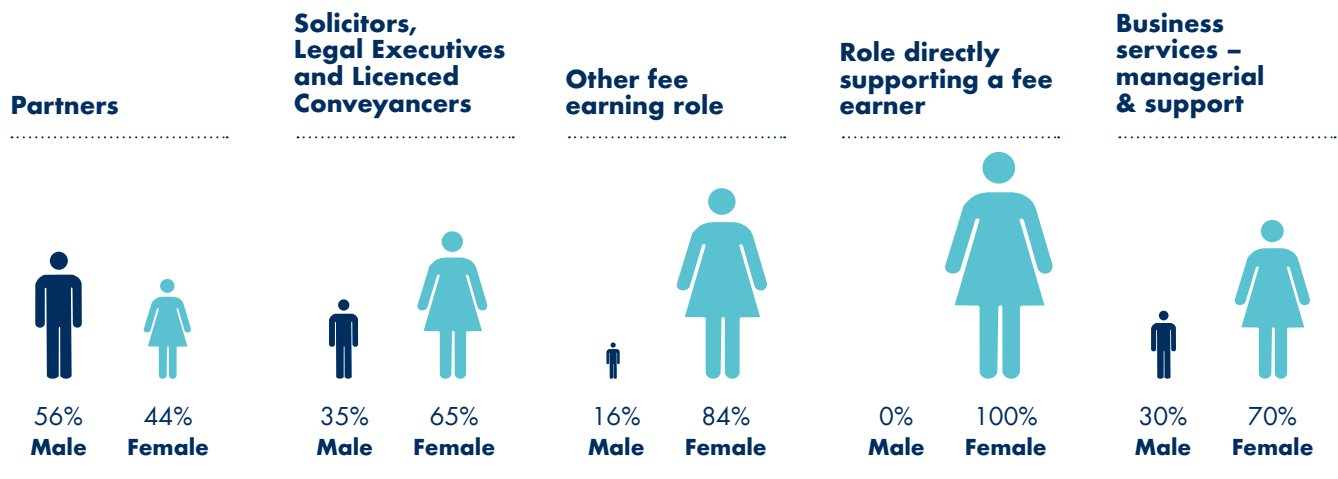
The results

Age distribution of all staff, including partners

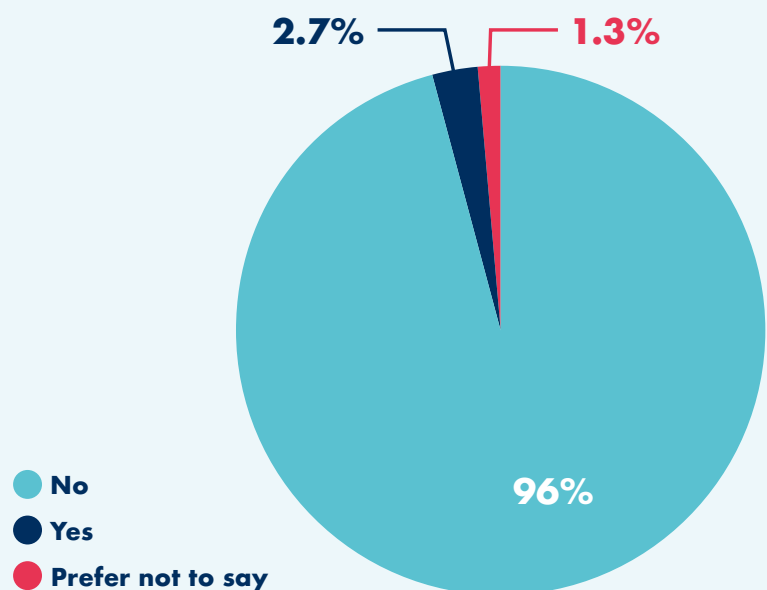
Age groups:



Gender breakdown as a percentage of all staff in accordance with the role categories

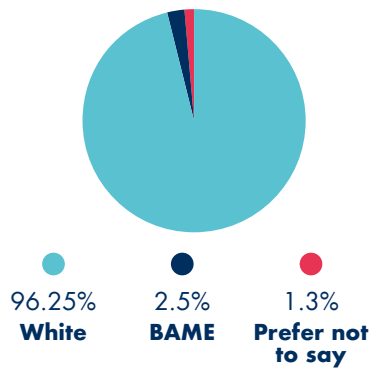


Staff percentage with a disability in accordance with the definition in the Equality Act 2010

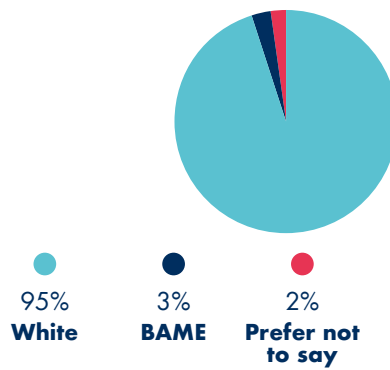


Staff ethnicity breakdown

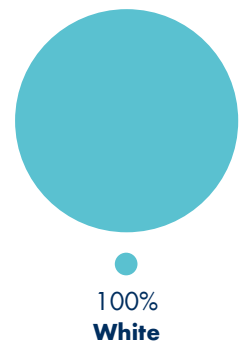
Partners, Solicitors, Legal Executives, Licenced Conveyancers and other fee earners



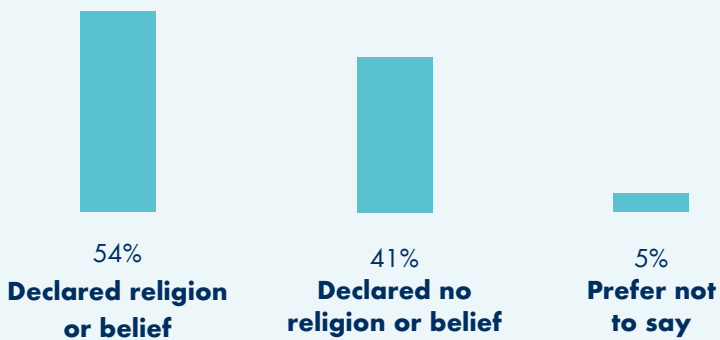
Role directly supporting a fee earners



Business services – managerial & support



Staff Religions or beliefs



Breakdown of type of schools attended between the ages 11 and 16

