

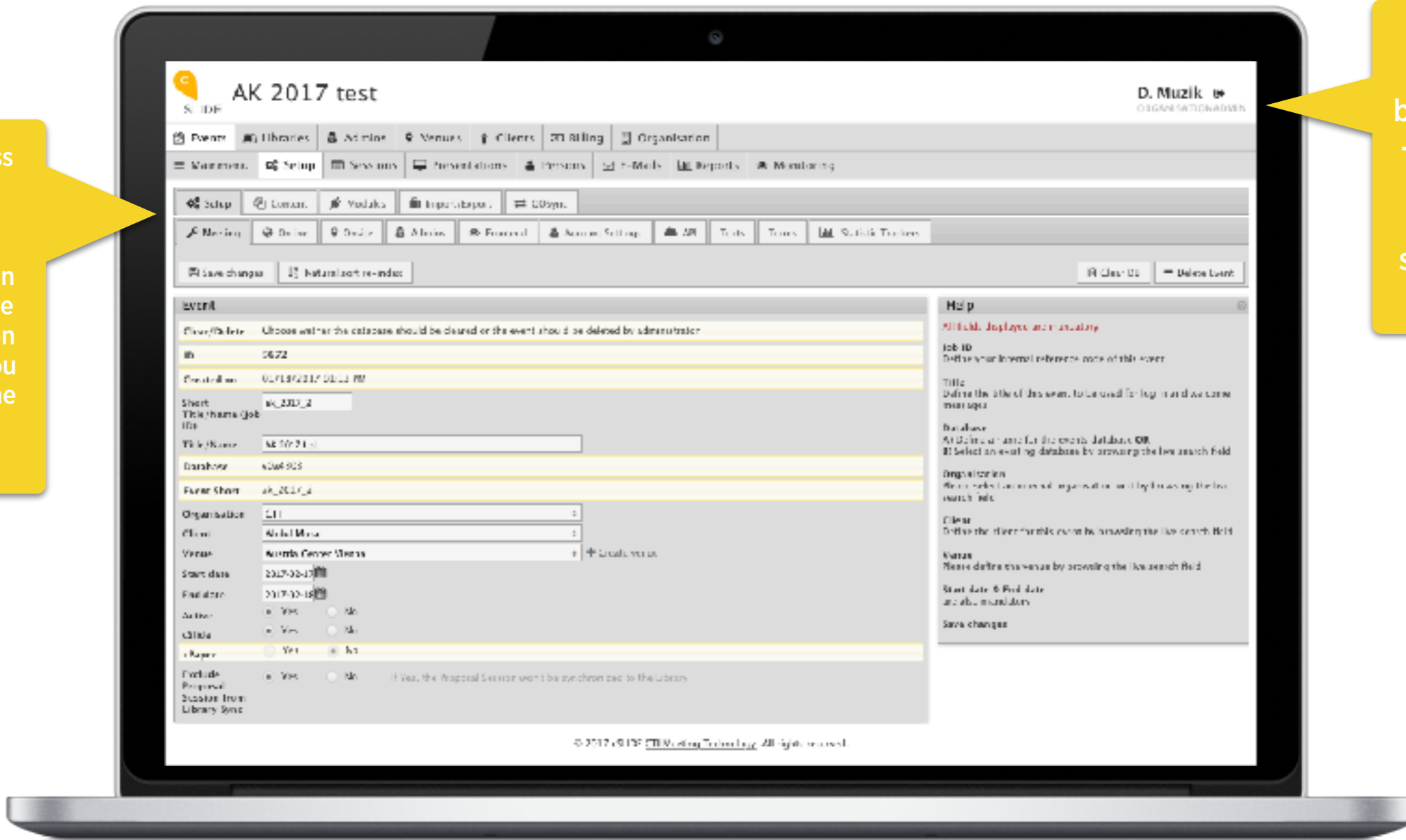


Announcing upgrades to cSLIDE
security and UX/UI



New administrative login offers maximum access from the get-go

Full access at your highest level of permission — if you've been given access, you can see the option here!



No more switching between tabs — your login permission status is shown under your name



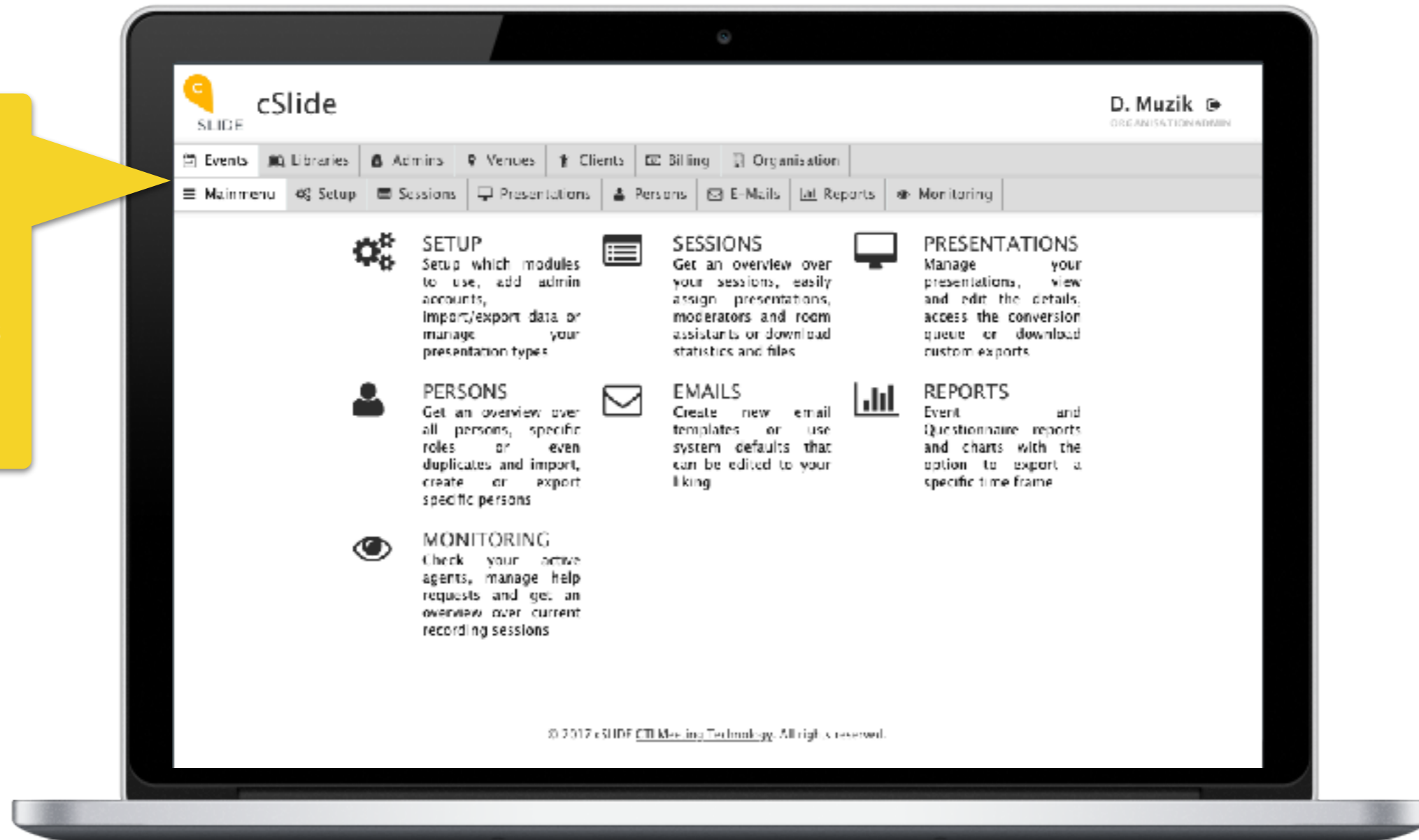
New administrative login offers maximum access from the get-go

- All users and administrators will now be automatically logged in at their highest level of permissions. Previous versions of cSLIDE required users to select from a radio button list of roles before proceeding through the system.
- Password control updates: passwords are no longer stored in clear text for administrators and can be recovered only by using the “password reset” function.
- It’s now possible to restrict individual administrative access to a range of IP addresses. This makes it easier to control and limit the access locations and timeframes of temporary staff and administrators (such as in an onsite environment).



Access all admin options from a single dashboard

No more back-clicking from menu to menu — all options are visible from all menus





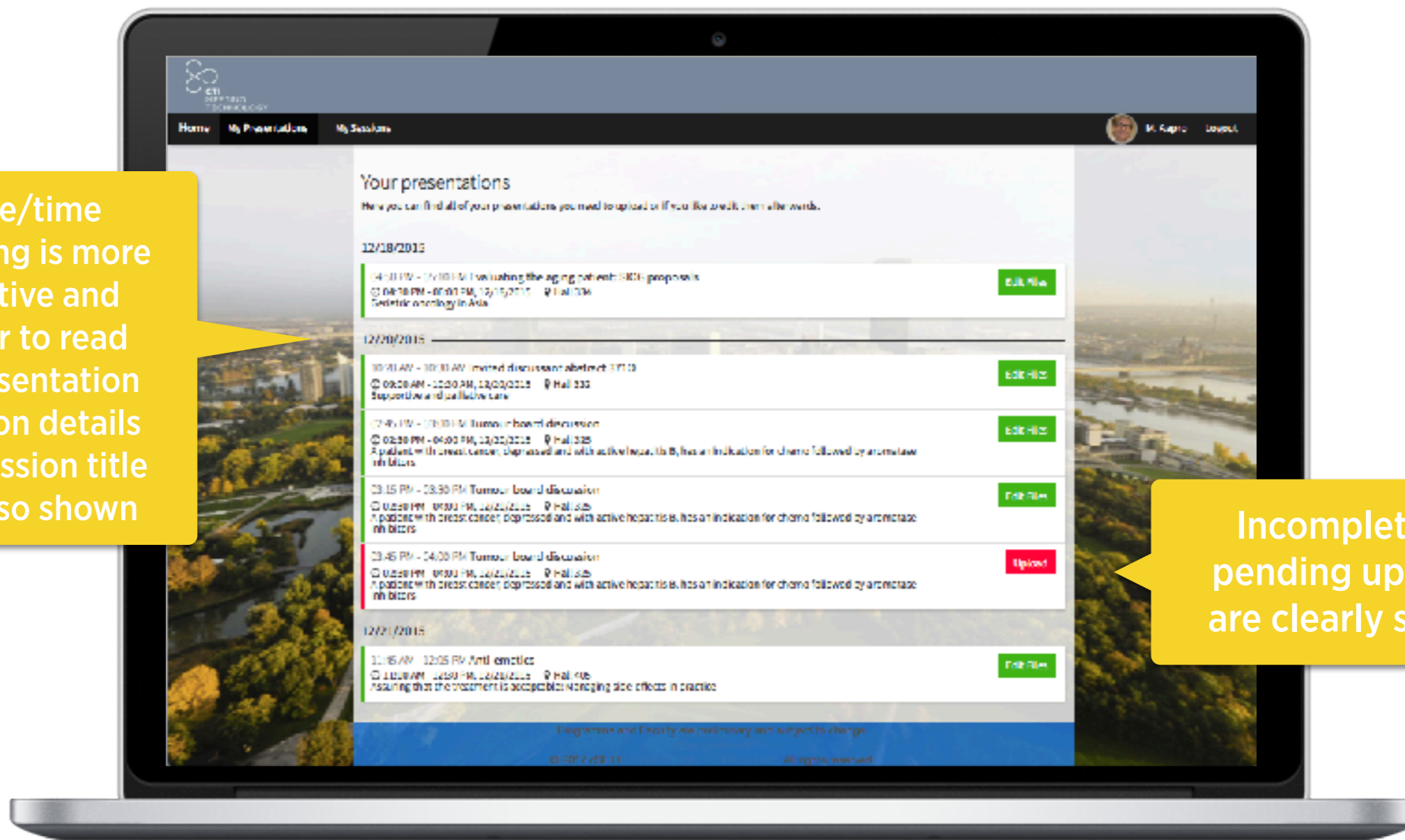
Access all admin options from a single dashboard

- An architecture shift has been deployed that improves administrative navigation between modules and functionalities. All available modules are now clickable from a layered menu bar that remains visible to the administrator in its entirety regardless of module used. Previous versions offered a tab-based interface requiring administrators to back out of a given module before selecting a new one.
- The system's backend change log has been improved to increase the speed of data sync between cSLIDE and third-party applications (i.e. digital signage and mobile apps). The system now allows third-parties to pull revised data incrementally (almost instantaneous sync) rather than having to fully re-sync the entire event database (sometimes overnight).
- A consolidated import/export tab now includes access to all modules with import/export functionality. Both Questionnaires and Questionnaire Report exports are now directly accessible under this tab.
- Configuration of the entire cSLIDE look and feel for an event now begins with the front-end and can be populated over all interface pages within the site. Add background graphics, banners, and more — and instantly apply all to every page. Note that individual modules can still be further customized, and will override the global application.



Users can easily review presentation status, edit existing uploads, and spot uploads still pending

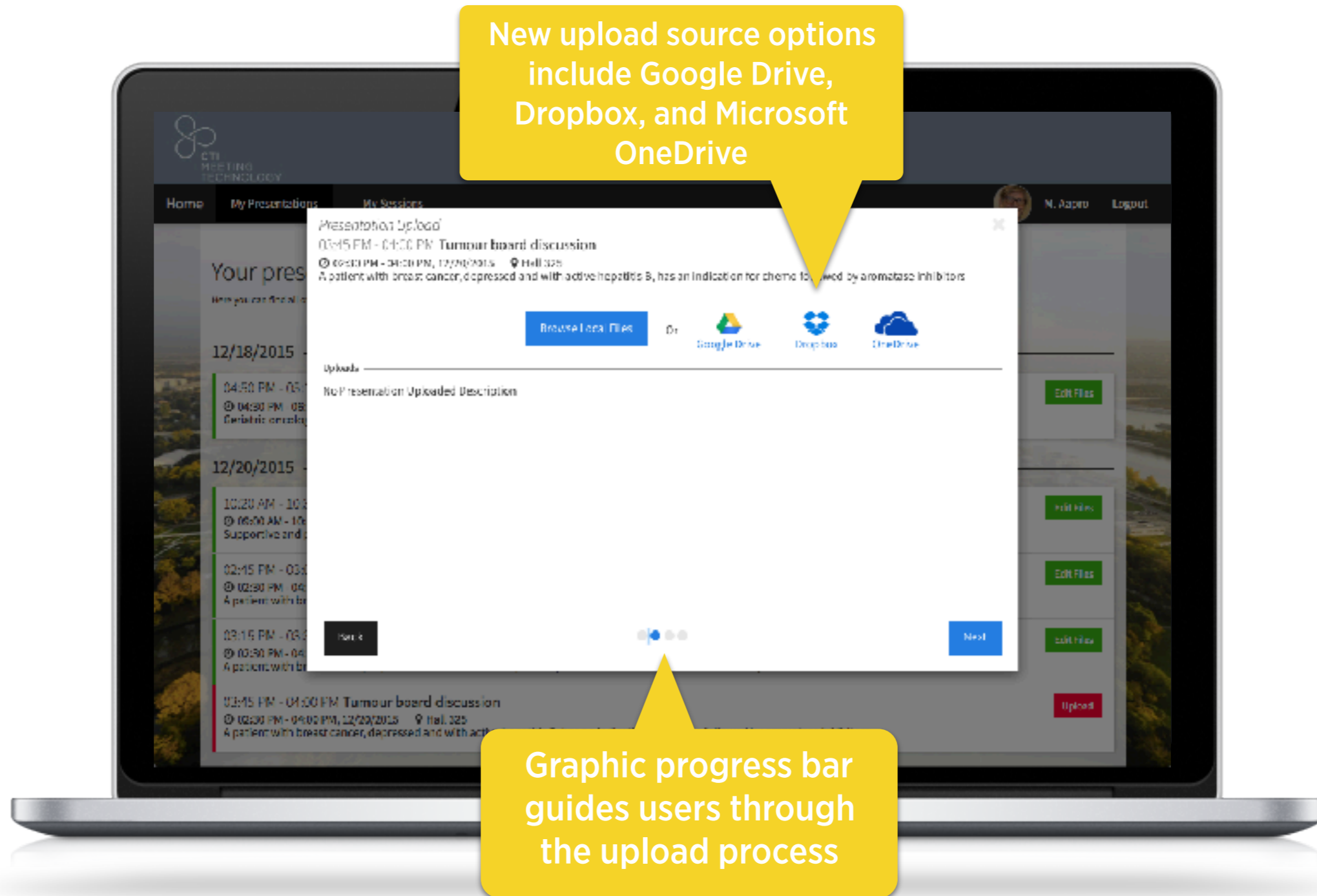
Date/time ordering is more intuitive and easier to read — presentation location details and session title are also shown



Incomplete or pending uploads are clearly shown



Upload interface includes new source options and user guidance





Users can easily review presentation status, edit existing uploads, and spot uploads still pending — and upload interface includes new source options and user guidance

- Moderators and facilitators can view, edit, and comment on uploaded presentations and materials within their assigned sessions.
- The initial user interface is simplified, offering step-by-step guidance for handout and presentation uploads.
- Once logged in, a user can view their presentations in scheduled date/time order and easily see which materials are pending upload (color-coded red) and which are uploaded and editable (color-coded green).
- Upload source options now include icon-based links to Dropbox, Google Drive, and Microsoft OneDrive.