

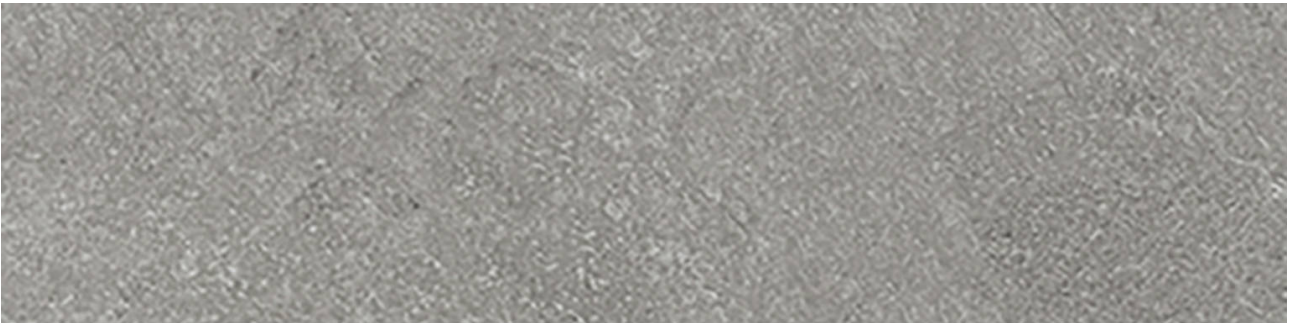
GRAMERCY

KITCHEN AND BATH

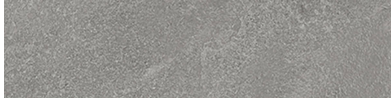
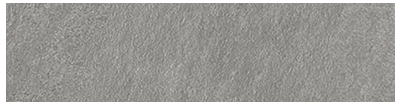
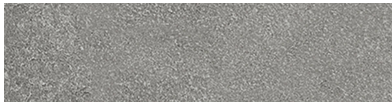
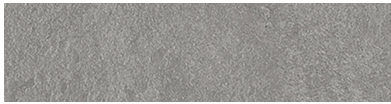
PRODUCT

LINCOLN LIGHT GREY 3X12 BULLNOSE

Tile | 3"x12" | Porcelain



GRAPHIC VARIETY



TECHNICAL DATA

CODE: QUME-LI-SB
NAME: Lincoln Light Grey 3x12 Bullnose
SERIES: Metro
SIZE: 3"x12"
FINISH: Matt
LOOK: Stone Look
EDGE: Rectified
FAMILY: Tile
FROST RESISTANCE: Yes
STYLE: Contemporary
SUITABLE FOR: Indoor
TYPOLOGY: Porcelain
TYPE OF PIECE: Bullnose
USE: Floor and Wall

PACKING

Size	Product type	BOX			PALLET		
		pcs	sqft	lb	boxes	sqft	lb
3"x12"							

WARNING The information contained in this packing list is for guidance only, the contents of the packing may vary. Please consult our sales representatives for an exact list.