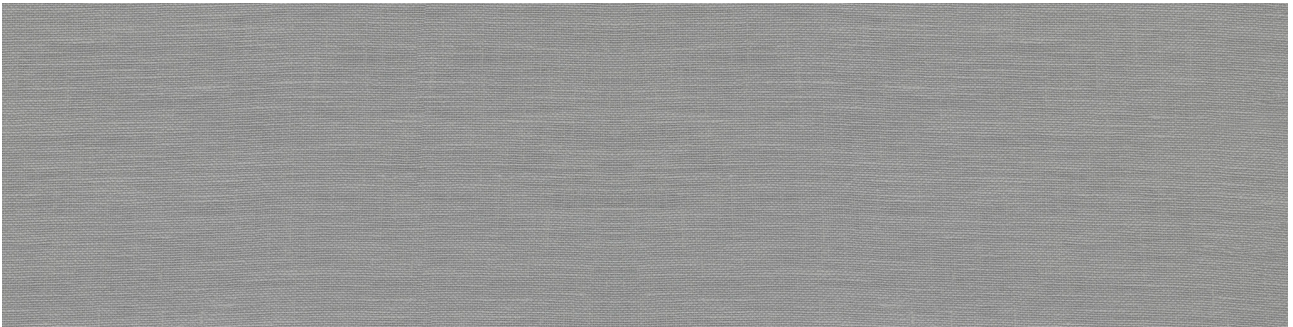




PRODUCT

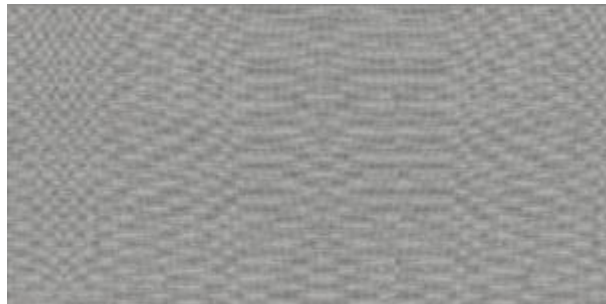
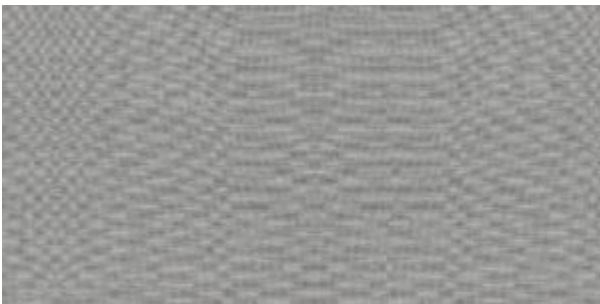
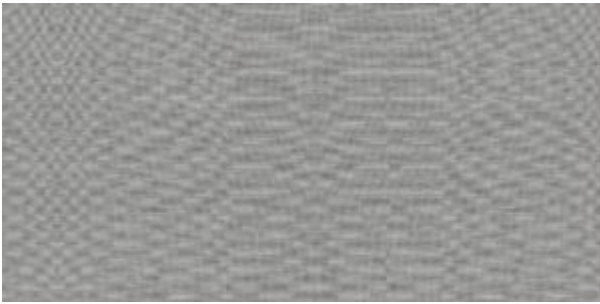
FABRIKA 6X24 RECTIFIED CHILEAN VICUNA MATTE

Tile | 6"x24" | Porcelain





DETAILS





TECHNICAL DATA

CODE: QUFA-CH-F2N
NAME: Fabrika 6X24 Rectified Chilean Vicuna Matte
SERIES: Fabrika
SIZE: 6"x24"
FINISH: Matt
LOOK: Textured Look
FAMILY: Tile
TYPOLOGY: Porcelain
EDGE: Rectified
FROST RESISTANCE: Yes
SHADE VARIATION: V1
STYLE: Contemporary
SUITABLE FOR: Backsplash| Indoor | Shower
TYPE OF PIECE: Field Tile
USE: Floor and Wall



PACKING

Size	Product type	BOX			PALLET		
		pcs	sqft	lb	boxes	sqft	lb
6"x24"	Field Tile	12	11.64				

WARNING The information contained in this packing list is for guidance only, the contents of the packing may vary. Please consult our sales representatives for an exact list.