



ALITA TILE
NOBODY TREATS YA LIKE ALITA

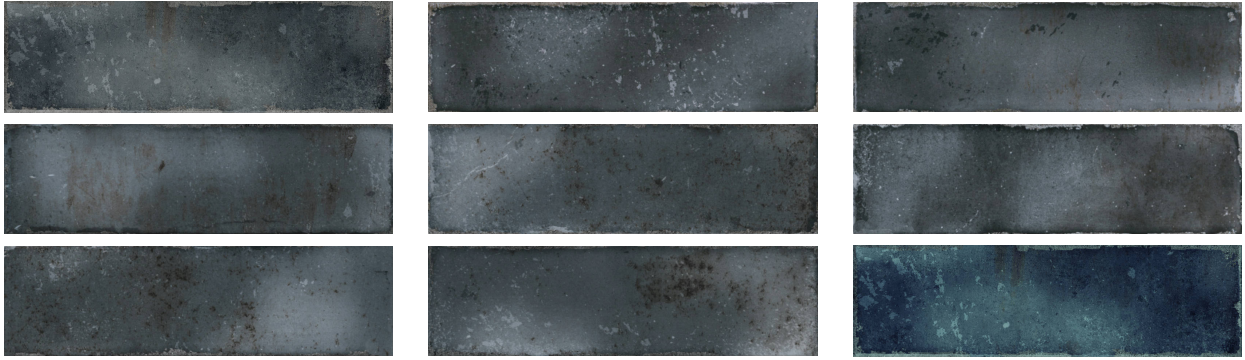
PRODUCT

KEY BISCAYNE ANTHRACITE 2.75X9.5

Tile | 2.75"x9.5" | Ceramic



GRAPHIC VARIETY



ROOM SCENES



TECHNICAL DATA

CODE: QUMH-KE-1
NAME: Key Biscayne Anthracite 2.75x9.5
SIZE: 2.75"x9.5"
SERIES: Miami
FINISH: Gloss
LOOK: Subway Tile
FAMILY: Tile
STYLE: Traditional
SUITABLE FOR: Backsplash, Indoor
TYPOLOGY: Ceramic
TYPE OF PIECE: Field Tile
USE: Wall only

PACKING

		BOX			PALLET		
Size	Product type	pcs	sqft	lb	boxes	sqft	lb
2.75"x9.5"	Field Tile	30	5.34		120	640.8	

WARNING The information contained in this packing list is for guidance only, the contents of the packing may vary. Please consult our sales representatives for an exact list.