



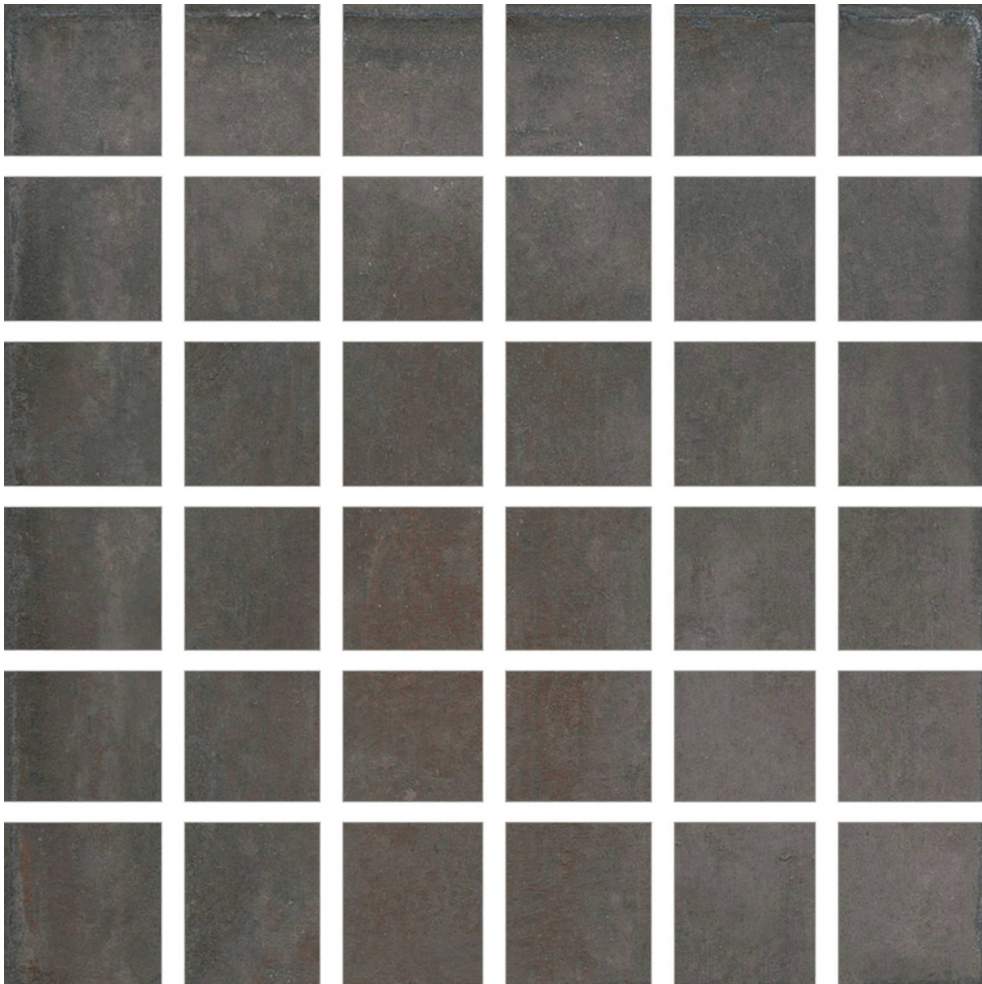
**ALITA TILE**  
NOBODY TREATS YA LIKE ALITA

---

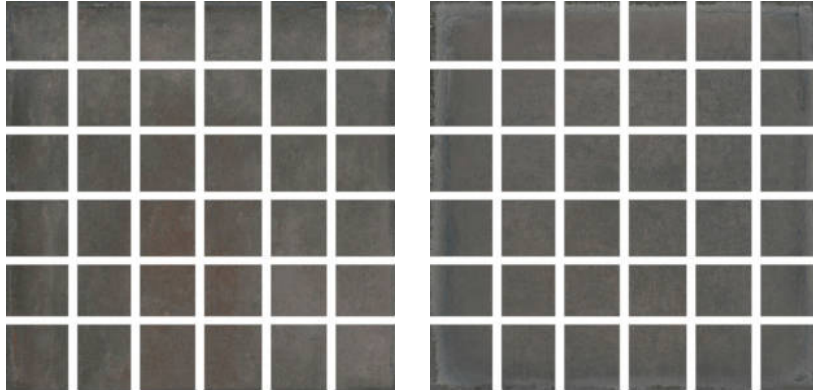
**PRODUCT**  
**PALMS STEEL 2X2 MOSAIC**

---

Tile | 12"x12" | Glazed Porcelain



## GRAPHIC VARIETY



**TECHNICAL DATA**

CODE: QUCR-PA-M  
NAME: Palms Steel 2x2 Mosaic  
SIZE: 12"x12"  
SERIES: Charleston  
FINISH: Matt  
LOOK: Terracotta  
BREAKING STRENGTH: SAFE 1300 N  
CHEMICAL RESISTANCE: Not Affected  
DCOF: >0.89  
FAMILY: Tile  
FROST RESISTANCE: Yes  
MOSAIC TYPE: 2"x2"  
PEI: 4  
SHADE VARIATION: V1  
STAIN RESISTANCE: Not Affected  
STYLE: Contemporary  
SUITABLE FOR: Backsplash|Indoor|Shower  
TYPOLOGY: Glazed Porcelain  
THICKNESS: 9.5  
TYPE OF PIECE: Mosaic  
USE: Floor and Wall  
WATER ABSORPTION: <=0.5%

**PACKING**

		BOX			PALLET		
Size	Product type	pcs	sqft	lb	boxes	sqft	lb
12"x12"	Mosaic	6					

**WARNING** The information contained in this packing list is for guidance only, the contents of the packing may vary. Please consult our sales representatives for an exact list.