

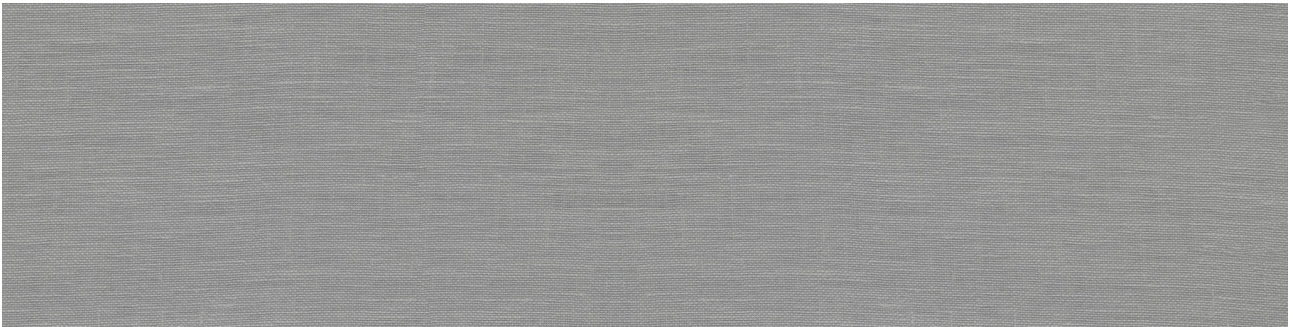


ALITA TILE
NOBODY TREATS YA LIKE ALITA

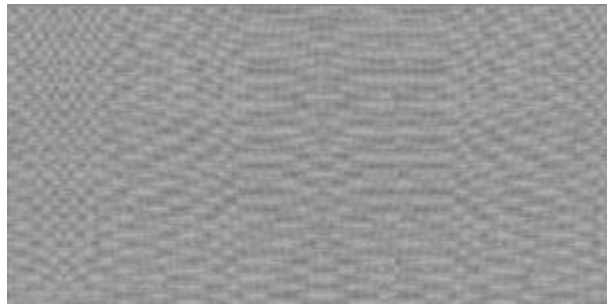
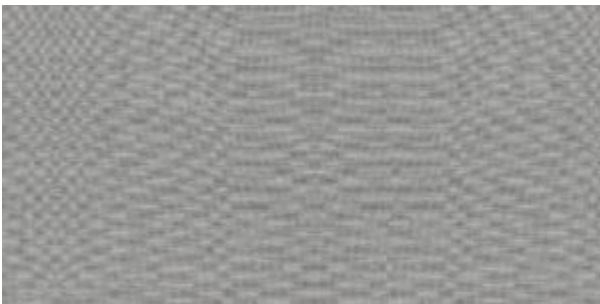
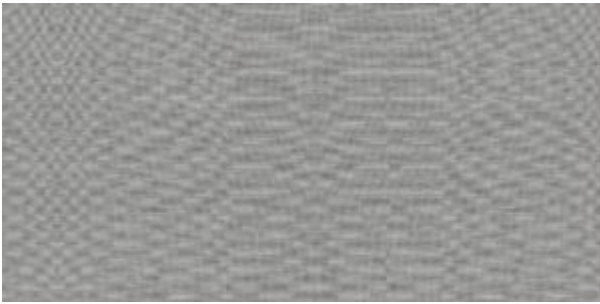
PRODUCT

FABRIKA 6X24 RECTIFIED CHILEAN VICUNA MATTE

Tile | 6"x24" | Porcelain



DETAILS



TECHNICAL DATA

CODE: QUFA-CH-F2N
NAME: Fabrika 6X24 Rectified Chilean Vicuna Matte
SIZE: 6"x24"
SERIES: Fabrika
FINISH: Matt
LOOK: Textured Look
EDGE: Rectified
FAMILY: Tile
FROST RESISTANCE: Yes
SHADE VARIATION: V1
SPECIAL ORDER: Special Order
STYLE: Contemporary
SUITABLE FOR: Backsplash| Indoor | Shower
TYPOLOGY: Porcelain
TYPE OF PIECE: Field Tile
USE: Floor and Wall

PACKING

Size	Product type	BOX			PALLET		
		pcs	sqft	lb	boxes	sqft	lb
6"x24"	Field Tile	12	11.64				

WARNING The information contained in this packing list is for guidance only, the contents of the packing may vary. Please consult our sales representatives for an exact list.