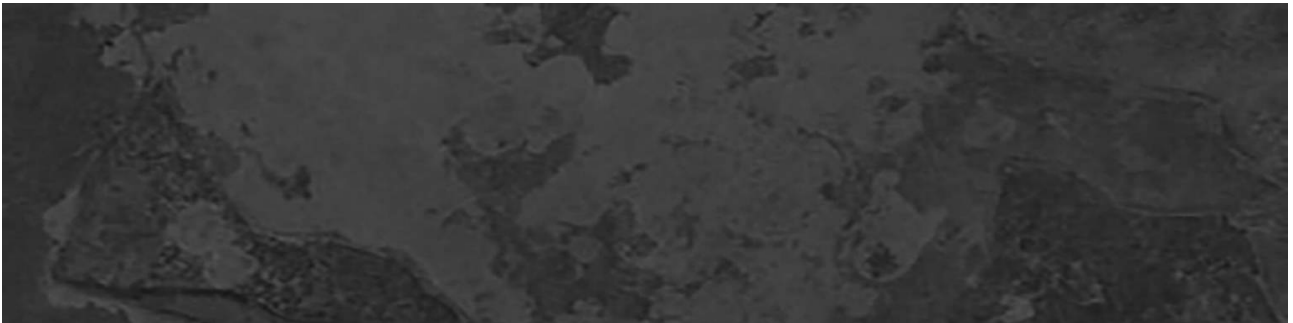




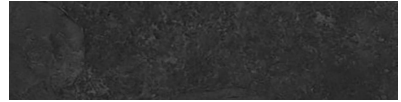
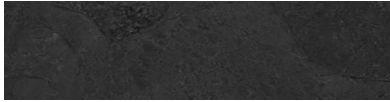
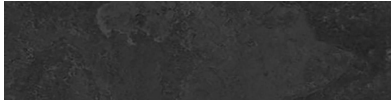
ALITA TILE
NOBODY TREATS YA LIKE ALITA

PRODUCT
KATHMANDU BLACK 3X12 BULLNOSE

Tile | 3"x12" | Porcelain



GRAPHIC VARIETY



TECHNICAL DATA

CODE: QUNS-KA-SB
NAME: Kathmandu Black 3X12 Bullnose
SIZE: 3"x12"
SERIES: Nepal Slate
FINISH: Matt
LOOK: Slate Stone Look
FAMILY: Tile
FROST RESISTANCE: Yes
STYLE: Contemporary
SUITABLE FOR: Indoor, Shower
TYPOLOGY: Porcelain
TYPE OF PIECE: Bullnose
USE: Floor and Wall

PACKING

		BOX			PALLET		
Size	Product type	pcs	sqft	lb	boxes	sqft	lb
3"x12"							

WARNING The information contained in this packing list is for guidance only, the contents of the packing may vary. Please consult our sales representatives for an exact list.