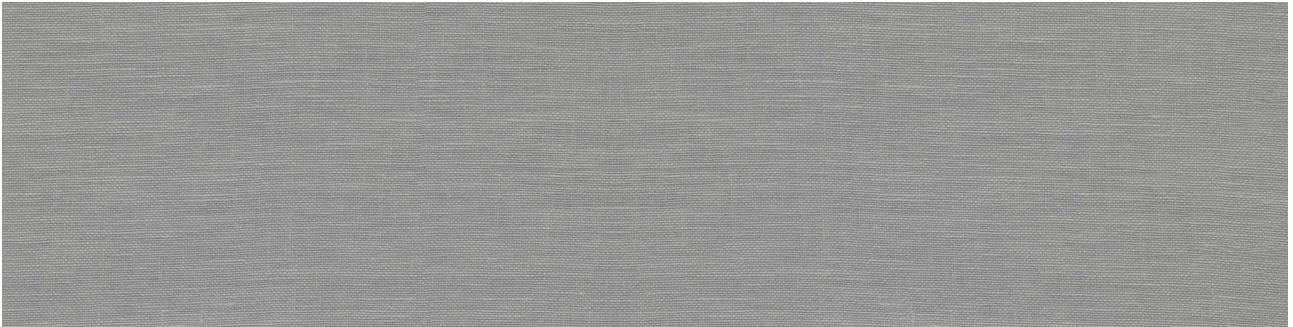




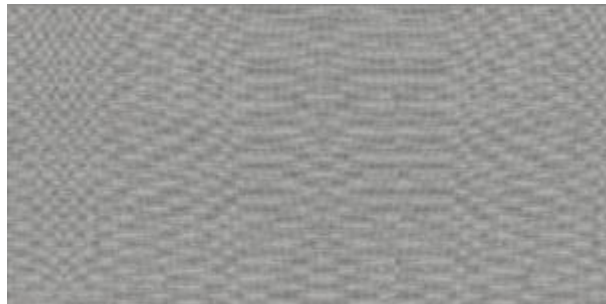
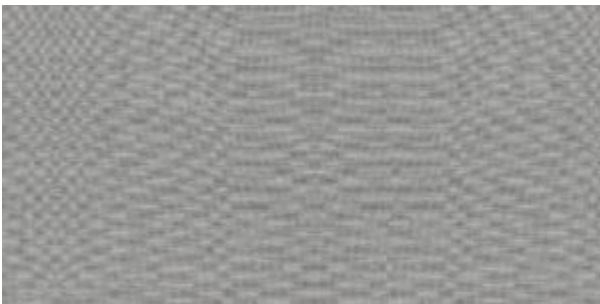
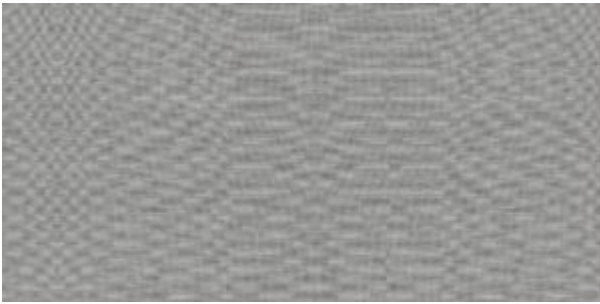
PRODUCT

FABRIKA 6X24 RECTIFIED CHILEAN VICUNA MATTE

Tile | 6"x24" | Porcelain



DETAILS



TECHNICAL DATA

CODE: QUFA-CH-F2N
SIZE: 6"x24"
NAME: Fabrika 6X24 Rectified Chilean Vicuna Matte
SERIES: Fabrika
FINISH: Matt
LOOK: Textured Look
EDGE: Rectified
FAMILY: Tile
FROST RESISTANCE: Yes
SHADE VARIATION: V1
STYLE: Contemporary
SUITABLE FOR: Backsplash| Indoor | Shower
TYPOLOGY: Porcelain
TYPE OF PIECE: Field Tile
USE: Floor and Wall

PACKING

| Size | Product type | BOX | | | PALLET | | |
|--------|--------------|-----|-------|----|--------|------|----|
| | | pcs | sqft | lb | boxes | sqft | lb |
| 6"x24" | Field Tile | 12 | 11.64 | | | | |

WARNING The information contained in this packing list is for guidance only, the contents of the packing may vary. Please consult our sales representatives for an exact list.