

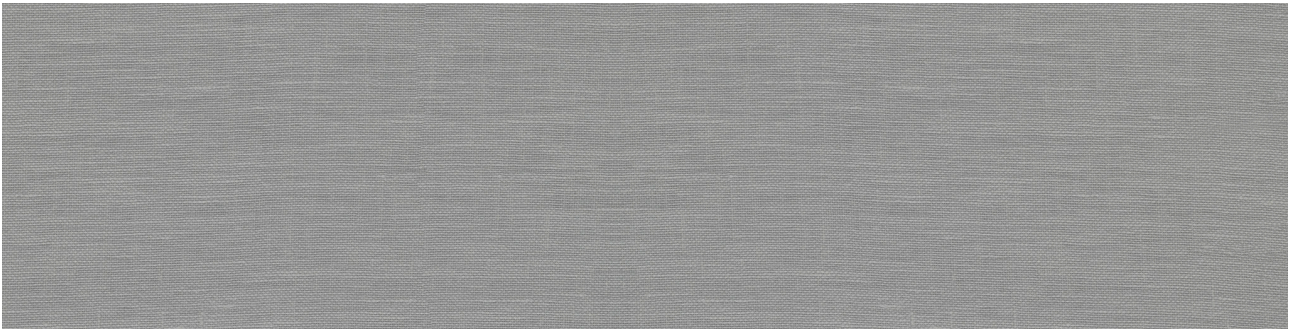


Ceramic Tile • Marble • Granite • Wood Floors

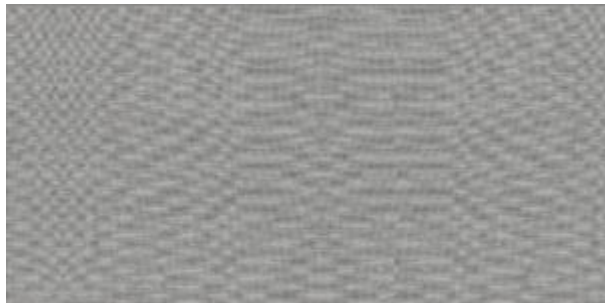
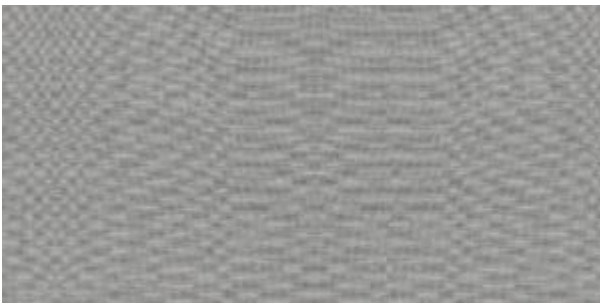
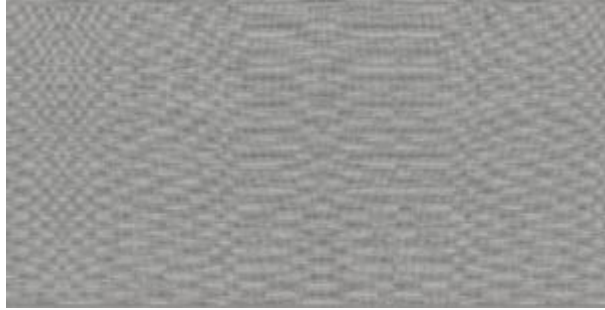
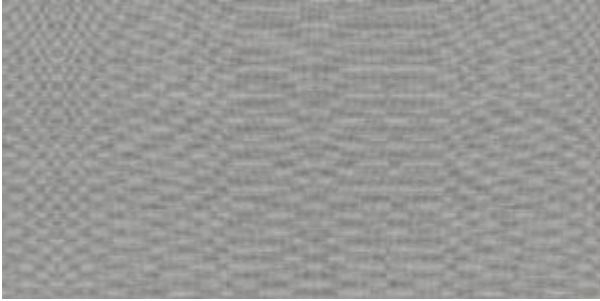
PRODUCT

**FABRIKA 6X24 RECTIFIED CHILEAN VICUNA
MATTE**

Tile | 6"x24" | Porcelain



DETAILS



TECHNICAL DATA

CODE: QUFA-CH-F2N
NAME: Fabrika 6X24 Rectified Chilean Vicuna Matte
SIZE: 6"x24"
SERIES: Fabrika
FINISH: Matt
LOOK: Textured Look
EDGE: Rectified
FAMILY: Tile
FROST RESISTANCE: Yes
SHADE VARIATION: V1
SUITABLE FOR: Backsplash | Indoor | Shower
TYPOLOGY: Porcelain
TYPE OF PIECE: Field Tile
USE: Floor and Wall

PACKING

Size	Product type	BOX			PALLET		
		pcs	sqft	lb	boxes	sqft	lb
6"x24"	Field Tile	12	11.64				

WARNING The information contained in this packing list is for guidance only, the contents of the packing may vary. Please consult our sales representatives for an exact list.