

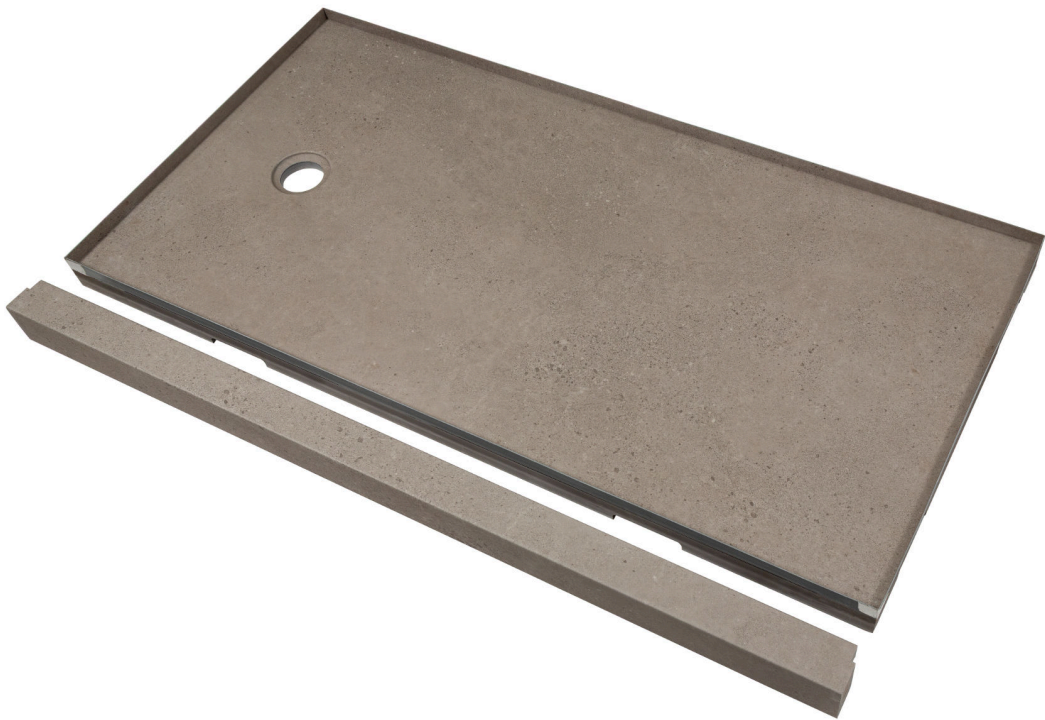


Ceramic Tile • Marble • Granite • Wood Floors

PRODUCT

SHOWER PAN 30X60 CONCRETE SAND

Waterproof Walls | 30"x60"x3.5" | High-density PVC core



GRAPHIC VARIETY



TECHNICAL DATA

CODE: LCSP306073

NAME: Shower Pan 30x60 Concrete Sand

SIZE: 30"x60"x3.5"

SERIES: Concrete Sand

LOOK: Stone Look Shower Pan

CORE BOARD THICKNESS: 2"

FAMILY: Waterproof Walls

SUITABLE FOR: Shower

TPOLOGY: High-density PVC core

TYPE OF PIECE: Shower Pan Base

TPOLOGY: Shower Pan

TOTAL THICKNESS: 3.5"

USE: Floor only

NOTES: This product is special order and cannot be cancelled, returned, or refunded.

PACKING

Size	Product type	BOX			PALLET		
		pcs	sqft	lb	boxes	sqft	lb
30"x60"x3.5"							

WARNING The information contained in this packing list is for guidance only, the contents of the packing may vary. Please consult our sales representatives for an exact list.