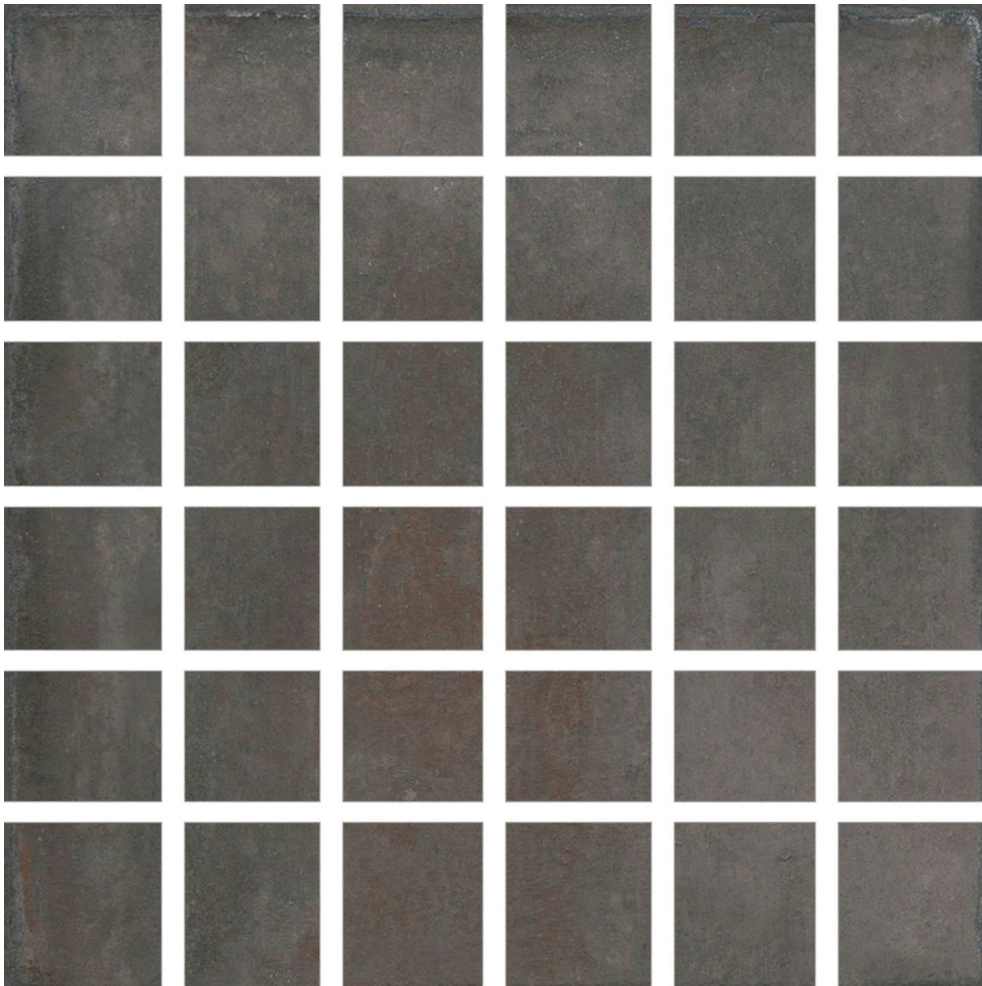




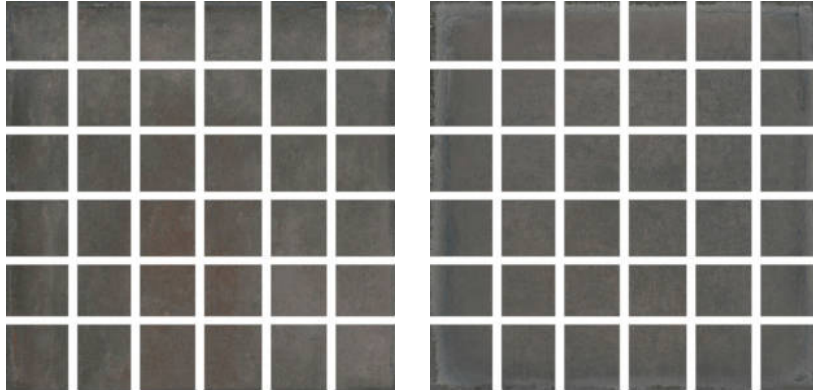
PRODUCT

PALMS STEEL 2X2 MOSAIC

12"x12" | Glazed Porcelain | Tile



GRAPHIC VARIETY



TECHNICAL DATA

CODE: QUCR-PA-M
NAME: Palms Steel 2x2 Mosaic
SERIES: Charleston
SIZE: 12"x12"
FINISH: Matt
LOOK: Terracotta
BREAKING STRENGTH: SAFE 1300 N
CHEMICAL RESISTANCE: Not Affected
DCOF: >0.89
FAMILY: Tile
FROST RESISTANCE: Yes
MOSAIC TYPE: 2"x2"
PEI: 4
SHADE VARIATION: V1
STAIN RESISTANCE: Not Affected
STYLE: Contemporary
SUITABLE FOR: Backsplash|Indoor|Shower
TYPOLOGY: Glazed Porcelain
THICKNESS: 9.5
TYPE OF PIECE: Mosaic
USE: Floor and Wall



PACKING

| | | BOX | | | PALLET | | |
|---------|--------------|-----|------|----|--------|------|----|
| Size | Product type | pcs | sqft | lb | boxes | sqft | lb |
| 12"x12" | | | | | | | |

WARNING The information contained in this packing list is for guidance only, the contents of the packing may vary. Please consult our sales representatives for an exact list.