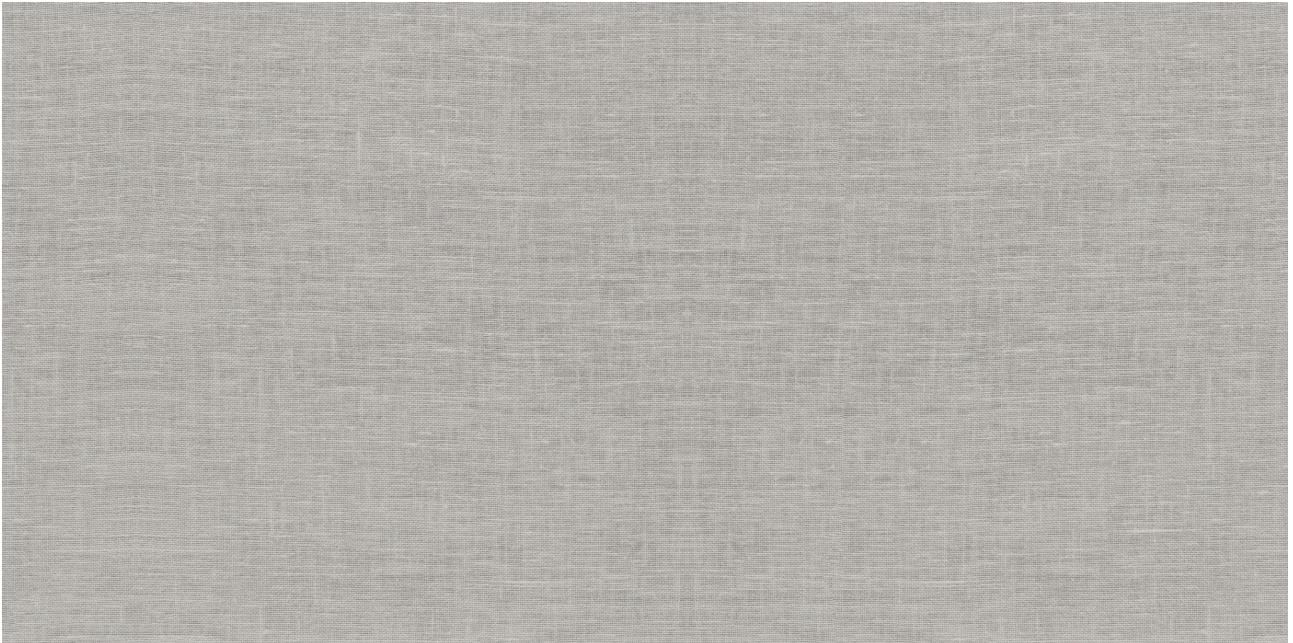




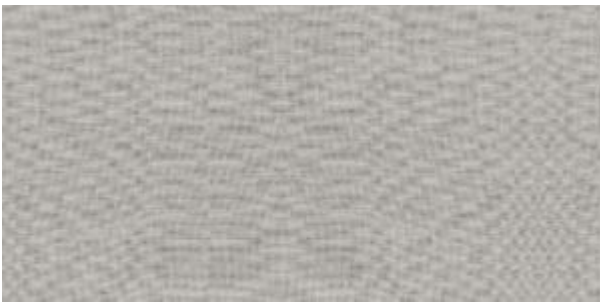
PRODUCT

FABRIKA 12X24 RECTIFIED CYPRUS SATIN MATTE

12"x24" | Porcelain | Tile



DETAILS



ROOM SCENES





TECHNICAL DATA

CODE: QUFA-CY-F1N
NAME: Fabrika 12X24 Rectified Cyprus Satin Matte
SERIES: Fabrika
SIZE: 12"x24"
FINISH: Matt
LOOK: Textured Look
EDGE: Rectified
FAMILY: Tile
FROST RESISTANCE: Yes
SHADE VARIATION: V1
STYLE: Contemporary
SUITABLE FOR: Backsplash| Indoor | Shower
TYPOLOGY: Porcelain
TYPE OF PIECE: Field Tile
USE: Floor and Wall



PACKING

Size	Product type	BOX			PALLET		
		pcs	sqft	lb	boxes	sqft	lb
12"x24"	Field Tile	8	15.5				

WARNING The information contained in this packing list is for guidance only, the contents of the packing may vary. Please consult our sales representatives for an exact list.