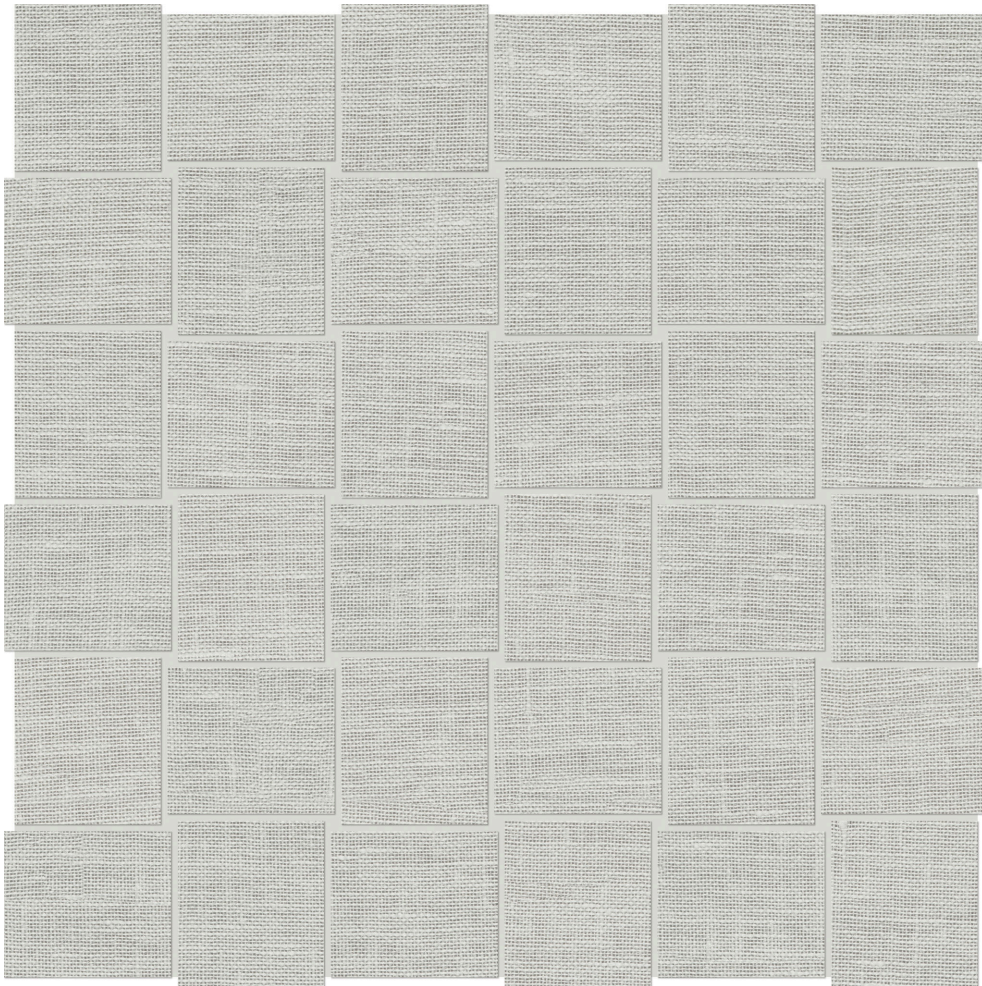


North Hills Flooring

PRODUCT

FABRIKA 2X2 BASKETWEAVE EGYPTIAN WEAVE MATTE

12"x12" | Porcelain | Tile



TECHNICAL DATA

CODE: QUFA-EG-2X2N
NAME: Fabrika 2X2 Basketweave Egyptian Weave Matte
SERIES: Fabrika
SIZE: 12"x12"
FINISH: Matt
LOOK: Textured Look
FAMILY: Tile
FROST RESISTANCE: Yes
MOSAIC TYPE: 2"x2"
SHADE VARIATION: V1
STYLE: Contemporary
SUITABLE FOR: Backsplash| Indoor | Shower
TYPOLOGY: Porcelain
TYPE OF PIECE: Mosaic
USE: Floor and Wall

PACKING

Size	Product type	BOX			PALLET		
		pcs	sqft	lb	boxes	sqft	lb
12"x12"	Mosaic	10	9.58		45		

WARNING The information contained in this packing list is for guidance only, the contents of the packing may vary. Please consult our sales representatives for an exact list.