

# *North Hills Flooring*

---

## **SERIES GLASS STONE**

---

| Mixed Materials | Multi-Look Mosaics



PRODUCTS



**Linear Bamboo Mosaic**  
12"x14" | Mixed Materials



**Linear Cabernet Mosaic**  
12"x14" | Mixed Materials



**Linear Cappuccino Mosaic**  
12"x14" | Mixed Materials



**Linear Creme Brulee Mosaic**  
12"x14" | Mixed Materials



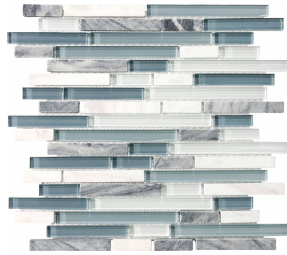
**Linear Iceland Mosaic**  
12"x14" | Mixed Materials



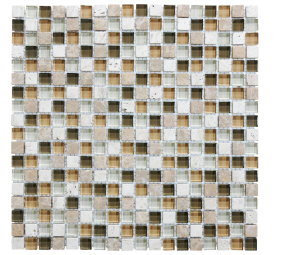
**Linear Midnight Mosaic**  
12"x14" | Mixed Materials



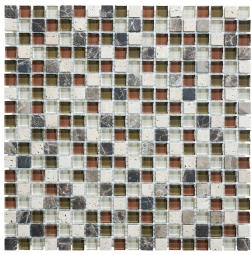
**Linear Spa Mosaic**  
12"x14" | Mixed Materials



**Linear Waterfall Mosaic**  
12"x14" | Mixed Materials



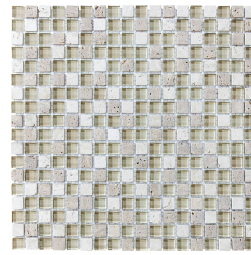
**5/8X5/8 Bamboo Mosaic**  
12"x12" | Mixed Materials



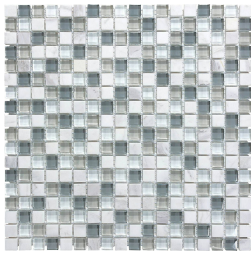
**5/8X5/8 Cabernet Mosaic**  
12"x12" | Mixed Materials



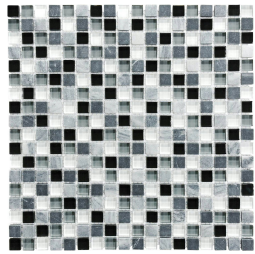
**5/8X5/8 Cappuccino Mosaic**  
12"x12" | Mixed Materials



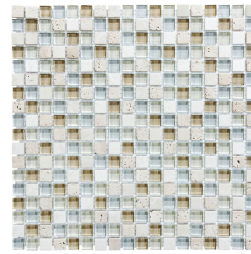
**5/8X5/8 Creme Brulee Mosaic**  
12"x12" | Mixed Materials



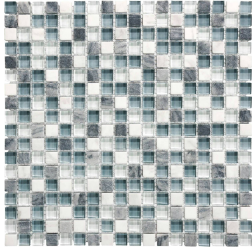
**5/8X5/8 Iceland Mosaic**  
12"x12" | Mixed Materials



**5/8X5/8 Midnight Mosaic**  
12"x12" | Mixed Materials



**5/8X5/8 Spa Mosaic**  
12"x12" | Mixed Materials



**5/8X5/8 Waterfall Mosaic**  
12"x12" | Mixed Materials

**ROOM SCENES**





---

Size	Product type	BOX			PALLET		
		pcs	sqft	lb	boxes	sqft	lb
12"x14"	Mosaic	10	10		36		
12"x12"	Mosaic	10	10		36		

**WARNING** The information contained in this packing list is for guidance only, the contents of the packing may vary. Please consult our sales representatives for an exact list.