

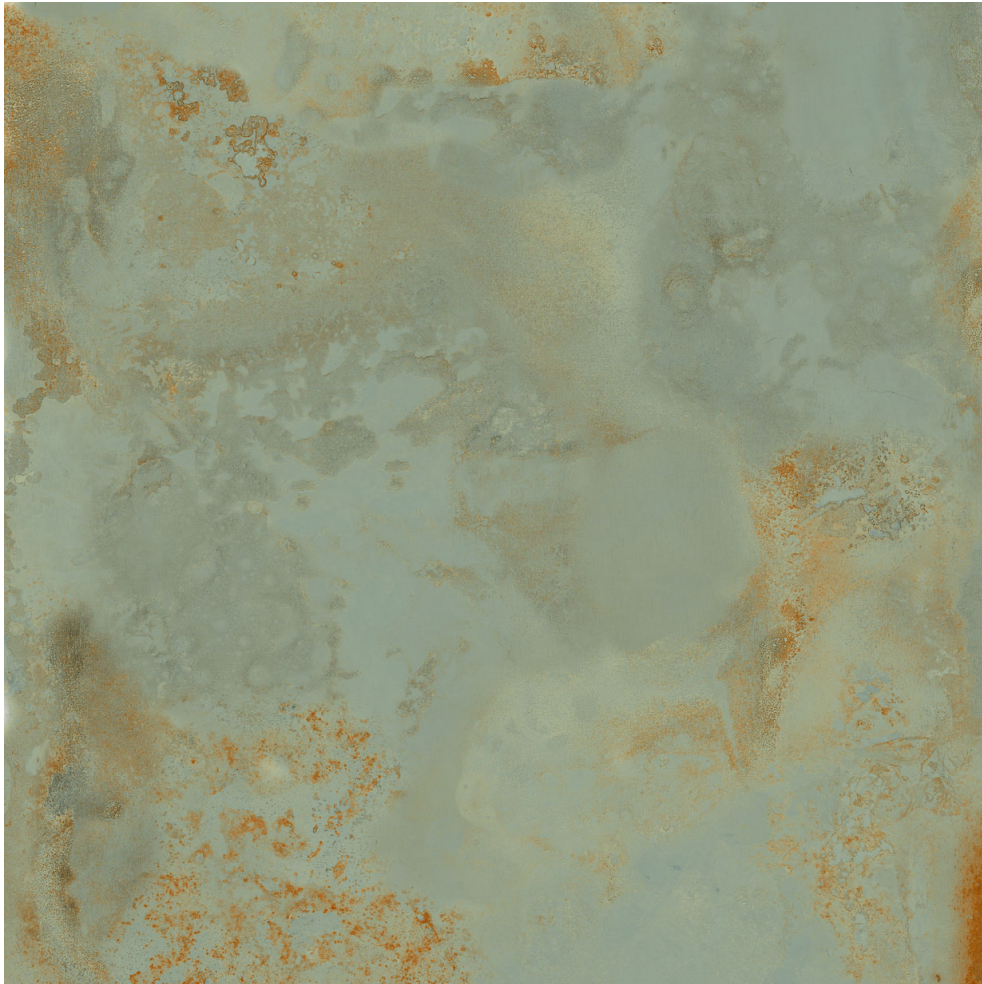


---

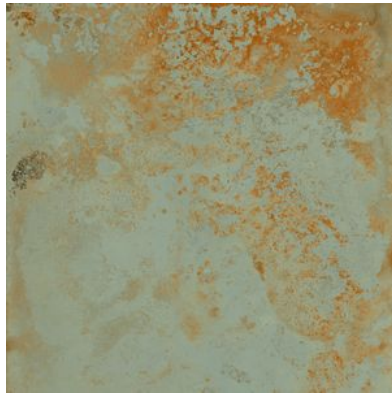
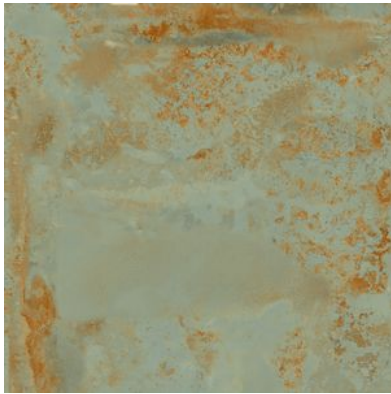
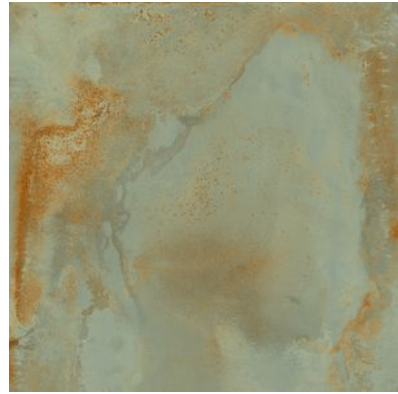
**PRODUCT**  
**TITAN VERDE**

---

59.6x59.6 · Rectificado (23"x23") | Porcelain Tile



**GRAPHIC VARIETY**



## TECHNICAL DATA

NAME: TITAN VERDE

**NEW**

CODE: q28vDjhs

GROUPS: Actual, Innova

SERIES: TITAN

SIZE: 59.6x59.6 · Rectificado (23"x23")

THICKNESS: 10.2

CÓDIGO DE VENTA: A051

AVAILABILITY: Keros Bulgaria (Ruse)

TYPOLOGY: Porcelain Tile

FINISH: Matt

SHADE VARIATION: V2

LOOK: Metal/Oxide

USE: Floor Tile

RECTIFIED: YES

FREEZE RESISTANCE: YES

PEI: IV

MOHS: 6

JOINT: Minimum 3mm

RESISTENCIA A MANCHAS: 5

RESISTANCE TO CHEMICAL ATTACK: GA-GLA-GHA

**PACKING**

Size	Product type	BOX			PALLET			EUROPALLET		
		pcs	m <sup>2</sup>	kg	boxes	m <sup>2</sup>	kg	boxes	m <sup>2</sup>	kg
59.6x59.6 · Rectificado (23"x23")	Bases	4	1.42	30.2	32	45.44	980	24	34.08	750

**SALES UNIT** m2

**PALLET SIZE** 100x100

**EUROPALLET SIZE** 80x120

**WARNING** The information contained in this packing list is for guidance only, the contents of the packing may vary. Please consult our sales representatives for an exact list.