



---

## **PRODUCT**

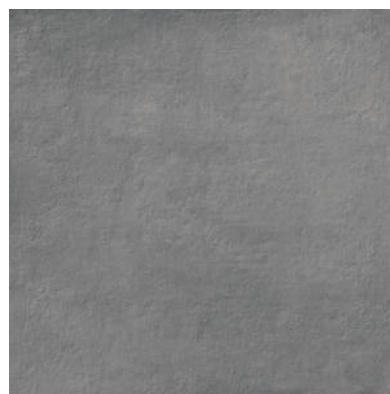
# **LONDON ANTRACITA**

---

80x80 (31"x31") | Porcelain Tile



## GRAPHIC VARIETY



## ROOM SCENES



**TECHNICAL DATA**

NAME: LONDON ANTRACITA  
CODE: BG000000043585  
GROUPS: Innova  
SERIES: LONDON  
SIZE: 80x80 (31"x31")  
THICKNESS: 10.2  
CÓDIGO DE VENTA: A091  
AVAILABILITY: Keros Bulgaria (Ruse)  
TYPOLOGY: Porcelain Tile  
FINISH: Matt  
SHADE VARIATION: V2  
LOOK: Cement  
USE: Floor & Wall  
RECTIFIED: YES

FREEZE RESISTANCE: YES  
PEI: III  
MOHS: 7  
RECOMMENDED JOINT: Minimum 3mm  
RELIEF: YES  
RESISTENCIA A MANCHAS: 5  
RESISTANCE TO CHEMICAL ATTACK: GA-GLA-GHA  
DISPLACEMENT RESISTANCE: R10

**PACKING**

		BOX			PALLET			EUROPALLET		
Size	Product type	pcs	m <sup>2</sup>	kg	boxes	m <sup>2</sup>	kg	boxes	m <sup>2</sup>	kg
80x80 (31"x31")	Bases	2	1.28	29.71	40	51.2	1203	35	44.8	1062

**SALES UNIT** m2

**PALLET SIZE** 93x113

**EUROPALLET SIZE** 80x120

**WARNING** The information contained in this packing list is for guidance only, the contents of the packing may vary. Please consult our sales representatives for an exact list.