

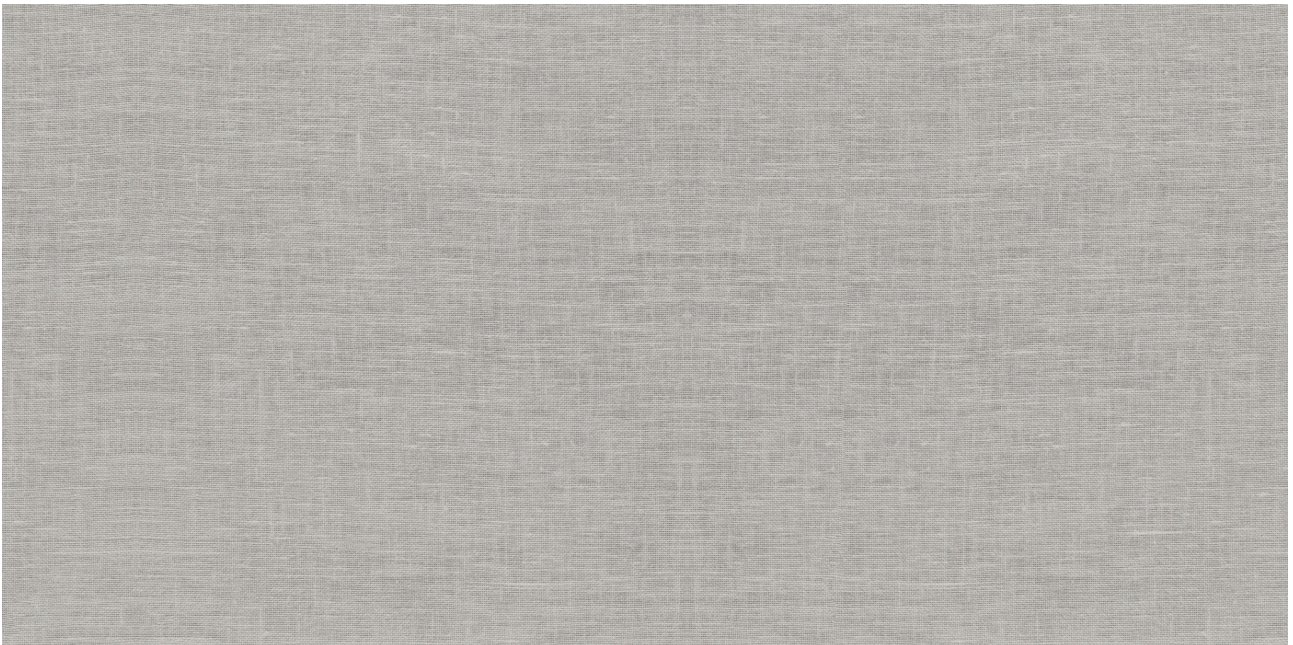


## PRODUCT

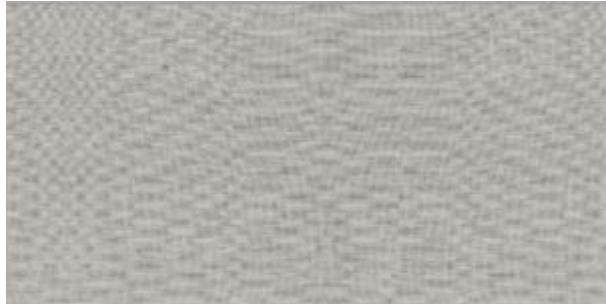
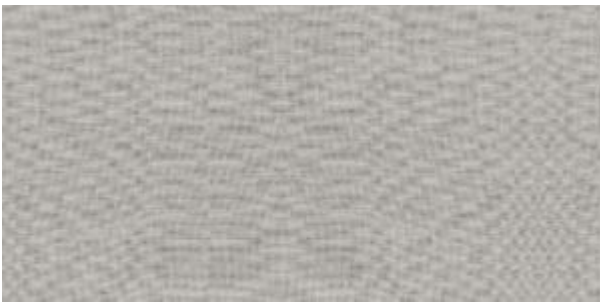
# FABRIKA 12X24 RECTIFIED CYPRUS SATIN MATTE

---

Tile | 12"x24" | Porcelain



**DETAILS**



**ROOM SCENES**



## **TECHNICAL DATA**

CODE: QUFA-CY-F1N  
NAME: Fabrika 12X24 Rectified Cyprus Satin Matte  
SERIES: Fabrika  
SIZE: 12"x24"  
FINISH: Matt  
LOOK: Textured Look  
FROST RESISTANCE: Yes  
SHADE VARIATION: V1  
EDGE: Rectified  
FAMILY: Tile  
STYLE: Contemporary  
SUITABLE FOR: Backsplash| Indoor | Shower  
TYPOLOGY: Porcelain  
TYPE OF PIECE: Field Tile  
USE: Floor and Wall

**PACKING**

Size	Product type	BOX			PALLET		
		pcs	sqft	lb	boxes	sqft	lb
12"x24"	Field Tile	8	15.5				

**WARNING** The information contained in this packing list is for guidance only, the contents of the packing may vary. Please consult our sales representatives for an exact list.