

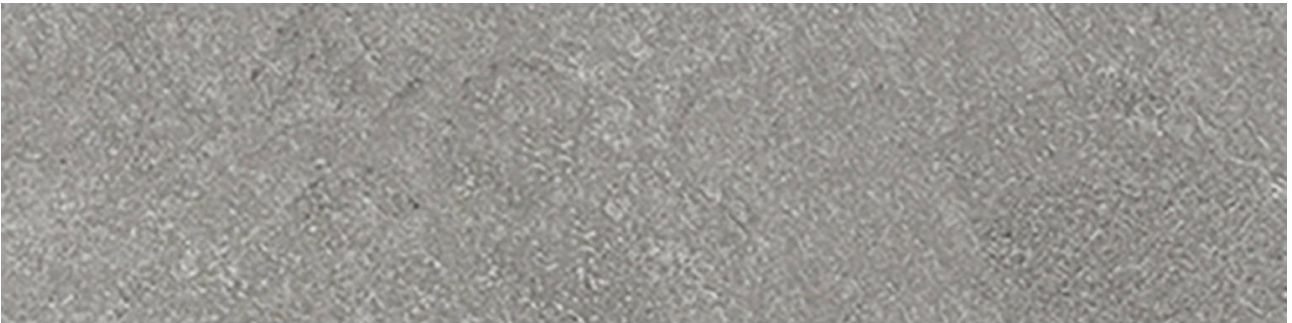
# Tiles by Kia

---

## PRODUCT LINCOLN LIGHT GREY 3X12 BULLNOSE

---

Tile | 3"x12" | Porcelain



## GRAPHIC VARIETY



## TECHNICAL DATA

CODE: QUME-LI-SB  
NAME: Lincoln Light Grey 3x12 Bullnose  
SIZE: 3"x12"  
SERIES: Metro  
FINISH: Matt  
LOOK: Stone Look  
BILLING UNIT: PC  
EDGE: Rectified  
FAMILY: Tile  
FROST RESISTANCE: Yes  
STYLE: Contemporary  
SUITABLE FOR: Indoor  
TYPOLOGY: Porcelain  
TYPE OF PIECE: Bullnose  
USE: Floor and Wall

## PACKING

| Size   | Product type | BOX |      |    | PALLET |      |    |
|--------|--------------|-----|------|----|--------|------|----|
|        |              | pcs | sqft | lb | boxes  | sqft | lb |
| 3"x12" |              |     |      |    |        |      |    |

**WARNING** The information contained in this packing list is for guidance only, the contents of the packing may vary. Please consult our sales representatives for an exact list.