

# Tiles by Kia

---

## PRODUCT

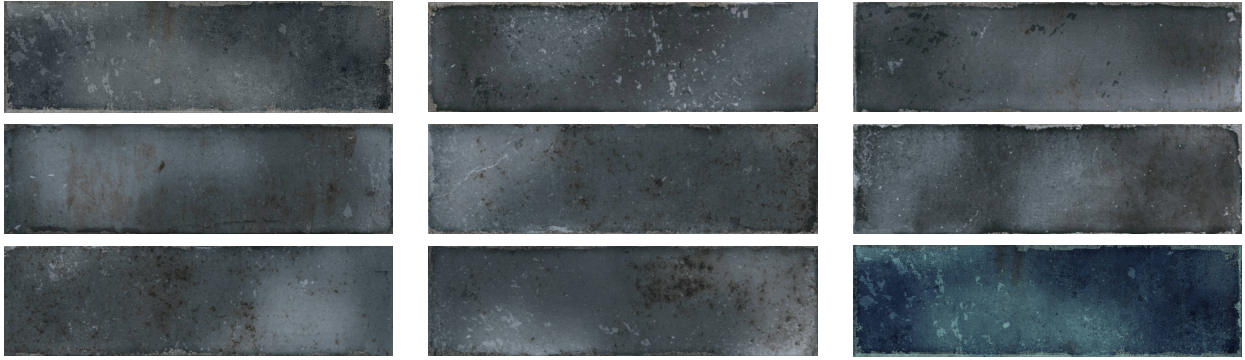
### KEY BISCAYNE ANTHRACITE 2.75X9.5

---

Tile | 2.75"x9.5" | Ceramic



## GRAPHIC VARIETY



## ROOM SCENES



## TECHNICAL DATA

CODE: QUMH-KE-1  
NAME: Key Biscayne Anthracite 2.75x9.5  
SIZE: 2.75"x9.5"  
SERIES: Miami  
FINISH: Gloss  
LOOK: Subway Tile  
BILLING UNIT: SF  
FAMILY: Tile  
STYLE: Traditional  
SUITABLE FOR: Backsplash,Indoor  
TYPOLOGY: Ceramic  
TYPE OF PIECE: Field Tile  
USE: Wall only

## PACKING

Size	Product type	BOX			PALLET		
		pcs	sqft	lb	boxes	sqft	lb
2.75"x9.5"	Field Tile	30	5.34		120		

**WARNING** The information contained in this packing list is for guidance only, the contents of the packing may vary. Please consult our sales representatives for an exact list.