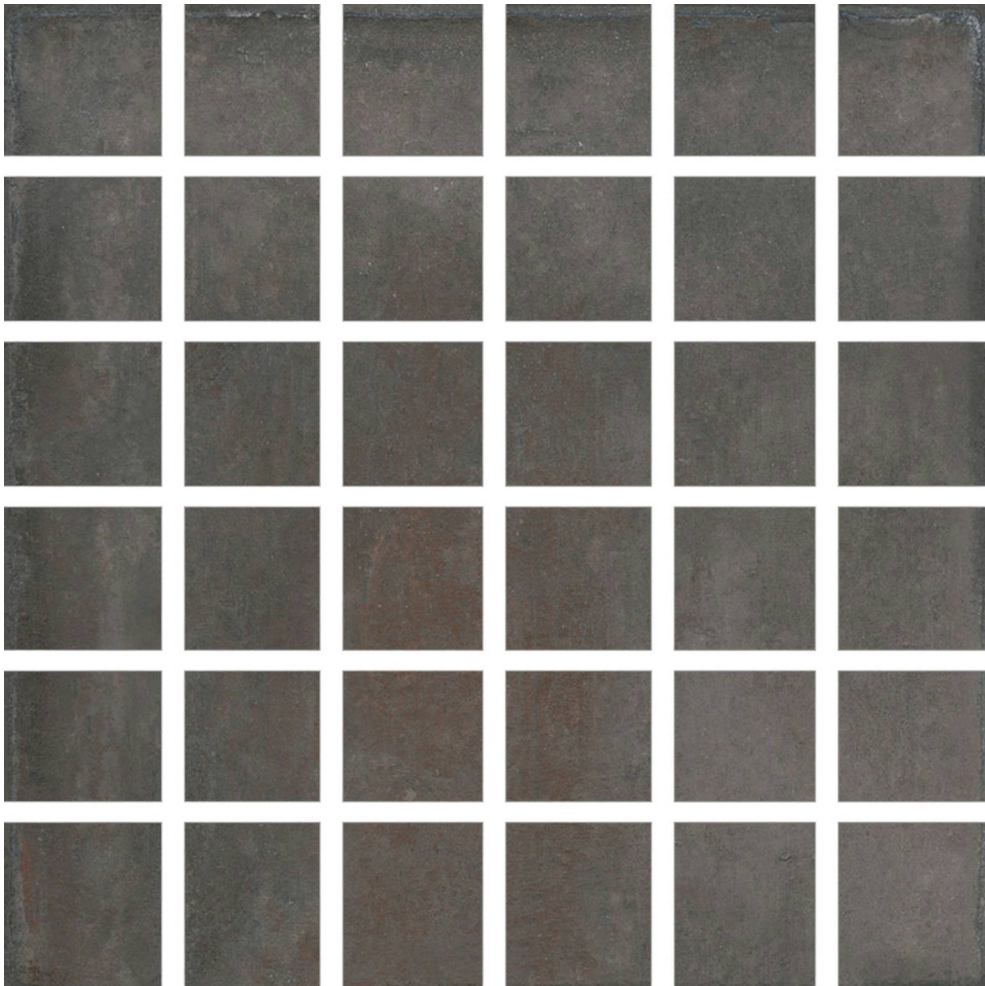


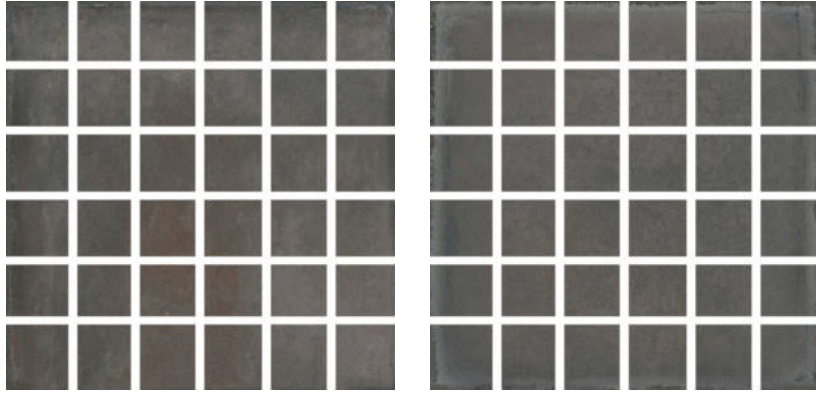
Tiles by Kia

PRODUCT PALMS STEEL 2X2 MOSAIC

Tile | 12"x12" | Glazed Porcelain



GRAPHIC VARIETY



TECHNICAL DATA

CODE: QU CR-PA-M
NAME: Palms Steel 2x2 Mosaic
SIZE: 12"x12"
SERIES: Charleston
FINISH: Matt
LOOK: Terracotta
BREAKING STRENGTH (APH): SAFE 1300 N
BILLING UNIT: SH
CHEMICAL RESISTANCE (APH): Not Affected
DCOF (APH): >0.89
FAMILY: Tile
FROST RESISTANCE: Yes
MOSAIC CHIP SIZE: 2"x2"
PEI: 4
SHADE VARIATION: V1
STAIN RESISTANCE (APH): Not Affected
STYLE: Contemporary
SUITABLE FOR: Backsplash|Indoor|Shower
TYPOLOGY: Glazed Porcelain
THICKNESS (APH): 9.5
TYPE OF PIECE: Mosaic
USE: Floor and Wall
WATER ABSORPTION (APH): <=0.5%

PACKING

Size	Product type	BOX			PALLET		
		pcs	sqft	lb	boxes	sqft	lb
12"x12"	Mosaic	6					

WARNING The information contained in this packing list is for guidance only, the contents of the packing may vary. Please consult our sales representatives for an exact list.