

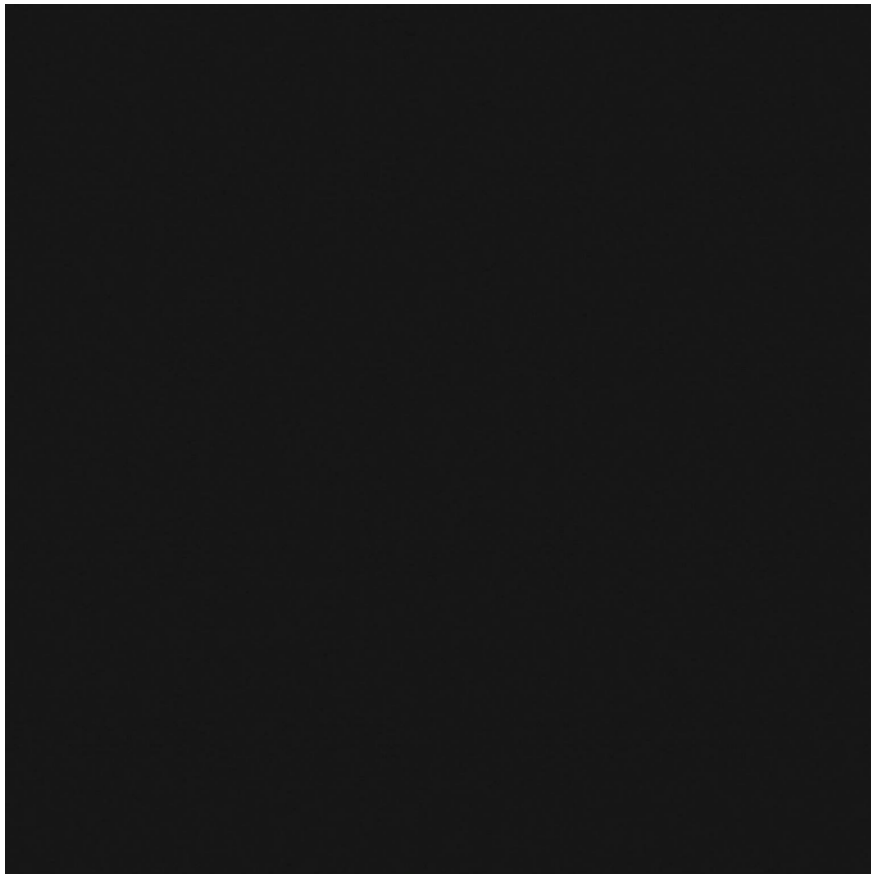
# Tiles by Kia

---

## PRODUCT MATTE NEW YORK 12X12

---

Tile | 12"x12" | Porcelain



## TECHNICAL DATA

CODE: QUHI-NY-1MN  
NAME: Matte New York 12X12  
SIZE: 12"x12"  
SERIES: High Rise  
FINISH: Matt  
LOOK: Mono-Color  
BILLING UNIT: SF  
EDGE: Rectified  
FAMILY: Tile  
FROST RESISTANCE: Yes  
PEI: 4  
SHADE VARIATION: V1  
STYLE: Contemporary  
SUITABLE FOR: Indoor  
TYPOLOGY: Porcelain  
TYPE OF PIECE: Field Tile  
USE: Floor and Wall

**PACKING**

Size	Product type	BOX			PALLET		
		pcs	sqft	lb	boxes	sqft	lb
12"x12"	Field Tile	11	10.55				

**WARNING** The information contained in this packing list is for guidance only, the contents of the packing may vary. Please consult our sales representatives for an exact list.