

# Tiles by Kia

---

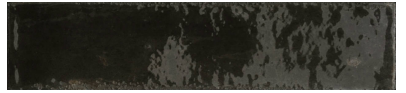
**PRODUCT**  
**DOWNTOWN NERO 2X9**

---

Tile | 2"x9" | Porcelain



## GRAPHIC VARIETY



## ROOM SCENES



## TECHNICAL DATA

CODE: QUMA-DO-1  
NAME: Downtown Nero 2x9  
SIZE: 2"x9"  
SERIES: Manhattan  
FINISH: Polished  
LOOK: Subway Tile  
BILLING UNIT: SF  
FAMILY: Tile  
FROST RESISTANCE: Yes  
PEI: 3  
STYLE: Traditional  
SUITABLE FOR: Backsplash,Indoor  
TYPOLOGY: Porcelain  
TYPE OF PIECE: Field Tile  
USE: Floor and Wall

### PACKING

Size	Product type	BOX			PALLET		
		pcs	sqft	lb	boxes	sqft	lb
2"x9"	Field Tile	36	5.58		95		

**WARNING** The information contained in this packing list is for guidance only, the contents of the packing may vary. Please consult our sales representatives for an exact list.