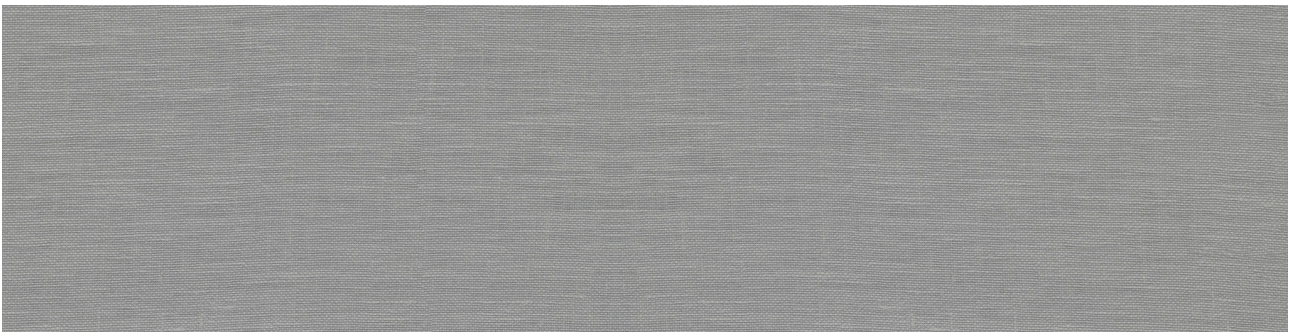




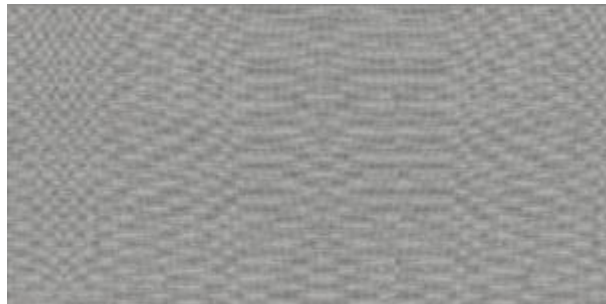
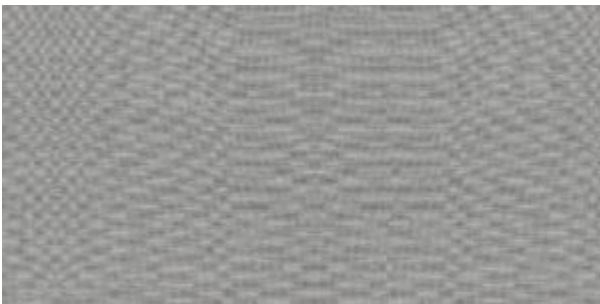
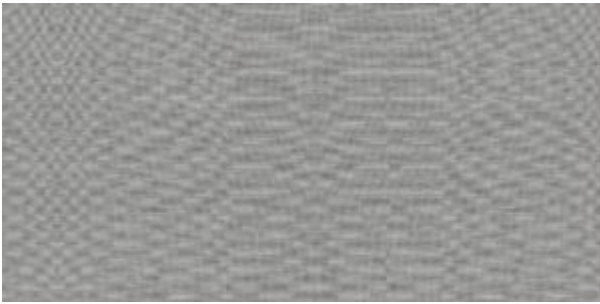
PRODUCT

FABRIKA 6X24 RECTIFIED CHILEAN VICUNA MATTE

Tile | 6"x24" | Porcelain



DETAILS



TECHNICAL DATA

CODE: QUFA-CH-F2N
NAME: Fabrika 6X24 Rectified Chilean Vicuna Matte
SIZE: 6"x24"
SERIES: Fabrika
FINISH: Matt
LOOK: Textured Look
EDGE: Rectified
FAMILY: Tile
FROST RESISTANCE: Yes
SHADE VARIATION: V1
STYLE: Contemporary
SUITABLE FOR: Backsplash| Indoor | Shower
TYPOLOGY: Porcelain
TYPE OF PIECE: Field Tile
USE: Floor and Wall

PACKING

Size	Product type	BOX			PALLET		
		pcs	sqft	lb	boxes	sqft	lb
6"x24"	Field Tile	12	11.64				