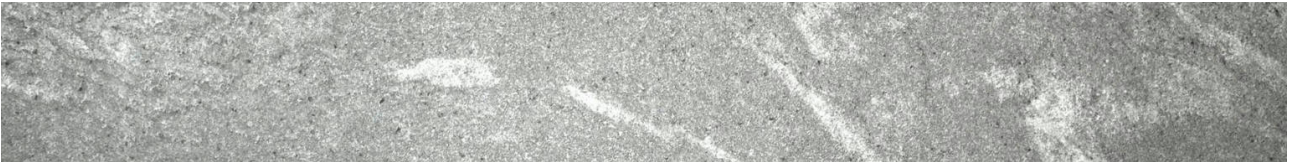


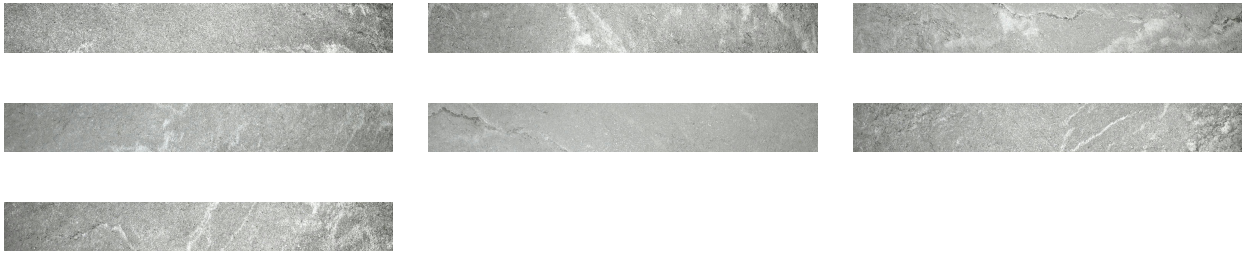


PRODUCT
3X24 CARBON BULLNOSE

Tile | 3"x24" | Porcelain



GRAPHIC VARIETY



TECHNICAL DATA

CODE: QUST-CA-SB
NAME: 3X24 Carbon Bullnose
SERIES: Structure
SIZE: 3"x24"
FINISH: Matt
LOOK: Marble Look
FAMILY: Tile
STYLE: Contemporary
SUITABLE FOR: Indoor
TYPOLOGY: Porcelain
TYPE OF PIECE: Bullnose
USE: Floor and Wall

PACKING

Size	Product type	BOX			PALLET		
		pcs	sqft	lb	boxes	sqft	lb
3"x24"	Bullnose	18	12.16		54	656.64	

WARNING The information contained in this packing list is for guidance only, the contents of the packing may vary. Please consult our sales representatives for an exact list.