



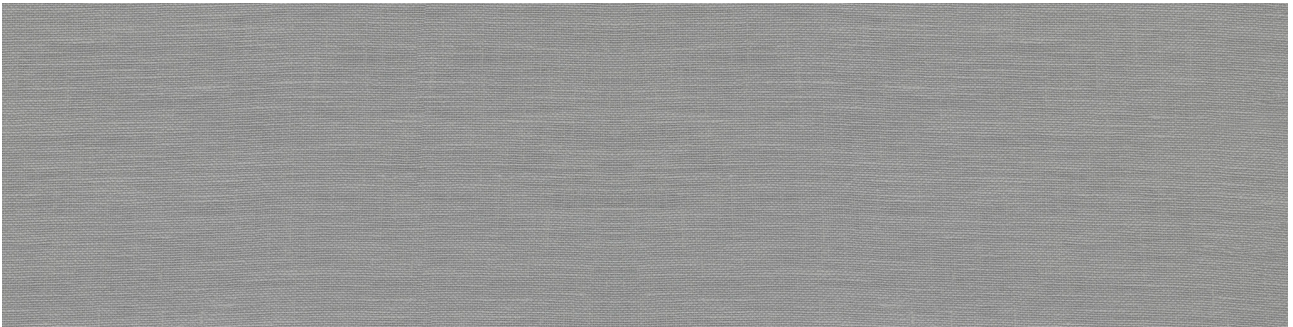
---

## PRODUCT

# FABRIKA 6X24 RECTIFIED CHILEAN VICUNA MATTE

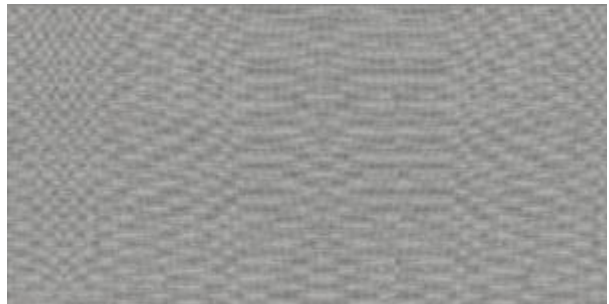
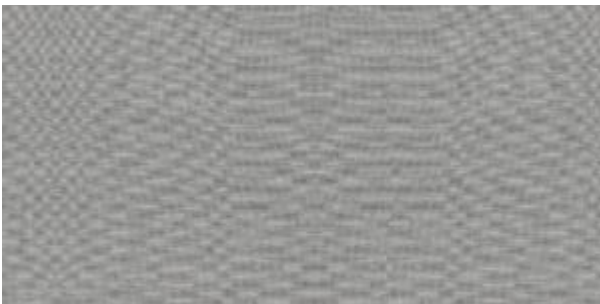
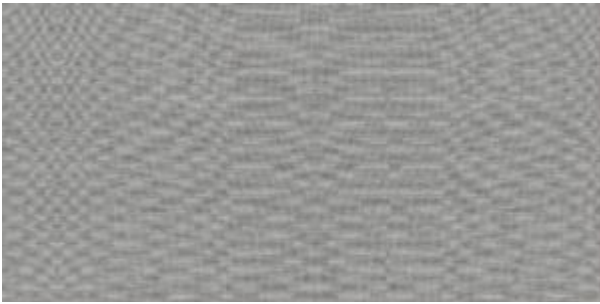
---

Tile | 6"x24" | Porcelain





**DETAILS**



## TECHNICAL DATA

CODE: QUFA-CH-F2N  
NAME: Fabrika 6X24 Rectified Chilean Vicuna Matte  
SERIES: Fabrika  
SIZE: 6"x24"  
FINISH: Matt  
LOOK: Textured Look  
FROST RESISTANCE: Yes  
SHADE VARIATION: V1  
STYLE: Contemporary  
SUITABLE FOR: Backsplash| Indoor | Shower  
TYPOLOGY: Porcelain  
TYPE OF PIECE: Field Tile  
USE: Floor and Wall  
EDGE: Rectified  
FAMILY: Tile

**PACKING**

Size	Product type	BOX			PALLET		
		pcs	sqft	lb	boxes	sqft	lb
6"x24"	Field Tile	12	11.64				

**WARNING** The information contained in this packing list is for guidance only, the contents of the packing may vary. Please consult our sales representatives for an exact list.