

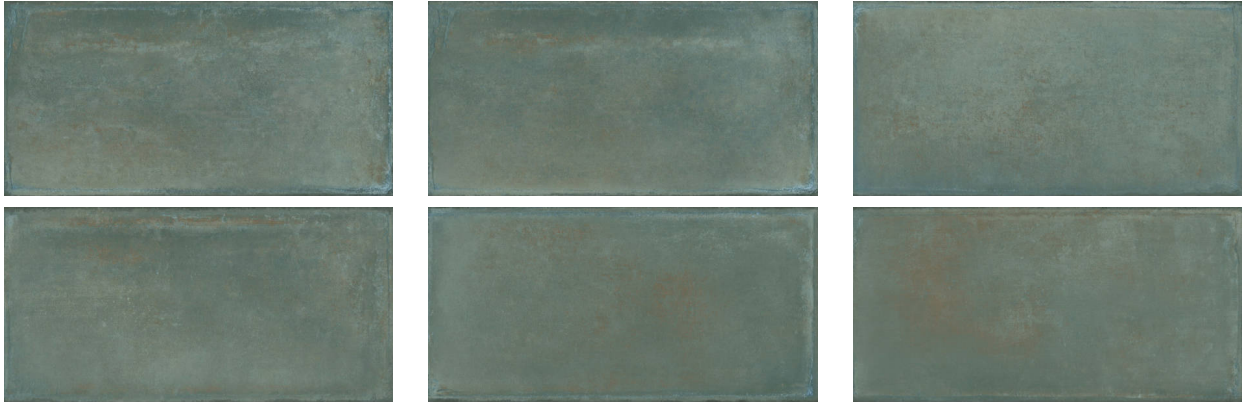
WORLD TILE

PRODUCT
KIAWAH GREEN 8X16F

Tile | 8"x16" | Glazed Porcelain



GRAPHIC VARIETY



ROOM SCENES



TECHNICAL DATA

CODE: QUCR-KI-2
NAME: Kiawah Green 8x16F
SIZE: 8"x16"
SERIES: Charleston
FINISH: Matt
LOOK: Terracotta
BREAKING STRENGTH (APH): SAFE 1300 N
CHEMICAL RESISTANCE (APH): Not Affected
DCOF (APH): >0.89
FAMILY: Tile
FROST RESISTANCE: Yes
PEI: 4
BILLING UNIT: SF
SHADE VARIATION: V1
STAIN RESISTANCE (APH): Not Affected
STYLE: Contemporary
SUITABLE FOR: Backsplash|Indoor|Shower
TYPOLOGY: Glazed Porcelain
THICKNESS (APH): 9.5
TYPE OF PIECE: Field Tile
USE: Floor and Wall
WATER ABSORPTION (APH): <=0.5%

PACKING

Size	Product type	BOX			PALLET		
		pcs	sqft	lb	boxes	sqft	lb
8"x16"	Field Tile	13	11.2		45		

WARNING The information contained in this packing list is for guidance only, the contents of the packing may vary. Please consult our sales representatives for an exact list.